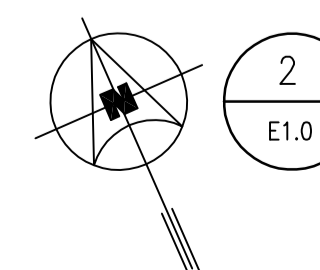
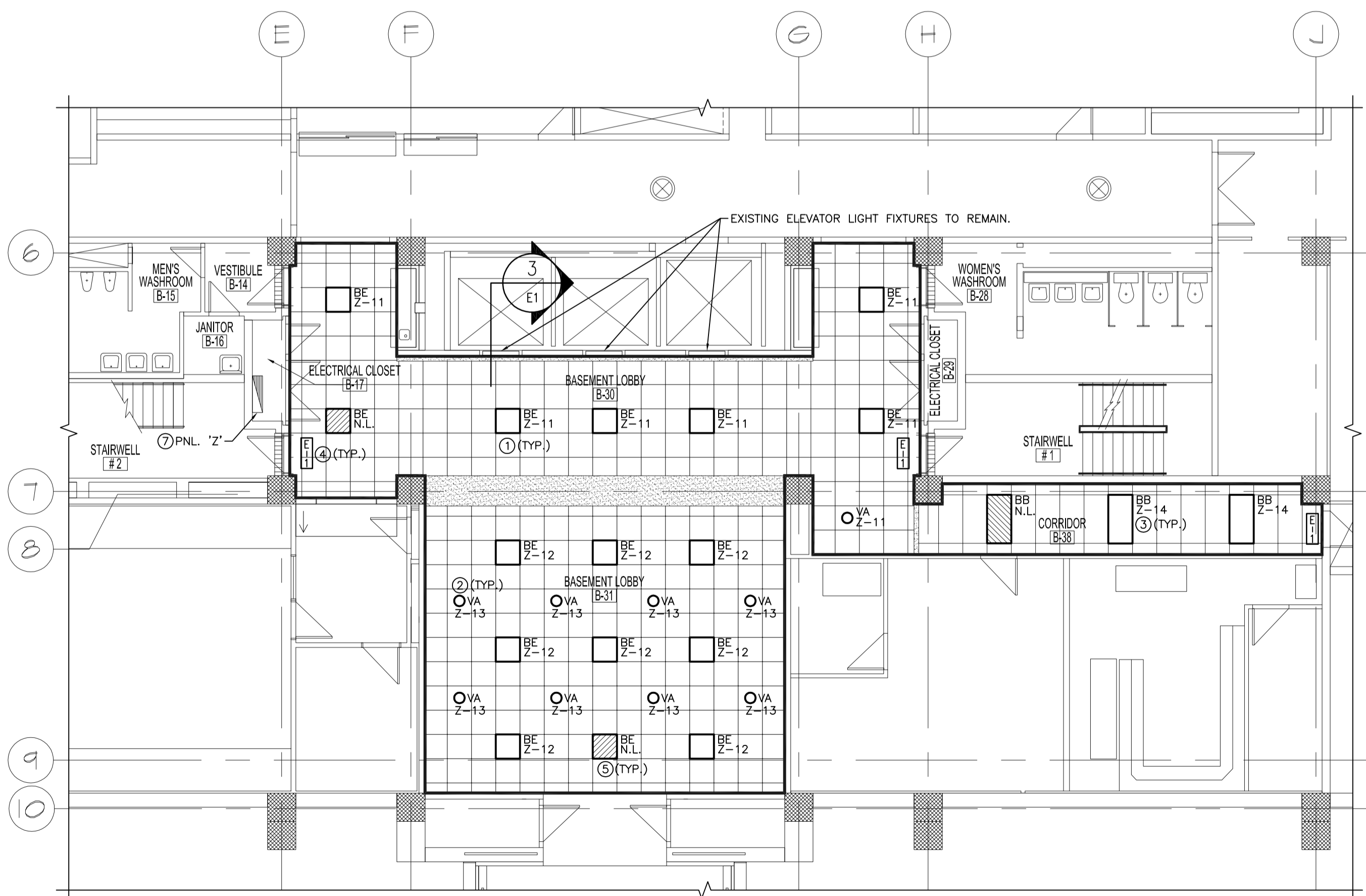
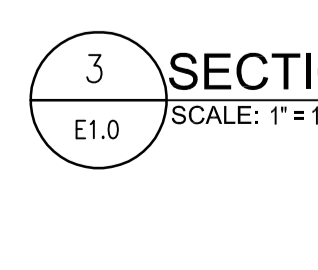


1 PARTIAL BASEMENT FLOOR PLAN - LIGHTING DEMOLITION
SCALE: 1/8" = 1'-0"



2 PARTIAL BASEMENT FLOOR PLAN - LIGHTING RENOVATION
SCALE: 1/8" = 1'-0"



3 SECTION-BULKHEAD-ELEVATOR LIGHT FIXTURES
SCALE: 1" = 1'-0"

GENERAL NOTES

- A. CONTRACTOR SHALL BE RESPONSIBLE FOR COORDINATING EXACT LAYOUT, ROUTING, ETC. VERIFY EXISTING SERVICES ON SITE. EXACT LOCATION OF ALL ELECTRICAL DEVICES, LIGHT FIXTURES AND EXIT SIGNS ARE TO BE CONFIRMED WITH CONTRACT ADMINISTRATOR PRIOR TO ROUGH-IN.
- B. CONTRACTOR SHALL ENSURE COORDINATION BETWEEN ALL TRADES AND CONTRACT ADMINISTRATOR, ON AND OFF SITE, AS REQUIRED FOR INSTALLATION OF ELECTRICAL EQUIPMENT.
- C. FOR POWER CONDUIT AND WIRING (WIRING FOR LIGHT FIXTURES, SWITCHES, EXIT LIGHT ETC.) PENETRATIONS THROUGH FULL HEIGHT WALL PARTITIONS, PROVIDE OPENINGS TO SUIT CONDUIT AND CABLE PENETRATIONS. SEAL ALL PENETRATIONS THROUGH FIRE RATED WALLS WITH FIRE STOP AS REQUIRED. WHERE NEW CABLES OR CONDUIT HAVE BEEN INSTALLED THROUGH NEW FIRE RATED WALLS, SEAL OPENING AROUND CABLE AND CONDUIT TO MAINTAIN RATING.
- D. FOR ALL EXISTING ELECTRICAL DEVICES, FIXTURES, EQUIPMENT, ETC. THAT ARE TO BE REMOVED, REMOVE EXISTING CONDUIT, WIRE, EQUIPMENT, ETC. BACK TO SOURCE UNLESS OTHERWISE INDICATED.
- E. ALL EQUIPMENT, DEVICES, FIXTURES REMOVED UNDER DEMOLITION SCOPE WILL BE FIRST OFFERED TO THE CITY FOR REFUSAL FOLLOWED BY CONTRACTOR AND FINALLY TO BE LEGALLY DISPOSED OF.
- F. CONTRACTOR SHALL INSTALL J-HOOKS AND HANGERS IN THE CEILING TO SUPPORT ALL EXISTING LOOSE HANGING WIRES.

DEMOLITION KEY NOTES

- 1. DISCONNECT AND REMOVE EXISTING EXIT SIGN, CONDUIT AND WIRE TO REMAIN. EXISTING EXIT SIGN TO BE STORED AND RE-USED AS PART OF THE RENOVATION.
- 2. REMOVE ALL EXISTING WIRE AND CONDUIT ASSOCIATED WITH EXISTING LIGHT FIXTURES (FIXTURES REMOVED BY THE CITY).
- 3. REMOVE ALL TEMPORARY LIGHTING ONCE NEW CEILING LIGHTING IS IN PLACE. REMOVE ALL WIRING BACK TO SOURCE. LEAVE BREAKER FEEDING TEMPORARY LIGHTING AND LABEL AS SPARE. UPDATE PANEL SCHEDULE TO REFLECT CHANGES.

KEY NOTES

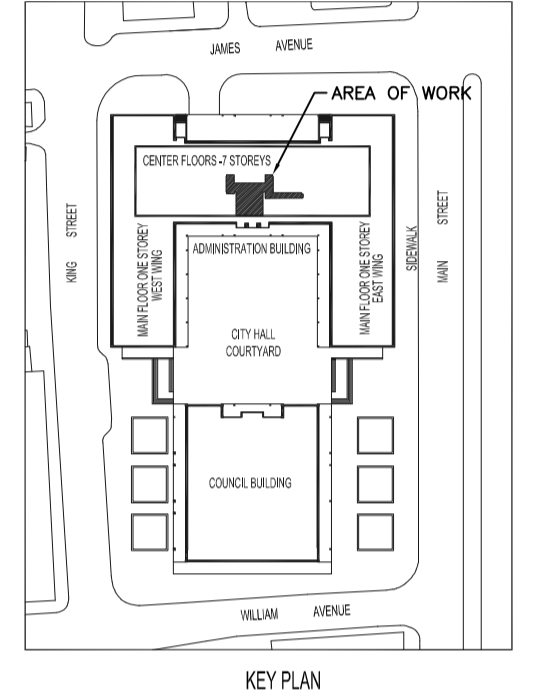
- 1. SUPPLY, WIRE AND INSTALL NEW 24" X 24" LIGHT FIXTURE.
- 2. SUPPLY, WIRE AND INSTALL NEW 6" COMPACT FLUORESCENT FIXTURE.
- 3. SUPPLY, WIRE AND INSTALL NEW 24" X 48" LIGHT FIXTURE.
- 4. REINSTALL AND WIRE EXISTING EXIT SIGN.
- 5. WIRE AND CONNECT NEW FIXTURE TO NEAREST EMERGENCY NIGHT LIGHT CIRCUIT SERVING AREA WITH CAPACITY.
- 6. ALL NEW FIXTURES SHALL BE CONTROLLED BY EXISTING LIGHTING CONTROL SYSTEM (24V DC RELAYS). CONFIRM EXACT LOCATION OF EXISTING RELAYS ON SITE PRIOR TO INSTALLATION. PROVIDE ADDITIONAL RELAYS AS REQUIRED.
- 7. COORDINATE INSTALLATION OF NEW BREAKERS WITH THE CITY.

SYMBOL LEGEND	
[Symbol]	EXIT LIGHT
[Symbol]	FLUORESCENT FIXTURE, A1-PANEL AND CIRCUIT, a-CONTROL
[Symbol]	LIGHT FIXTURE CONNECTED TO EMERGENCY NIGHT LIGHT CIRCUIT (TYPICAL FOR ALL LIGHT FIXTURES)
[Symbol]	DOWN LIGHT
[Symbol]	SURFACE MOUNTED PANEL

• PLEASE NOTE •
ALL EQUIPMENT SHOWN "FADED BACK" IS EXISTING TO REMAIN UNLESS OTHERWISE NOTED.
ALL EQUIPMENT SHOWN "DASHED" IS EXISTING TO BE DEMOLISHED UNLESS OTHERWISE NOTED.
ALL EQUIPMENT SHOWN "SOLID" IS NEW TO BE INSTALLED UNLESS OTHERWISE NOTED.

LUMINAIRE SCHEDULE					SMS ENGINEERING	
FX.T. TYPE	LAMPS	VOLTAGE	DESCRIPTION	NOTES	APPROVED MANUFACTURERS	
BB	2 F32 T8	120V	RECESSED 2x4' IN T-BAR CEILING C/W CAM ACTION HINGED FRAMED .125" K12 ACRYLIC LENS		C & M: 2GRS-232-FS12 CFI: AA2W8-VB LITHONIA: 2GT8232A12125 METALUX: 2GR8-232A.125 PEERLESS: LACH-24G-232-12.125	
BE	2 F32 T8 U	120V	RECESSED 2x2' IN T-BAR CEILING C/W CAM ACTION HINGED FRAMED .125" K12 ACRYLIC LENS		C & M: 2GRS-231U6-FS12 CFI: AA2U6-VB LITHONIA: 2GT82U316A12125 METALUX: 2GR8-2U6A.125 PEERLESS: LACH-22G-231-12.125	
VA	1-26W DTT	120V	RECESSED 1 LAMP FLUORESCENT POT LIGHT C/W BLACK MULTIGROOVE DIE-CAST BAFFLE WHITE TRIM RING - 6 1/2" Ø OPENING		CAPRI: CM6-F126-S1/H65B OR APPROVED EQUAL IN ACCORDANCE WITH B7	

NOTES:
THESE DRAWINGS SHALL NOT BE SCALED.
THE CONTRACTOR SHALL VISIT THE SITE AND SATISFY HIMSELF ALL DIMENSIONS, DATUM, AND DETAILED INFORMATION SHOWN ARE CORRECT.
THE CONTRACTOR IS TO REVIEW AND COORDINATE ALL ARCHITECTURAL, MECHANICAL, ELECTRICAL AND STRUCTURAL DRAWINGS FOR ADDITIONAL OPENINGS THROUGH FLOORS, WALLS, AND CEILINGS FOR DUCT, PIPE & ELECTRICAL RISERS AND ALL OPENINGS NOT SHOWN ON DRAWINGS.
ALL OPENINGS THROUGH FIRE ASSEMBLIES ARE TO BE FIRE STOPPED AND SEALED WITH ULIC APPROVED FIRE STOPPING TO MAINTAIN THE INTEGRITY OF THE FIRE SEPARATION, AND PROVIDE A SMOKE-TIGHT BARRIER.
ALL PRODUCTS AND MATERIALS TO BE USED AND INSTALLED SHALL CONFORM WITH MANUFACTURER'S SPECIFICATIONS & APPLICABLE CODES.
THE CONTRACTOR SHALL BE RESPONSIBLE TO PATCH AND MAKE GOOD ALL EXISTING CONSTRUCTION AFFECTED BY THE REMOVAL OF ALL ITEMS FORMING THE PART OF THE RENOVATION WORK.
WHERE NEW FLOORING AND BASE IS TO BE INSTALLED IN EXISTING AREAS (REFER TO FLOOR PLAN AND ROOM SCHEDULE) THE EXISTING FLOORING SURFACE AND BASE MUST BE REMOVED, UNLESS OTHERWISE NOTED. ALL FLOOR SURFACES SHALL BE PREPARED IN ACCORDANCE TO MANUFACTURER'S RECOMMENDATIONS FOR INSTALLATION OF NEW FLOOR.
WHERE PAINTING OF EXISTING WALLS IS INDICATED ON THE ROOM SCHEDULE, THESE WALLS MUST BE CLEANED OF ANY EXISTING WALL COVERING, PATCHED & PREPARED TO ACCEPT NEW MATERIAL, UNLESS OTHERWISE NOTED.

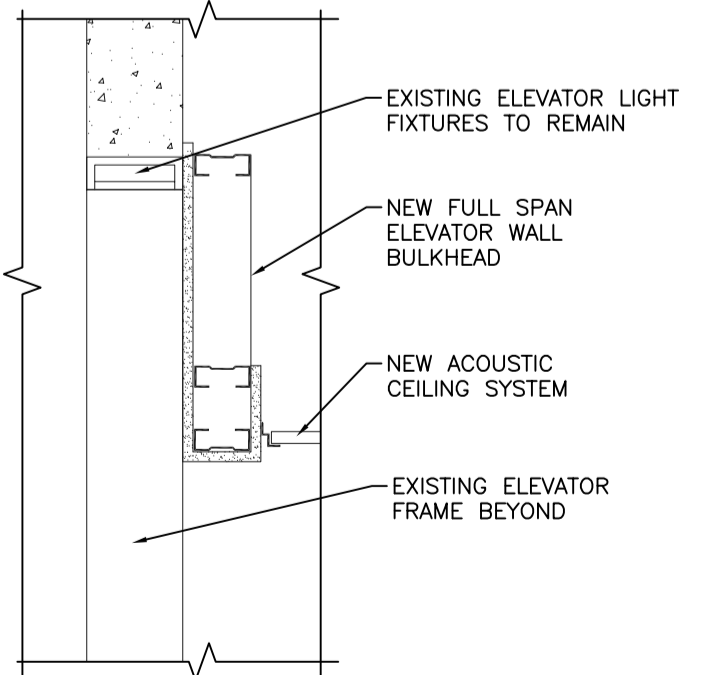


SMS ENGINEERING
SMS Engineering Ltd. Consulting Engineers
770 Bradford Street Winnipeg MB Canada R3H 0N3
Telephone: 204.775.0291 Fax: 204.772.1553
11-173-02
sms@smsgeng.com

APEGM
Certificate of Authorization
SMS Engineering Ltd.
No. 166 Expiry: April 30, 2014



PANEL Z		LOCATION: ELECTRICAL CLOSET B-17	
FED FROM: EXISTING CDP		LOCATION: MAIN ELECTRICAL ROOM	
Designation	Load (VA)	CL. No.	Phase
Existing	15	1	A
Existing	15	2	B
Existing	15	3	C
Existing	15	4	A
Existing	15	5	B
Existing	15	6	C
Existing	15	7	A
Existing	15	8	B
Existing	15	9	C
VOLTAGE: 120/208V, 3Ø, 4W		LOADS:	PH.A 320
CAPACITY: 100A			PH.B 840
MOUNTING SURFACE			PH.C 720
REMARKS: EXISTING		TOTAL:	1880
SUPPLY AND INSTALL NEW 15A SINGLE POLE BREAKERS. ONLY CALCULATED LOAD FOR NEW LIGHT FIXTURES ARE SHOWN. CONTRACTOR TO UPDATE PANEL SCHEDULE ACCORDINGLY.			



SMS ENGINEERING
SMS Engineering Ltd. Consulting Engineers
770 Bradford Street Winnipeg MB Canada R3H 0N3
Telephone: 204.775.0291 Fax: 204.772.1553
sms@smsgeng.com

PANEL SCHEDULE	
Z	510 Main Street Sprinklers-Basement lobby Renovations
PROJECT:	11-173-02
FILE:	17-Mar-14
DATE:	

No.	REVISION/DESCRIPTION	BY	DATE
1	ISSUED FOR BID OPPORTUNITY		03/17/14
0	ISSUED FOR CONSTRUCTION		AS 12/04/13

Winnipeg
THE CITY OF WINNIPEG
PLANNING, PROPERTY AND DEVELOPMENT DEPARTMENT
MUNICIPAL ACCOMMODATIONS DIVISION
3-65 GARRY STREET, R3C 4K4

PROJECT
CITY HALL - ADMINISTRATION BUILDING
BASEMENT & SUB-BASEMENT
FINISHED SURFACE DESIGN

510 MAIN STREET

SHEET TITLE
PARTIAL BASEMENT FLOOR PLAN - LIGHTING DEMOLITION AND RENOVATION

SCALE	PROJECT No:	SHEET No:
AS NOTED	2009-079-03	E1.0