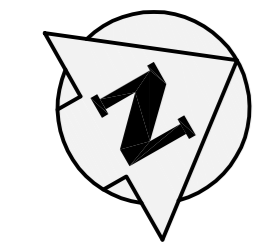
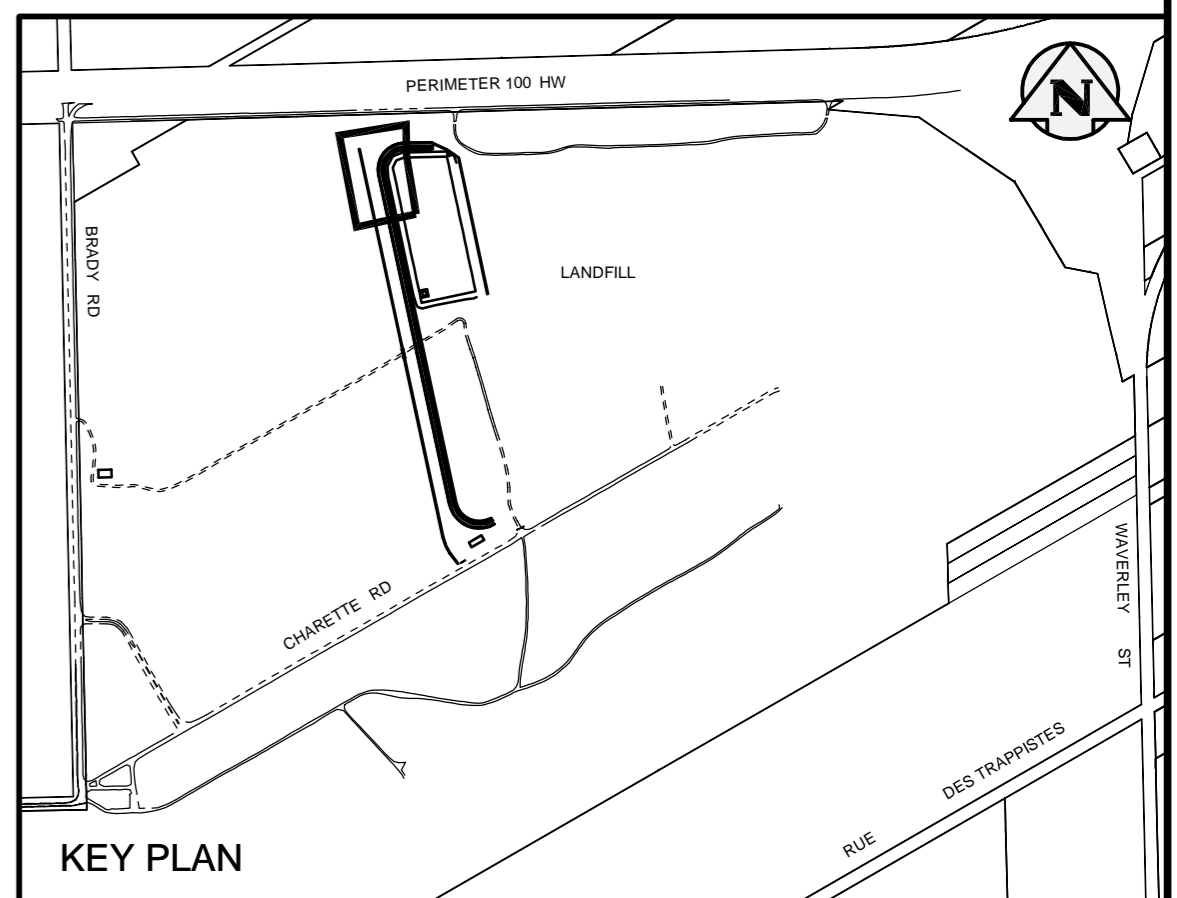
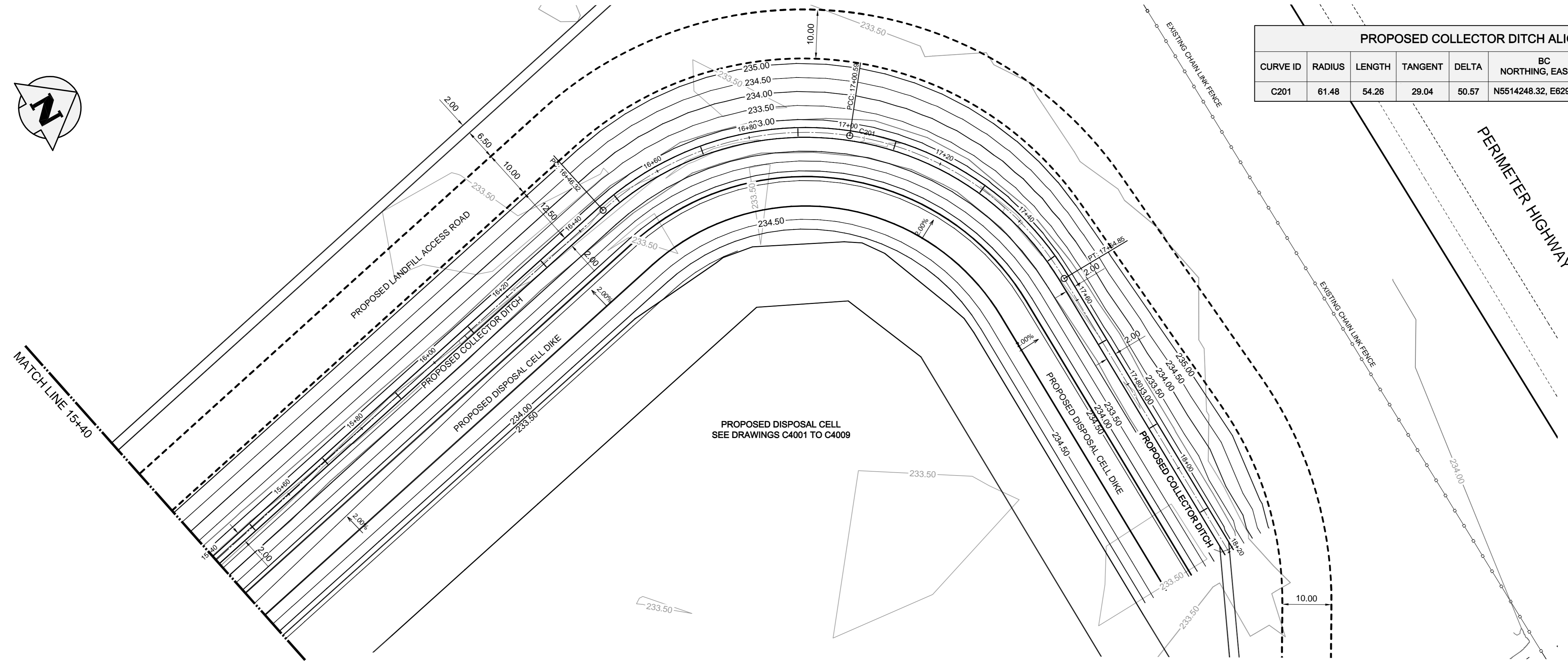


TYPICAL COLLECTOR DITCH SECTION
 (STA 13+30 TO STA 18+20)
 HOR 1:300, VER 1:100

NOTE:
 DITCH AND SLOPE ELEVATIONS
 SHOWN ARE FINAL ELEVATIONS
 THAT INCLUDE 50mm OF SOIL
 AMENDED MATERIAL.

NOTE:
 DITCHES HAVE BEEN ROUGH
 GRADED BY OTHERS.
 CONTRACTOR TO FINISH GRADE
 DITCHES TO DESIGN ELEVATIONS.

CURVE ID	RADIUS	LENGTH	TANGENT	DELTA	BC NORTHING, EASTING	EC NORTHING, EASTING	START STATION	END STATION
C201	61.48	54.26	29.04	50.57	N5514248.32, E629363.51	N5514271.61, E629410.59	17+00.59	17+54.85



MATCH LINE 15+40

BID OPPORTUNITY 259-2014

EXISTING	LEGEND-PLAN	PROPOSED	EXISTING	LEGEND-PLAN	PROPOSED	EXISTING	LEGEND-PLAN	PROPOSED	
				CONTOURS 234.000 DITCH 					
				EDGE OF GRAVEL ROAD 					

APEGM
 Certificate of Authorization
TETRA TECH WEI Inc.
 No. 5313 Date: April 30, 2014

B.M. ELEV.			
00	ISSUED FOR TENDER	14.03.26	GC
NO.	REVISIONS	DATE	BY

TETRA TECH

DESIGNED BY SV	CHECKED BY GS, GC
DRAWN BY GMD	APPROVED BY BLM
HOR. SCALE: 1 : 500	RELEASED FOR CONSTRUCTION
VERTICAL: 1 : 50	DATE 13.11.20

PROVINCE OF MANITOBA
G. A. CHURCHILL
 Member
 25653
 142-22
 REGISTERED PROFESSIONAL ENGINEER

THE CITY OF WINNIPEG
 WATER AND WASTE DEPARTMENT

BRADY ROAD LANDFILL ACCESS ROAD AND DISPOSAL CELL
 NEW COLLECTOR DITCH
 STATION 15+40 TO STATION 17+60

CITY DRAWING NUMBER
 SWD-D-438
 SHEET 11 OF 20
 C3004

CONSULTANT DRAWING NO.
 1300120600-DWG-C0011