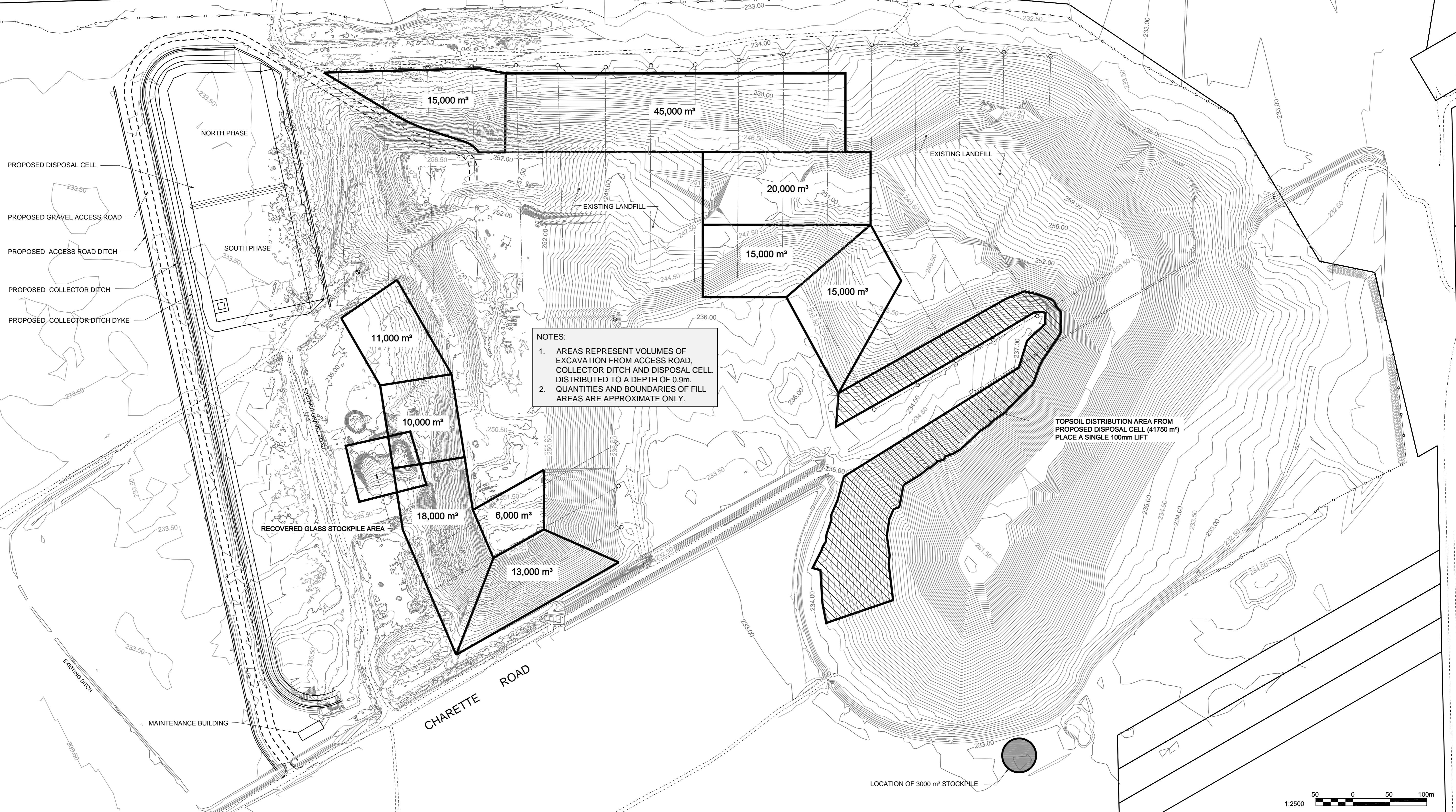


PERIMETER HIGHWAY



NOTES:
 1. AREAS REPRESENT VOLUMES OF EXCAVATION FROM ACCESS ROAD, COLLECTOR DITCH AND DISPOSAL CELL. DISTRIBUTED TO A DEPTH OF 0.9m.
 2. QUANTITIES AND BOUNDARIES OF FILL AREAS ARE APPROXIMATE ONLY.

- PROPOSED DISPOSAL CELL
- PROPOSED GRAVEL ACCESS ROAD
- PROPOSED ACCESS ROAD DITCH
- PROPOSED COLLECTOR DITCH
- PROPOSED COLLECTOR DITCH DYKE

NORTH PHASE

SOUTH PHASE

RECOVERED GLASS STOCKPILE AREA

CHARETTE ROAD

EXISTING LANDFILL

TOPSOIL DISTRIBUTION AREA FROM PROPOSED DISPOSAL CELL (41750 m²) PLACE A SINGLE 100mm LIFT

LOCATION OF 3000 m³ STOCKPILE



BID OPPORTUNITY 259-2014

---	GRAVEL ROAD	---
---	LEACHATE COLLECTION PIPE	---
○	MANHOLE	
→	DITCH	
⊙	TEST PIT	
—○—	CHAIN LINK FENCE	
⊙	ANCHOR	
⊙	TREE	
•	HYDRO POLE	
••	LIGHT STANDARD	
---	EXISTING LEGEND	---
---	PROPOSED	---

EXCAVATION QUANTITIES	
ACCESS ROAD AND DITCH	29,500 m³ (FILL)
COLLECTOR DITCH AND DIKE	8,500 m³ (CUT)
DISPOSAL CELL	218,000 m³ (CUT)
FINAL EXCAVATION TOTAL	197,000 m³ (CUT)

APEGM
 Certificate of Authorization
TETRA TECH WEI Inc.
 No. 5313 Date: April 30, 2014

B.M. ELEV.			
DESIGNED BY	GMD	CHECKED BY	GS
DRAWN BY	GMD	APPROVED BY	BLM
HOR. SCALE:	1 : 2500	RELEASED FOR CONSTRUCTION	
VERTICAL:			
00 ISSUED FOR TENDER	14.03.26	GC	
NO. REVISIONS	DATE	BY	DATE
			14.02.05

TETRA TECH

CONSULTANT DRAWING NO.
 13001200700-DWG-C0020

PROVINCE OF MANITOBA
G. A. CHURCHILL
 Member
 25653
 14-222
 REGISTERED PROFESSIONAL ENGINEER

THE CITY OF WINNIPEG
 WATER AND WASTE DEPARTMENT

BRADY ROAD LANDFILL ACCESS ROAD AND DISPOSAL CELL
 FILL DISTRIBUTION PLAN

CITY DRAWING NUMBER
 SWD-D-447
 SHEET 20 OF 20

C4009