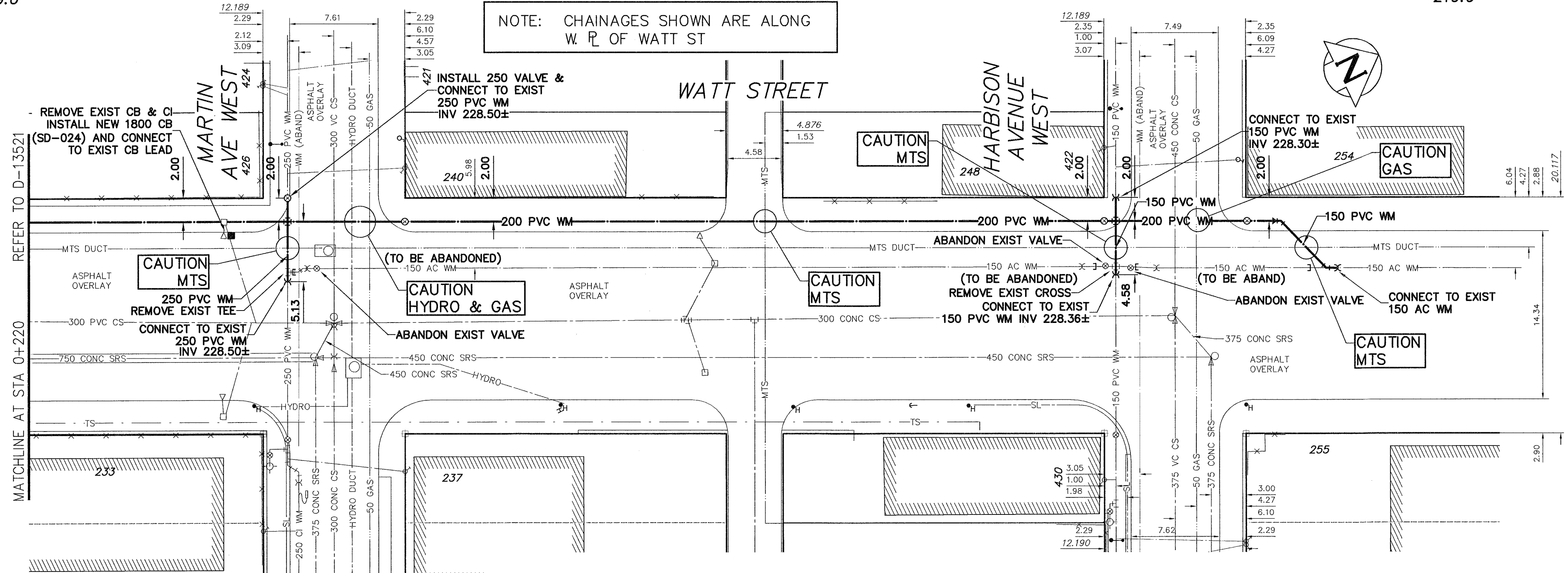


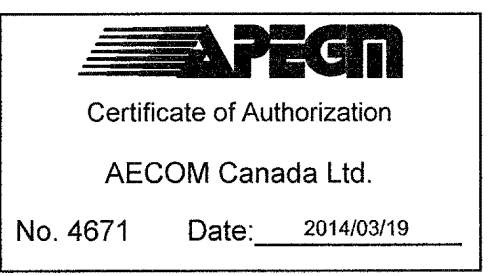
NOTE: CHAINAGES SHOWN ARE ALONG W. of WATT ST



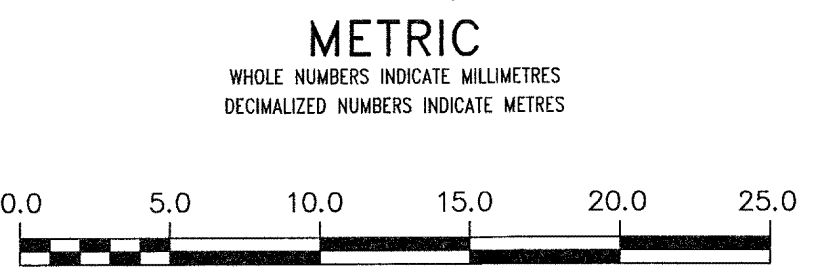
**WATER SERVICE INFORMATION**

ADDRESS	SIZE (mm) MATERIAL (STREET)	SIZE (mm) MATERIAL (PROP.)	SHORT & LONG MEASUREMENT	CORPORATION LOCATION	REMARKS
233 WATT ST	25	25	2.9 W E BLDG LINE	OPP S/C	SERVICED OFF
RESIDENTIAL	CU	CU	6.2 EEL WATT		MARTIN
237 WATT ST	20	20	OPP WL OF WINDOW	1.1 W S/C	SERVICED OFF
COMMERCIAL	CU	CU	5.5 WWL OF WATT		MARTIN
242 WATT ST	20	12	5.5 W E HSE LINE	0.5 E S/C	240 WATT SAME SERV
COMMERCIAL	CU	LEAD	5.5 WWL OF WATT		
248 WATT ST	20	12	2.2 E W HSE LINE	0.2 W S/C	
COMMERCIAL	CU	LEAD	4.3 WWL OF WATT		
254 WATT ST	20	12	3.1 W E HSE LINE	0.5 E S/C	
COMMERCIAL	CU	LEAD	3.1 WWL WATT		
255 WATT ST	20	20	8.9 E W BLDG LINE	0.2 W S/C	
COMMERCIAL	CU	CU	9.2 EEL WATT		
426 MARTIN AV W	20	20	3.8 E W HSE LINE	0.8 E S/C	
RESIDENTIAL	CU	CU	9.6 WWL WATT		

**NOTE:** REPLACE ALL EXISTING LEAD SERVICES FROM THE PROPOSED WATERMAIN TO PROPERTY LINE. RECONNECT ALL OTHER SERVICES UNLESS NOTED. LOCATION OF WATER SERVICES SHOWN ON DRAWINGS ARE APPROXIMATE. THE CONTRACTOR SHALL FIELD LOCATE ALL WATER SERVICES PRIOR TO CONSTRUCTION.



ALL VALVES TO BE COUNTER-CLOCKWISE TO CLOSE (RED OPERATING NUT)



**WARNING**  
IF POWER EQUIPMENT OR EXPLOSIVES ARE TO BE USED FOR EXCAVATION ON THIS PROJECT THE CONTRACTOR MUST:  
1) NOTIFY THE GAS COMPANY OF THE PROPOSED LOCATION OF EXCAVATION.  
2) TAKE PRECAUTION TO AVOID DAMAGE TO GAS COMPANY INSTALLATIONS.  
SEE PROVINCIAL REGULATION 210/72 FOR DETAILS

**LOCATION APPROVED UNDERGROUND STRUCTURES**  
SUPV. U/C STRUCTURES COMMITTEE DATE  
NOTE:  
LOCATION OF UNDERGROUND STRUCTURES AS SHOWN ARE BASED ON THE BEST INFORMATION AVAILABLE BUT NO GUARANTEE IS GIVEN THAT ALL EXISTING UTILITIES ARE SHOWN OR THAT THE GIVEN LOCATIONS ARE EXACT. CONFIRMATION OF EXISTENCE AND EXACT LOCATION OF ALL SERVICES MUST BE OBTAINED FROM THE INDIVIDUAL UTILITIES BEFORE PROCEEDING WITH CONSTRUCTION.

B.M. 27-031  
ELEV. 231.023m  
858647-N.W. Cor. Watt St. & Chalmers Ave., Tblt. on top of 0.00 m dia. x 2.24 m iron pipe, beneath Valve Box 2.5 m E. of W.L. of Watt St. & on N.L. of Chalmers Ave.

CONSTRUCTION COMPLETION DATE:

NO.	REVISIONS	DATE	BY
0	ISSUED FOR TENDER	14/03/25	GSK
A	ISSUED FOR REVIEW	14/03/19	GSK

**AECOM**

DESIGNED BY GK  
DRAWN BY JP  
SCALE: HORIZONTAL 1:250  
VERTICAL 1:50  
PLOT DATE: 2014 03 20

CHECKED BY [Signature]  
APPROVED BY [Signature]  
RELEASED FOR CONSTRUCTION [Signature]  
DATE



**THE CITY OF WINNIPEG**  
WATER AND WASTE DEPARTMENT  
ENGINEERING DIVISION

2014 WATERMAIN RENEWALS  
CONTRACT 2  
WATT STREET  
40m NORTH OF UNION AVENUE WEST TO  
HARBISON AVENUE WEST

SHEET 7 OF 15  
CITY DRAWING NUMBER  
D-13522

CONSULTANT DRAWING NUMBER  
C-1006

FILE PATH: P:\60313969\900-Work\910-CAD\20-SHEETS\C  
FILE NAME: 60313969-SHT-00-Con2-C-1001\_C-1016