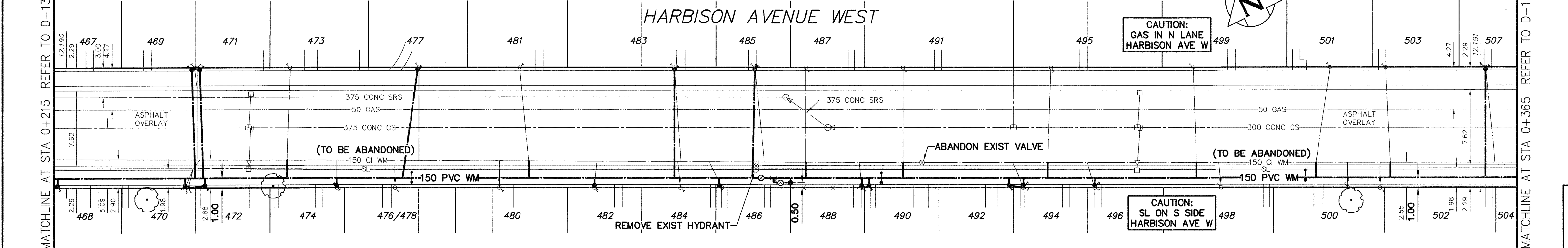


NOTE: CHAINAGES SHOWN ARE ALONG S. P. OF HARBISON AVE



NOTE: PERMANENT PAVEMENT RESTORATION TO BE COMPLETED UNDER PUBLIC WORKS CONTRACT

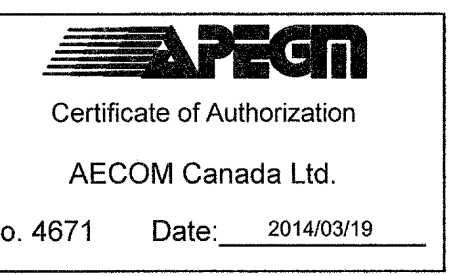
**WATER SERVICE INFORMATION**

ADDRESS	SIZE (mm) MATERIAL (STREET)	SIZE (mm) MATERIAL (PROP.)	SHORT & LONG MEASUREMENT	CORPORATION LOCATION	REMARKS
468 HARBISON AV W	16	12	0.6 E H HSE LINE	114.6 E EL WATT	DBL SER 468 HARBISON RENEW TO PROPERTY
469 HARBISON AV W	12	12	114.0 EEL WATT		
470 HARBISON AV W	12	12	0.6 E H HSE LINE	127.4 E EL WATT	DBL SER 471 HARBISON RENEW TO PROPERTY
471 HARBISON AV W	12	12	0.5 W W HSE LINE	1.7 E S/C	DBL SER 472 HARBISON RENEW TO PROPERTY
472 HARBISON AV W	12	12	0.5 W W HSE LINE	OPP S/C	DBL SER 469 HARBISON RENEW TO PROPERTY
473 HARBISON AV W	20	20	1.5 W W BLDG LINE	1.0 W/W LL	DBL SER 470 HARBISON RENEW TO PROPERTY
474 HARBISON AV W	20	20	1.2 E W HSE LINE	0.3 W S/C	
475 HARBISON AV W	20	20	139.3 EEL WATT		
476 HARBISON AV W	20	20	0.3 W E BLDG LINE	OPP S/C	SERVICE BOX PREVIOUSLY RENEWED RENEW TO PROPERTY
477 HARBISON AV W	20	20	2.6 E W HSE LINE	OPP S/C	DUPLEX KNOWN AS 476-78
478 HARBISON AV W	20	20	2.6 W W HSE LINE	OPP S/C	
479 HARBISON AV W	20	20	149.7 EEL WATT	OPP S/C	
480 HARBISON AV W	20	20	3.4 E W HSE LINE	OPP S/C	S/C UNDER FENCE WEST GATE POST
481 HARBISON AV W	20	20	26.2 W 2ND HYDT E WATT		

ADDRESS	SIZE (mm) MATERIAL (STREET)	SIZE (mm) MATERIAL (PROP.)	SHORT & LONG MEASUREMENT	CORPORATION LOCATION	REMARKS
481 HARBISON AV W	20	20	0.9 E S/C		
482 HARBISON AV W	12	12	2.1 E W LOTLINE	170.7 E EL WATT	RENEW TO PROPERTY
483 HARBISON AV W	12	12	1.8 E W LOTLINE	179.2 E EL WATT	RENEW TO PROPERTY
484 HARBISON AV W	20	20	178.6 EEL WATT	0.3 W S/C	
485 HARBISON AV W	12	12	3.1 E W LOTLINE	187.8 E EL WATT	RENEW TO PROPERTY
486 HARBISON AV W	16	12	186.8 EEL WATT	0.3 W S/C	RENEW TO PROPERTY
487 HARBISON AV W	20	20	0.8 E W HSE LINE	OPP S/C	REVERSE TAP
488 HARBISON AV W	16	12	0.3 E E LOTLINE	197.5 E EL WATT	DBL SER 490 HARBISON RENEW TO PROPERTY
489 HARBISON AV W	16	12	0.3 E E LOTLINE	197.5 E EL WATT	DBL SER 488 HARBISON RENEW TO PROPERTY
490 HARBISON AV W	20	20	2.0 E W HSE LINE	OPP S/C	REVERSE TAP
491 HARBISON AV W	20	20	201.8 EEL WATT		

ADDRESS	SIZE (mm) MATERIAL (STREET)	SIZE (mm) MATERIAL (PROP.)	SHORT & LONG MEASUREMENT	CORPORATION LOCATION	REMARKS
492 HARBISON AV W	16	12	0.6 W W HSE LINE	213.1 E EL WATT	DBL SER WITH 494 RENEW TO PROPERTY
493 HARBISON AV W	16	12	214.3 EEL WATT		
494 HARBISON AV W	16	12	0.6 W W HSE LINE	213.1 E EL WATT	DBL SER WITH 492 RENEW TO PROPERTY
495 HARBISON AV W	20	20	2.0 E W HSE LINE	0.3 W S/C	REVERSE TAP
496 HARBISON AV W	12	12	8.4 WEL HOUSE	0.9 W S/C	RENEW TO PROPERTY
497 HARBISON AV W	20	20	221.9 EEL WATT	0.9 W S/C	
498 HARBISON AV W	20	20	3.5 E W HSE LINE	0.3 W S/C	
499 HARBISON AV W	20	20	46.6 E 2ND HYDT E WATT		
500 HARBISON AV W	20	20	0.5 E W HSE LINE	0.3 E S/C	
501 HARBISON AV W	20	20	43.0 E 2ND HYDT E WATT		
502 HARBISON AV W	20	20	2.7 W E HSE LINE	4.0 W E LOTLINE	
503 HARBISON AV W	20	20	2.0 W/EBL		
504 HARBISON AV W	20	20	2.6 E W HSE LINE	1.4 W S/C	
505 HARBISON AV W	20	20	46.3 W 3RD HYDT E WATT		
506 HARBISON AV W	20	20	2.0 W W BLDG LINE	OPP S/C	FORMER DBL SER 504
507 HARBISON AV W	20	20	0.5 W/WL		
508 HARBISON AV W	20	20	0.3 E W HSE LINE	0.5 E S/C	
509 HARBISON AV W	20	20	39.6 W 3RD HYDT E WATT		
510 HARBISON AV W	12	12	2.1 E W HSE LINE	276.5 E EL WATT	RENEW TO PROPERTY
511 HARBISON AV W	12	12	275.5 EEL WATT		

NOTE: REPLACE ALL EXISTING LEAD SERVICES FROM THE PROPOSED WATERMAIN TO PROPERTY LINE. RECONNECT ALL OTHER SERVICES UNLESS NOTED. LOCATION OF WATER SERVICES SHOWN ON DRAWINGS ARE APPROXIMATE. THE CONTRACTOR SHALL FIELD LOCATE ALL WATER SERVICES PRIOR TO CONSTRUCTION.



ALL VALVES TO BE COUNTER-CLOCKWISE TO CLOSE (RED OPERATING NUT)

**WARNING**

IF POWER EQUIPMENT OR EXPLOSIVES ARE TO BE USED FOR EXCAVATION ON THIS PROJECT THE CONTRACTOR MUST:

- 1) NOTIFY THE GAS COMPANY OF THE PROPOSED LOCATION OF EXCAVATION.
- 2) TAKE PRECAUTION TO AVOID DAMAGE TO GAS COMPANY INSTALLATIONS.

SEE PROVINCIAL REGULATION 210/72 FOR DETAILS

---

**LOCATION APPROVED UNDERGROUND STRUCTURES**

SUPV. U/G STRUCTURES COMMITTEE DATE

NOTE: LOCATION OF UNDERGROUND STRUCTURES AS SHOWN ARE BASED ON THE BEST INFORMATION AVAILABLE BUT NO GUARANTEE IS GIVEN THAT ALL EXISTING UTILITIES ARE SHOWN OR THAT THE GIVEN LOCATIONS ARE EXACT. CONFIRMATION OF EXISTENCE AND EXACT LOCATION OF ALL SERVICES MUST BE OBTAINED FROM THE INDIVIDUAL UTILITIES BEFORE PROCEEDING WITH CONSTRUCTION.

B.M. 27-031  
ELEV. 231.023m

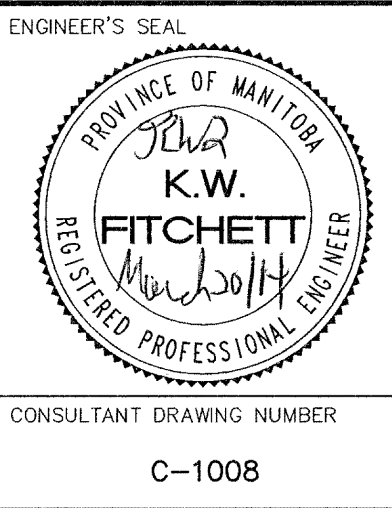
898647-N.W. Cor. Watt St. & Chalmers Ave., Tblt. on top of 0.05 m dia. x 2.4 m iron pipe, beneath Valve Box 2.5 m E. of W.L. of Watt St. & on N.L. of Chalmers Ave.

CONSTRUCTION COMPLETION DATE:

0	ISSUED FOR TENDER	14/03/25	GSK
A	ISSUED FOR REVIEW	14/03/19	GSK
NO.	REVISIONS	DATE	BY

**AECOM**

DESIGNED BY: GK  
CHECKED BY: [Signature]  
DRAWN BY: JP  
APPROVED BY: [Signature]  
SCALE: HORIZONTAL 1:250, VERTICAL 1:50  
DATE: 2014 03 20



**THE CITY OF WINNIPEG**  
WATER AND WASTE DEPARTMENT  
ENGINEERING DIVISION

2014 WATERMAIN RENEWALS  
CONTRACT 2  
HARBISON AVENUE WEST  
115m EAST OF WATT STREET TO  
265m EAST OF WATT STREET

SHEET 9 OF 15  
CITY DRAWING NUMBER D-13524

CONSULTANT DRAWING NUMBER C-1008

FILE PATH: P:\60313969\900-Work\910-CAD\20-SHEETS\C  
FILE NAME: 60313969-SH1-00-Com2-C-1001\_C-1018