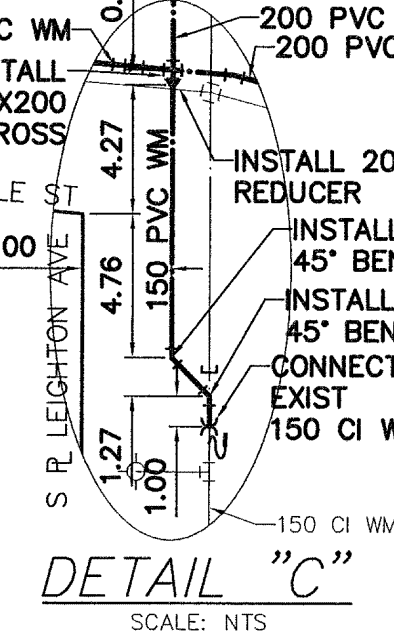
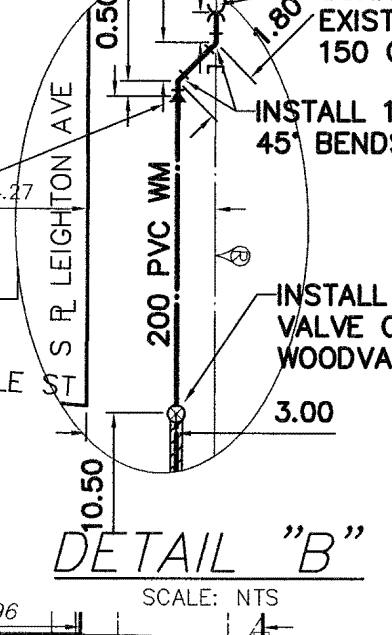
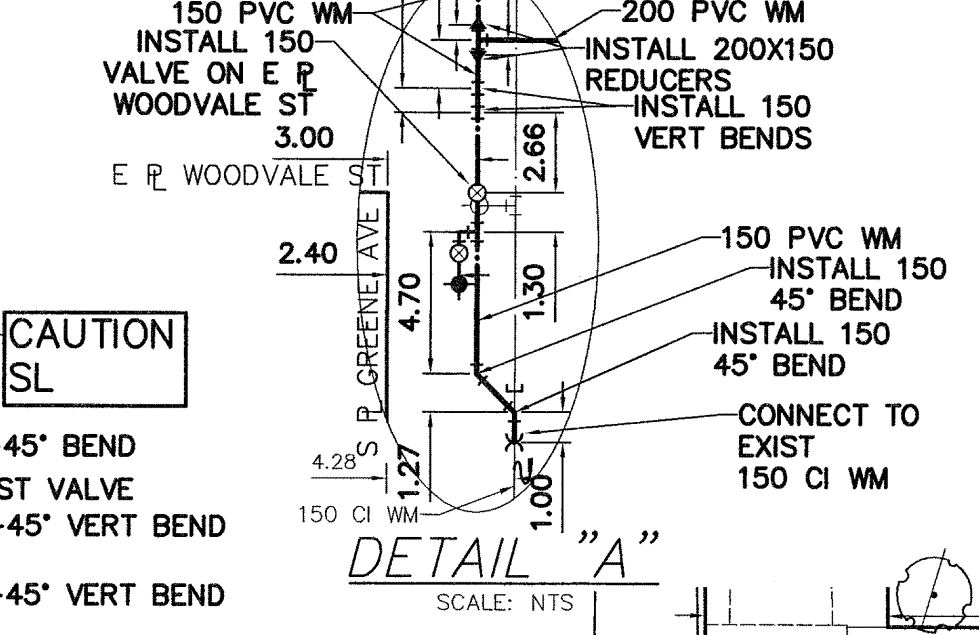
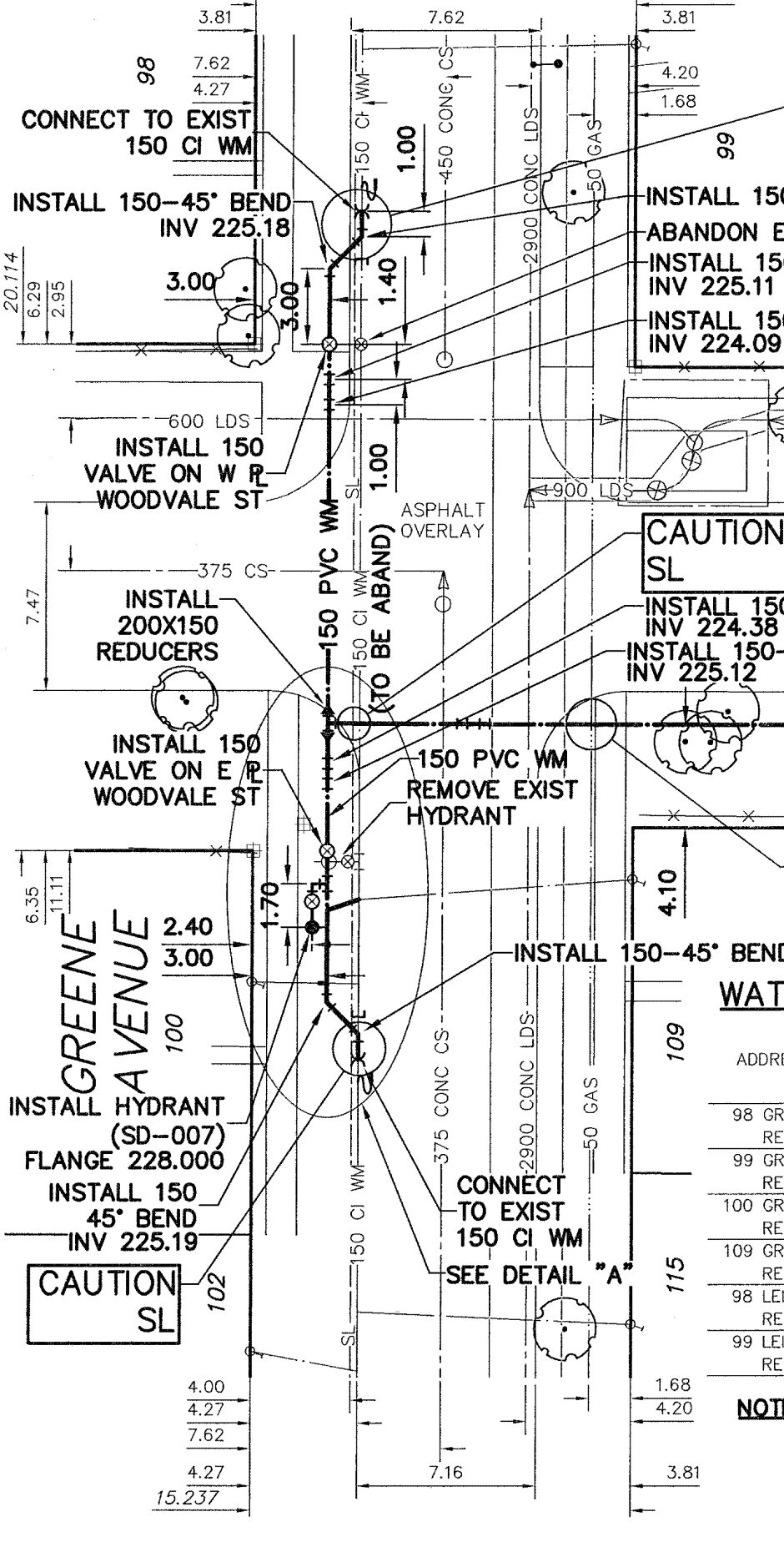


NOTE: CHAINAGES SHOWN ARE ALONG E. R. OF WOODVALE ST



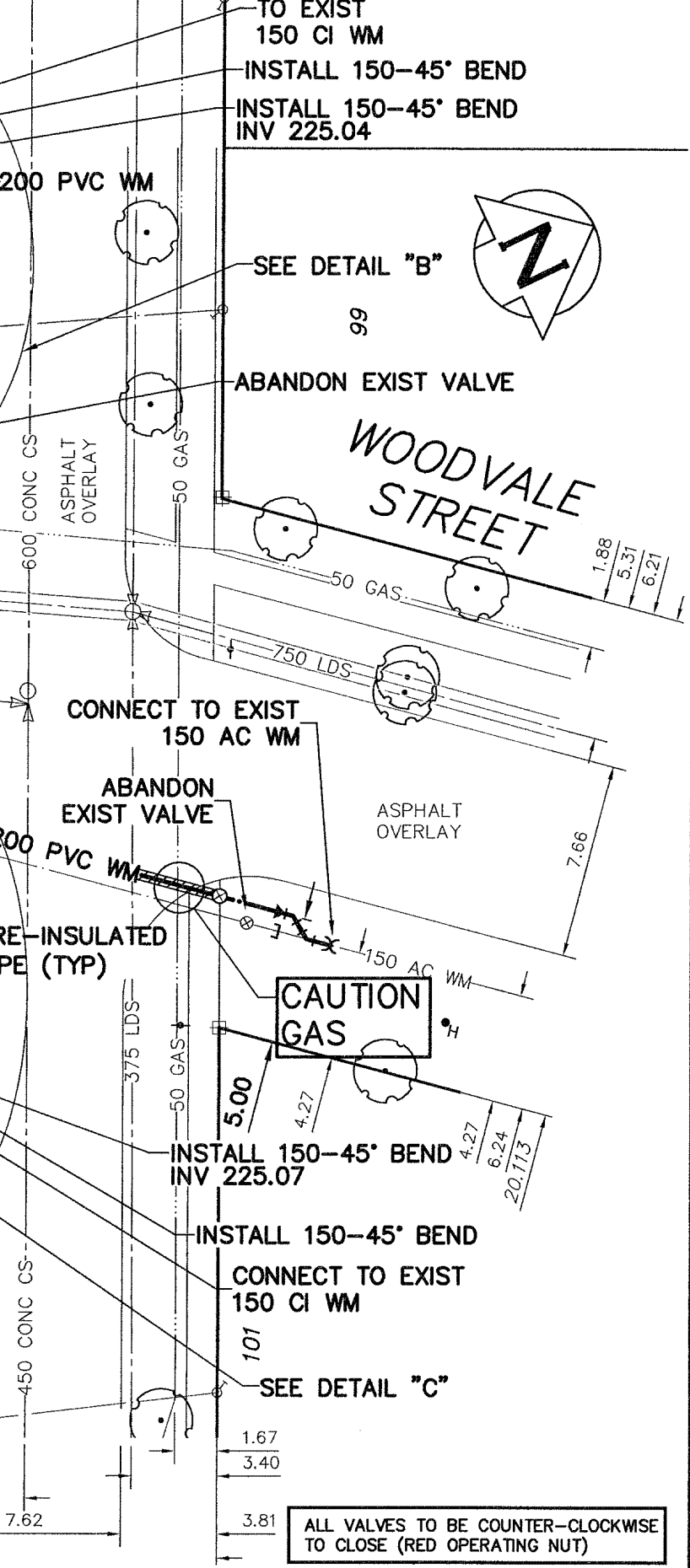
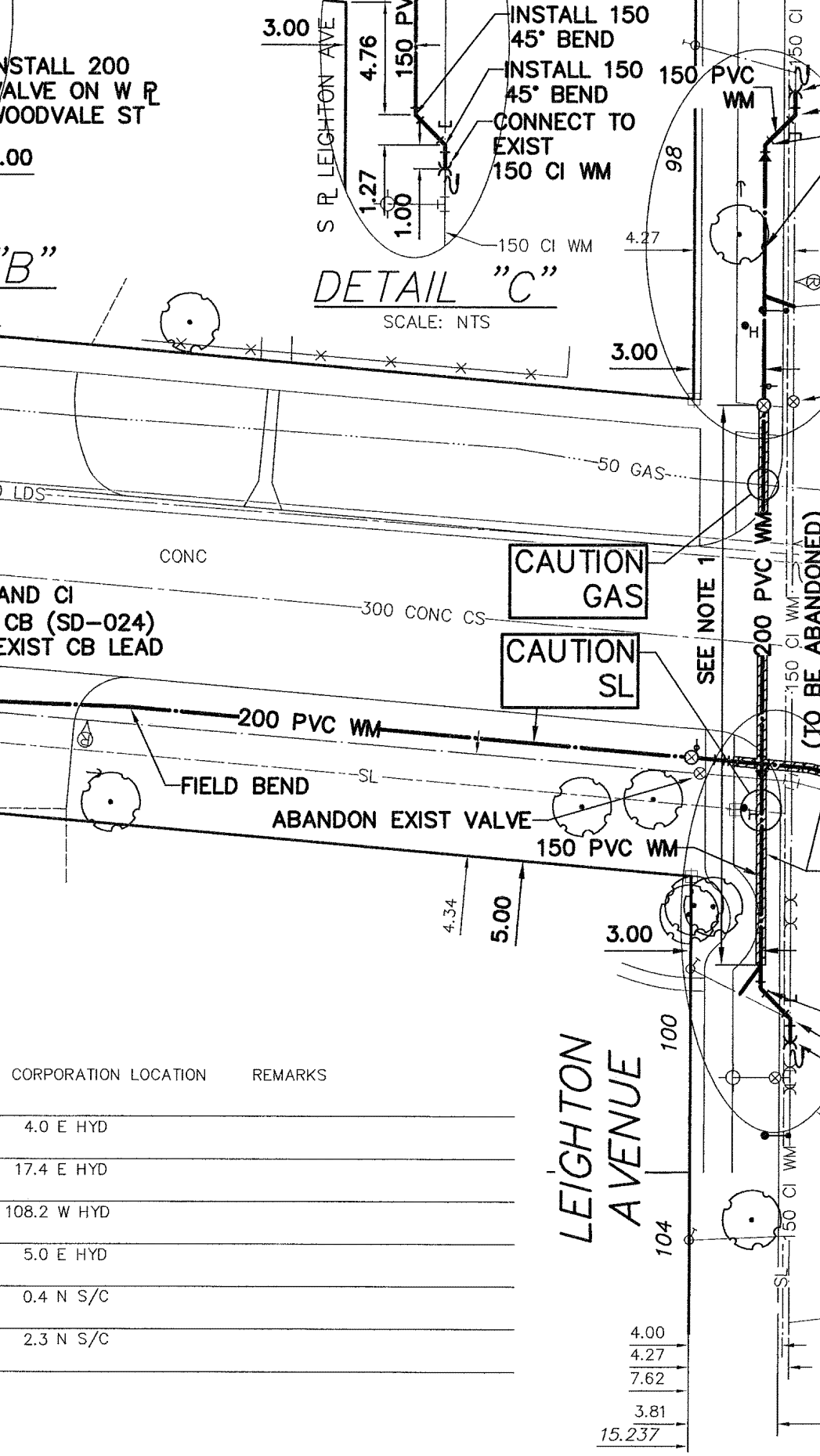
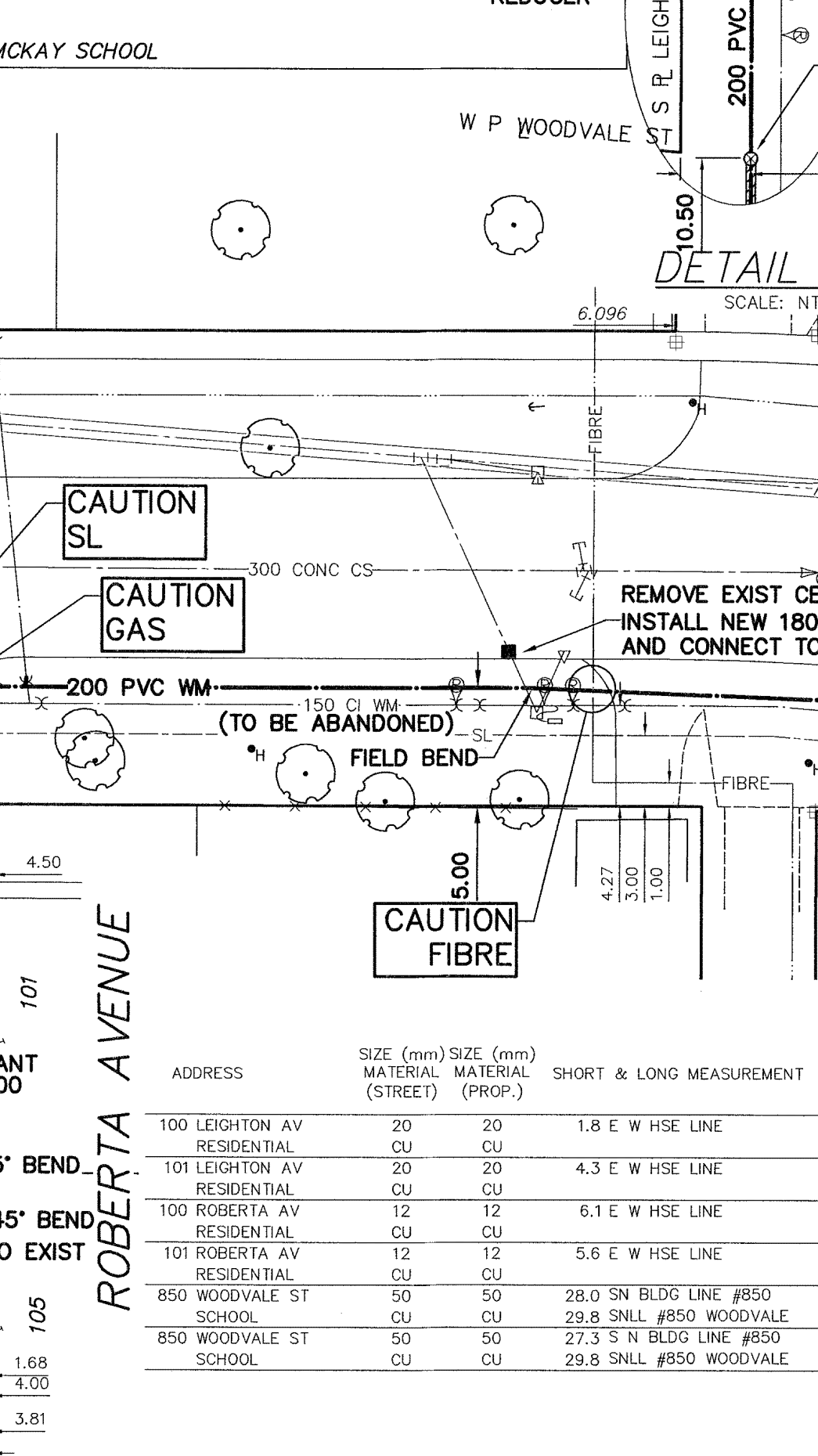
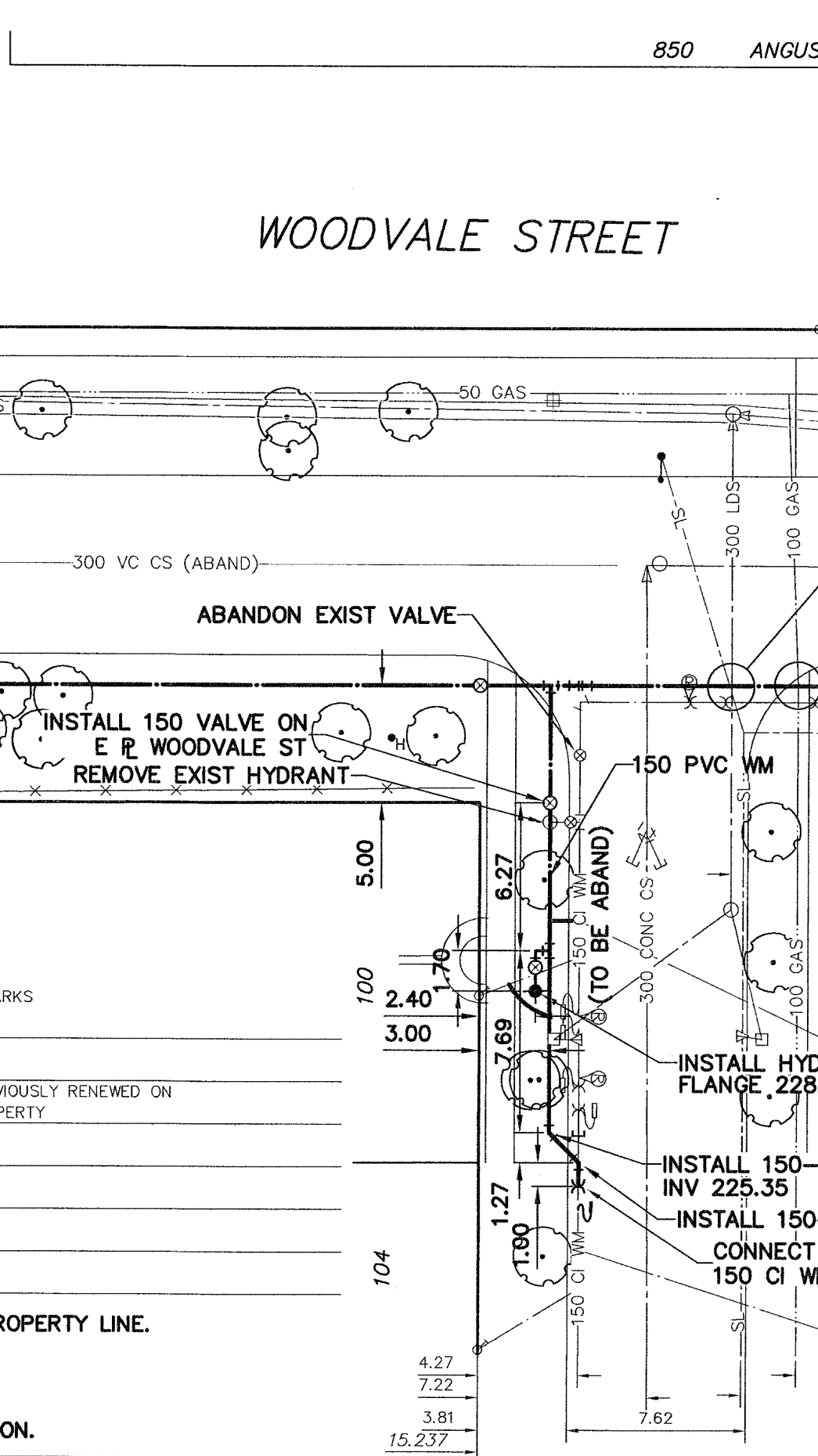
NOTE 1: PRE-INSULATED WM 50mm MIN THICK INSTALL 100mm THICK BOX INSULATION (SD-018) AT FITTINGS AND OVER LAP PRE-INSULATED PIPE 0.5m



**WATER SERVICE INFORMATION**

ADDRESS	SIZE (mm)	SIZE (mm)	SHORT & LONG MEASUREMENT	CORPORATION LOCATION	REMARKS
98 GREENE AV RESIDENTIAL	12	12	0.6 W W HSE LINE	14.0 W VALVE	
99 GREENE AV RESIDENTIAL	20	20	1.2 E W HSE LINE	0.3 E S/C	PREVIOUSLY RENEWED ON PROPERTY
100 GREENE AV RESIDENTIAL	20	12	4.0 E W HSE LINE	4.6 E HYD	
109 GREENE AV RESIDENTIAL	20	20	0.9 E W HSE LINE	1.2 E HYD	
98 LEIGHTON AV RESIDENTIAL	12	12	1.8 W W HSE LINE	37.0 W HYD	
99 LEIGHTON AV RESIDENTIAL	20	20	3.1 E W HSE LINE	27.1 W HYD	

NOTE: REPLACE ALL EXISTING LEAD SERVICES FROM THE PROPOSED WATERMAIN TO PROPERTY LINE. RECONNECT ALL OTHER SERVICES UNLESS NOTED. LOCATION OF WATER SERVICES SHOWN ON DRAWINGS ARE APPROXIMATE. THE CONTRACTOR SHALL FIELD LOCATE ALL WATER SERVICES PRIOR TO CONSTRUCTION.



**METRIC**  
WHOLE NUMBERS INDICATE MILLIMETRES  
DECIMALIZED NUMBERS INDICATE METRES



**WARNING**  
IF POWER EQUIPMENT OR EXPLOSIVES ARE TO BE USED FOR EXCAVATION ON THIS PROJECT THE CONTRACTOR MUST:  
1) NOTIFY THE GAS COMPANY OF THE PROPOSED LOCATION OF EXCAVATION.  
2) TAKE PRECAUTION TO AVOID DAMAGE TO GAS COMPANY INSTALLATIONS.  
SEE PROVINCIAL REGULATION 210/72 FOR DETAILS

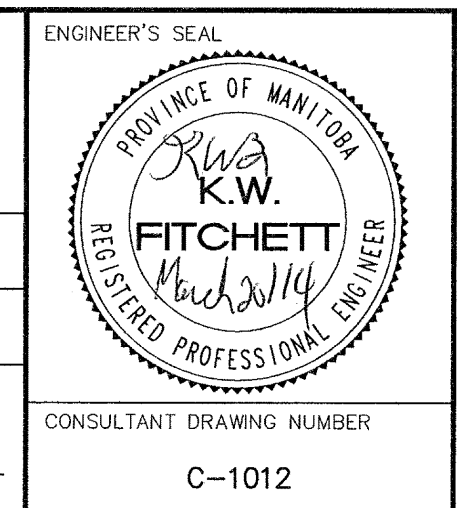
**LOCATION APPROVED UNDERGROUND STRUCTURES**  
SUPV. U/G STRUCTURES COMMITTEE DATE  
NOTE: LOCATION OF UNDERGROUND STRUCTURES AS SHOWN ARE BASED ON THE BEST INFORMATION AVAILABLE BUT NO GUARANTEE IS GIVEN THAT ALL EXISTING UTILITIES ARE SHOWN OR THAT THE GIVEN LOCATIONS ARE EXACT. CONFIRMATION OF EXISTENCE AND EXACT LOCATION OF ALL SERVICES MUST BE OBTAINED FROM THE INDIVIDUAL UTILITIES BEFORE PROCEEDING WITH CONSTRUCTION.

B.M. 12-049  
ELEV. 229.300m  
CONSTRUCTION COMPLETION DATE:

NO.	ISSUED FOR	DATE	BY
0	ISSUED FOR TENDER	14/03/25	GSK
A	ISSUED FOR REVIEW	14/03/19	GSK

**AECOM**

DESIGNED BY	GK	CHECKED BY	[Signature]
DRAWN BY	JP	APPROVED BY	[Signature]
SCALE:	HORIZONTAL 1:250	VERTICAL 1:50	
DATE	2014 03 20	DATE	



**THE CITY OF WINNIPEG**  
WATER AND WASTE DEPARTMENT  
ENGINEERING DIVISION

2014 WATERMAIN RENEWALS  
CONTRACT 2  
**WOODVALE STREET**  
GREENE AVENUE TO  
LEIGHTON AVENUE

SHEET 13 OF 15  
CITY DRAWING NUMBER  
D-13528