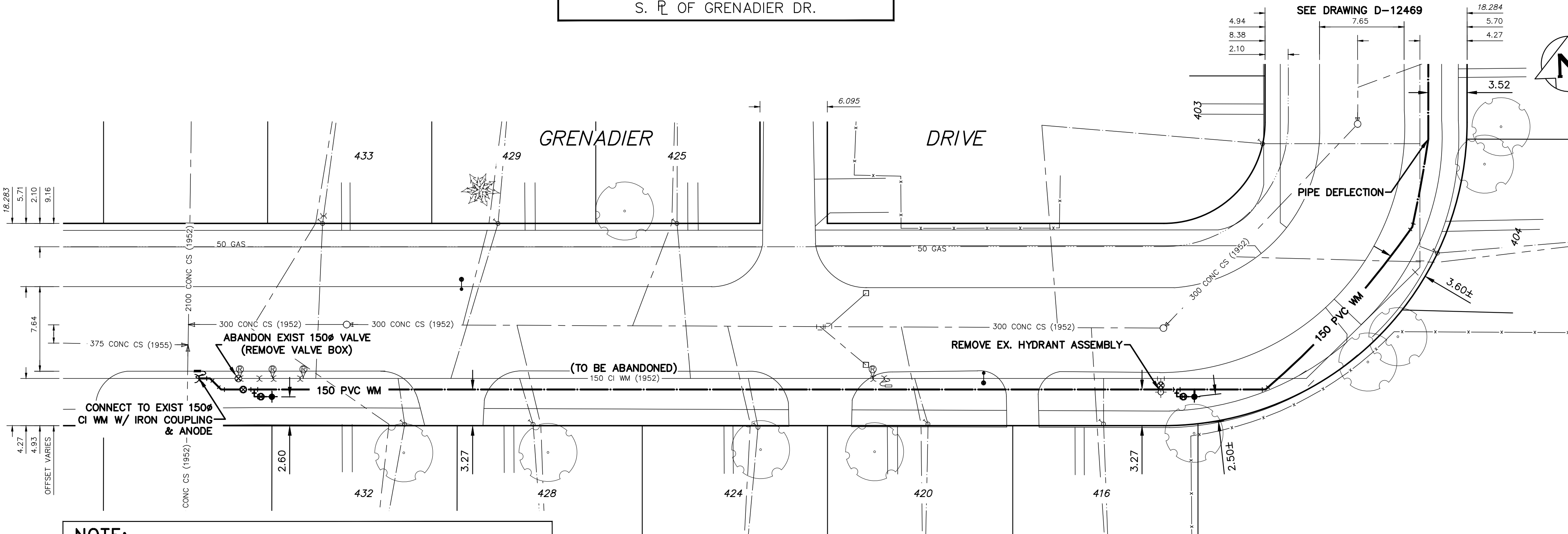


NOTE: CHAINAGES SHOWN ARE ALONG S. R. OF GRENADIER DR.

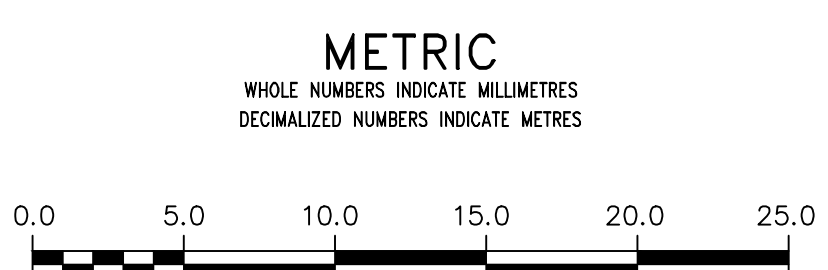


WATER SERVICE INFORMATION

ADDRESS	SIZE (mm)	SIZE (mm)	SHORT & LONG MEASUREMENT	CORP. LOCATION	REMARKS
433 GRENADIER DRIVE RESIDENTIAL	150 CI	20 COPPER	5 E/WHL UNKNOWN	UNKNOWN	-
432 GRENADIER DRIVE RESIDENTIAL	150 CI	20 COPPER	5.5 W/EHL 34 EEL DONCASTER	2 W OF S/C	FURTHER CORP/TEE MEAS - 32 EEL DONCASTER
429 GRENADIER DRIVE RESIDENTIAL	150 CI	20 COPPER	5 E/WHL 65 EEL DONCASTER	14 W OF S/C	FURTHER CORP/TEE MEAS - 51 EEL DONCASTER
428 GRENADIER DRIVE RESIDENTIAL	150 CI	20 COPPER	8 E/WHL 71 EEL DONCASTER	4 W OF S/C	FURTHER CORP/TEE MEAS - 67 EEL DONCASTER
425 GRENADIER DRIVE RESIDENTIAL	150 CI	20 COPPER	10 E/WHL 114 EEL DONCASTER	4 E OF S/C	FURTHER CORP/TEE MEAS - 118 EEL DONCASTER
424 GRENADIER DRIVE RESIDENTIAL	150 CI	20 COPPER	17 E/WHL 133 EEL DONCASTER	2 W OF S/C	FURTHER CORP/TEE MEAS - 131 EEL DONCASTER
420 GRENADIER DRIVE RESIDENTIAL	150 CI	20 COPPER	11 E/WHL 183 EEL DONCASTER	4 W OF S/C	FURTHER CORP/TEE MEAS - 179 EEL DONCASTER
416 GRENADIER DRIVE RESIDENTIAL	150 CI	20 COPPER	11 E/WHL 218 EEL DONCASTER	OPP S/C	-
404 GRENADIER DRIVE RESIDENTIAL	150 CI	20 COPPER	7 N/SHL 810 SSL LANE	2 N OF S/C	TAPPED ON TURN OF W/M FURTHER CORP/TEE MEAS - 808 SSL LANE
403 GRENADIER DRIVE RESIDENTIAL	150 CI	20 COPPER	7 N/SHL 23 NSL GRENADIER	OPP S/C	-

LEAD SERVICES TO BE RENEWED TO R. ALL OTHERS TO BE RECONNECTED

NOTE: ALL GATE VALVES ARE CLOCKWISE TO OPEN W/ A RED OPERATING NUT



WARNING
IF POWER EQUIPMENT OR EXPLOSIVES ARE TO BE USED FOR EXCAVATION ON THIS PROJECT THE CONTRACTOR MUST:
1) NOTIFY THE GAS COMPANY OF THE PROPOSED LOCATION OF EXCAVATION.
2) TAKE PRECAUTION TO AVOID DAMAGE TO GAS COMPANY INSTALLATIONS.
SEE PROVINCIAL REGULATION 210/72 FOR DETAILS

LOCATION APPROVED UNDERGROUND STRUCTURES
SUPV. U/G STRUCTURES COMMITTEE DATE
NOTE: LOCATION OF UNDERGROUND STRUCTURES AS SHOWN ARE BASED ON THE BEST INFORMATION AVAILABLE BUT NO GUARANTEE IS GIVEN THAT ALL LOCATIONS ARE EXACT. CONFIRMATION OF EXISTENCE AND EXACT LOCATION OF ALL SERVICES MUST BE OBTAINED FROM THE INDIVIDUAL UTILITIES BEFORE PROCEEDING WITH CONSTRUCTION.

B.M. ELEV. _____
CONSTRUCTION COMPLETION DATE: YYYY MM DD _____

NO.	REVISIONS	DATE	BY
2	BID OPPORTUNITY 293-2014	MARCH/14	P.R.
1	DESIGN REVIEW W & W	MARCH/14	P.R.

WSP 1600 BUFFALO PLACE WINNIPEG, MB, R3T 6B8 PHONE: 204-477-6650 FAX: 204-474-2864 WWW.WSPGROUP.COM

DESIGNED BY P.R.	CHECKED BY S.M.
DRAWN BY P.R.	APPROVED BY I.McK.
SCALE: HORIZONTAL 1:250 VERTICAL 1:50	RELEASED FOR CONSTRUCTION S. COURNOYER, P. ENG
DATE 2014 03 25	DATE 2014 03 21

ENGINEER'S SEAL
PROVINCE OF MANITOBA
REGISTERED PROFESSIONAL ENGINEER
I. G. McKINNON

THE CITY OF WINNIPEG
WATER AND WASTE DEPARTMENT
ENGINEERING DIVISION

2014 WATERMAIN RENEWALS
GRENADIER DRIVE (S. LEG)
170M EEL OF EDGELAND BOULEVARD TO 280M EEL OF EDGELAND BOULEVARD

SHEET 2 OF 3
CITY DRAWING NUMBER D-12468