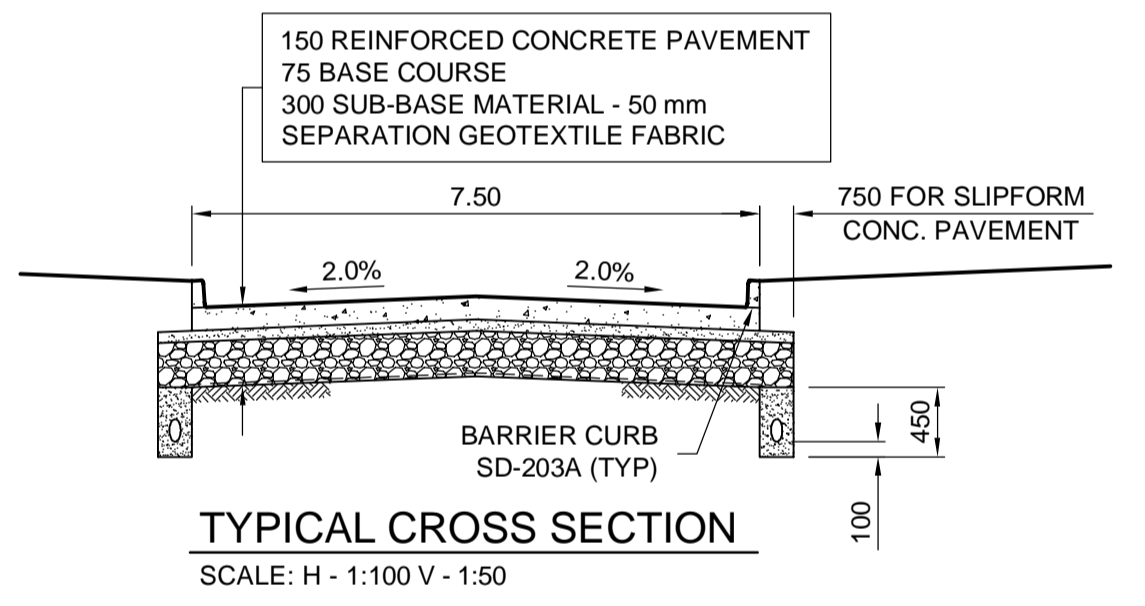
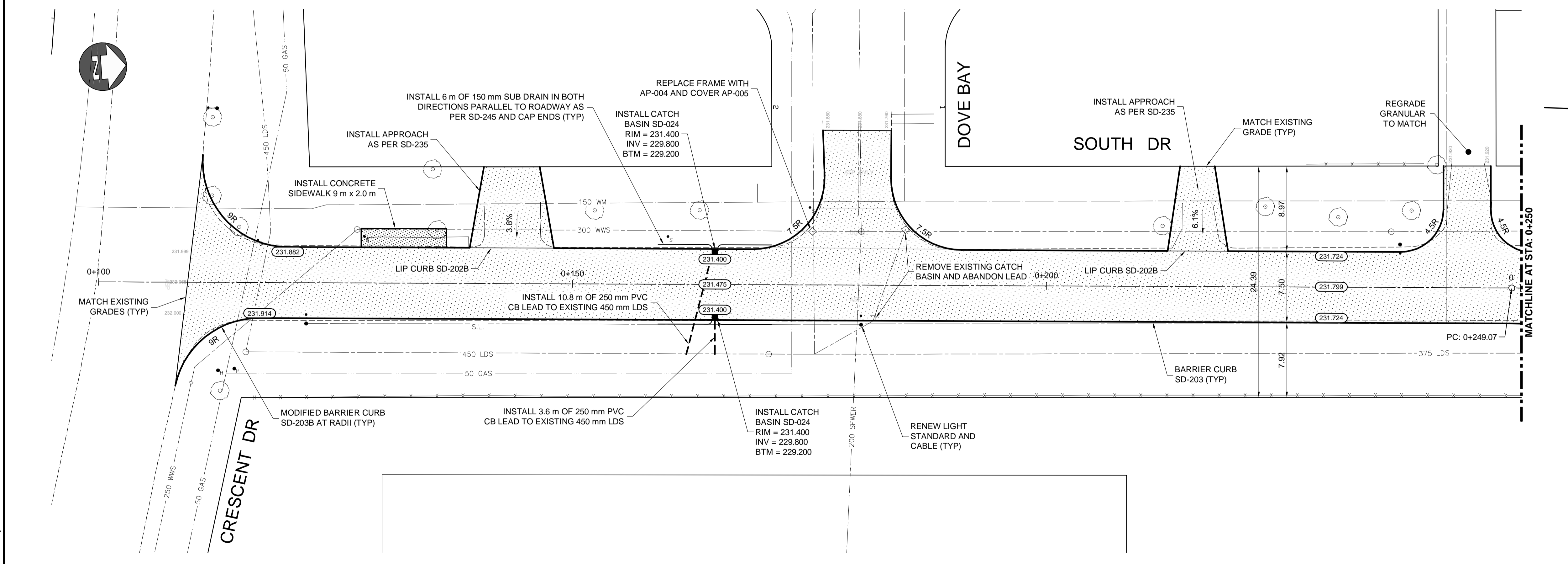


CONSTRUCTION NOTES:

1. ALL DIMENSIONS ARE TO BACK OF CURB.
2. ISOLATE MISCELLANEOUS ITEMS IN NEW CONCRETE WORKS AS PER SD-228C.
3. LEGAL PLAN AND UNDERGROUND INFORMATION FROM CITY OF WINNIPEG LBIS. CONTRACTOR TO VERIFY ALL UNDERGROUNDS IN THE FIELD.
4. CONTRACTOR TO TAKE PRECAUTIONARY STEPS TO AVOID DAMAGE FROM CONSTRUCTION ACTIVITIES TO TREES WITHIN THE LIMITS OF CONSTRUCTION.
5. LOCATION OF EXISTING SERVICES TO BE CONFIRMED IN THE FIELD BY THE CONTRACTOR.
6. CB LEADS TO BE INSTALLED AT MIN. 1.0% SLOPE OR AS DIRECTED BY CONTRACT ADMINISTRATOR.
7. LIMITS OF SIDEWALK RENEWAL TO BE FINALIZED IN THE FIELD BY THE CONTRACT ADMINISTRATOR.
8. LIMITS OF BOULEVARD GRADING TO BE FINALIZED IN THE FIELD BY THE CONTRACT ADMINISTRATOR.



METRIC

WHOLE NUMBERS INDICATE MILLIMETRES
DECIMALIZED NUMBERS INDICATE METRES

WARNING

IF POWER EQUIPMENT OR EXPLOSIVES ARE TO BE USED FOR EXCAVATION ON THIS PROJECT THE CONTRACTOR MUST:

1. NOTIFY THE GAS COMPANY OF THE PROPOSED LOCATION OF EXCAVATION.
2. TAKE PRECAUTION TO AVOID DAMAGE TO GAS COMPANY INSTALLATIONS SEE PROVINCIAL REGULATION 210/72 FOR DETAILS.
3. OBTAIN EXCAVATION PERMITS PRIOR TO CONSTRUCTION.



Certificate of Authorization
Dillon Consulting Limited (MB)
No. 1789 Date: 04/22/2014

G:\CAD\138775\Contract\Plan-Profile-South-Dr.dwg

EXISTING	LEGEND-PLAN	PROPOSED	EXISTING	LEGEND-PLAN	PROPOSED	EXISTING	LEGEND-PROFILE	PROPOSED
150 WM	WATERMAIN	150 WM	HYDRO	HYDRO	HYDRO	150 WM	WATERMAIN	150 WM
Hydrant	HYDRANT	Hydrant	M.T.S.	M.T.S.	M.T.S.	Hydrant	HYDRANT	Hydrant
Valve	VALVE	Valve	CONCRETE	M.T.S.	CONCRETE	Valve	VALVE	Valve
300 LDS	LAND DRAINAGE SEWER	300 LDS	ASPHALT	ASPHALT	ASPHALT	300 LDS	LAND DRAINAGE SEWER	300 LDS
250 WWS	WASTE WATER SEWER	250 WWS	PLANING	PLANING	PLANING	250 WWS	WASTE WATER SEWER	250 WWS
Manhole	MANHOLE	Manhole	SIDEWALK	SIDEWALK	SIDEWALK	Profile	PROFILE	Profile
Catch Basin	CATCH BASIN	Catch Basin	PAVING STONES	PAVING STONES	PAVING STONES	North/West Gutter	NORTH/WEST GUTTER	North/West Gutter
Curb Inlet	CURB INLET	Curb Inlet	PARTIAL DEPTH REPAIR	PARTIAL DEPTH REPAIR	PARTIAL DEPTH REPAIR	South/East Gutter	SOUTH/EAST GUTTER	South/East Gutter
Junctions	JUNCTIONS	Junctions	PROPERTY LINE	PROPERTY LINE	PROPERTY LINE	North/West Ditch	NORTH/WEST DITCH	North/West Ditch
Culvert	CULVERT	Culvert	DRAINAGE ARROW	DRAINAGE ARROW	DRAINAGE ARROW	South/East Ditch	SOUTH/EAST DITCH	South/East Ditch
100 GAS	GAS	100 GAS	CURB RAMP	CURB RAMP	CURB RAMP			

UNDERGROUND STRUCTURES		B.M. ELEV.
SUPV.	U/G STRUCTURES	DATE

NO.	REVISIONS	DATE	BY
2	ISSUED FOR TENDER	04/22/14	TJP
1	ISSUED FOR REVIEW	04/04/14	TJP

DESIGNED BY	AMC
DRAWN BY	TJH
CHECKED BY	ORIGINAL SIGNED BY TARAN J. PETERS
APPROVED BY	ORIGINAL SIGNED BY DAVID B. WIEBE
HOR. SCALE	1:250
VERTICAL	1:10
DATE	04/22/2014



ENGINEER'S SEAL
PROVINCE OF MANITOBA
REGISTERED PROFESSIONAL ENGINEER
T.J. PETERS
04/22/2014
Member 22309

THE CITY OF WINNIPEG
PUBLIC WORKS DEPARTMENT

2014 RESIDENTIAL STREET RENEWAL PROGRAM

PLAN-PROFILE - SOUTH DRIVE - CRESCENT DRIVE TO STA. 0+250

CITY DRAWING NUMBER: SHEET 06 OF 14
CONSULTANT DRAWING NUMBER

CONSULTANT PROJECT NUMBER: 13-8775