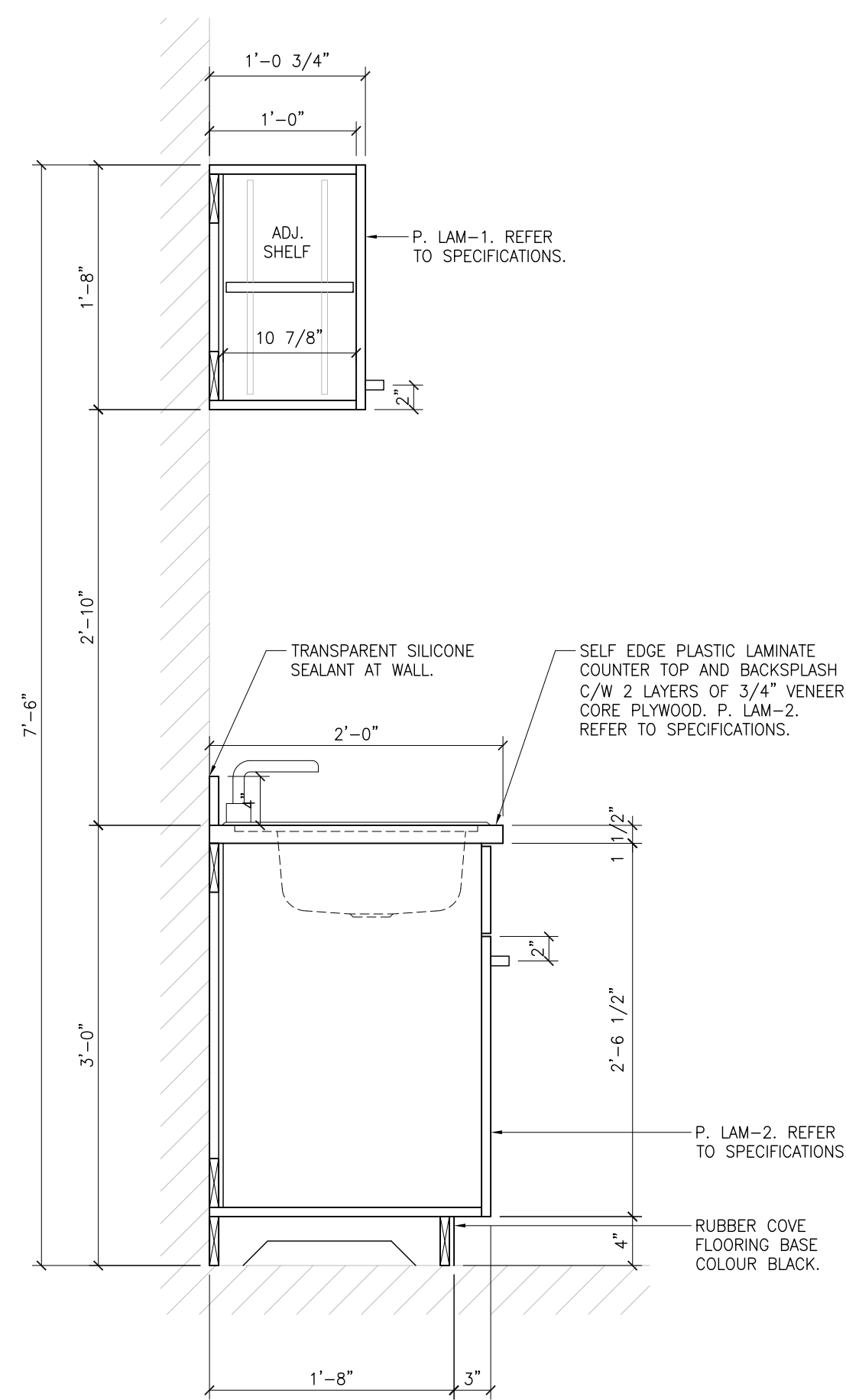


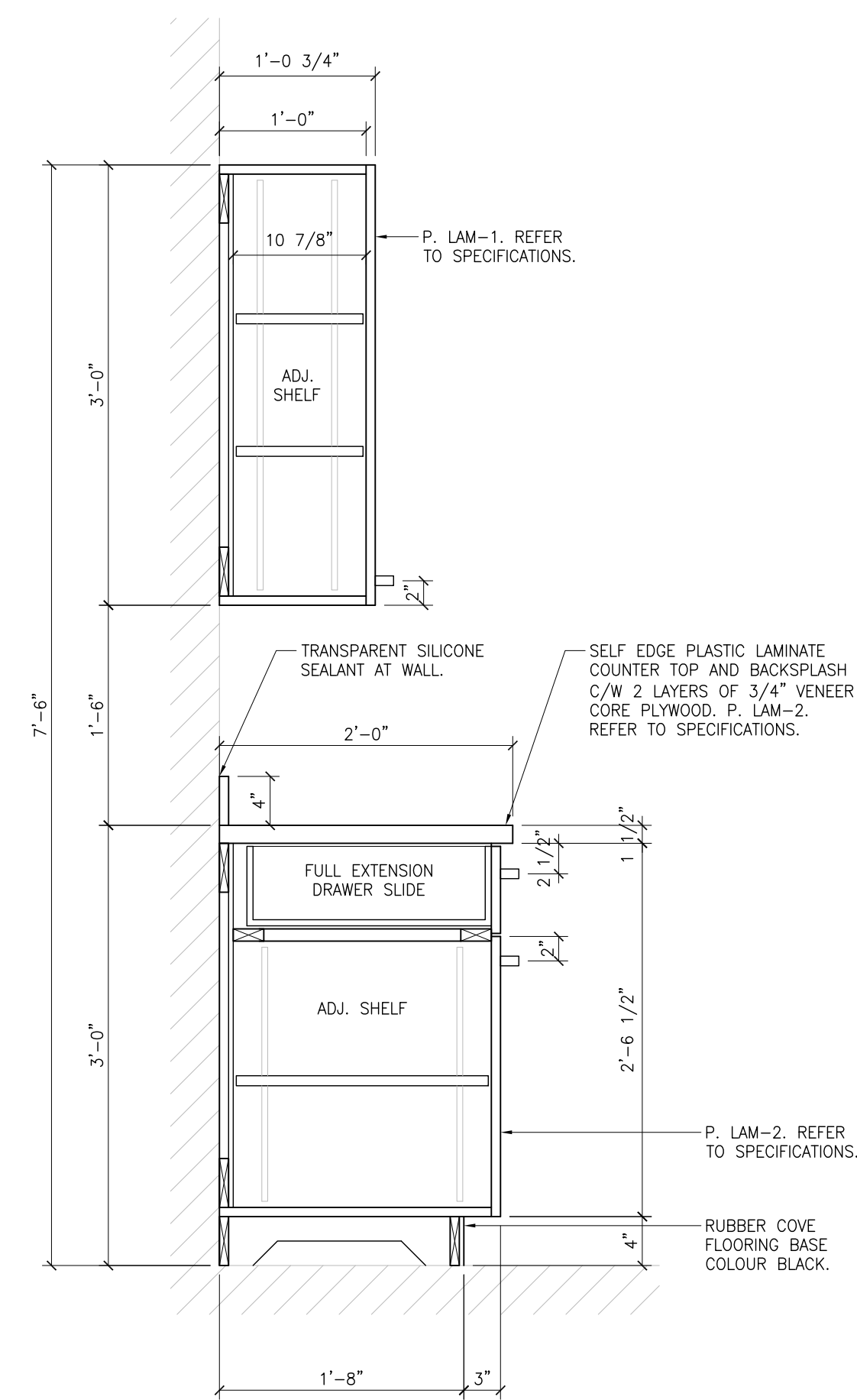
**1**  
B500 KITCHEN MILLWORK ELEVATION  
1" = 1' - 0"

- CONTRACTOR TO VISIT SITE TO CONFIRM ACTUAL DIMENSIONS PRIOR TO SUBMITTING SHOP DRAWINGS FOR REVIEW.
- REFER TO SPECIFICATIONS FOR HARDWARE.



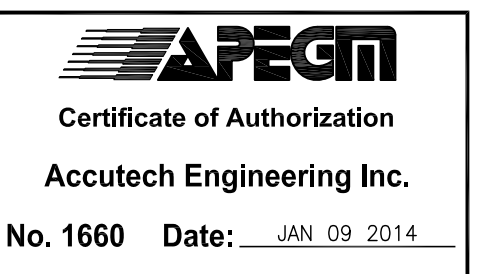
**2**  
B500 KITCHEN MILLWORK SECTION @ SINK  
1" = 1' - 0"

- CONTRACTOR TO VISIT SITE TO CONFIRM ACTUAL DIMENSIONS PRIOR TO SUBMITTING SHOP DRAWINGS FOR REVIEW.
- REFER TO SPECIFICATIONS FOR HARDWARE.



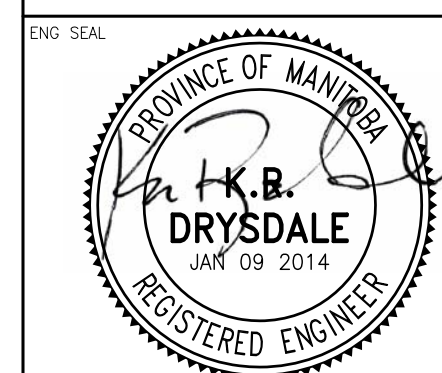
**3**  
B500 KITCHEN MILLWORK SECTION  
1" = 1' - 0"

- CONTRACTOR TO VISIT SITE TO CONFIRM ACTUAL DIMENSIONS PRIOR TO SUBMITTING SHOP DRAWINGS FOR REVIEW.
- REFER TO SPECIFICATIONS FOR HARDWARE.



7				
6				
5				
4				
3	RE-ISSUED FOR TENDER	VCV	KRD	JAN 09 2014
2	ISSUED FOR TENDER	VCV	KRD	JUN 18 2013
1	ISSUED FOR 100% CLIENT REVIEW	VCV	KRD	MAY 16 2013
0	ISSUED FOR CLIENT REVIEW	VCV	KRD	APR 26 2013
REV	DESCRIPTION	DWN	APP	REV DATE

**Accutech Engineering Inc.**  
Tomorrow's Technology Today  
605-287 Broadway, Winnipeg, Manitoba Canada R3C 0R9  
Phone 204.944.1555 Fax 204.944.1444  
www.accutech.ca



PROJECT  
**CITY OF WINNIPEG**  
**SIR JOHN FRANKLIN CC BASEMENT STRUCTURAL REPAIRS**

SHEET TITLE  
**MILLWORK DETAILS**  
BID OPPORTUNITY No. 32-2014

DRAWN BY <b>VCV</b>	CHECKED BY <b>DBR</b>	DATE <b>JAN 09 2014</b>	SHEET NO. <b>B500</b>
DESIGNED BY <b>KRD</b>	CHECKED BY <b>KRD</b>	SCALE <b>AS NOTED</b>	REVISION NO. <b>3</b>