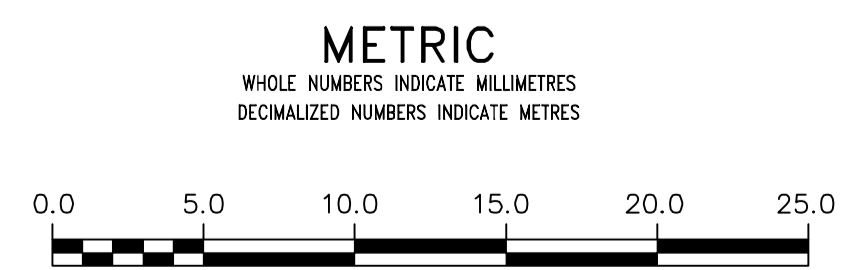
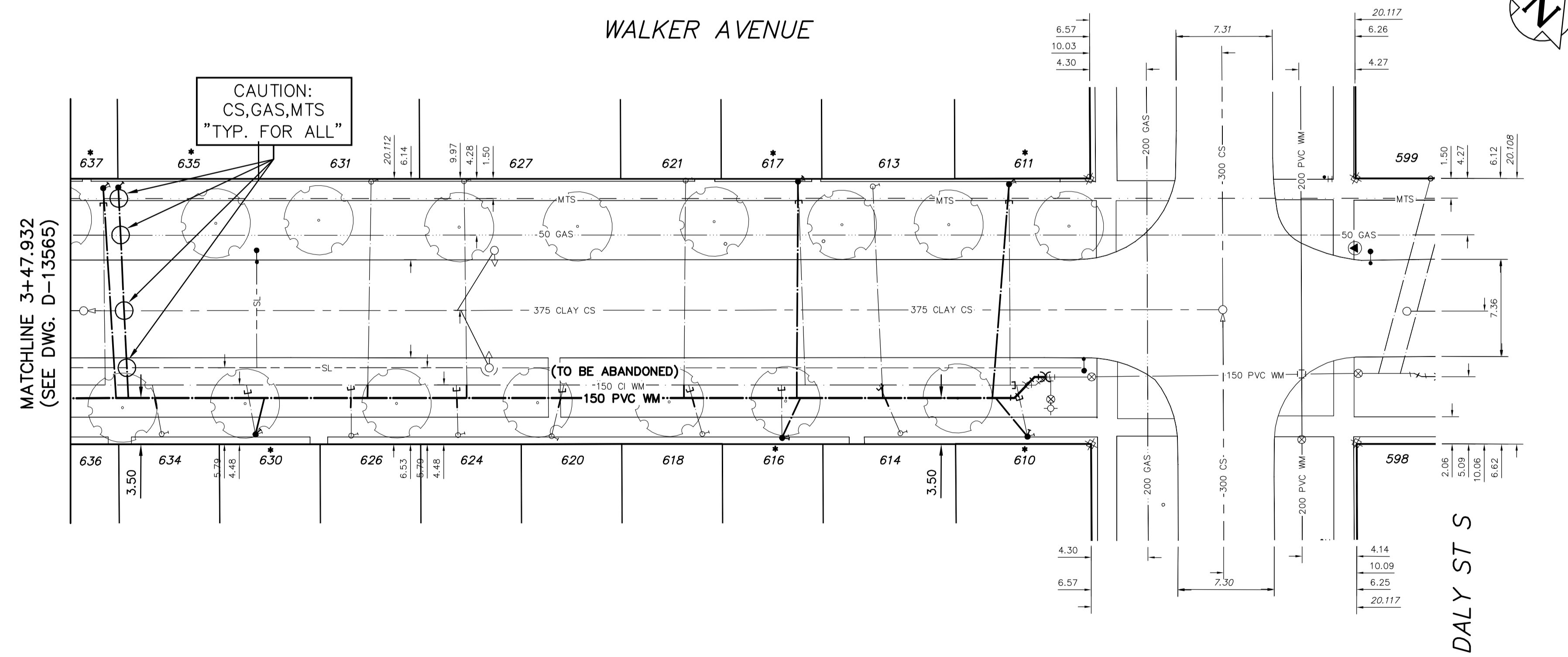


WATER SERVICE INFORMATION

ADDRESS	SIZE (mm) MATERIAL (STREET)	SIZE (mm) MATERIAL (PROP.)	SHORT & LONG MEASUREMENT	CORP. LOCATION	REMARKS
* 610 WALKER AVE RESIDENTIAL	12 CU	12 LEAD	4.4 E WHL	0.6 W OF S/C	RENEW TO R
* 611 WALKER AVE RESIDENTIAL	12 LEAD	12 LEAD	5.1 WWL DALY ST	OPP OF S/C	RENEW TO R
* 613 WALKER AVE RESIDENTIAL	20 CU	12 LEAD	16.72 WWL DALY ST	0.9 E OF S/C	RECONNECT SERV.
* 614 WALKER AVE RESIDENTIAL	20 CU	12 LEAD	3.7 WEHL	1.4 W OF S/C	RECONNECT SERV.
* 616 WALKER AVE RESIDENTIAL	20 CU	20 CU	14.7 WWL DALY ST	0.3 E OF S/C	RENEW TO R
* 617 WALKER AVE RESIDENTIAL	12 LEAD	12 LEAD	23.9 WWL DALY ST	0.8 E OF S/C	RENEW TO R
* 618 WALKER AVE RESIDENTIAL	20 CU	20 CU	22.3 WWL DALY ST	0.8 W OF S/C	RECONNECT SERV.
* 620 WALKER AVE RESIDENTIAL	12 CU	12 CU	0.6 WEHL	1.2 E OF S/C	RECONNECT SERV.
* 621 WALKER AVE RESIDENTIAL	12 CU	12 CU	29.6 WWL DALY ST	1.2 E OF S/C	RECONNECT SERV.
* 624 WALKER AVE RESIDENTIAL	20 CU	12 LEAD	41.1 WWL DALY ST	1.2 E OF S/C	RECONNECT SERV.
* 626 WALKER AVE RESIDENTIAL	20 CU	12 LEAD	30.9 WWL DALY ST	OPP OF S/C	RECONNECT SERV.
* 627 WALKER AVE RESIDENTIAL	20 CU	12 LEAD	3.4 WEHL	1.2 E OF S/C	RECONNECT SERV.
* 628 WALKER AVE RESIDENTIAL	20 CU	12 LEAD	48.2 WWL DALY ST	0.4 E OF S/C	RECONNECT SERV.
* 630 WALKER AVE RESIDENTIAL	20 CU	12 LEAD	56.3 WWL DALY ST	0.4 E OF S/C	RECONNECT SERV.
* 631 WALKER AVE RESIDENTIAL	20 CU	12 LEAD	0.9 E WHL	0.4 W OF S/C	RENEW TO R
* 633 WALKER AVE RESIDENTIAL	16 LEAD	12 LEAD	47.4 WWL DALY ST	0.4 E OF S/C	RECONNECT SERV.
* 634 WALKER AVE RESIDENTIAL	12 CU	12 CU	2.1 WEHL	0.5 E OF S/C	RECONNECT SERV.
* 635 WALKER AVE RESIDENTIAL	16 LEAD	12 LEAD	70.7 WWL DALY ST	0.4 E OF S/C	RENEW TO R WYED WITH 37
* 637 WALKER AVE RESIDENTIAL	16 LEAD	12 LEAD	75 WWL DALY ST	0.4 E OF S/C	RENEW TO R WYED WITH 37

* SERVICES TO BE RENEWED TO R. ALL OTHERS TO BE RECONNECTED

NOTE: CHAINAGES SHOWN ARE ALONG S. R. OF WALKER STREET



WARNING
 IF POWER EQUIPMENT OR EXPLOSIVES ARE TO BE USED FOR EXCAVATION ON THIS PROJECT THE CONTRACTOR MUST:
 1) NOTIFY THE GAS COMPANY OF THE PROPOSED LOCATION OF EXCAVATION.
 2) TAKE PRECAUTION TO AVOID DAMAGE TO GAS COMPANY INSTALLATIONS.
 SEE PROVINCIAL REGULATION 210/72 FOR DETAILS

LOCATION APPROVED UNDERGROUND STRUCTURES
 SUPV. U/G STRUCTURES COMMITTEE DATE
 NOTE:
 LOCATION OF UNDERGROUND STRUCTURES AS SHOWN ARE BASED ON THE BEST INFORMATION AVAILABLE BUT NO GUARANTEE IS GIVEN THAT ALL EXISTING UTILITIES ARE SHOWN OR THAT THE GIVEN LOCATIONS ARE EXACT. CONFIRMATION OF EXISTENCE AND EXACT LOCATION OF ALL SERVICES MUST BE OBTAINED FROM THE INDIVIDUAL UTILITIES BEFORE PROCEEDING WITH CONSTRUCTION.

B.M. ELEV.			
CONSTRUCTION COMPLETION DATE: YYYY MM DD			
DESIGNED BY	TS		
CHECKED BY	SC		
DRAWN BY	RS/MA		
APPROVED BY	KZ		
SCALE:			
HORIZONTAL	1:250		
VERTICAL	1:50		
RELEASED FOR CONSTRUCTION			
DATE	2014 04 10		
DATE			
NO.	REVISIONS	DATE	BY

ENGINEER'S SEAL
ORIGINAL SIGNED BY S.R.J. COURNOYER 14-04-10
CONSULTANT DRAWING NUMBER

THE CITY OF WINNIPEG
 WATER AND WASTE DEPARTMENT
 ENGINEERING DIVISION

2014 WATER RENEWALS

WALKER AVENUE
 77 W OF DALY STREET SOUTH TO DALY STREET SOUTH

SHEET 13 OF 15
 CITY DRAWING NUMBER D-13566