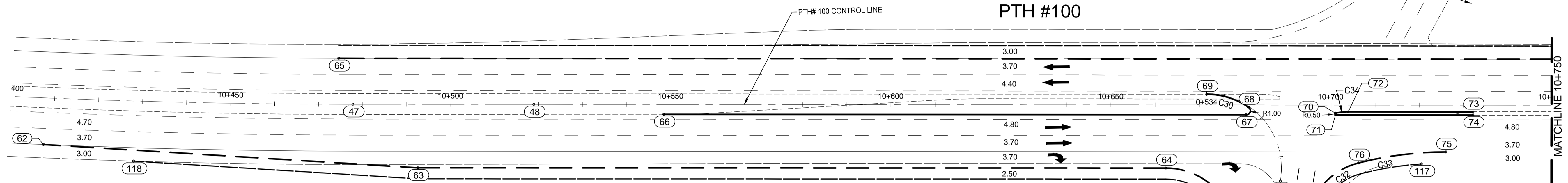
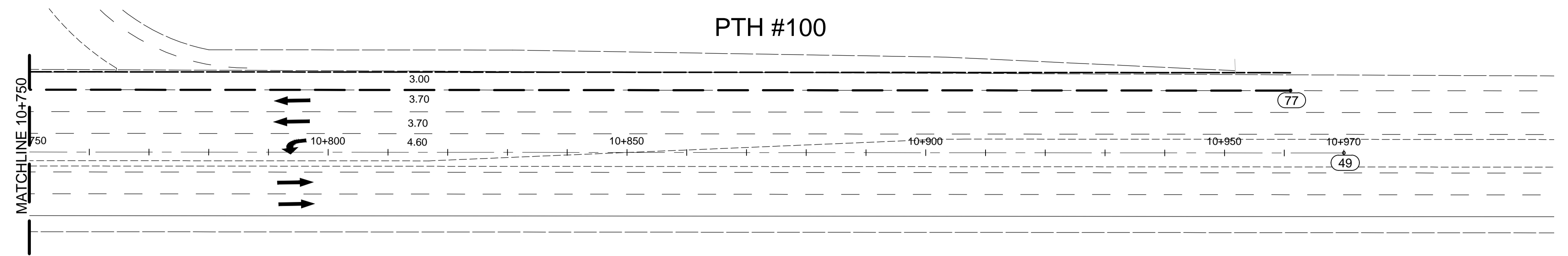


PTH 100 Lane / Back of Curb Points			
Point #	Northing	Easting	Station / Offset
65	5514668.633	631290.905	PT-STA 10+474.477 / 10.445L
66	5514694.403	631361.288	PT-STA 10+548.371 / 2.426R
67	5514760.230	631476.030	TC-STA 10+680.653 / 2.426R
68	5514762.007	631475.660	PCC-STA 10+681.217 / 0.500R
69	5514759.832	631465.981	PC-STA 10+671.739 / 2.429L
70	5514770.673	631493.468	PCC-STA 10+700.957 / 1.847R
71	5514770.350	631493.700	CT-STA 10+701.016 / 2.241R
72	5514772.384	631495.859	CT-STA 10+703.901 / 1.551R
73	5514786.483	631520.436	pt-sta 10+732.235 / 1.551r
74	5514785.885	631520.779	PT-STA 10+732.235 / 2.241R
75	5514775.533	631519.637	PC-STA 10+726.093 / 10.502R
76	5514763.490	631503.669	PCC-STA 10+706.250 / 13.002R
77	5514910.736	631712.912	PT-STA 10+961.019 / 10.445L
117	5514770.422	631516.154	PT-STA 10+726.093 / 13.502R

Curve Table					
Curve #	Length	Radius	Delta	Tangent	Chord Length
C30	10.071	16.800	34°20'50"	5.192	9.921
C33	20.052	80.000	14°21'40"	10.079	20.000
C34	2.944	14.700	11°28'30"	1.477	2.939



PTH 100 EB Decel Lane Points			
Point #	Northing	Easting	Station / Offset
62	5514618.237	631242.518	PT-STA 10+407.853 / 10.598R
63	5514656.000	631318.865	PT-STA 10+492.448 / 10.598R
64	5514740.662	631466.289	TC-STA 10+662.466 / 14.352R
118	5514625.155	631262.143	PT-STA 10+407.853 / 13.448R

PTH 100 Control Points			
Point #	Northing	Easting	Station / Offset
* 45	5514430.062	630461.700	PT-STA 9+600.000 / 0.0
* 46	5514430.613	630480.946	TC-STA 9+619.253 / 0.0
47	5514661.180	631298.904	CT-STA 10+477.727 / 0.0
48	5514681.629	631334.548	PT-STA 10+518.819 / 0.0
49	5514906.134	631725.880	PT-STA 10+969.977 / 0.0

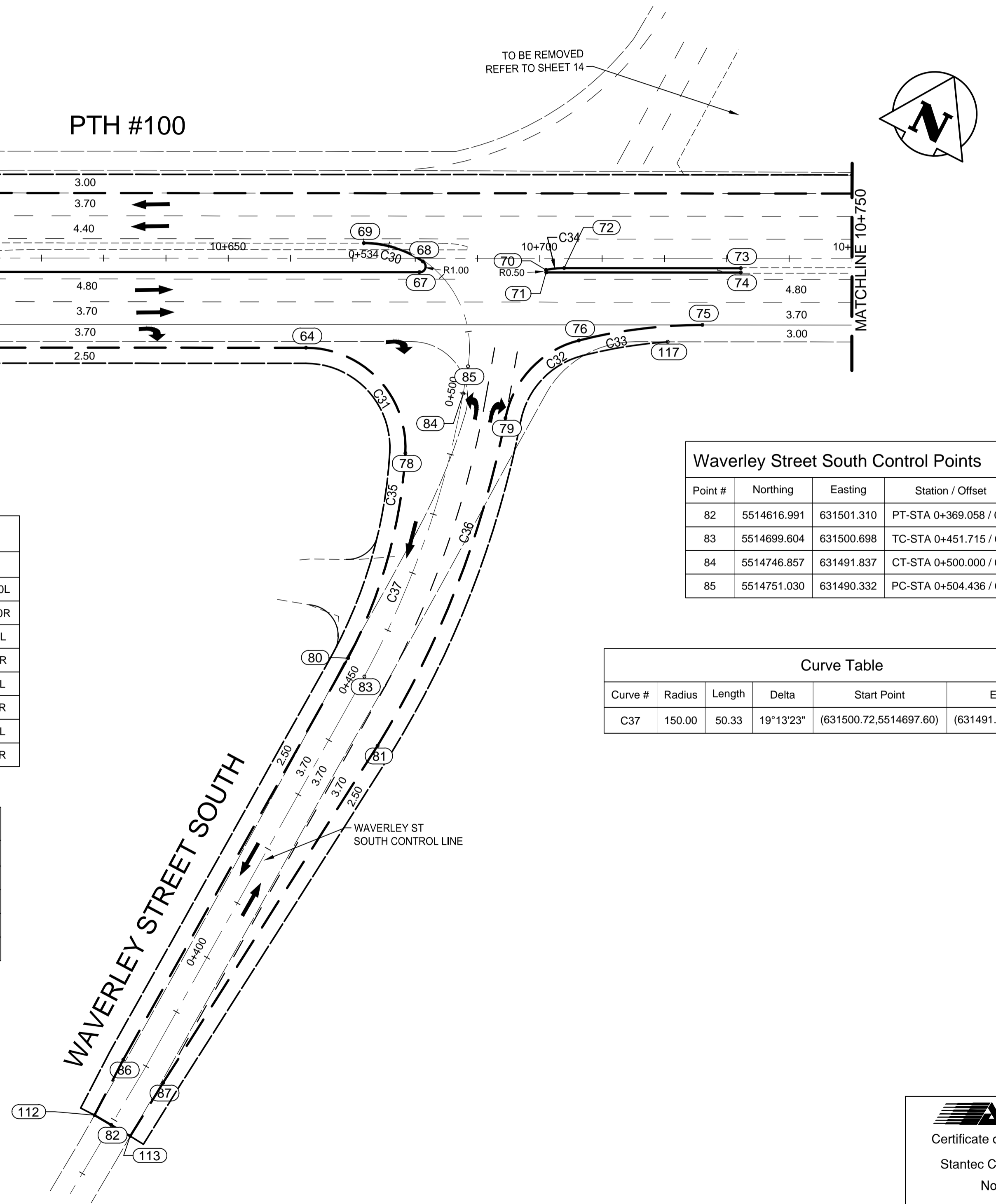
*NOTES: SHOWN ON SHEET 3

Waverley Street South Misc. Points			
Point #	Northing	Easting	Station / Offset
78	5514733.938	631488.562	PCC-STA 0+488.405 / 7.040L
79	5514746.846	631499.684	PCC-STA 0+497.451 / 7.400R
80	5514700.847	631496.961	TC-STA 0+453.082 / 3.700L
81	5514691.027	631508.066	TC-STA 0+442.961 / 7.156R
86	5514627.020	631497.784	PT-STA 0+379.266 / 3.700L
87	5514627.000	631505.184	PT-STA 0+379.266 / 3.700R
112	5514617.016	631498.218	PT-STA 0+369.058 / 3.103L
113	5514616.963	631504.865	PT-STA 0+369.058 / 3.544R

Curve Table					
Curve #	Length	Radius	Delta	Tangent	Chord Length
C31	26.049	16.000	93°16'50"	16.943	23.266
C32	18.058	16.000	64°39'50"	10.127	17.115
C35	34.406	80.000	24°38'30"	17.473	34.141
C36	56.752	157.400	20°39'30"	28.687	56.445

Waverley Street South Control Points			
Point #	Northing	Easting	Station / Offset
82	5514616.991	631501.310	PT-STA 0+369.058 / 0.0
83	5514699.604	631500.698	TC-STA 0+451.715 / 0.0
84	5514746.857	631491.837	CT-STA 0+500.000 / 0.0
85	5514751.030	631490.332	PC-STA 0+504.436 / 0.0

Curve Table					
Curve #	Radius	Length	Delta	Start Point	End Point
C37	150.00	50.33	19°13'23"	(631500.72,5514697.60)	(631491.82,5514746.90)



METRIC
WHOLE NUMBERS INDICATE MILLIMETRES
DECIMALIZED NUMBERS INDICATE METRES

UNDERGROUND STRUCTURES SUPPLY, U/G STRUCTURES COMMITTEE DATE NOTE: LOCATION OF UNDERGROUND STRUCTURES AS SHOWN ARE BASED ON THE BEST INFORMATION AVAILABLE. BUT NO GUARANTEE IS GIVEN THAT ALL EXISTING UTILITIES ARE SHOWN OR THAT THE GIVEN LOCATIONS ARE EXACT. CONFIRMATION OF EXISTENCE AND EXACT LOCATION OF ALL SERVICES MUST BE OBTAINED FROM THE INDIVIDUAL UTILITIES BEFORE PROCEEDING WITH CONSTRUCTION.	B.M. ELEV.	DESIGNED BY S.B.C. DRAWN BY T.G. / P.A. CHECKED BY S.B.C. / R.K.H. APPROVED BY S.B.C.	DESIGN TEAM 	ENGINEER'S SEAL CONSULTANT PROJECT NUMBER 113705751	 THE CITY OF WINNIPEG PUBLIC WORKS DEPARTMENT WWARP PART 3 - CONTRACT 4 KENASTON / WAVERLEY KENASTON BOULEVARD & WAVERLEY TO PERIMETER HORIZONTAL CONTROL GEOMETRY PTH #100 - WAVERLEY SOUTH	CITY DRAWING NUMBER P-3355-4 SHEET 4 OF 20 CONSULTANT DRAWING NUMBER C-103
	0 ISSUED FOR TENDER 14/04/17 S.B.C. NO. REVISIONS DATE BY DATE 2014/04/17	HOR. SCALE 1:500 VERTICAL N/A RELEASED FOR CONSTRUCTION DATE		RELEASED FOR CONSTRUCTION DATE	CONSULTANT PROJECT NUMBER 113705751	KENASTON BOULEVARD & WAVERLEY TO PERIMETER HORIZONTAL CONTROL GEOMETRY PTH #100 - WAVERLEY SOUTH

V:\1137\active\113705751\drawing\404_working\sheet_files_perimeter\05751-c-106-xxx.dwg