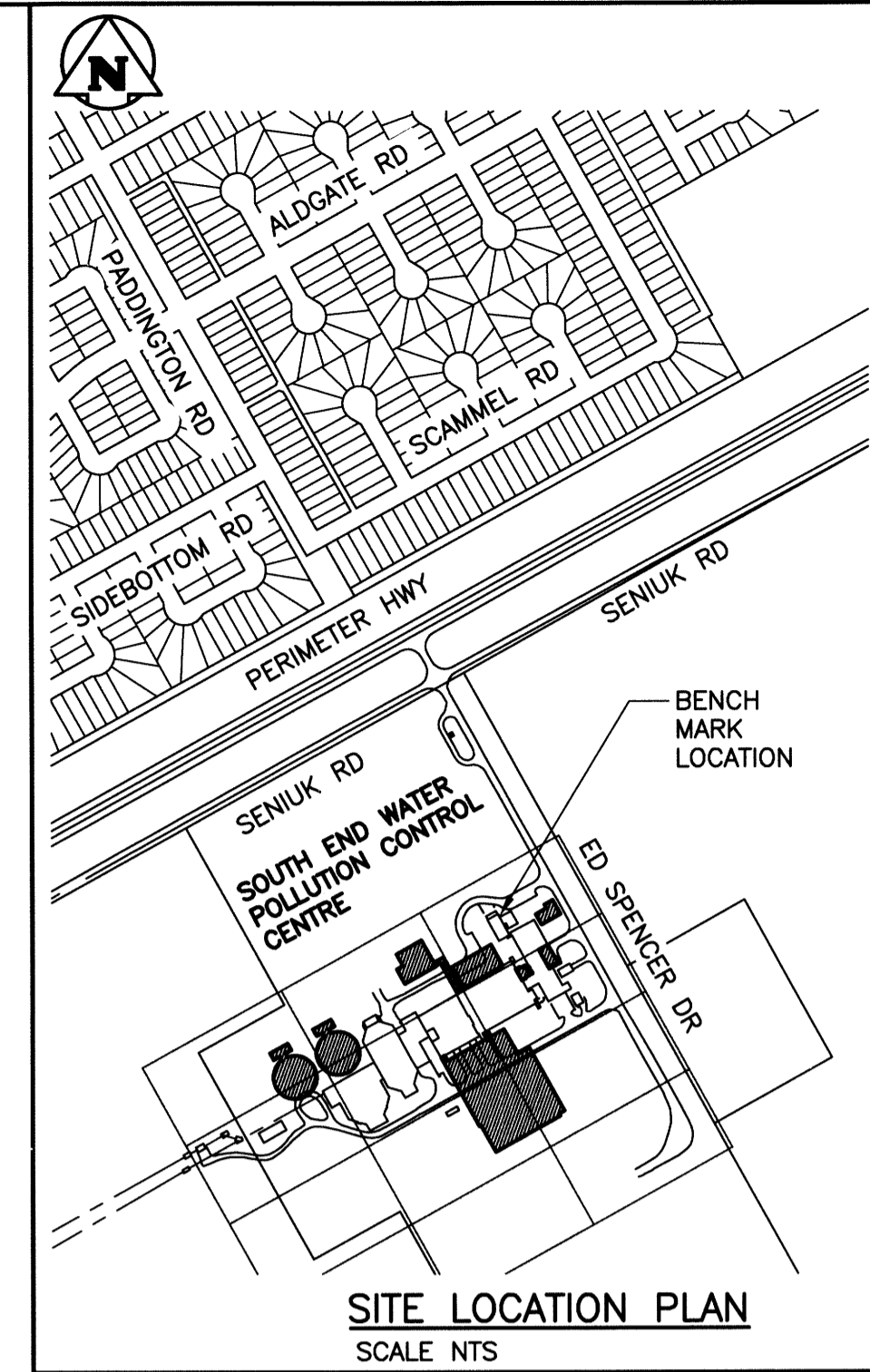


FROBISHER RD

PERIMETER 100 HWY

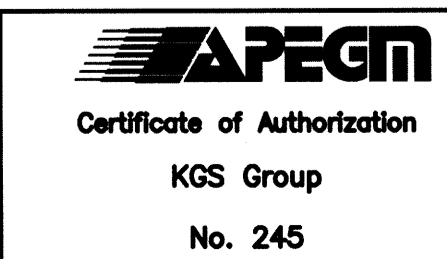
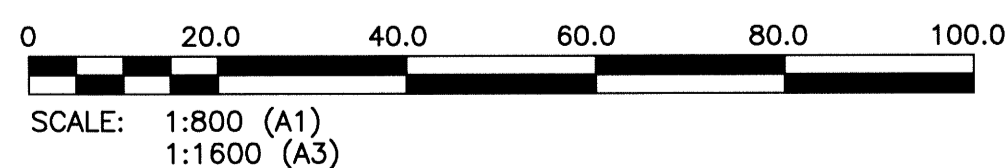
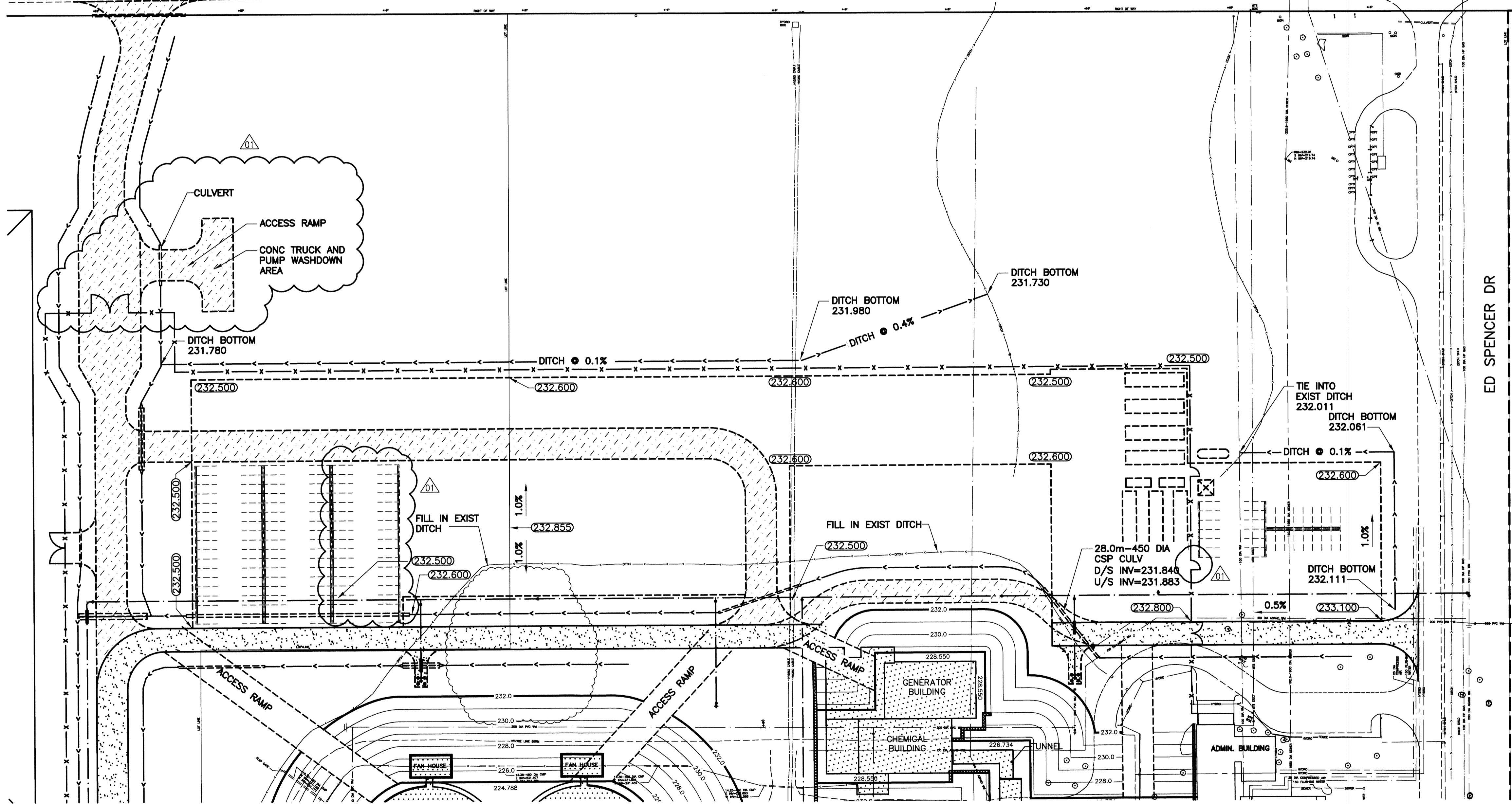
SENIUK RD

ED SPENCER DR



LEGEND	EXISTING	NEW
SEWER	—	—
SEWER MH	○	●
SEWER PLUG	—	—
SEWER CB	□	□
SEWER STRUCT	□	□
WM	—	—
WM VALVE	⊗	⊗
WM HYDRANT	⊕	⊕
GAS	—	—
HYDRO	—	—
HYDRO POLE	●HP	●HP
HYDRO STR	□	□
HYDRO POLE	●H	●H
STREET LIGHT	⊙	⊙
HYDRO TRANSFORMER	⊠	⊠
BOLLARD	⊗	⊗
TREE	⊙	⊙
SHRUBS/BUSH	⊙	⊙
CULVERT	—	—
DITCH	—	—
ROAD	—	—
FENCE	—	—
LEASED LAND UNDER CULTIVATION	—	—
EXIST STRUCTURE TO BE MODIFIED	▨	▨
NEW STRUCTURE	▨	▨
NEW ROAD	▨	▨
REVCLOUD	⊙	⊙

NOTE:
1. ALL WORK SHALL BE PERFORMED IN ACCORDANCE WITH THE CITY OF WINNIPEG STANDARD CONSTRUCTION SPECIFICATIONS



B.M. ELEV.	BRASS PLATE LOCATED IN GRADE BEAM OF ADMINSTRATON BUILDING 234.059		
NO.	REVISIONS	DATE	DESIGN CHECK
01	ISSUED FOR ADDENDUM NO.1	07/2014	EMS
00	ISSUED FOR TENDER	06/2014	EMS

CH2MHILL

SNC-LAVALIN GROUP

DESIGNED BY: EMS	CHECKED BY: BJM
DRAWN BY: DMW	APPROVED BY: RJH
SCALE: AS NOTED	RELEASED FOR CONSTRUCTION BY:
DATE: 2014/06/27	DATE:

CONSULTANT NO.: 13-0338-002

ENGINEER'S SEAL

2014/07/17

THE CITY OF WINNIPEG
WATER AND WASTE DEPARTMENT

**SOUTH END WATER POLLUTION CONTROL CENTRE
SEMPCC UPGRADE/EXPANSION PROJECT**
CIVIL
SITE PLAN NORTH

CITY DRAWING NUMBER	SHEET	REV.	SIZE
1-0102-CGAD-A002	001	01	A1