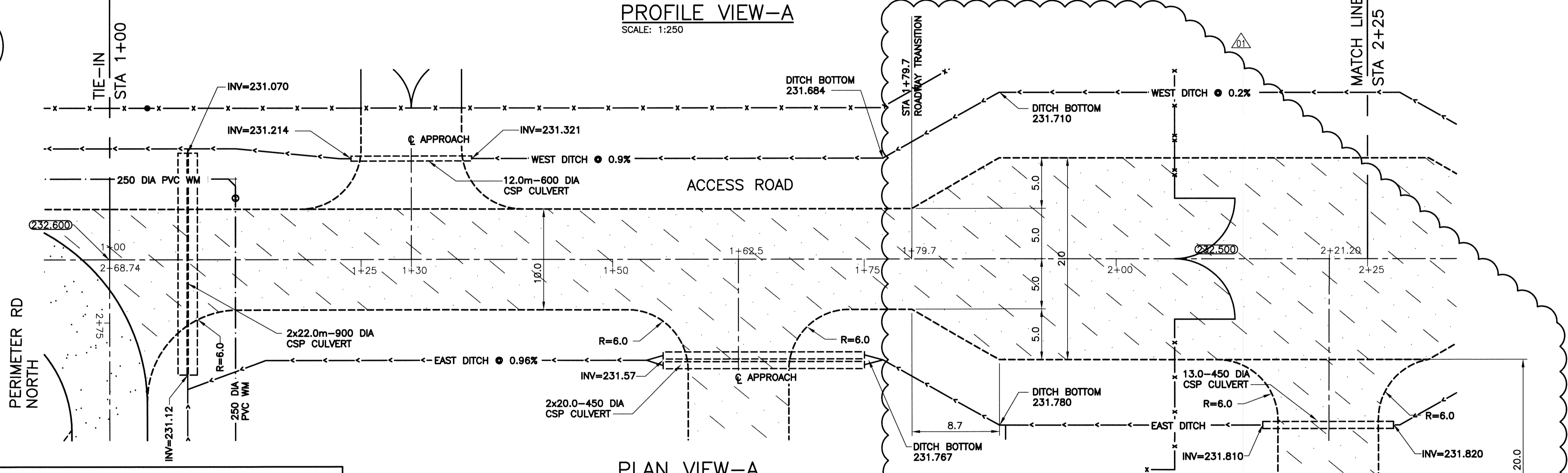


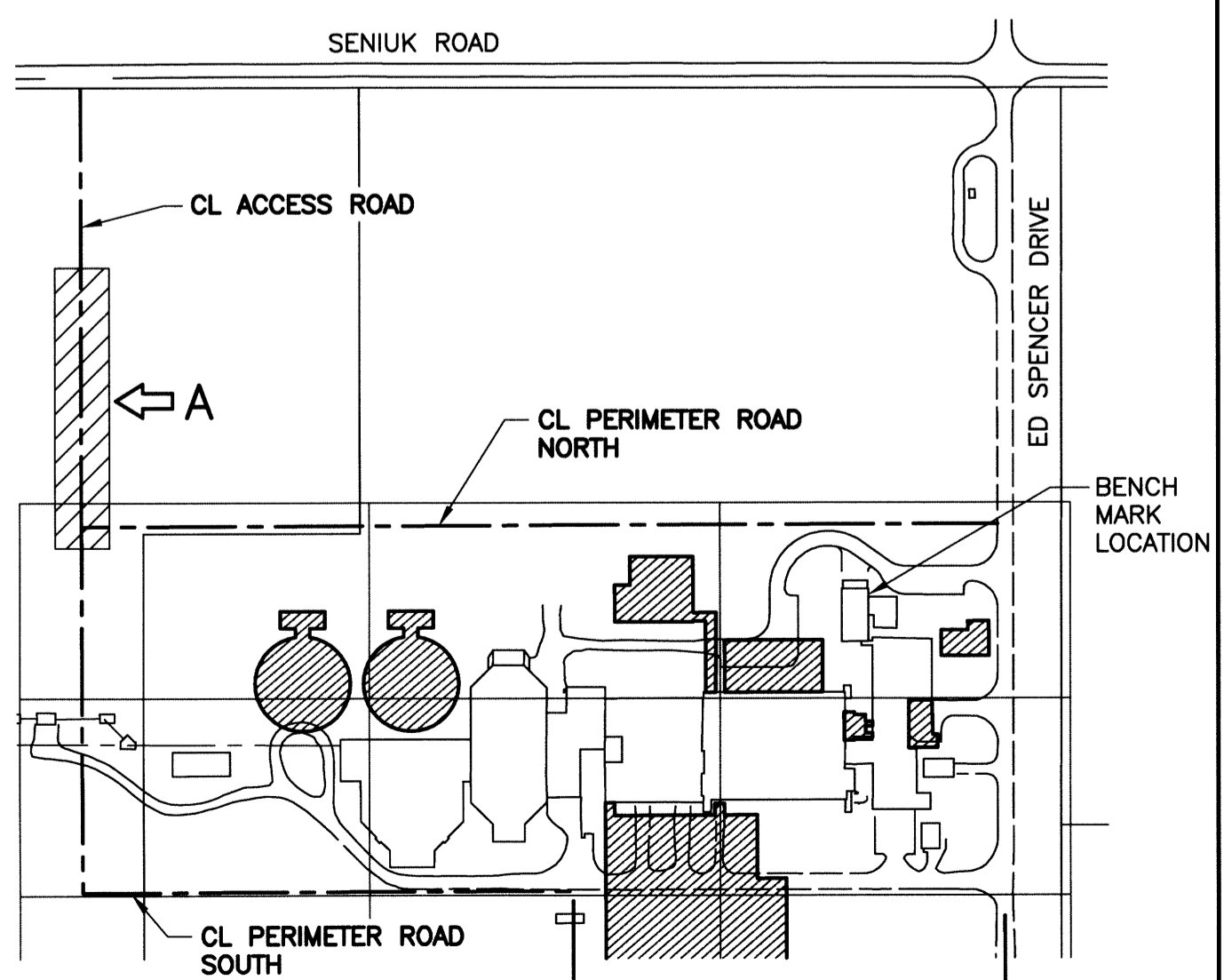
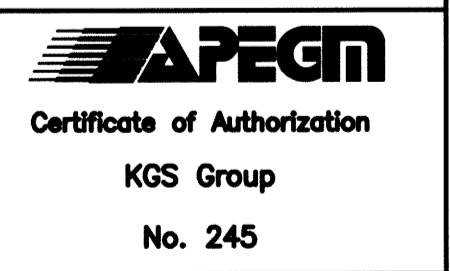
PROFILE VIEW-A  
SCALE: 1:250



PLAN VIEW-A  
SCALE: 1:250

ACCESS ROAD LAYOUT CO-ORDINATES			
STATION	EASTING (X)	NORTHING (Y)	REMARKS
1+00	636637.008	5517482.347	CL ROAD INTERSECTION
1+30	636622.352	5517508.523	CL WEST APPROACH
1+62.5	636606.475	5517536.881	CL EAST APPROACH
1+79.7	636598.072	5517551.889	ROAD TRANSITION
2+21.2	636577.804	5517588.088	CL EAST APPROACH

NOTE:  
1. ALL WORK SHALL BE PERFORMED IN ACCORDANCE WITH THE CITY OF WINNIPEG STANDARD CONSTRUCTION SPECIFICATIONS



LOCATION PLAN

LEGEND							
ITEM	EXISTING	NEW	ABANDONED	ITEM	EXISTING	NEW	ABANDONED
WM	○	●	○	SIGN	□	□	□
WM VALVE	⊗	⊕	⊗	BOLLARD	○	○	○
WM HYDRANT	⊕	⊕	⊕	TREE	⊙	⊙	⊙
SEWER MH	○	○	○	BUSH	⊙	⊙	⊙
SEWER CB	□	□	□	ELEVATION	233.240	233.450	
MTS	○	○	○	CULVERT	=====	=====	
MTS MH	○	○	○	ROAD	-----	-----	
HYDRO	○	○	○	CONSTRUCTION	-----	-----	
HYDRO LS	○	○	○	ACCESS ROAD	-----	-----	
HYDRO POLE	●	●	●				
GAS	○	○	○				
DITCH	—	—	—				
FENCE	x	x	x				

B.M. ELEV.	BRASS PLATE LOCATED IN GRADE BEAM OF ADMINSTRATOR BUILDING	
	234.059	
NO.	REVISIONS	DATE
01	ISSUED FOR ADDENDUM NO.1	07/2014
00	ISSUED FOR TENDER	06/2014

**CH2MHILL**

SNC-LAVALIN

DESIGNED BY: EMS  
CHECKED BY: BJM

DRAWN BY: DMW  
APPROVED BY: RJH

SCALE: AS NOTED  
RELEASED FOR CONSTRUCTION

DATE: 2014/06/27

CONSULTANT NO.: 13-0338-002

ENGINEER'S SEAL

**KGS GROUP**

B.J. MIKOLAYENKO  
Member  
24688  
REGISTERED PROFESSIONAL ENGINEER

July 17/2014

**THE CITY OF WINNIPEG**  
WATER AND WASTE DEPARTMENT

SOUTH END WATER POLLUTION CONTROL CENTRE  
SEMPCC UPGRADE/EXPANSION PROJECT  
CIVIL  
CONSTRUCTION ACCESS ROAD NORTH  
STA 1+00 TO STA 2+25

CITY DRAWING NUMBER: 1-0102-CRSW-A001  
SHEET: 001  
REV: 01  
SIZE: A1