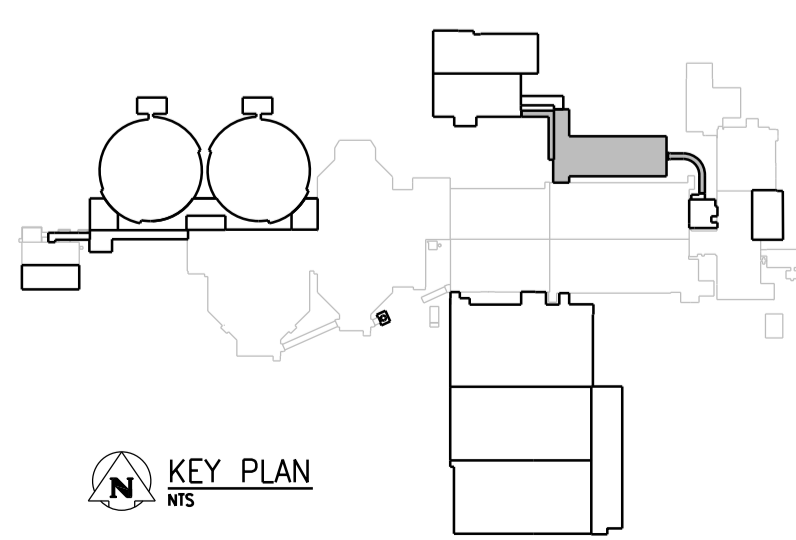


PRIMARY CLARIFIER TANK 1

**PILING PLAN**  
1:100

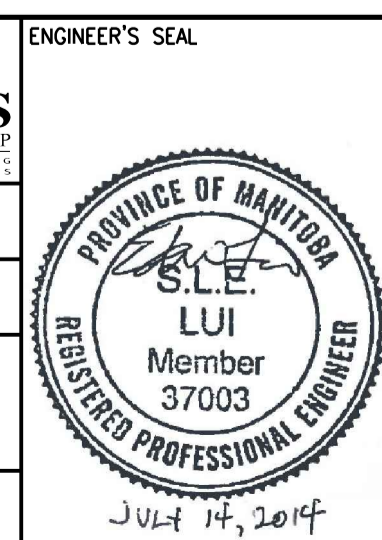


- NOTES:**
1. REFER TO DWG 1-0102-SGAD-A001 FOR GENERAL NOTES.
  2. REFER TO DWG 1-0102-SGAD-A002 FOR OVERALL SITE PLAN AND SEQUENCING.
  3. PILE DIAMETER (D) = 400mm
  4. PILES CUT-OFF ELEVATION = 227.109 UNLESS NOTED OTHERWISE.
  5. ESTIMATED PILE REFUSAL EL 212.000



00	ISSUED FOR ADDENDUM NO. 1	07/2014	G.O. B.W.
NO.	REVISIONS	DATE	DESIGN CHECK

<b>CH2MHILL</b>	
SNC-LAVALIN	KCS GROUP OF COMPANIES
DESIGNED BY: E. LUI	CHECKED BY:
DRAWN BY: G. OMORI	APPROVED BY:
SCALE: 1:100	ISSUED FOR CONSTRUCTION BY:
DATE:	DATE:
CONSULTANT NO.: 474248	



**THE CITY OF WINNIPEG**  
Winnipeg WATER AND WASTE DEPARTMENT

SOUTH END WATER POLLUTION CONTROL CENTRE  
SEWPPC UPGRADING/EXPANSION PROJECT  
STRUCTURAL  
HIGH RATE CLARIFICATION BUILDING  
PILING PLAN

CITY DRAWING NUMBER: 1-0102-SFDW-K001  
SHEET: 001  
REV: 00  
SIZE: A1