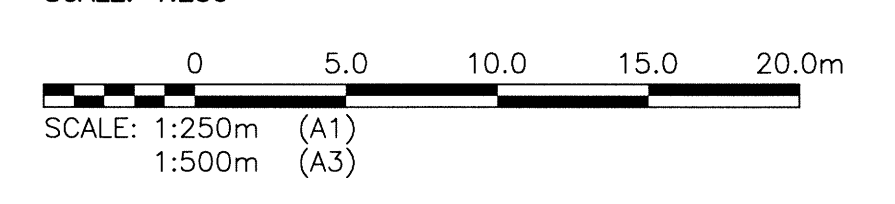
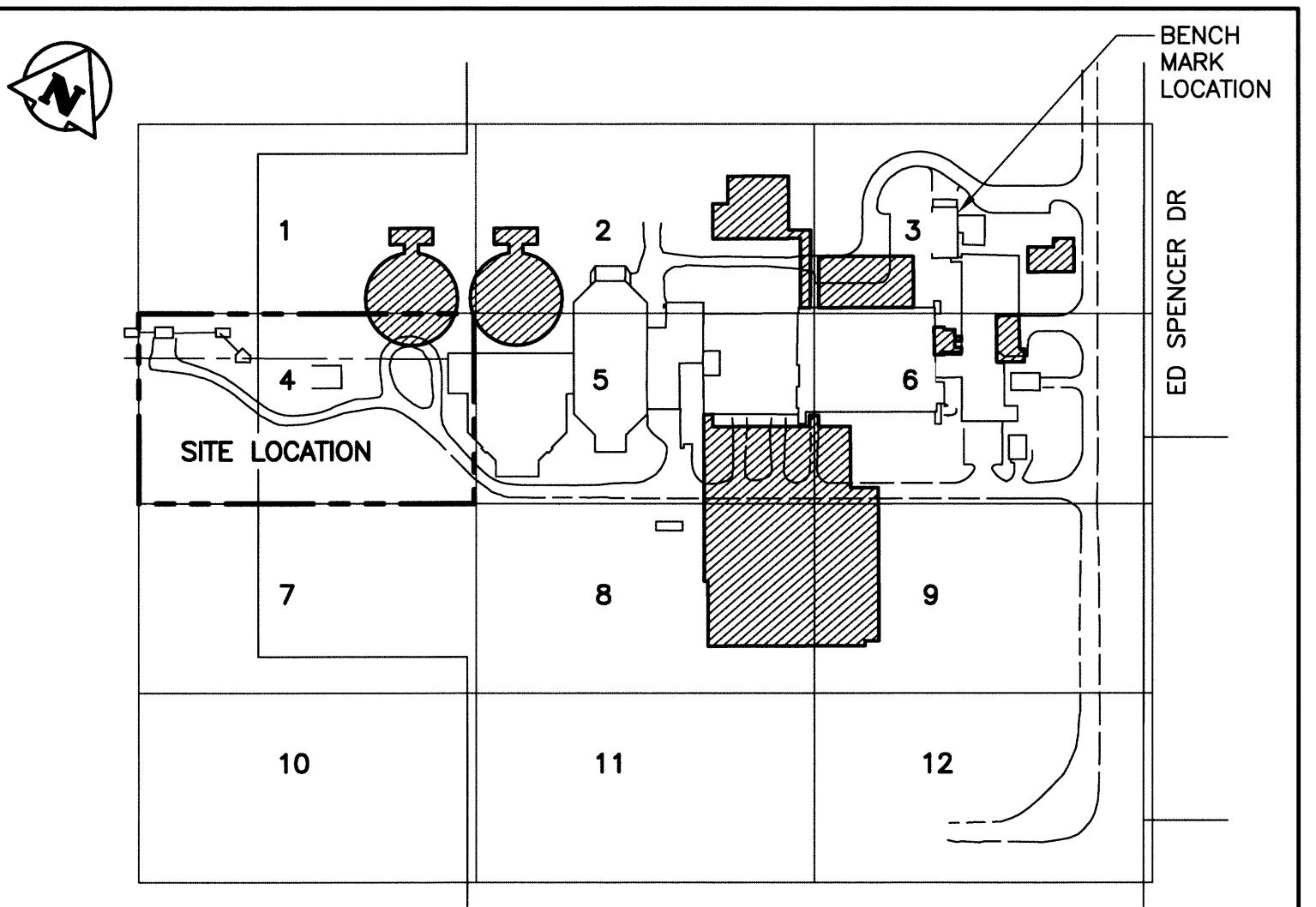


LEGEND	EXISTING	NEW
SEWER	○	●
SEWER MH	○	●
SEWER PLUG	○	●
SEWER CB	□	■
SEWER STRUCT	□	■
WM	—	—
WM VALVE	⊗	⊙
WM HYDRANT	⊕	⊖
GAS	---	---
HYDRO	---	---
HYDRO POLE	●HP	●HP
HYDRO STR	□	□
HYDRO POLE	●H	●H
STREET LIGHT	•	•
HYDRO TRANSFORMER	⊗	⊗
BOLLARD	⊙	⊙
TREE	⊙	⊙
SHRUBS/BUSH	⊙	⊙
CULVERT	---	---
DITCH	---	---
ROAD	---	---
FENCE	---	---
LEASED LAND UNDER CULTIVATION	---	---
EXIST STRUCTURE TO BE MODIFIED	▨	▨
NEW STRUCTURE	▨	▨
NEW ROAD	---	---
CONSTRUCTION ACCESS RAMP	---	---
HYDRO DUCT	---	---
SHORING AND LAGGING	---	---

PLAN - SITE LOCATION 4



NOTE:
 1. ALL WORK SHALL BE PERFORMED IN ACCORDANCE WITH THE CITY OF WINNIPEG STANDARD CONSTRUCTION SPECIFICATIONS



LOCATION PLAN

APGM
 Certificate of Authorization
 KGS Group
 No. 245

B.M. BRASS PLATE LOCATED IN GRADE BEAM OF ADMINSTRATOR BUILDING ELEV. 234.059	CH2MHILL.		ENGINEER'S SEAL		
DESIGNED BY: EMS	CHECKED BY: BJM				
DRAWN BY: DMW	APPROVED BY: RJH				
SCALE: AS NOTED	RELEASED FOR CONSTRUCTION BY: _____				
DATE: 2014/06/27	DATE: _____				
NO. REVISIONS	DATE	DESIGN CHECK	CONSULTANT NO.: 13-0338-002		

THE CITY OF WINNIPEG
 WATER AND WASTE DEPARTMENT

SOUTH END WATER POLLUTION CONTROL CENTRE
 SEWPPC UPGRADE/EXPANSION PROJECT
 CIVIL
 SITE REMOVALS - LOCATION 4

CITY DRAWING NUMBER	SHEET	REV.	SIZE
4-0102-CGAD-A001	004	01	A1