

LEGEND	EXISTING	NEW
SEWER	○	●
SEWER MH	○	●
SEWER PLUG	—	—
SEWER CB	□	□
SEWER STRUCT	□	□
WM	○	●
WM VALVE	⊗	⊗
WM HYDRANT	⊕	⊕
GAS	—	—
HYDRO	—	—
HYDRO POLE	●HP	●HP
HYDRO STR	□	□
HYDRO POLE	●H	●H
STREET LIGHT	●	●
HYDRO TRANSFORMER	⊗	⊗
BOLLARD	⊙	⊙
TREE	○	○
SHRUBS/BUSH	○	○
CULVERT	—	—
DITCH	—	—
ROAD	—	—
FENCE	—	—
LEASED LAND UNDER CULTIVATION	—	—
EXIST STRUCTURE TO BE MODIFIED	▨	▨
NEW STRUCTURE	▨	▨
NEW ROAD	▨	▨
CONSTRUCTION ROAD	▨	▨

NOTE:
1. ALL WORK SHALL BE PERFORMED IN ACCORDANCE WITH THE CITY OF WINNIPEG STANDARD CONSTRUCTION SPECIFICATIONS

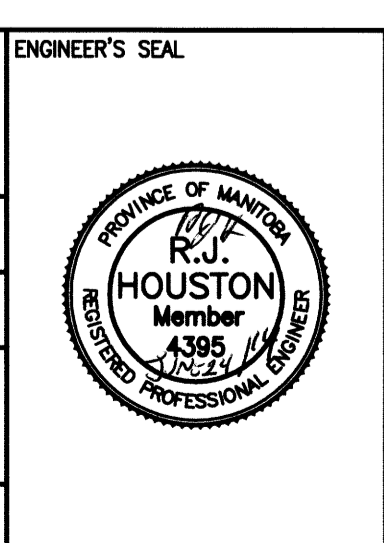


B.M. BRASS PLATE LOCATED IN GRADE BEAM OF ADMINSTRATON BUILDING ELEV. 234.059			
00	ISSUED FOR TENDER	06/2014	BJM / RJH
NO.	REVISIONS	DATE	DESIGN/CHECK

CH2MHILL.
SNC-LAVALIN
DESIGNED BY: EMS
DRAWN BY: DMW
SCALE: AS NOTED
DATE: 2014/06/27

KGS GROUP
CHECKED BY: BJM
APPROVED BY: RJH
RELEASED FOR CONSTRUCTION BY:
DATE:

CONSULTANT NO.: 13-0338-002



THE CITY OF WINNIPEG
WATER AND WASTE DEPARTMENT

SOUTH END WATER POLLUTION CONTROL CENTRE
SEWPPC UPGRADE/EXPANSION PROJECT
CIVIL

OVERALL SITE EXCAVATION AND STOCKPILE LOCATION PLAN

CITY DRAWING NUMBER	SHEET	REV.	SIZE
1-0102-CGAD-A003	001	00	A1