

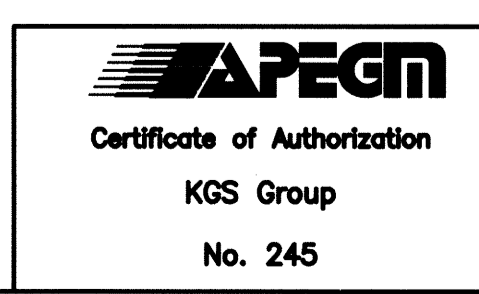
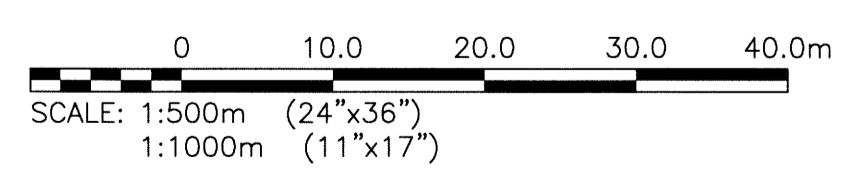
LEGEND	EXISTING	NEW
SEWER MH	○	●
SEWER PLUG	—	—
SEWER CB	□	□
SEWER STRUCT	□	□
WM	—	—
WM VALVE	⊗	⊗
WM HYDRANT	⊕	⊕
GAS	—	—
HYDRO	—	—
HYDRO POLE	●HP	●HP
HYDRO STR	□	□
HYDRO POLE	●H	●H
STREET LIGHT	—	—
HYDRO TRANSFORMER	⊗	⊗
BOLLARD	⊙	⊙
TREE	⊙	⊙
SHRUBS/BUSH	⊙	⊙
CULVERT	—	—
DITCH	—	—
ROAD	—	—
FENCE	—	—
LEASED LAND UNDER CULTIVATION	—	—
EXIST. STRUCTURE TO BE MODIFIED	▨	▨
NEW STRUCTURE	▨	▨
NEW ROAD	▨	▨
SHORING AND LAGGING	▨	▨

**NOTE:**  
1. ALL WORK SHALL BE PERFORMED IN ACCORDANCE WITH THE CITY OF WINNIPEG STANDARD CONSTRUCTION SPECIFICATIONS

**NOTES:**

- CONTRACTOR TO HIRE PENG TO DESIGN ALL REQUIRED SHORING FOR EXCAVATIONS.
- CONTRACTOR IS RESPONSIBLE FOR MAINTAINING AND DEWATERING ALL EXCAVATIONS.
- ALLOW ADDITIONAL 200mm DEPTH AT BOTTOM OF EXCAVATION FOR VOID FORM

ALL EXISTING UTILITIES, CULVERTS, TREES AND SHRUBS TO BE REMOVE AS PER DEMOLITION DRAWINGS



B.M. BRASS PLATE LOCATED IN GRADE BEAM OF ADMINISTRATION BUILDING ELEV. 234.059	
DESIGNED BY: SNC-LAWALIN	CHECKED BY: BJM
DRAWN BY: EMS	APPROVED BY: RJH
SCALE: AS NOTED	RELEASED FOR CONSTRUCTION BY: DATE:
DATE: 2014/06/27	DATE:
CONSULTANT NO.: 13-0338-002	

**CH2MHILL.**

DESIGNED BY: SNC-LAWALIN

CHECKED BY: BJM

DRAWN BY: EMS

APPROVED BY: RJH

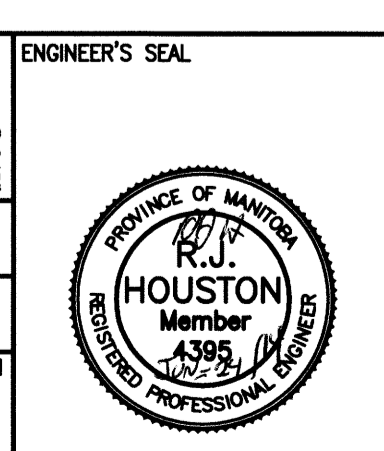
SCALE: AS NOTED

RELEASED FOR CONSTRUCTION BY: DATE:

DATE: 2014/06/27

DATE:

CONSULTANT NO.: 13-0338-002



**THE CITY OF WINNIPEG**  
WATER AND WASTE DEPARTMENT

SOUTH END WATER POLLUTION CONTROL CENTRE  
SEWPPC UPGRADE/EXPANSION PROJECT  
CIVIL

SITE EXCAVATION PLAN  
CLARIFIERS AREA

CITY DRAWING NUMBER	SHEET	REV.	SIZE
1-0102-CGAD-A003	004	00	A1