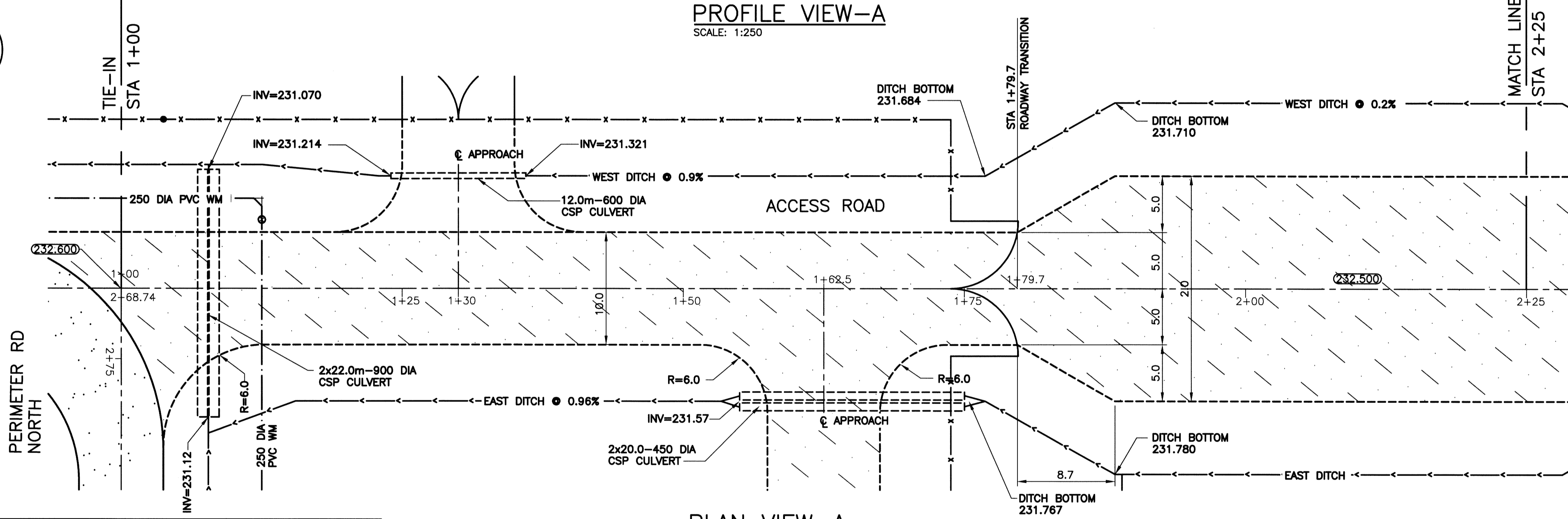
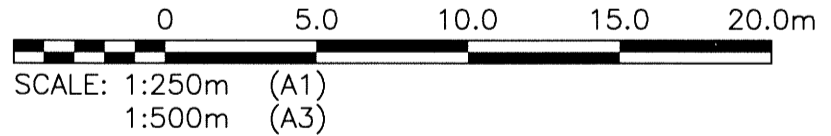


PROFILE VIEW-A
SCALE: 1:250

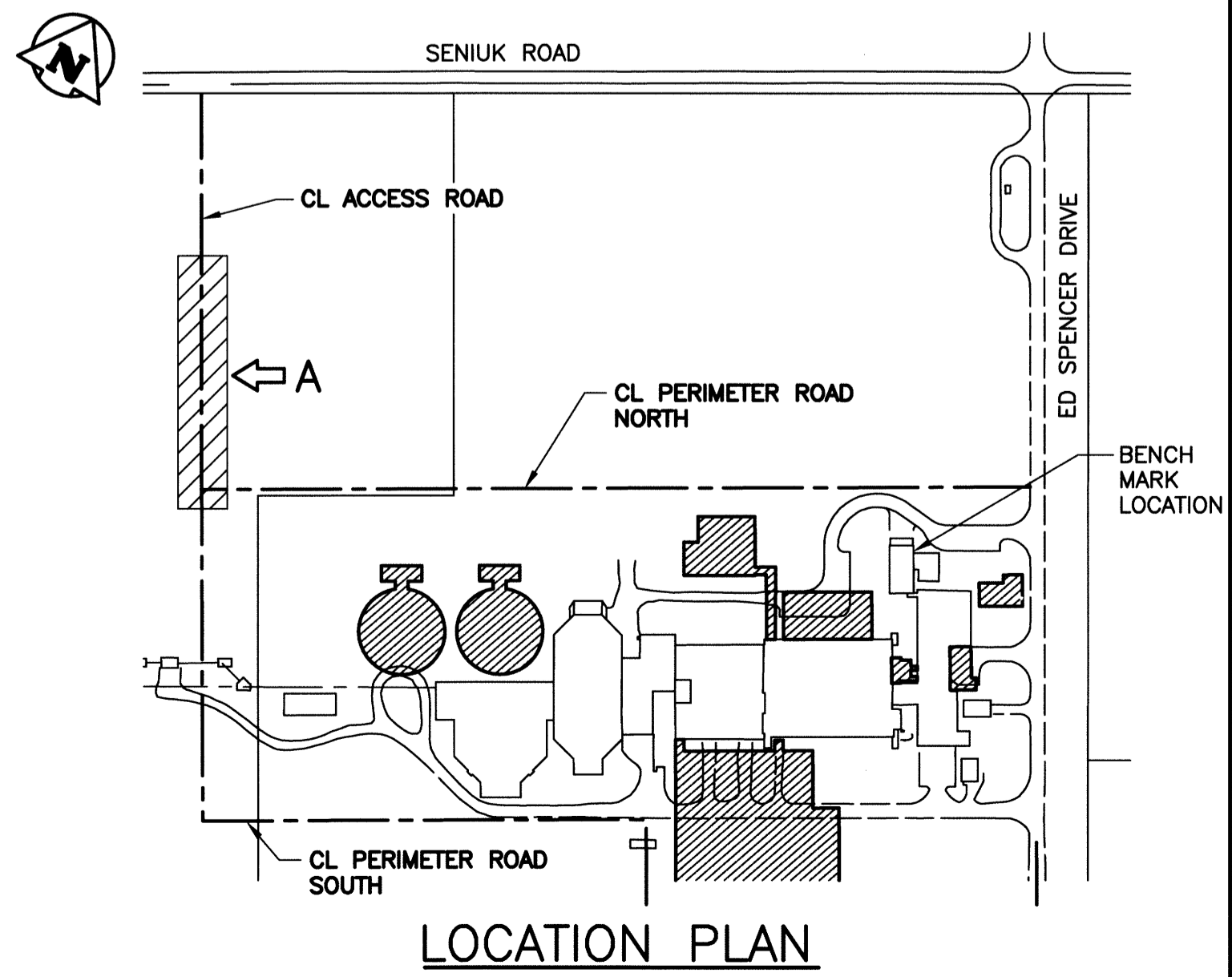


PLAN VIEW-A
SCALE: 1:250



ACCESS ROAD LAYOUT CO-ORDINATES			
STATION	EASTING (X)	NORTHING (Y)	REMARKS
1+00	636637.008	5517482.347	CL ROAD INTERSECTION
1+30	636622.352	5517508.523	CL WEST APPROACH
1+62.5	636606.475	5517536.881	CL EAST APPROACH
1+79.7	636598.072	5517551.889	ROAD TRANSITION

NOTE:
1. ALL WORK SHALL BE PERFORMED IN ACCORDANCE WITH THE CITY OF WINNIPEG STANDARD CONSTRUCTION SPECIFICATIONS



LOCATION PLAN

LEGEND			
ITEM	EXISTING	NEW	ABANDONED
WM VALVE	⊙	⊙	
WM HYDRANT	⊕	⊕	
SEWER MH	⊙	⊙	
SEWER CB	□	■	□
MTS	○	●	
MTS MH	○	●	
HYDRO	—	—	
HYDRO LS	—	—	
HYDRO POLE	—	—	
GAS	—	—	
DITCH	—	—	
FENCE	—	—	
SIGN BOLLARD	⊙	⊙	
TREE	⊙	⊙	
BUSH	⊙	⊙	
ELEVATION	233.240	(233.450)	
CULVERT	====	====	
ROAD	----	----	
CONSTRUCTION ACCESS ROAD	----	----	

B.M.	BRASS PLATE LOCATED IN GRADE BEAM OF ADMINISTRATION BUILDING		
ELEV.	234.059		
NO.	00	ISSUED FOR TENDER	06/2014
REVISIONS			

CH2MHILL.

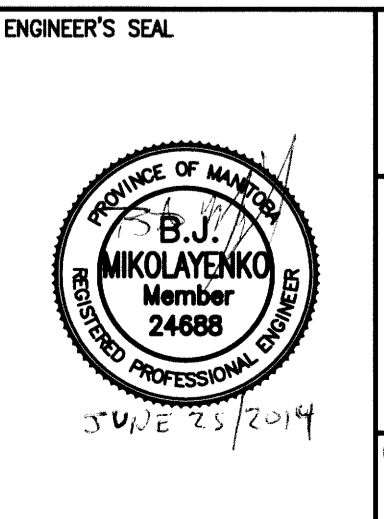
DESIGNED BY: EMS
CHECKED BY: BJM

DRAWN BY: DMW
APPROVED BY: RJH

SCALE: AS NOTED
RELEASED FOR CONSTRUCTION BY:

DATE: 2014/06/27
DATE:

CONSULTANT NO.: 13-0338-002



THE CITY OF WINNIPEG
WATER AND WASTE DEPARTMENT

SOUTH END WATER POLLUTION CONTROL CENTRE
SEWPPC UPGRADE/EXPANSION PROJECT
CIVIL

CONSTRUCTION ACCESS ROAD NORTH
STA 1+00 TO STA 2+25

CITY DRAWING NUMBER	SHEET	REV.	SIZE
1-0102-CRSW-A001	001	00	A1