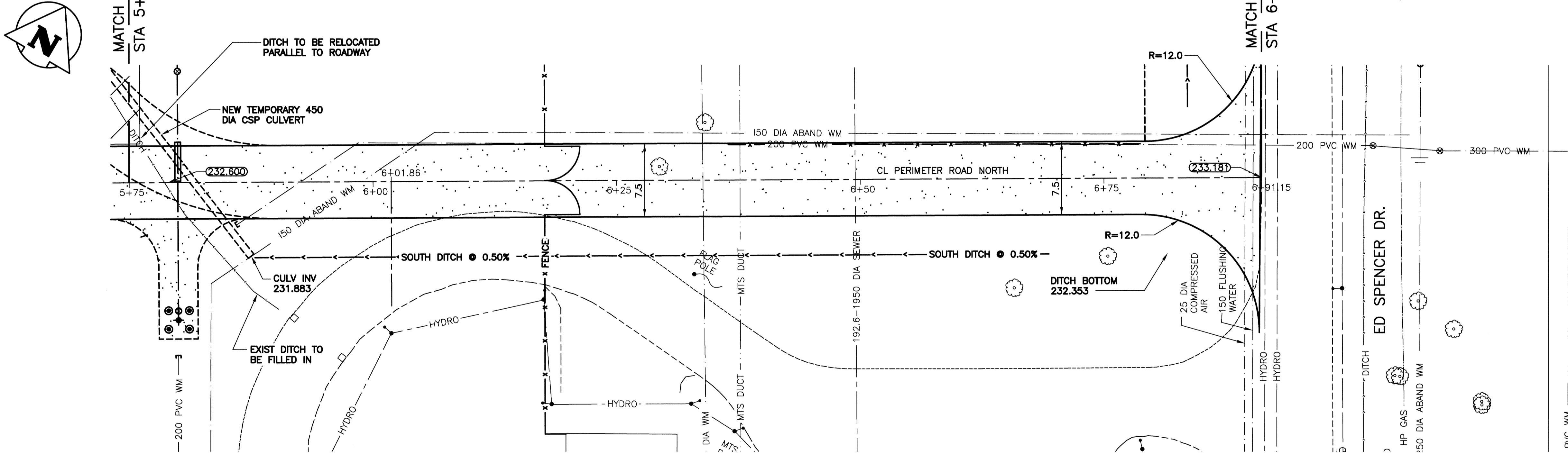
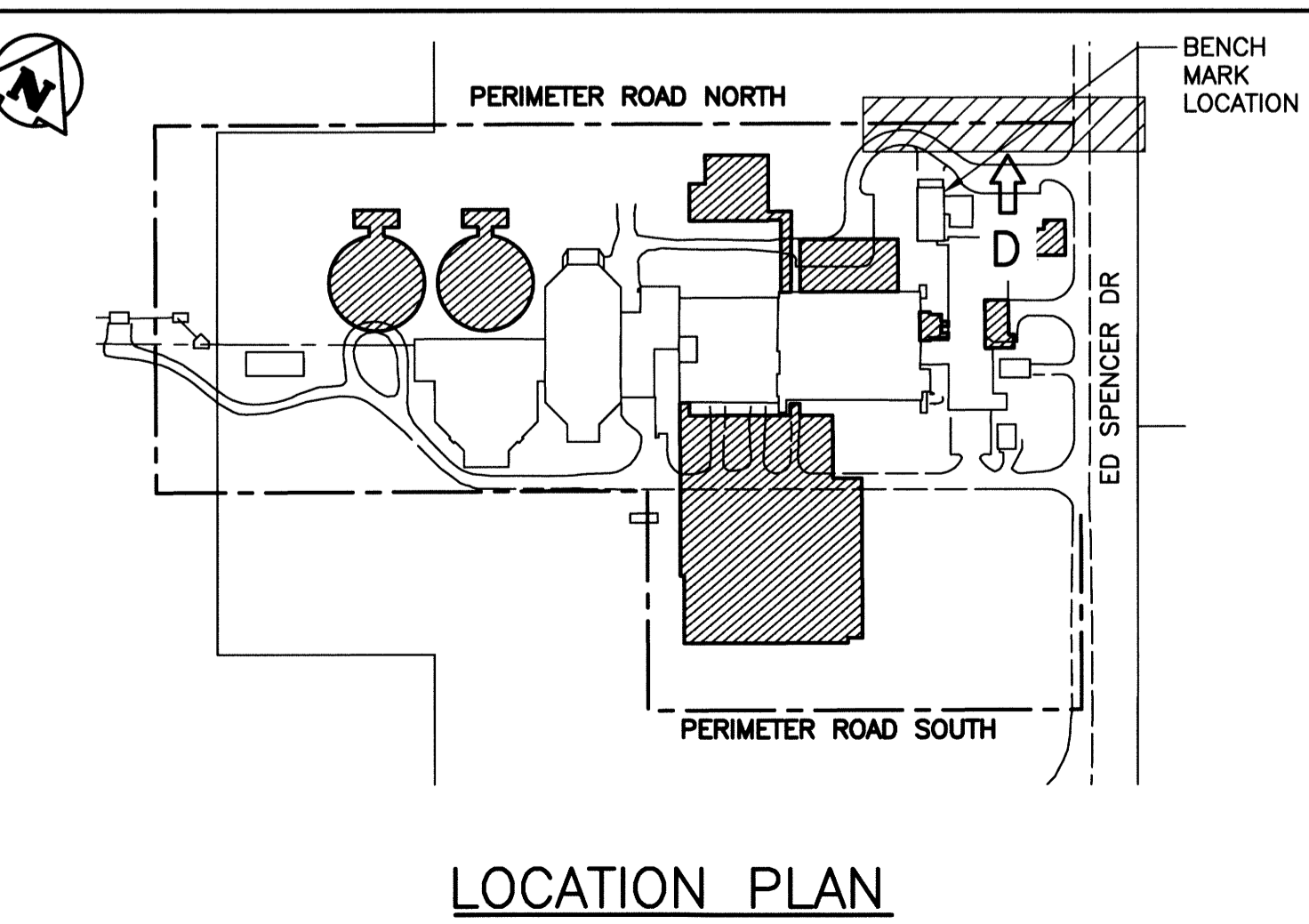


PROFILE VIEW-D
SCALE: 1:250



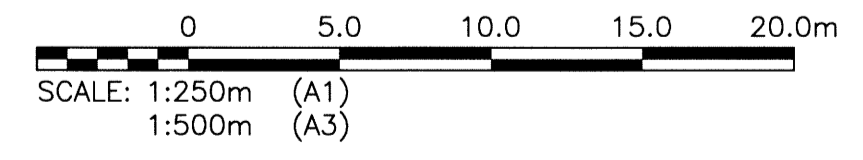
PLAN VIEW-D
SCALE: 1:250



LOCATION PLAN

- ROADWAY DRAWING NOTES**
- NOTES:
1. ALL WORK SHALL BE PERFORMED IN ACCORDANCE WITH THE CITY OF WINNIPEG STANDARD CONSTRUCTION SPECIFICATIONS.
 2. ALL PIECES OF EXISTING MUNICIPAL INFRASTRUCTURE TO BE REMOVED OR ABANDONED ARE IDENTIFIED IN GREATER DETAIL ON DRAWINGS 1-0102-CGAD-A006 SHEETS 001 THROUGH 012.

PERIMETER ROAD NORTH LAYOUT CO-ORDINATES			
STATION	EASTING (X)	NORTHING (Y)	REMARKS
5+75.0	636904.234	5517631.964	
6+91.15	637005.579	5517688.706	LIMIT OF WORK



LEGEND			
ITEM	EXISTING	NEW	ABANDONED
WM VALVE	⊙	⊙	
WM HYDRANT	⊕	⊕	
SEWER MH	⊙	⊙	
SEWER CB	□	■	□
MTS	○	●	
MTS MH	○	●	
HYDRO	—	—	---
HYDRO LS	—	—	---
HYDRO POLE	●	●	
GAS	—	—	---
DITCH	—	—	---
FENCE	x	x	

ITEM	EXISTING	NEW	ABANDONED
SIGN BOLLARD	⊙	⊙	
TREE	⊙	⊙	
BUSH	⊙	⊙	
ELEVATION	233.240	233.450	
CULVERT	====	====	
ROAD	----	----	
CONSTRUCTION ACCESS ROAD	----	----	

CH2MHILL

SNC-LAVALIN

DESIGNED BY: EMS
DRAWN BY: DMW
SCALE: AS NOTED
DATE: 2014/06/27

CHECKED BY: BJM
APPROVED BY: RJH
RELEASED FOR CONSTRUCTION BY:
DATE:

CONSULTANT NO.: 13-0338-002

ENGINEER'S SEAL

B.J. MIKOLAYENKO
Member 24688
PROFESSIONAL ENGINEER

June 22, 2014

THE CITY OF WINNIPEG
WATER AND WASTE DEPARTMENT

SOUTH END WATER POLLUTION CONTROL CENTRE
SEWPC UPGRADE/EXPANSION PROJECT
CIVIL

PERIMETER ROAD NORTH
STA 5+75 TO STA 6+91.15

CITY DRAWING NUMBER: 1-0102-CRSW-A002
SHEET: 004
REV: 00
SIZE: A1

APEGM
Certificate of Authorization
KGS Group
No. 245