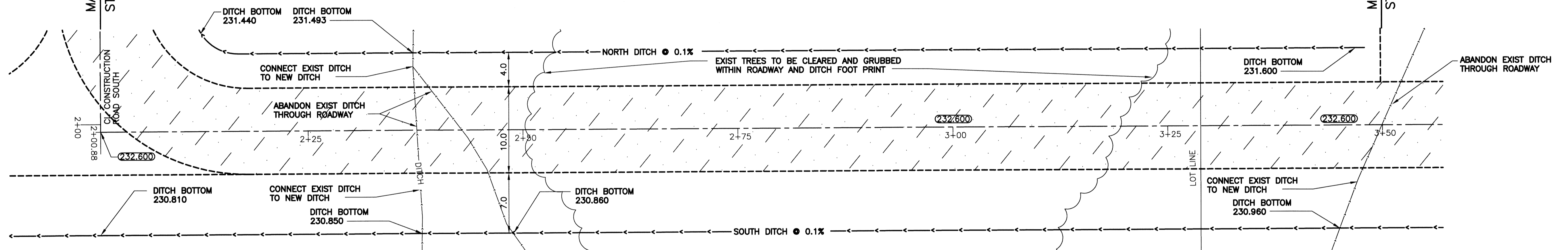
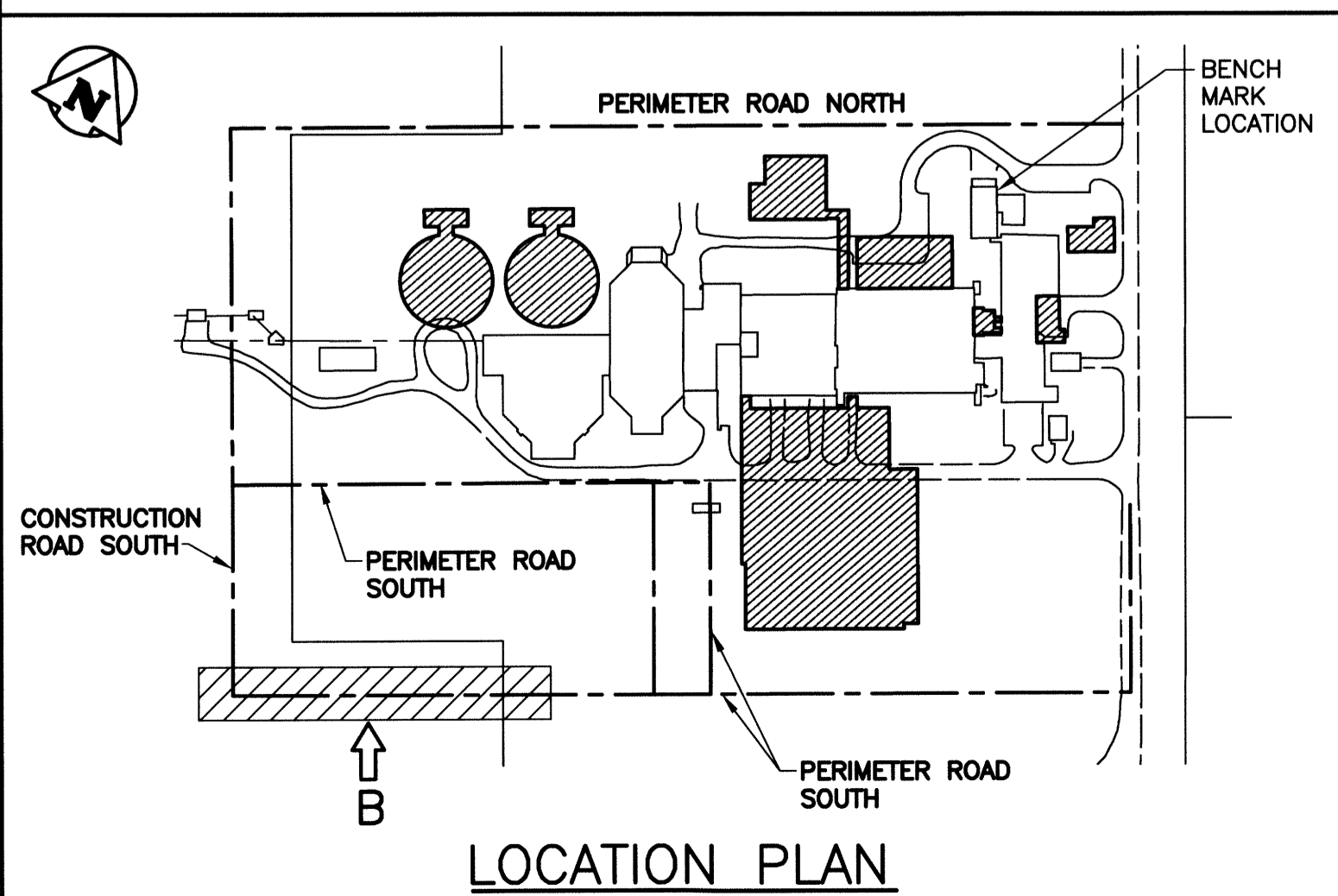


CONSTRUCTION ROAD SOUTH - PROFILE VIEW B  
SCALE: 1:250

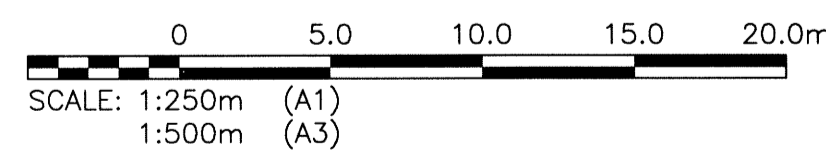


CONSTRUCTION ROAD SOUTH - PLAN VIEW-B  
SCALE: 1:250



LOCATION PLAN

**ROADWAY DRAWING NOTES**  
NOTES:  
1. ALL WORK SHALL BE PERFORMED IN ACCORDANCE WITH THE CITY OF WINNIPEG STANDARD CONSTRUCTION SPECIFICATIONS.  
2. ALL PIECES OF EXISTING MUNICIPAL INFRASTRUCTURE TO BE REMOVED OR ABANDONED ARE IDENTIFIED IN GREATER DETAIL ON DRAWINGS 1-0102-CGAD-A006 SHEETS 001 THROUGH 012.



ACCESS ROAD SOUTH LAYOUT CO-ORDINATES			
STATION	EASTING (X)	NORTHING (Y)	REMARKS
2+00.88	636768.728	5517247.086	CL INTERSECTION
3+50	636898.841	5517319.935	



LEGEND				LEGEND			
ITEM	EXISTING	NEW	ABANDONED	ITEM	EXISTING	NEW	ABANDONED
WM VALVE	⊕	⊕		SIGN	⊙	⊙	
WM HYDRANT	⊕	⊕		BOLLARD	⊙	⊙	
SEWER	—	—	—	TREE	⊙	⊙	
SEWER MH	⊙	⊙		BUSH	⊙	⊙	
SEWER CB	⊙	⊙		ELEVATION	233.240	233.450	
MTS	⊙	⊙		CULVERT	====	====	
MTS MH	⊙	⊙		ROAD	----	----	
HYDRO	—	—	—	CONSTRUCTION ACCESS ROAD	----	----	
HYDRO LS	—	—	—				
HYDRO POLE	—	—	—				
GAS	—	—	—				
DITCH	—	—	—				
FENCE	—	—	—				

B.M. BRASS PLATE LOCATED IN GRADE BEAM OF ADMINISTRATION BUILDING  
ELEV. 234.059

**CH2MHILL**  
SNC-LAVALIN  
DESIGNED BY: EMS  
DRAWN BY: DMW  
SCALE: AS NOTED  
DATE: 2014/06/27  
CONSULTANT NO.: 13-0338-002

CHECKED BY: BJM  
APPROVED BY: RJH  
RELEASED FOR CONSTRUCTION BY:  
DATE:

ENGINEER'S SEAL  
B.J. MIKOLAYENKO  
Member 24688  
REGISTERED PROFESSIONAL ENGINEER  
JUNE 22, 2014

**THE CITY OF WINNIPEG**  
Winnipeg WATER AND WASTE DEPARTMENT  
SOUTH END WATER POLLUTION CONTROL CENTRE  
SEWPC UPGRADE/EXPANSION PROJECT  
CIVIL  
CONSTRUCTION ACCESS ROAD SOUTH  
STA 2+00.88 TO STA 3+50

CITY DRAWING NUMBER	SHEET	REV.	SIZE
1-0102-CRSW-A004	002	00	A1