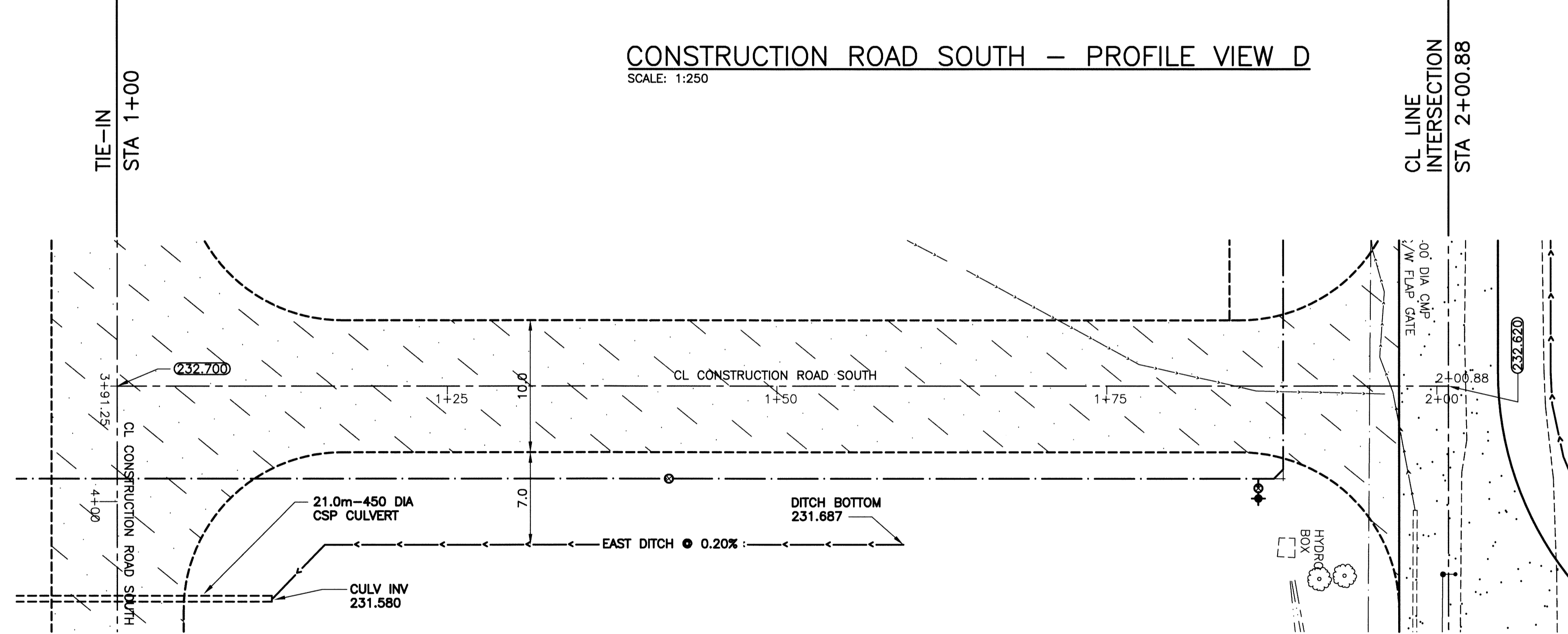
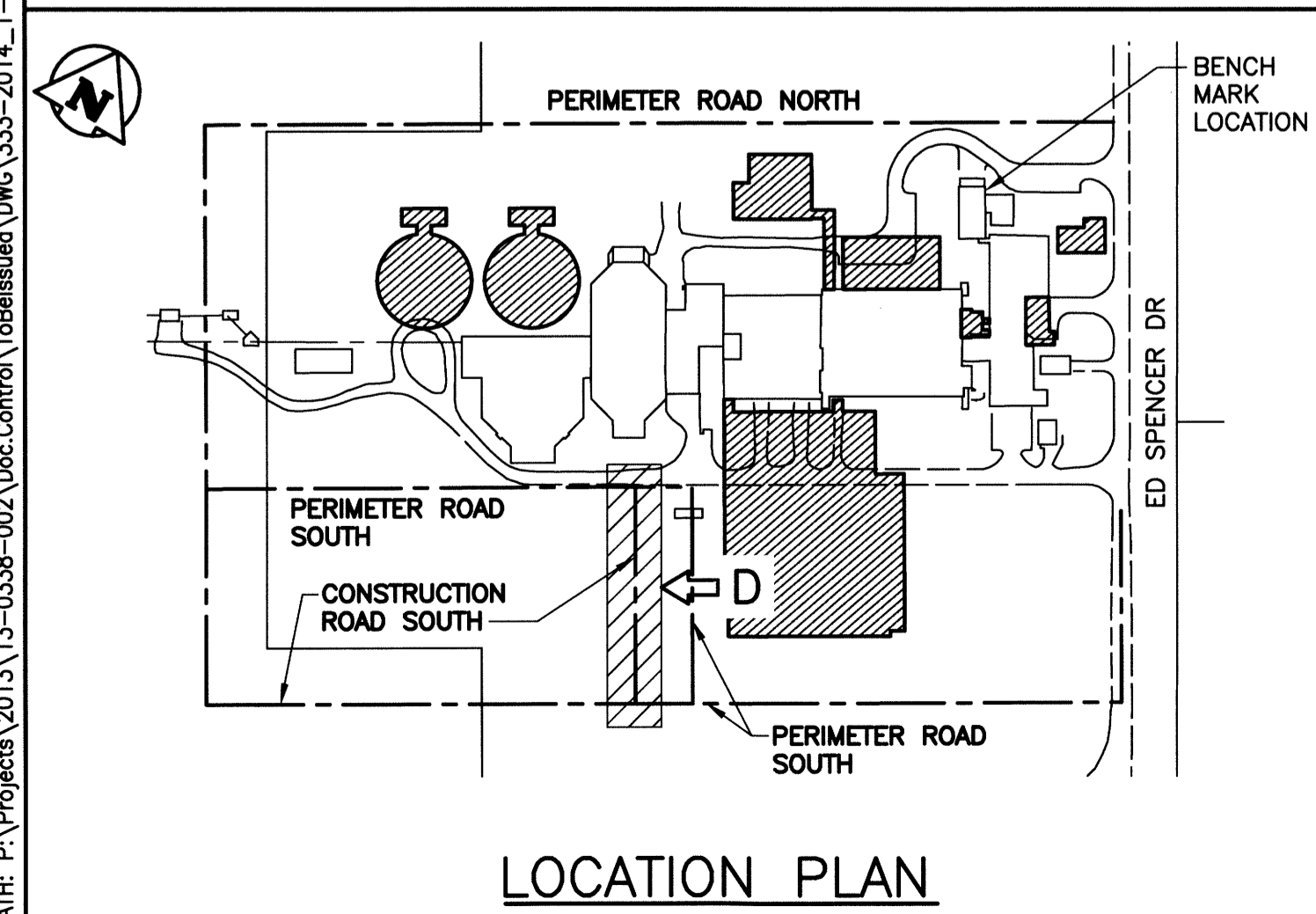
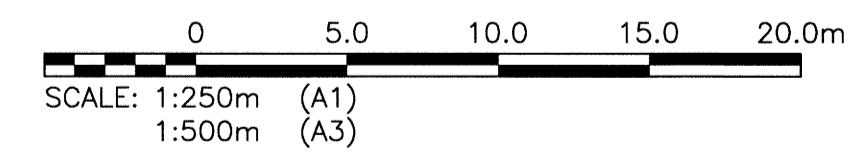


CONSTRUCTION ROAD SOUTH - PROFILE VIEW D
SCALE: 1:250



CONSTRUCTION ROAD SOUTH - PLAN VIEW D
SCALE: 1:250

ACCESS ROAD SOUTH LAYOUT CO-ORDINATES			
STATION	EASTING (X)	NORTHING (Y)	REMARKS
1+00	636934.835	5517340.087	CL INTERSECTION
2+00.88	636885.552	5517428.111	CL INTERSECTION



LOCATION PLAN

ROADWAY DRAWING NOTES
NOTES:
1. ALL WORK SHALL BE PERFORMED IN ACCORDANCE WITH THE CITY OF WINNIPEG STANDARD CONSTRUCTION SPECIFICATIONS.
2. ALL PIECES OF EXISTING MUNICIPAL INFRASTRUCTURE TO BE REMOVED OR ABANDONED ARE IDENTIFIED IN GREATER DETAIL ON DRAWINGS 1-0102-CGAD-A006 SHEETS 001 THROUGH 012.

LEGEND			
ITEM	EXISTING	NEW	ABANDONED
WM VALVE	⊗	⊕	
WM HYDRANT	⊙	⊕	
SEWER MH	○	●	○
SEWER CB	□	■	□
MTS			
MTS MH	○	●	
HYDRO			
HYDRO LS	●		
HYDRO POLE	●		
GAS	—	—	—
DITCH	—	—	—
FENCE	x	x	x
SIGN BOLLARD	⊙	⊙	
TREE	⊙	⊙	
BUSH	⊙	⊙	
ELEVATION	233.240	233.450	
CULVERT	=====	=====	
ROAD	-----	-----	
CONSTRUCTION ACCESS ROAD	-----	-----	

B.M. BRASS PLATE LOCATED IN GRADE BEAM OF ADMINSTRATON BUILDING ELEV. 234.059	
CH2MHILL.	
SNC-LAVALIN DESIGNED BY: EMS	KGS GROUP CHECKED BY: BJM
DRAWN BY: DMW	APPROVED BY: RJH
SCALE: AS NOTED	RELEASED FOR CONSTRUCTION BY:
DATE: 2014/06/27	DATE:
CONSULTANT NO.: 13-0338-002	



THE CITY OF WINNIPEG
WATER AND WASTE DEPARTMENT

SOUTH END WATER POLLUTION CONTROL CENTRE
SEWPC UPGRADE/EXPANSION PROJECT
CML
CONSTRUCTION ACCESS ROAD SOUTH
STA 1+00 TO STA 2+00.88

CITY DRAWING NUMBER	SHEET	REV.	SIZE
1-0102-CRSW-A004	004	00	A1