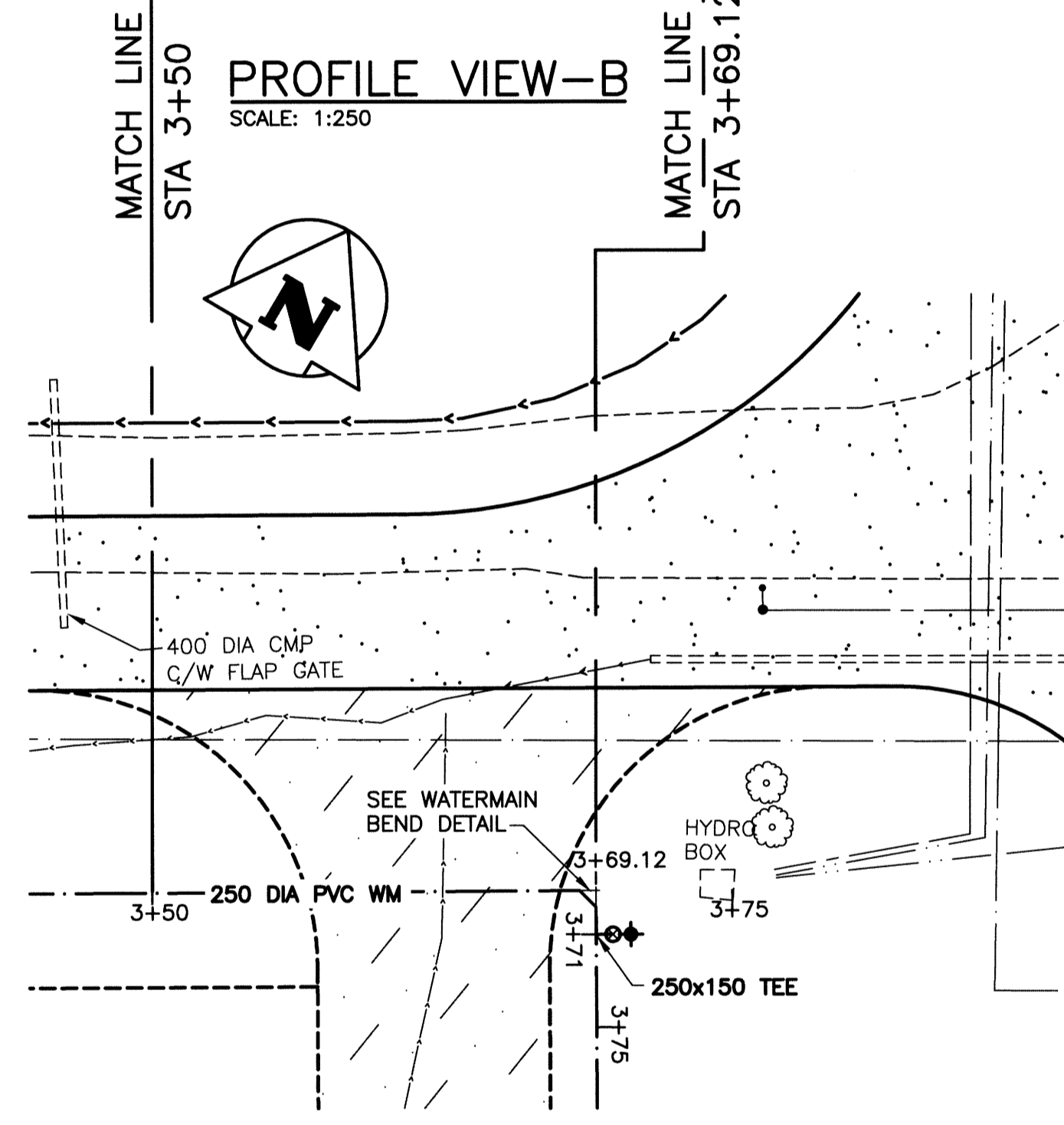
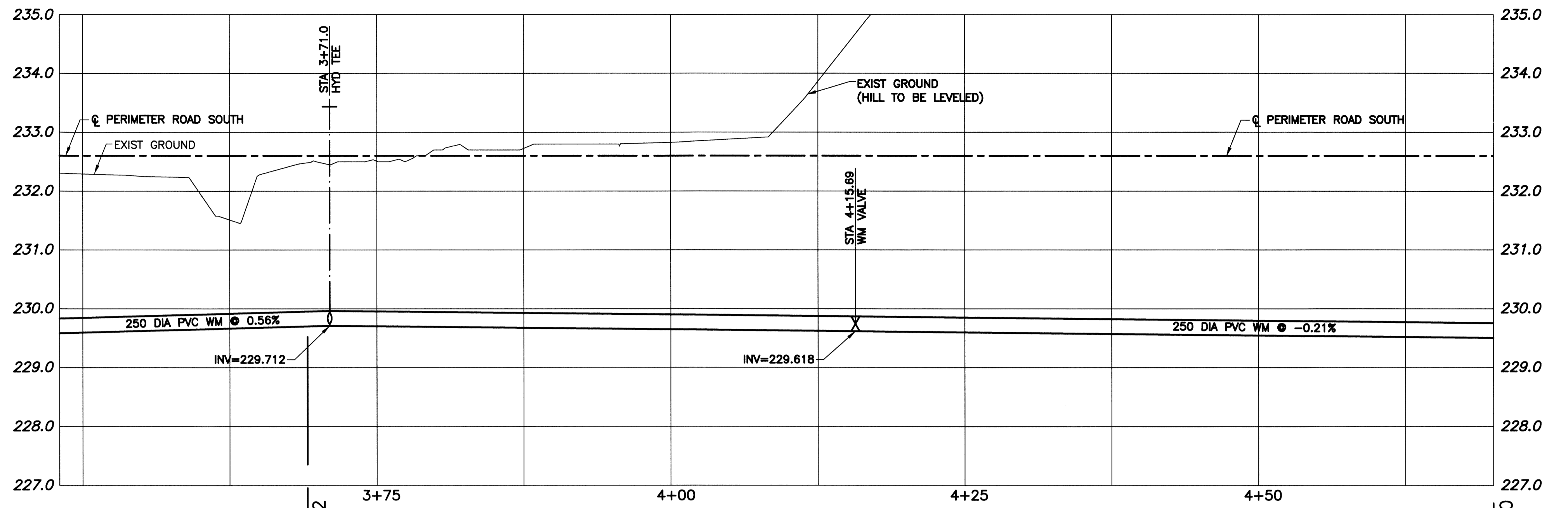


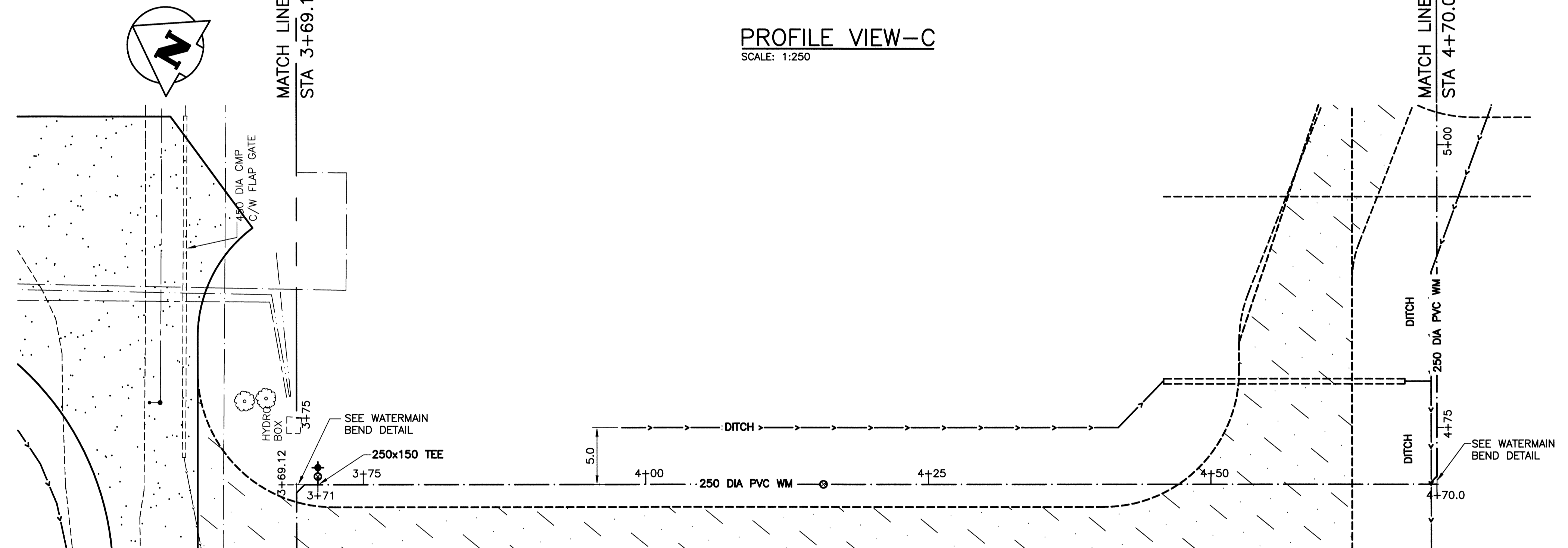
**PROFILE VIEW-B**  
SCALE: 1:250



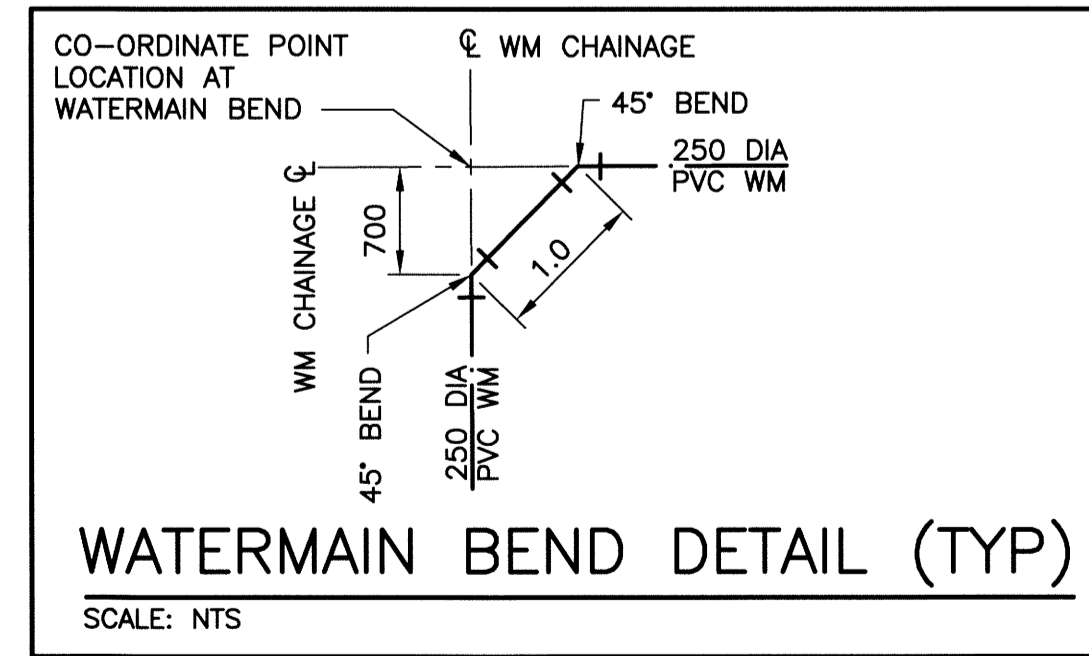
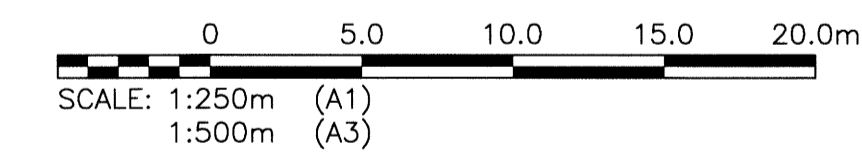
**PLAN VIEW-B**  
SCALE: 1:250



**PROFILE VIEW-C**  
SCALE: 1:250

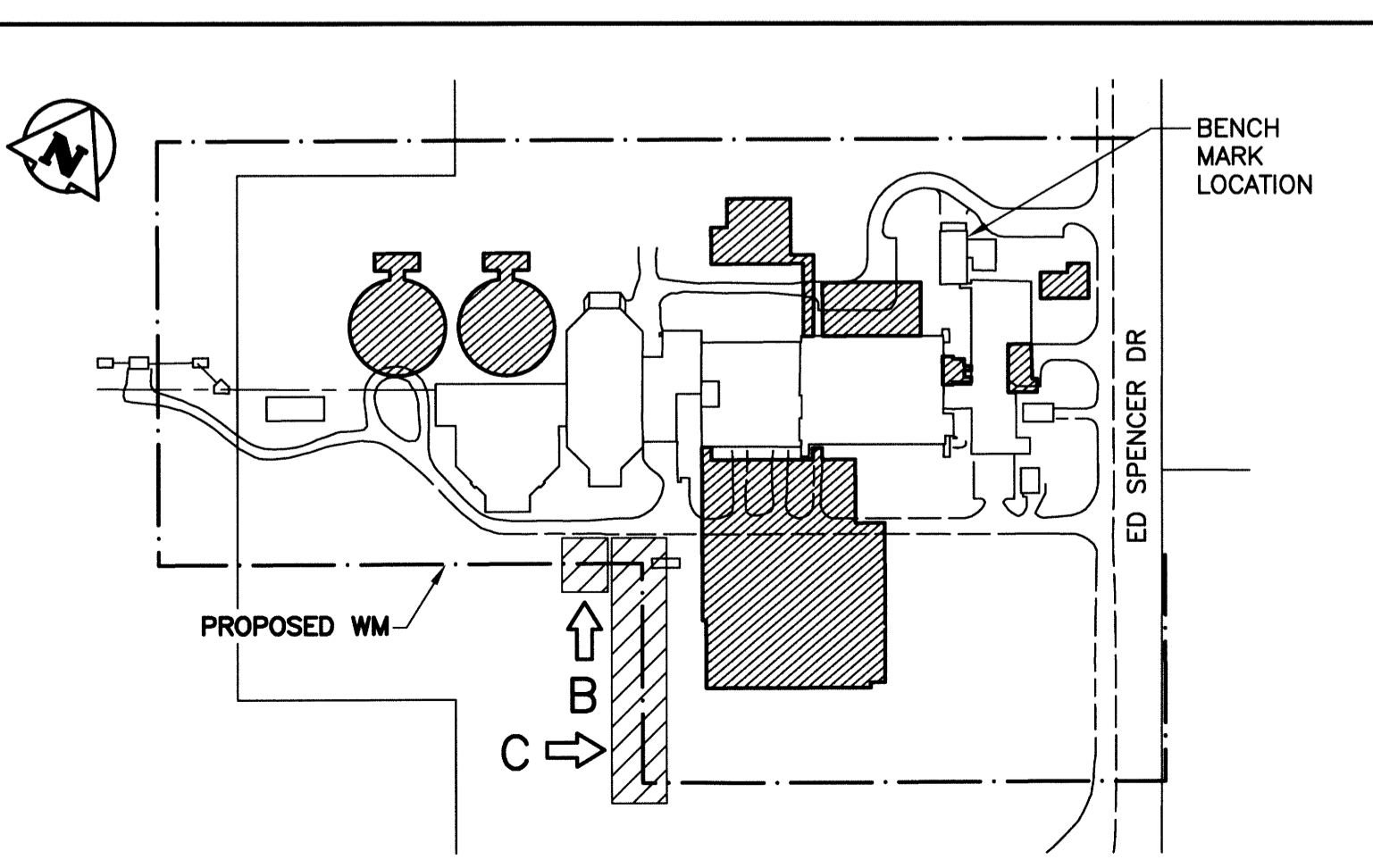


**PLAN VIEW-C**  
SCALE: 1:250



- WATERMAIN DRAWING NOTES**
- NOTES:**
- ALL WORK SHALL BE PERFORMED IN ACCORDANCE WITH THE CITY OF WINNIPEG STANDARD CONSTRUCTION SPECIFICATIONS.
  - ALL NEW WATERMAIN AND SERVICE CONNECTIONS SHALL HAVE MINIMUM 2.4 METRES OF COVER.
  - ALL PIECES OF EXISTING MUNICIPAL INFRASTRUCTURE TO BE REMOVED OR ABANDONED ARE IDENTIFIED IN GREATER DETAIL ON DRAWINGS 1-0102-CGAD-A006 SHEETS 001 THROUGH 012.

WATERMAIN LAYOUT CO-ORDINATES			
STATION	EASTING (X)	NORTHING (Y)	REMARKS
3+69.12	636897.766	5517420.624	90° BEND
3+71.00	636898.685	5517418.984	FIRE HYDRANT TEE
4+15.69	636920.524	5517379.983	WM VALVE
4+70.00	636917.050	5517332.601	90° BEND



ITEM	LEGEND			ITEM	LEGEND		
	EXISTING	NEW	ABANDONED		EXISTING	NEW	ABANDONED
WM	—	—	---	GAS	—	—	---
WM VALVE	⊙	⊙	---	DITCH	—	—	---
WM HYDRANT	⊙	⊙	---	FENCE	—	—	---
SEWER	—	—	---	SIGN	—	—	---
SEWER MH	⊙	⊙	---	BOLLARD	—	—	---
SEWER CB	⊙	⊙	---	TREE	—	—	---
MTS	—	—	---	BUSH	—	—	---
MTS MH	⊙	⊙	---	ELEVATION	233.240	233.450	---
HYDRO	—	—	---	CULVERT	—	—	---
HYDRO LS	—	—	---				
HYDRO POLE	—	—	---				

B.M. BRASS PLATE LOCATED IN GRADE BEAM OF ADMINSTRATON BUILDING ELEV. 234.059			
00	ISSUED FOR TENDER	06/2014	EMS
NO. REVISIONS		DATE	DESIGN/CHECK

**CH2MHILL.**

SNC-LAVALIN  
DESIGNED BY: EMS  
DRAWN BY: DMW  
SCALE: AS NOTED  
DATE: 2014/06/27

**KGS GROUP**  
CHECKED BY: BJM  
APPROVED BY: RJH  
RELEASED FOR CONSTRUCTION BY:  
DATE:

ENGINEER'S SEAL  
B.J. MIKOLAYENKO  
Member 24888  
PROFESSIONAL ENGINEER  
JUNE 25/2014

**THE CITY OF WINNIPEG**  
Winnipeg WATER AND WASTE DEPARTMENT

SOUTH END WATER POLLUTION CONTROL CENTRE  
SEWPC UPGRADE/EXPANSION PROJECT  
CML  
WATERMAIN SOUTH  
STA 3+72.57 TO STA 4+73.45

CITY DRAWING NUMBER	SHEET	REV.	SIZE
1-0102-CUTY-Y007	002	00	A1