

**GENERAL NOTES**

1. DEVICES, CABLE ROUTING AND SYSTEMS SHOWN ARE AT THEIR APPROXIMATE LOCATION. CONFIRM EXACT LOCATION AND ROUTING ON SITE, TO AVOID DAMAGE TO EXISTING SYSTEMS, AND TO AVOID FUTURE WORK AREAS. REVIEW THE SURVEY PLAN DRAWING PRIOR TO WORK.

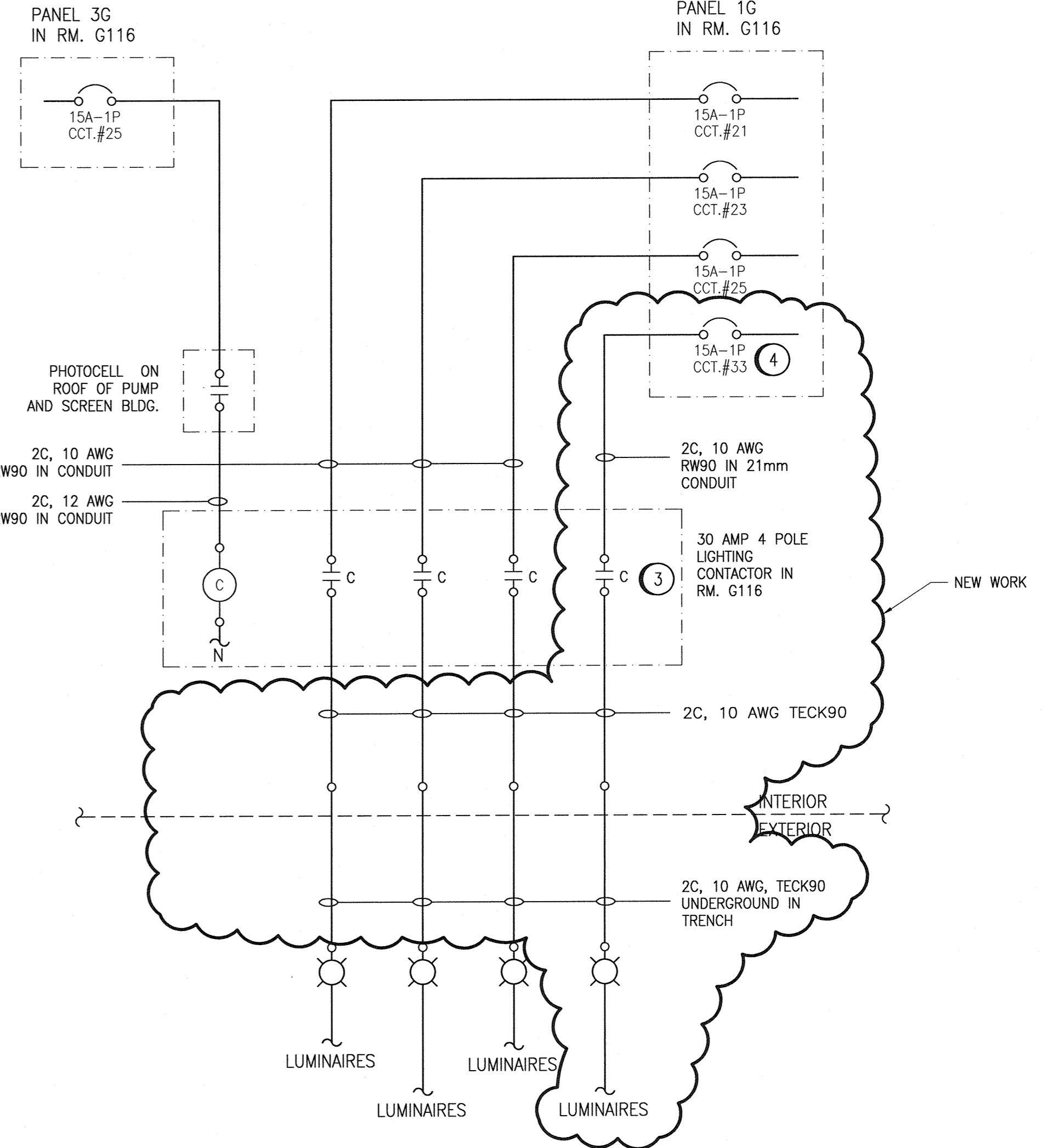
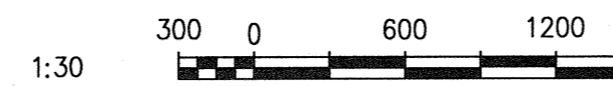
**SPECIFIC NOTES**

1. ROUTE CABLES UNDERGROUND NEAR BUILDING AND NEAR EXISTING BURIED SERVICES. EXCAVATE USING HYDROVAC, AVOID DAMAGING EXISTING SYSTEMS, CABLES, AND GROUND ELECTRODE.
2. ROUTE CABLING IN CONDUIT SLEEVE, UNDER ROADWAY. PROVIDE HDPE CONDUIT USING DIRECTIONAL BORING. RE-CONNECT EXISTING LUMINAIRES.
3. WIRE AND CONNECT EXISTING SPARE LIGHTING CONTACTOR CONTACT.
4. PROVIDE 15A, 1P BREAKER IN EXISTING PANELBOARD. BREAKER TO MATCH EXISTING. UPDATE EXISTING PANEL SCHEDULE.
5. HYDROVAC EXCAVATE AND DIRECTIONAL BORE AS REQUIRED TO BRING EXTERIOR LIGHTING CIRCUIT 1G-33 TO NEW PARKING LOT. PROVIDE HDPE CONDUIT SLEEVE UNDER ROADWAYS.

**SEWPCC LIGHTING SITE PLAN**

SCALE: 1 : 1000

6. PROVIDE NEW CIRCUIT 1G-33 (RUN FROM THE GRIT ELECTRICAL ROOM) FOR THE PARKING LOT LIGHTING. PROVIDE TWO LUMINAIRES, TYPE "C" COMPLETE WITH 9144mm (30') TREATED WOOD POST EMBEDDED MINIMUM OF 2200mm (7') BELOW GRADE.
7. PROVIDE TRENCHING AND CABLING TO RE-CONNECT EXTERIOR LIGHTING CIRCUIT 1G-21 AND 1G-23.
8. REFER TO DRAWING 1-0102-ECRT-G501-001 FOR APPROXIMATE ROUTING OF TECK 90 CABLE (FOR EXTERIOR LIGHTING AND TEMPORARY TRAILER POWER) INTERIOR TO THE BUILDING.
9. EXISTING FIXTURE (DISCONNECTED) TO REMAIN.



**ROADWAY LIGHTING SCHEMATIC**

SCALE: NTS

**LUMINAIRE SCHEDULE**

TYPE	MANUFACTURER	MODEL	LAMPS		VOLTS	LOAD VA	MOUNTING	NOTE
			QTY	TYPE				
A	GE LIGHTING	EASMH3F57A1ADKBZ C/W SZ5SS20J/1/SMST	1	80W LED	347		P	EXISTING
B	HOLOPHANE	SMST SERIES C/W SZ5SS20J/1/SMST	1	150W HPS	347		P	EXISTING
C	LITHONIA	KAD 150M R4 347 WWD04 CSA LPI	1	150W PULSE START M.H	347		P	PROVIDE 9144mm ROUND TREATED WOOD POLE FOR MOUNTING OF TEMPORARY SITE LIGHTING. PROVIDE MOUNTING ARMS.

MOUNTING LEGEND: P POLE MOUNTED

NOTES:

NO.	ISSUED FOR TENDER	06/2014	DB	ER
NO.	REVISIONS	DATE	DESIGN	CHECK

**CH2MHILL.**  
 SNC-Lavalin  
 DESIGNED BY: D. BECKER  
 DRAWN BY: M.J. PERSSON  
 SCALE: AS SHOWN  
 DATE: 2014/06/27  
 CONSULTANT NO.: 474248

ENGINEER'S SEAL  
**PROVINCE OF MANITOBA**  
**D.E. BECKER**  
 Member 23646  
 REGISTERED PROFESSIONAL ENGINEER  
 June 27 2014 Rev 00

**THE CITY OF WINNIPEG**  
 WATER AND WASTE DEPARTMENT  
 SOUTH END WATER POLLUTION CONTROL CNTR  
 SEWPCC UPGRADING/EXPANSION PROJECT  
 SITE LIGHTING  
 NEW WORK  
 CITY DRAWING NUMBER: 1-0102-ELTG-A001  
 SHEET: 001  
 REV: 00  
 SIZE: A1