

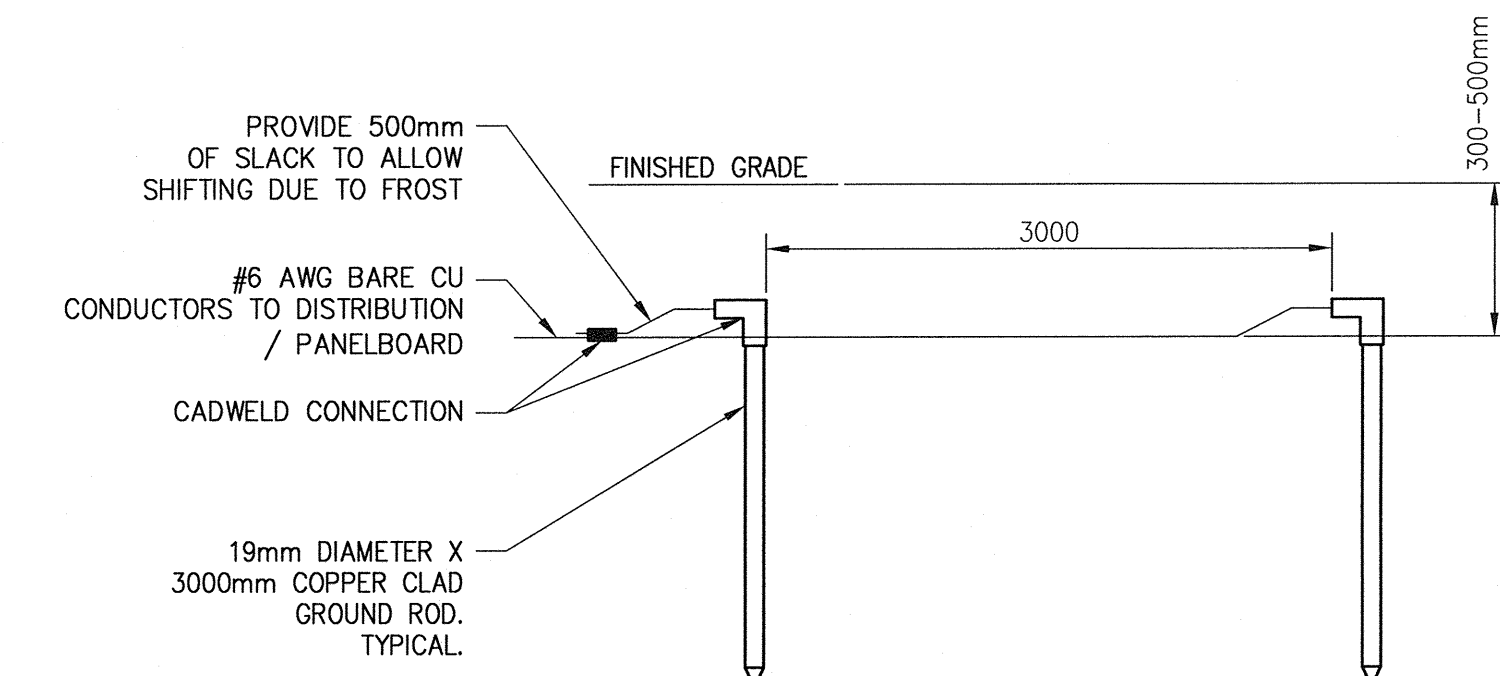
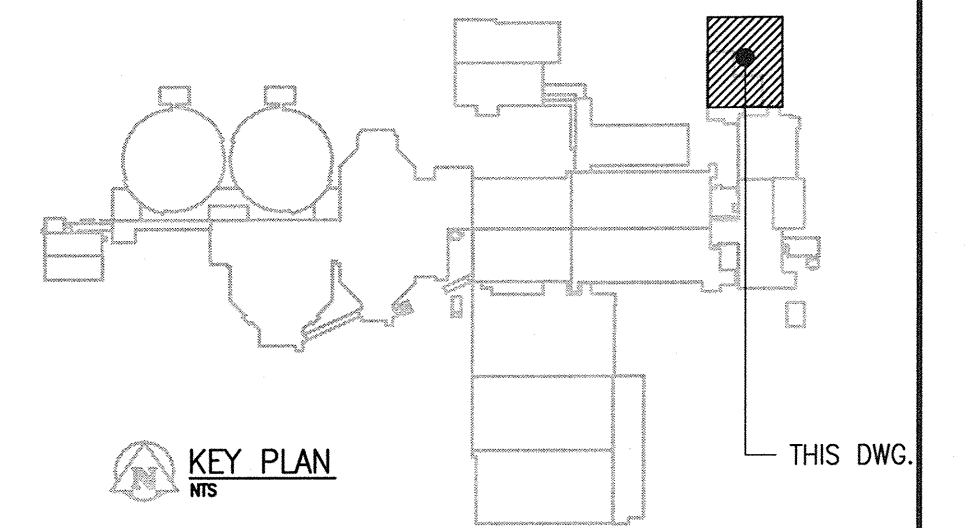
SEWPCC PARKING LOT SITE PLAN
SCALE: 1 : 250

GENERAL NOTES

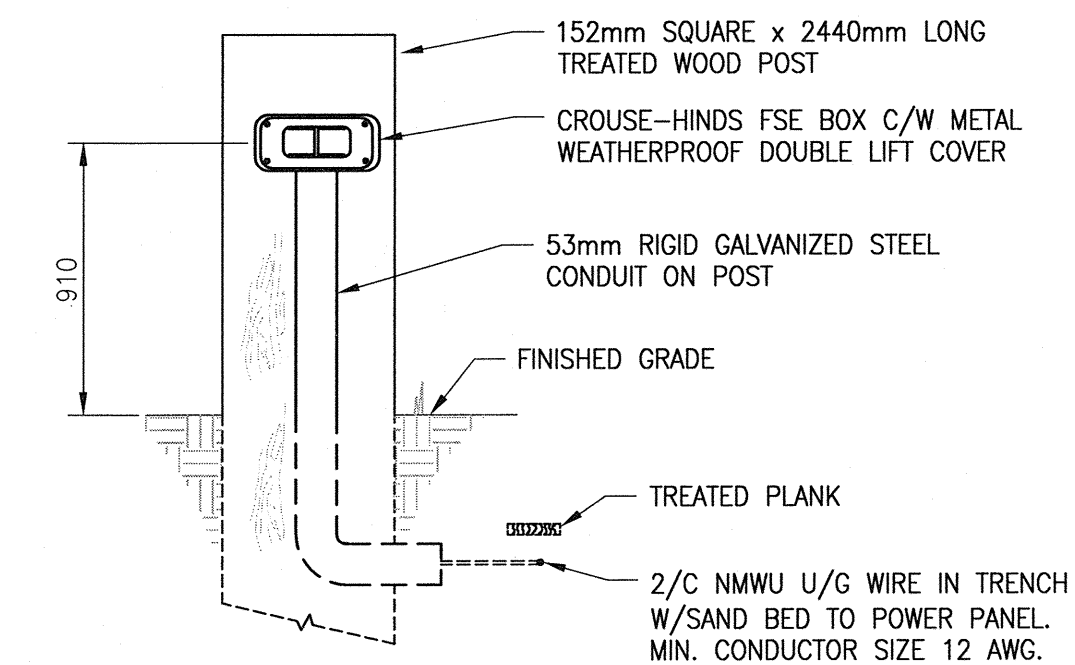
- REFER TO DWG. 1-0102-ESCH-A001 FOR PANEL SCHEDULE.
- REFER TO DWG. 1-0102-ESLD-A001 FOR SINGLE LINE DRAWING.
- ALL GROUND SYSTEM CONNECTIONS (BELOW GRADE) SHALL BE MADE USING CADWELD.
- THE SITE PLAN SHOWS DEVICES AT THEIR APPROXIMATE LOCATION.
- CONTRACTOR SHALL REFER TO THE SITE SURVEY PLAN PRIOR TO PERFORMING ANY EXCAVATIONS.
- ALL WORK SHALL ADHERE TO THE COW BYLAWS, AND THE CANADIAN ELECTRICAL CODE.
- PROVIDE UP TO DATE AS-BUILT DRAWINGS UPON COMPLETION OF THE WORK.
- REMOVE NEUTRAL TO GROUND JUMPER INSIDE TRAILER PANELS IN ACCORDANCE WITH CEC REQUIREMENTS. PROVIDE ELECTRICAL GROUND CONNECTIONS TO STRUCTURAL STEEL OF TRAILERS PER CEC REQUIREMENTS.

SPECIFIC NOTES

- PROVIDE 400A, 600/347V DISTRIBUTION PANEL DP-G799 MOUNTED ON TREATED WOOD SUPPORT.
- PROVIDE PARKING RECEPTACLE COMPLETE WITH WOOD POST (SEE DETAIL 2). PROVIDE LAMACOID TAG ATTACHED TO POST "RESTRICTED CAPACITY - BLOCK HEATERS ONLY". TYPICAL.
- PROVIDE MINI POWER CENTER (TRANSFORMER AND PANELBOARD) C/W MOUNTING SUPPORTS. REFER TO DWG. 1-0102-ESCH-A001 DETAIL 1.
- WIRE AND CONNECT 120 / 240 VAC ELECTRICAL POWER TO TRAILERS. CONFIRM EQUIPMENT / MAIN TRAILER PANEL LOCATIONS ON SITE. MARK-UP AS-BUILT DRAWINGS TO REFLECT THE ACTUAL EQUIPMENT LOCATIONS.
- PROVIDE 103mm (RIGID PVC/HDPE FOR EXTERIOR & EMT FOR INTERIOR) CONDUIT FROM ADMIN BLDG ELECTRICAL ROOM M117 TELEPHONE PANEL TO SITE TRAILER. UTILIZE DIRECTIONAL BORING UNDER ROADWAY. PROVIDE 2 PULLCORDS IN CONDUIT SYSTEM. PROVIDE PLASTIC BUSHINGS AT CONDUIT ENDS & JUNCTION BOXES.
- PRIOR TO INSTALLING U.G COMMUNICATION CONDUIT INTO CONSTRUCTION TRAILER, CONFIRM AND COORDINATE A SUITABLE LOCATION FOR COMMUNICATION CONDUIT ENTRY WITH THE CONTRACT ADMINISTRATOR. COMMUNICATION CONDUIT ENTRY WILL VARY DEPENDING ON THE TRAILER. MAKE ALLOWANCES.
- PRIOR TO INSTALLING THE TRANSFORMER, EXTERIOR TO THE TRAILER FOR THE ELECTRICAL SERVICE ENTRANCE, CONFIRM THE LOCATION OF THE MAIN PANELBOARD WITHIN THE TRAILER. THE PANELBOARD LOCATION WILL VARY DEPENDING ON THE ACTUAL TRAILER. LOCATE TRANSFORMER AT A SUITABLE LOCATION. PROVIDE POWER CABLING TO THE TRAILER MAIN PANELBOARD. PROVIDE GROUND ELECTRODE & CABLING CONNECTION TO THE MAIN PANELBOARD. TYPICAL.
- PROVIDE 53mm CONDUIT C/W JUNCTION BOXES BETWEEN TRAILERS FOR COMMUNICATION CABLE INSTALLATION. PROVIDE 2 PULLCORDS IN CONDUIT SYSTEM. PROVIDE PLASTIC BUSHINGS AT ALL CONDUIT ENDS. CONFIRM EXACT CONDUIT LOCATION / ROUTING ON SITE, WITH THE CONTRACT ADMINISTRATOR.
- PROVIDE 103mm EMT CONDUIT (COMPLETE WITH PULLBOXES AND 2 PULLCORDS) ROUTED INSIDE THE BUILDING TO THE CENTRAL COMMUNICATION PANEL IN THE ELECTRICAL ROOM. CONFIRM EXACT ROUTING ON SITE. INSTALL CONDUIT CONCEALED WHERE POSSIBLE. PROVIDE PULL BOXES / JUNCTION BOXES AS REQUIRED FOR A MAXIMUM OF TWO 90 DEGREE BENDS BETWEEN PULL POINTS.



DETAIL 1 : GROUND ELECTRODE
SCALE: NTS



DETAIL 2 : PARKING RECEPTACLE
SCALE: NTS

LEGEND

	PARKING RECEPTACLE C/W POST
	PANELBOARD
	TRANSFORMER
	3000mm LONG (19mm DIA) COPPER CLAD GROUND ROD



NO.	REVISIONS	DATE	DESIGN	CHECK
00	ISSUED FOR TENDER	06/2014	DB	ER

CH2MHILL.
SNC-Lavalin
DESIGNED BY: D. BECKER
DRAWN BY: M.J. PERSSON
SCALE: AS SHOWN
DATE: 2014/06/27

KGS GROUP
CHECKED BY: E. RYCZKOWSKI
APPROVED BY: E. RYCZKOWSKI
ISSUED FOR CONSTRUCTION
DATE: _____

CONSULTANT NO.: 474248

ENGINEER'S SEAL
PROVINCE OF MANITOBA
D.E. BECKER
Member
23646
REGISTERED PROFESSIONAL ENGINEER
JUNE 27 2014

THE CITY OF WINNIPEG
WATER AND WASTE DEPARTMENT
SOUTH END WATER POLLUTION CONTROL CNETRE
SEWPCC UPGRADING/EXPANSION PROJECT
LAYOUT & DETAILS
TEMPORARY SITE PARKING

CITY DRAWING NUMBER: 1-0102-ELYT-A001
SHEET: 001
REV: 00
SIZE: A1