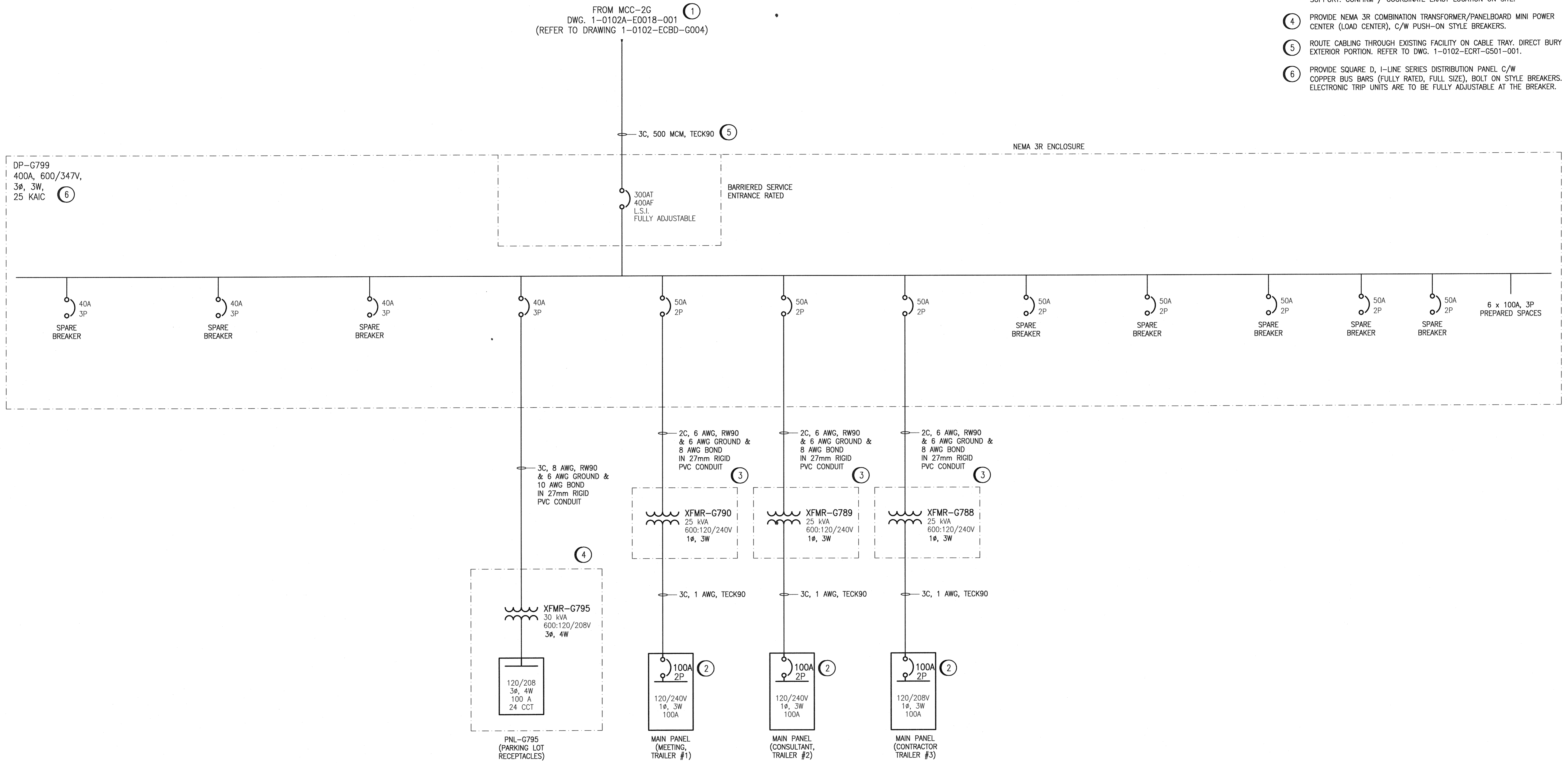


GENERAL NOTES

1. ALL 600VAC EQUIPMENT TO BE 25 KAIC (MINIMUM) FULLY RATED. SERIES RATED EQUIPMENT IS NOT ACCEPTABLE
2. ALL EQUIPMENT SHOWN IS NEW AND TO BE SUPPLIED AND INSTALLED BY THE E.C.
3. ALL CONDUCTORS TO BE COPPER

SPECIFIC NOTES

1. POWER SUPPLY LOCATED IN EXISTING MCC-2G IN EXISTING GRIT BLDG. ELECTRICAL ROOM.
2. PROVIDE GROUND ELECTRODES AS PER CEC REQUIREMENTS FOR TRAILER SERVICE PANELS. (SEE DWG. 1-0102-ELYT-A001-001)
3. PROVIDE TRANSFORMER MOUNTED ON TREATED WOOD POSTS NEAR THE TRAILER SERVICE ENTRANCE. PANEL POSTS TO BE EMBEDDED INTO THE GROUND FOR SUPPORT. CONFIRM / COORDINATE EXACT LOCATION ON SITE.
4. PROVIDE NEMA 3R COMBINATION TRANSFORMER/PANELBOARD MINI POWER CENTER (LOAD CENTER), C/W PUSH-ON STYLE BREAKERS.
5. ROUTE CABLING THROUGH EXISTING FACILITY ON CABLE TRAY. DIRECT BURY EXTERIOR PORTION. REFER TO DWG. 1-0102-ECRT-G501-001.
6. PROVIDE SQUARE D, I-LINE SERIES DISTRIBUTION PANEL C/W COPPER BUS BARS (FULLY RATED, FULL SIZE), BOLT ON STYLE BREAKERS. ELECTRONIC TRIP UNITS ARE TO BE FULLY ADJUSTABLE AT THE BREAKER.



DESIGNED BY: D. BECKER		CHECKED BY: E. RYCZKOWSKI		SOUTH END WATER POLLUTION CONTROL CNETRE SEWPCC UPGRADING/EXPANSION PROJECT SINGLE LINE DIAGRAM TEMPORARY ELECTRICAL SERVICES		CITY DRAWING NUMBER 1-0102-ESLD-A001	
DRAWN BY: M.J. PERSSON		APPROVED BY: E. RYCZKOWSKI		SHEET 001		REV. SIZE 00 A1	
SCALE: NTS		ISSUED FOR CONSTRUCTION		CONSULTANT NO.: 474248		FILE NAME: 1-0102-ESLD-A001.dwg	
DATE: 2014/06/27		DATE: 06/2014		DATE: 06/2014		DATE: 06/2014	
NO. REVISIONS		DATE		DESIGN CHECK		PLOT DATE: Jun 26, 2014 - 12:02pm	