

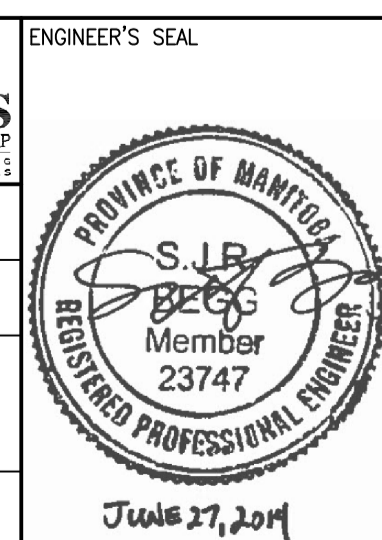
NOTES:

1. REMOVE EXISTING  $\phi 32$  NATURAL GAS LINE.
2. SUPPLY AND INSTALL  $\phi 32$  NATURAL GAS PIPING MEETING ASTM A333 GRADE 6, SCH 80 WITH EXTERNAL PVC YELLOW JACKET.
3. ENSURE NATURAL GAS LINE IS LOCATED OUTSIDE OF EXCAVATION LIMITS. VERIFY EXISTING UNDERGROUND SERVICES LOCATION PRIOR TO EXCAVATION. COORDINATE NATURAL GAS RELOCATION WITH ANY OTHER EXCAVATIONS TO AVOID ANY OVERLAP BETWEEN THE NATURAL GAS LINE AND THE EXCAVATION WORKS.
4. SEE SECTION DETAIL: DIRECT CABLE BURIAL U.G. INSTALLATION ON DRAWING 1-0102-ECRT-S001 TO COORDINATE EXCAVATIONS. MAINTAIN A MINIMUM SPACING OF 1.0m FROM ELECTRICAL CABLES.
5. CONSTRUCT IN ACCORDANCE WITH CITY OF WINNIPEG SPECIFICATION:  
CW2030 EXCAVATION BEDDING AND BACKFILL  
SD-001 STANDARD PIPE BEDDING CLASSES  
SD-002 STANDARD TRENCH AND EXCAVATION BACKFILL CLASSES.



NO.	REVISIONS	DATE	DESIGN	CHECK
00	ISSUED FOR TENDER	06/2014	J.C.	S.B.

<b>CH2MHILL</b>		<b>KCS GROUP</b>	
DESIGNED BY: S. BEGG	CHECKED BY: S. BEGG	APPROVED BY: B. WILLIAMSON	ISSUED FOR CONSTRUCTION
SCALE: 1:250	DATE: 2014/06/27	BY:	DATE:
CONSULTANT NO.: 474248			



**THE CITY OF WINNIPEG**  
WATER AND WASTE DEPARTMENT

SOUTH END WATER POLLUTION CONTROL CENTRE  
SEWPPC UPGRADE/EXPANSION PROJECT  
MECHANICAL  
NATURAL GAS LINE RELOCATION

CITY DRAWING NUMBER: 1-0102-MUTY-Y001  
SHEET: 001  
REV: 00  
SIZE: A1