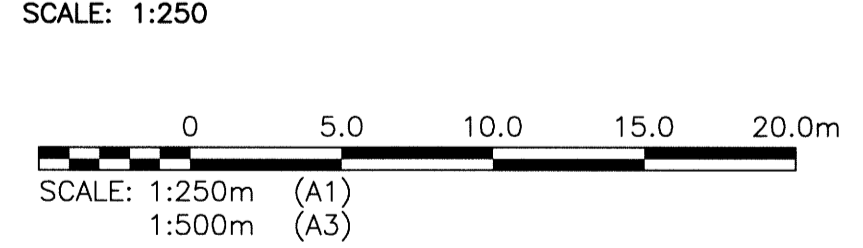
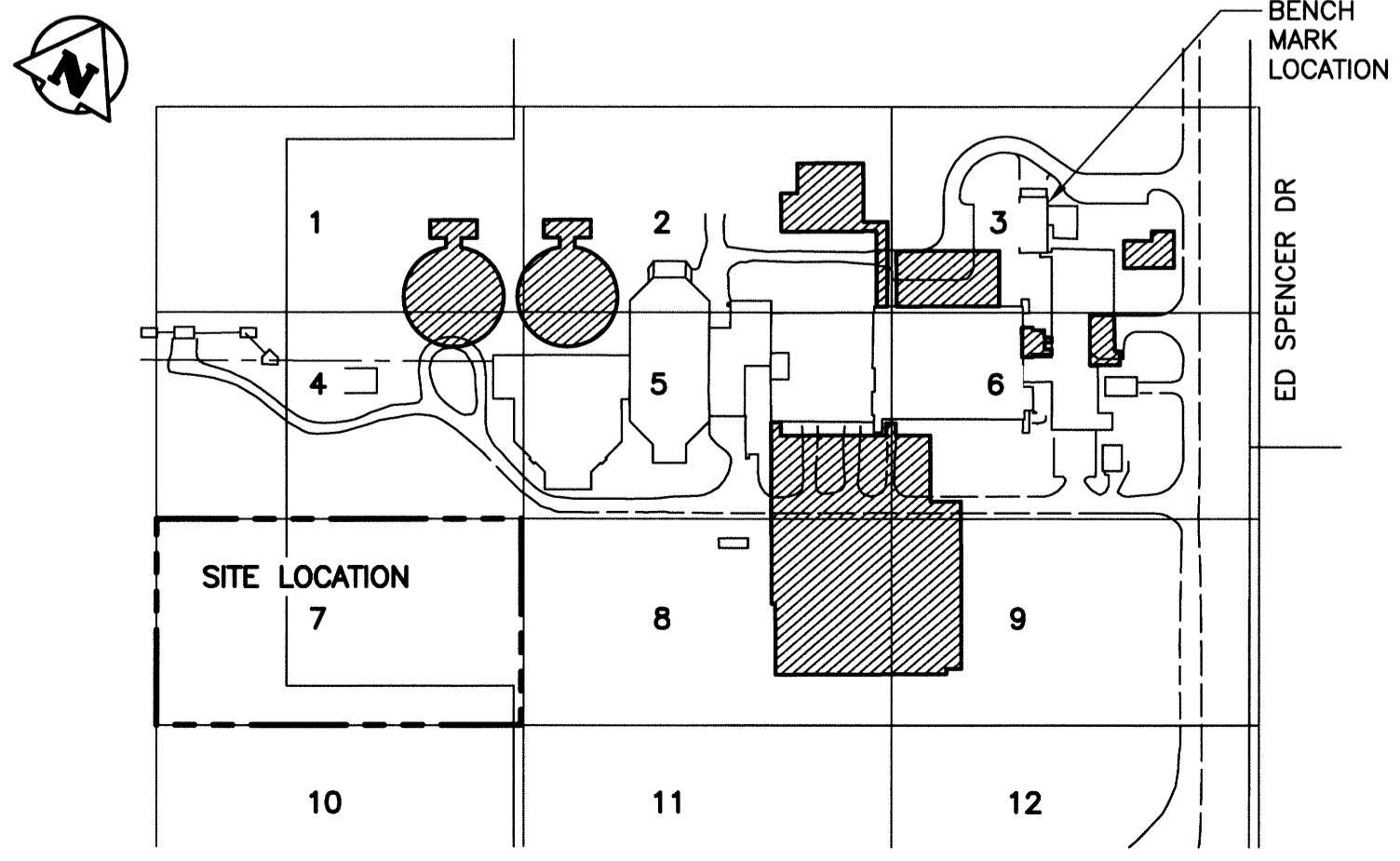


LEGEND	EXISTING	NEW
SEWER		
SEWER MH	○	●
SEWER PLUG	→	
SEWER CB	□	
SEWER STRUCT	□ □	
WM		
WM VALVE	⊗	⊙
WM HYDRANT	⊕	
GAS		
HYDRO		
HYDRO POLE	●HP	
HYDRO STR	□ □	
HYDRO POLE	●H	
STREET LIGHT	●	
HYDRO TRANSFORMER	⊠	⊠
BOLLARD	⊙	
TREE	⊕	
SHRUBS/BUSH	⊕	
CULVERT	====	====
DITCH	→	→
ROAD	---	---
FENCE	x-x	x-x
LEASED LAND UNDER CULTIVATION	- - - -	
EXIST STRUCTURE TO BE MODIFIED		▨
NEW STRUCTURE		▩
NEW ROAD		▩
CONSTRUCTION ACCESS RAMP		---
HYDRO DUCT		---
SHORING AND LAGGING		▩

PLAN - SITE LOCATION 7



NOTE:
1. ALL WORK SHALL BE PERFORMED IN ACCORDANCE WITH THE CITY OF WINNIPEG STANDARD CONSTRUCTION SPECIFICATIONS



LOCATION PLAN



B.M.	BRASS PLATE LOCATED IN GRADE BEAM OF ADMINSTRATON BUILDING		
ELEV.	234.059		
DESIGNED BY:	EMS		
CHECKED BY:	BJM		
DRAWN BY:	DMW		
APPROVED BY:	RJH		
SCALE:	AS NOTED		
DATE:	2014/06/27		
RELEASED FOR CONSTRUCTION BY:			
DATE:			
CONSULTANT NO.:	13-0338-002		
NO.	REVISIONS	DATE	DESIGN CHECK
00	ISSUED FOR TENDER	06/2014	EMS

CH2MHILL.

SNC-LAVALIN

KGS GROUP

DESIGNED BY: EMS
CHECKED BY: BJM
DRAWN BY: DMW
APPROVED BY: RJH
SCALE: AS NOTED
DATE: 2014/06/27
RELEASED FOR CONSTRUCTION BY: [Signature]

ENGINEER'S SEAL

PROVINCE OF MANITOBA
B.J. MIKOLAYENKO
Member 24888
REGISTERED PROFESSIONAL ENGINEER
JUNE 25/2014

THE CITY OF WINNIPEG
WATER AND WASTE DEPARTMENT

SOUTH END WATER POLLUTION CONTROL CENTRE
SEWPPC UPGRADE/EXPANSION PROJECT
CML
SITE REMOVALS - LOCATION 7

CITY DRAWING NUMBER	SHEET	REV.	SIZE
4-0102-CGAD-A001	007	00	00