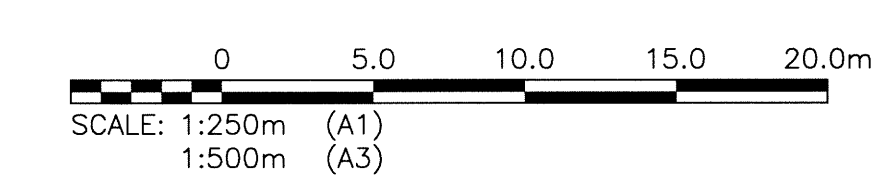


BIOREACTOR BUILDING

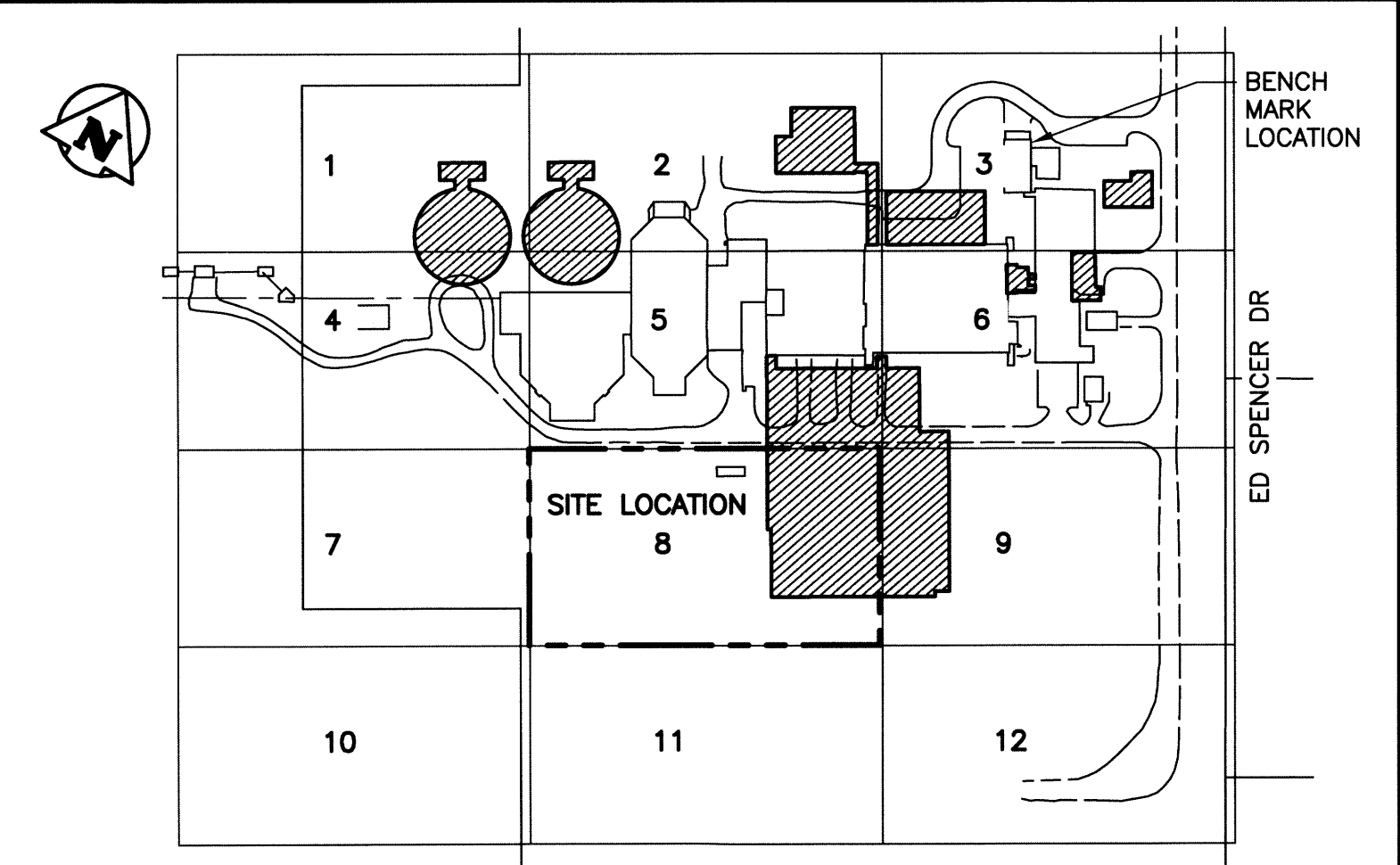
PLAN - SITE LOCATION 8

SCALE: 1:250



LEGEND	EXISTING	NEW
SEWER		
SEWER MH	○	●
SEWER PLUG	—	
SEWER CB	□	
SEWER STRUCT	□ □	
WM		
WM VALVE	⊗	⊙
WM HYDRANT	⊕	
GAS		
HYDRO		
HYDRO POLE	●HP	
HYDRO STR	□ □	
HYDRO POLE	●H	
STREET LIGHT	⊙	
HYDRO TRANSFORMER	⊠	⊠
BOLLARD	⊙	
TREE	⊙	
SHRUBS/BUSH	⊙	
CULVERT	—	—
DITCH	—	—
ROAD	—	—
FENCE	—	—
LEASED LAND UNDER CULTIVATION	—	—
EXIST STRUCTURE TO BE MODIFIED		▨
NEW STRUCTURE		▨
NEW ROAD		▨
CONSTRUCTION ACCESS RAMP		—
HYDRO DUCT		—
SHORING AND LAGGING		—

NOTE:  
1. ALL WORK SHALL BE PERFORMED IN ACCORDANCE WITH THE CITY OF WINNIPEG STANDARD CONSTRUCTION SPECIFICATIONS



LOCATION PLAN



B.M. BRASS PLATE LOCATED IN GRADE BEAM OF ADMINSTRATON BUILDING ELEV. 234.059	<b>CH2MHILL</b>		ENGINEER'S SEAL
	SNC-LAVALIN DESIGNED BY: EMS	CHECKED BY: BJM	
	DRAWN BY: DMW	APPROVED BY: RJH	
	SCALE: AS NOTED	RELEASED FOR CONSTRUCTION BY:	
	DATE: 2014/06/27	DATE:	
00 ISSUED FOR TENDER 06/2014 EMS	CONSULTANT NO.: 13-0338-002		
NO. REVISIONS	DATE	DESIGN/CHECK	

**THE CITY OF WINNIPEG**  
WATER AND WASTE DEPARTMENT

SOUTH END WATER POLLUTION CONTROL CENTRE  
SEMPCC UPGRADE/EXPANSION PROJECT  
CIVIL  
SITE REMOVALS - LOCATION 8

CITY DRAWING NUMBER: 4-0102-CGAD-A001  
SHEET: 008  
REV: 00  
SIZE: A1