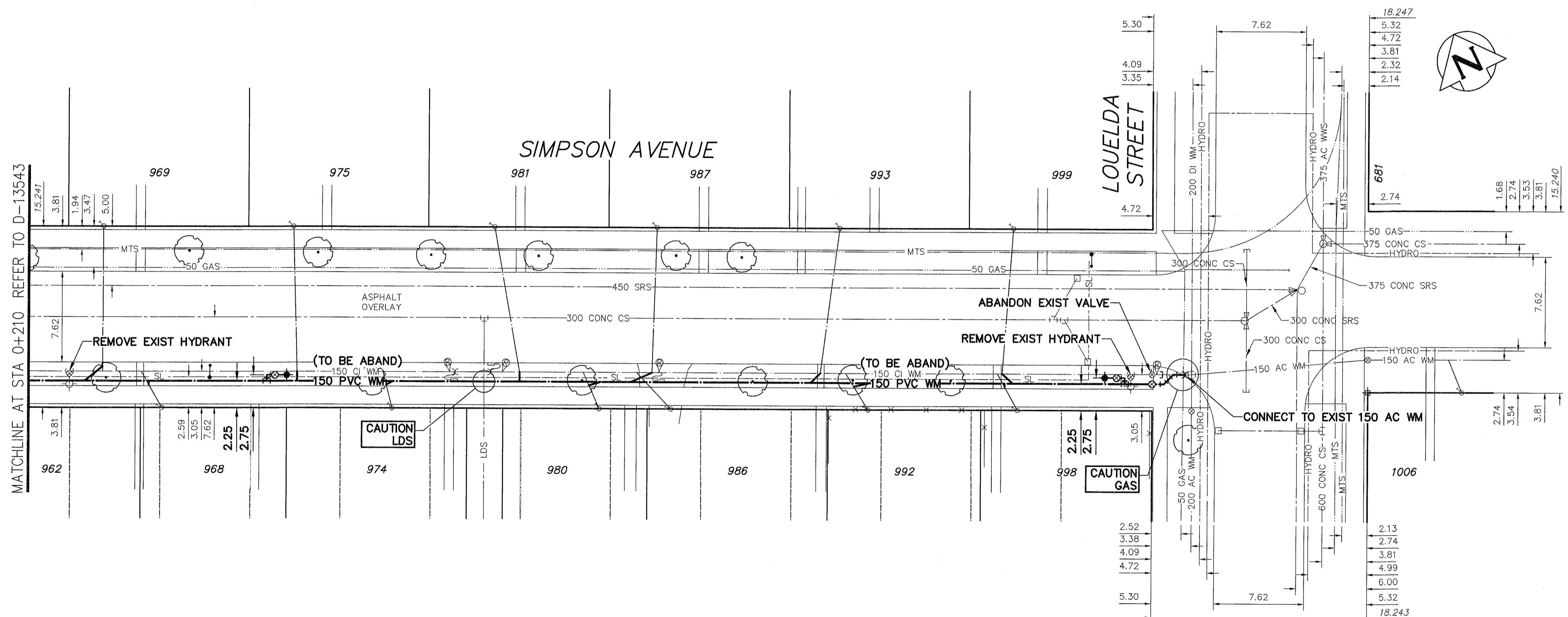


NOTE: CHAINAGES SHOWN ARE ALONG S. P. OF SIMPSON AVE

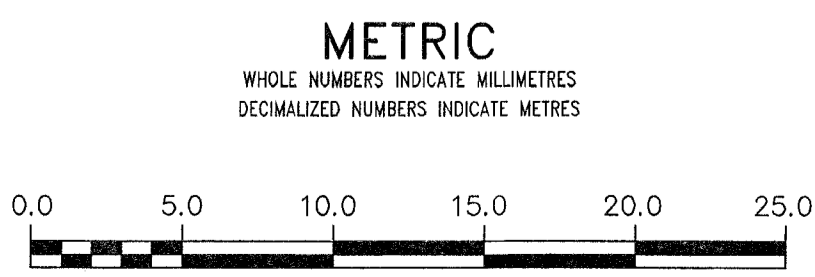
WATER SERVICE INFORMATION

ADDRESS	SIZE (mm) MATERIAL (STREET)	SIZE (mm) MATERIAL (PROP.)	SHORT & LONG MEASUREMENT	CORPORATION LOCATION	REMARKS
968 SIMPSON AV	20 CU	20	1.1 E W HSE LINE	8.08 E HYD	
RESIDENTIAL	CU	CU			
969 SIMPSON AV	20 CU	20	1.5 E W HSE LINE	4.82 E HYD	
RESIDENTIAL	CU	CU			
974 SIMPSON AV	20 CU	20	3.2 W E HSE LINE	0.76 W S/C	
RESIDENTIAL	CU	CU			
975 SIMPSON AV	20 CU	20	2.7 E W HSE LINE	21.28 E HYD	
RESIDENTIAL	CU	CU			
980 SIMPSON AV	20 CU	20	0.9 W E HSE LINE	44.14 W HYD	
RESIDENTIAL	CU	CU			
981 SIMPSON AV	20 CU	20	2.7 E W HSE LINE	2.13 E S/C	
RESIDENTIAL	CU	CU			
986 SIMPSON AV	20 CU	20	0.3 W W HSE LINE	49.99 E HYD	
RESIDENTIAL	CU	CU			
987 SIMPSON AV	20 CU	20	2.4 E W HSE LINE	38.31 W HYD	
RESIDENTIAL	CU	CU			
992 SIMPSON AV	20 CU	20	2.7 E W HSE LINE	21.95 W HYD	
RESIDENTIAL	CU	CU			
993 SIMPSON AV	20 CU	20	2.4 E W HSE LINE	24.08 W HYD	
RESIDENTIAL	CU	CU			
998 SIMPSON AV	20 CU	20	1.5 E W HSE LINE	8.84 W HYD	
RESIDENTIAL	CU	CU			
999 SIMPSON AV	20 CU	20	2.9 E W HSE LINE	8.69 W HYD	
RESIDENTIAL	CU	CU			
1006 SIMPSON AV	20 CU	20	1.8 E W HSE LINE	65.23 W HYD	
RESIDENTIAL	CU	CU			

NOTE: REPLACE ALL EXISTING LEAD SERVICES FROM THE PROPOSED WATERMAIN TO PROPERTY LINE. RECONNECT ALL OTHER SERVICES UNLESS NOTED. LOCATION OF WATER SERVICES SHOWN ON DRAWINGS ARE APPROXIMATE. THE CONTRACTOR SHALL FIELD LOCATE ALL WATER SERVICES PRIOR TO CONSTRUCTION.



MATCHLINE AT STA 0+210 REFER TO D-13543



WARNING
IF POWER EQUIPMENT OR EXPLOSIVES ARE TO BE USED FOR EXCAVATION ON THIS PROJECT THE CONTRACTOR MUST:
1) NOTIFY THE GAS COMPANY OF THE PROPOSED LOCATION OF EXCAVATION.
2) TAKE PRECAUTION TO AVOID DAMAGE TO GAS COMPANY INSTALLATIONS.
SEE PROVINCIAL REGULATION 210/72 FOR DETAILS

LOCATION APPROVED UNDERGROUND STRUCTURES
SUPV. I/J/G STRUCTURES COMMITTEE DATE
NOTE: LOCATION OF UNDERGROUND STRUCTURES AS SHOWN ARE BASED ON THE BEST INFORMATION AVAILABLE BUT NO GUARANTEE IS GIVEN THAT ALL EXISTING UTILITIES ARE SHOWN OR THAT THE GIVEN LOCATIONS ARE EXACT. CONFIRMATION OF EXISTENCE AND EXACT LOCATION OF ALL SERVICES MUST BE OBTAINED FROM THE INDIVIDUAL UTILITIES BEFORE PROCEEDING WITH CONSTRUCTION.

B.M. 28-056 888608-S.W. Cor. Conso Ave. & Besant St., Tbt. on top of 0.25 m dia x 2.4 m iron pipe in Valve Box, 2.7 m N. of S.L. of Conso Ave. & 1.7 m E. of W.L. of Besant St.

CONSTRUCTION COMPLETION DATE:

NO.	ISSUED FOR TENDER	DATE	BY
0	ISSUED FOR TENDER	14/04/07	GSK
A	PRELIMINARY	14/03/28	GSK

AECOM

DESIGNED BY GK CHECKED BY [Signature]
DRAWN BY JP APPROVED BY [Signature]
SCALE: HORIZONTAL 1:250 VERTICAL 1:50
DATE 2014 04 07

ENGINEER'S SEAL
PROVINCE OF MANITOBA
14/04/08
B. T. WEBER
REGISTERED ENGINEER
CONSULTANT DRAWING NUMBER C-1002

THE CITY OF WINNIPEG
WATER AND WASTE DEPARTMENT
ENGINEERING DIVISION

2014 WATER RENEWALS
CONTRACT 1
SIMPSON AVENUE
95m WEST OF LOUELDA STREET
TO LOUELDA STREET

SHEET 3 OF 13
CITY DRAWING NUMBER D-13544

AECOM
Certificate of Authorization
AECOM Canada Ltd.
No. 4671 Date: 2014/04/07

ALL VALVES TO BE COUNTER-CLOCKWISE TO CLOSE (RED OPERATING NUT)