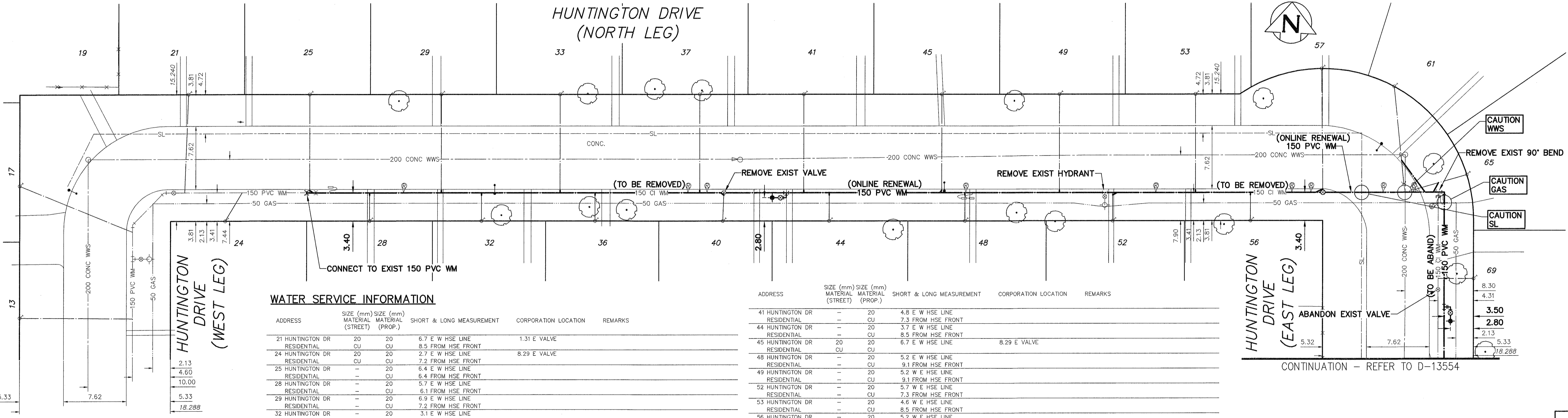


NOTE: CHAINAGES SHOWN ARE ALONG S. P. OF HUNTINGTON DR (N LEG)



**WATER SERVICE INFORMATION**

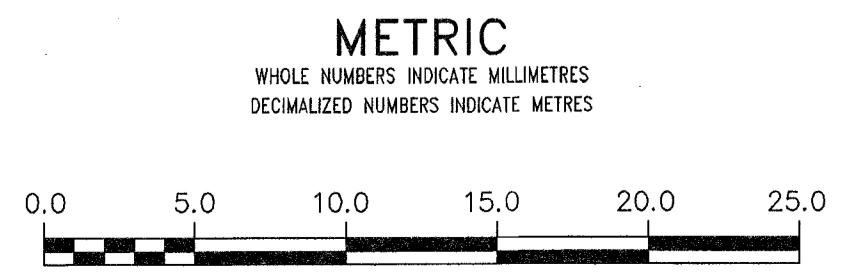
ADDRESS	SIZE (mm) MATERIAL (STREET)	SIZE (mm) MATERIAL (PROP.)	SHORT & LONG MEASUREMENT	CORPORATION LOCATION	REMARKS
21 HUNTINGTON DR RESIDENTIAL	20 CU	20 CU	6.7 E W HSE LINE 8.5 FROM HSE FRONT	1.31 E VALVE	
24 HUNTINGTON DR RESIDENTIAL	20 CU	20 CU	2.7 E W HSE LINE 7.2 FROM HSE FRONT	8.29 E VALVE	
25 HUNTINGTON DR RESIDENTIAL	20 CU	20 CU	6.4 E W HSE LINE 6.4 FROM HSE FRONT		
28 HUNTINGTON DR RESIDENTIAL	20 CU	20 CU	5.7 E W HSE LINE 6.1 FROM HSE FRONT		
29 HUNTINGTON DR RESIDENTIAL	20 CU	20 CU	6.9 E W HSE LINE 7.2 FROM HSE FRONT		
32 HUNTINGTON DR RESIDENTIAL	20 CU	20 CU	3.1 E W HSE LINE 6.4 FROM HSE FRONT		
33 HUNTINGTON DR RESIDENTIAL	20 CU	20 CU	6.0 W E HSE LINE 6.7 FROM HSE FRONT		
36 HUNTINGTON DR RESIDENTIAL	20 CU	20 CU	2.4 E W HSE LINE 6.0 FROM HSE FRONT		
37 HUNTINGTON DR RESIDENTIAL	20 CU	20 CU	3.7 W E HSE LINE 7.9 FROM HSE FRONT		
40 HUNTINGTON DR RESIDENTIAL	20 CU	20 CU	3.1 W E HSE LINE 6.1 FROM HSE FRONT		

ADDRESS	SIZE (mm) MATERIAL (STREET)	SIZE (mm) MATERIAL (PROP.)	SHORT & LONG MEASUREMENT	CORPORATION LOCATION	REMARKS
41 HUNTINGTON DR RESIDENTIAL	20 CU	20 CU	4.8 E W HSE LINE 7.3 FROM HSE FRONT		
44 HUNTINGTON DR RESIDENTIAL	20 CU	20 CU	3.7 E W HSE LINE 8.5 FROM HSE FRONT		
45 HUNTINGTON DR RESIDENTIAL	20 CU	20 CU	6.7 E W HSE LINE	8.29 E VALVE	
48 HUNTINGTON DR RESIDENTIAL	20 CU	20 CU	5.2 E W HSE LINE 9.1 FROM HSE FRONT		
49 HUNTINGTON DR RESIDENTIAL	20 CU	20 CU	5.2 W E HSE LINE 9.1 FROM HSE FRONT		
52 HUNTINGTON DR RESIDENTIAL	20 CU	20 CU	5.7 W E HSE LINE 7.3 FROM HSE FRONT		
53 HUNTINGTON DR RESIDENTIAL	20 CU	20 CU	4.6 W E HSE LINE 8.5 FROM HSE FRONT		
56 HUNTINGTON DR RESIDENTIAL	20 CU	20 CU	5.2 W E HSE LINE 7.0 OUT		
57 HUNTINGTON DR RESIDENTIAL	20 CU	20 CU	3.7 W HSE LINE 12.5 FROM HSE FRONT		
61 HUNTINGTON DR RESIDENTIAL	20 CU	20 CU	7.3 W E HSE LINE 11.6 FROM HSE FRONT	10.00 EWL HUNTINGTON	
65 HUNTINGTON DR RESIDENTIAL	20 CU	20 CU	7.0 N S HSE LINE 8.5 FROM HSE FRONT	10.50 EWL HUNTINGTON	

NOTE: REPLACE ALL EXISTING LEAD SERVICES FROM THE PROPOSED WATERMAIN TO PROPERTY LINE. RECONNECT ALL OTHER SERVICES UNLESS NOTED. LOCATION OF WATER SERVICES SHOWN ON DRAWINGS ARE APPROXIMATE. THE CONTRACTOR SHALL FIELD LOCATE ALL WATER SERVICES PRIOR TO CONSTRUCTION. RENEW SERVICES UNDER ROADWAY WITH LESS THAN 2.5 COVER.

**AECOM**  
Certificate of Authorization  
AECOM Canada Ltd.  
No. 4671 Date: 2014/04/07

ALL VALVES TO BE CLOCKWISE TO CLOSE (BLACK OPERATING NUT)



**WARNING**  
IF POWER EQUIPMENT OR EXPLOSIVES ARE TO BE USED FOR EXCAVATION ON THIS PROJECT THE CONTRACTOR MUST:  
1) NOTIFY THE GAS COMPANY OF THE PROPOSED LOCATION OF EXCAVATION.  
2) TAKE PRECAUTION TO AVOID DAMAGE TO GAS COMPANY INSTALLATIONS.  
SEE PROVINCIAL REGULATION 210/72 FOR DETAILS

**LOCATION APPROVED UNDERGROUND STRUCTURES**  
SUPV. U/G STRUCTURES COMMITTEE DATE  
NOTE:  
LOCATION OF UNDERGROUND STRUCTURES AS SHOWN ARE BASED ON THE BEST INFORMATION AVAILABLE BUT NO GUARANTEE IS GIVEN THAT ALL EXISTING UTILITIES ARE SHOWN OR THAT THE GIVEN LOCATIONS ARE EXACT. CONFIRMATION OF EXISTENCE AND EXACT LOCATION OF ALL SERVICES MUST BE OBTAINED FROM THE INDIVIDUAL UTILITIES BEFORE PROCEEDING WITH CONSTRUCTION.

B.M. 10-032 ELEV. 233.717m  
CONSTRUCTION COMPLETION DATE:

NO.	ISSUED FOR	DATE	BY
0	ISSUED FOR TENDER	14/04/07	GSK
A	PRELIMINARY	14/03/28	GSK

**AECOM**

DESIGNED BY: GK  
CHECKED BY: [Signature]  
DRAWN BY: JP  
APPROVED BY: [Signature]

SCALE: HORIZONTAL 1:250  
VERTICAL 1:50

RELEASED FOR CONSTRUCTION: [Signature]  
DATE: [Signature]

ENGINEER'S SEAL  
PROVINCE OF MANITOBA  
B. T. WEBER  
REGISTERED ENGINEER  
CONSULTANT DRAWING NUMBER: C-1011

**THE CITY OF WINNIPEG**  
WATER AND WASTE DEPARTMENT  
ENGINEERING DIVISION

2014 WATER RENEWALS  
CONTRACT 1  
HUNTINGTON DRIVE (NORTH LEG)  
HUNTINGTON DRIVE (WEST LEG) TO  
HUNTINGTON DRIVE (EAST LEG)

SHEET 12 OF 13  
CITY DRAWING NUMBER: D-13553