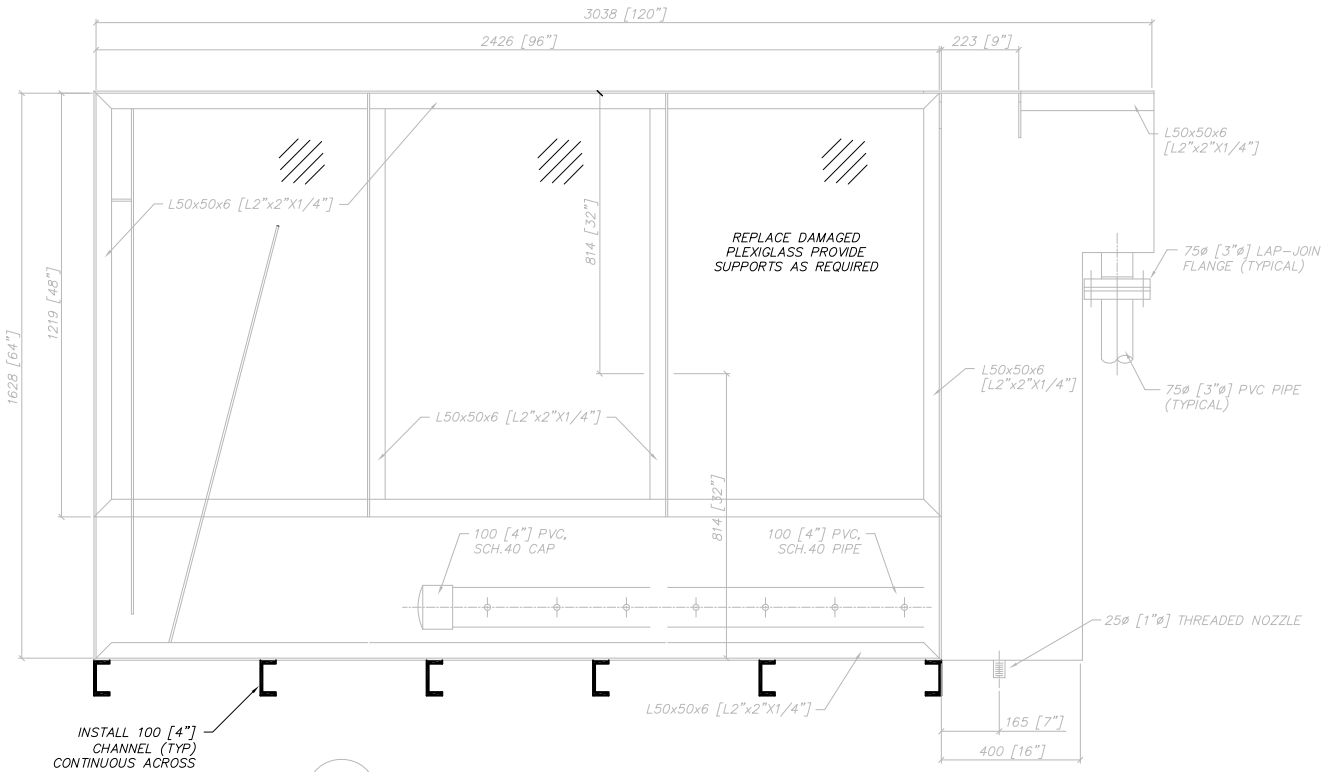
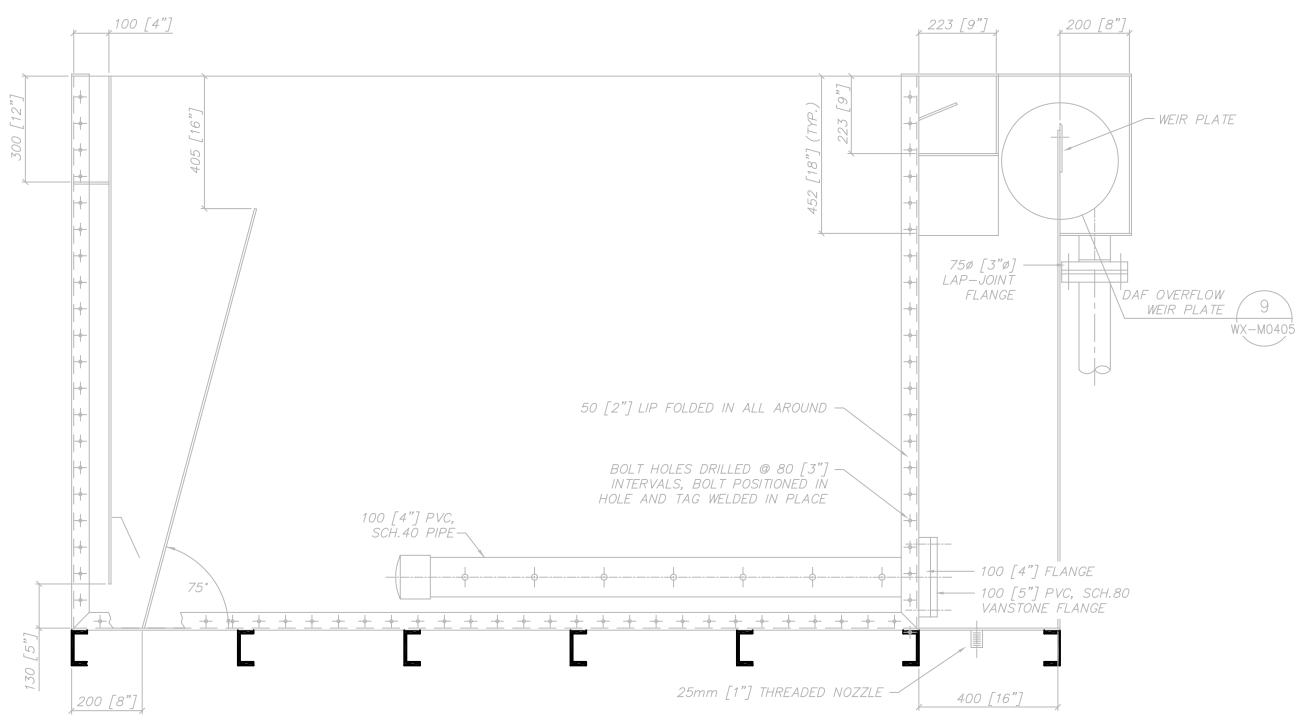


1 PLAN  
1:10



A SECTION  
1:10



B SECTION  
1:10

- NOTES:**
1. ALL WELDS CONTINUOUS.
  2. ALL PLATES FOR OUTSIDE WALLS AND BASE TO BE MARINE GRADE ALUMINUM 3mm [1/8"] THICKNESS.
  3. ALL PLATE FOR PARTITIONS TO BE MARINE GRADE ALUMINUM 2mm [3/32"] THICK.
  4. IMPERIAL MEASUREMENTS ARE ROUNDED TO THE NEAREST INCH.
  5. ALL CORRODED OR DAMAGED FASTENERS TO BE REPLACED.

B.M. ELEV.			
CONSTRUCTION COMPLETION DATE: YYYY MM DD			
0	ISSUED FOR QUOTATION	14/03/27	JBC
NO.	REVISIONS	DATE	BY

**CH2MHILL.**

DESIGNED BY	KG	CHECKED BY	BW
DRAWN BY	JBC	APPROVED BY	BW
SCALE:		RELEASED FOR CONSTRUCTION	
HORIZONTAL	1:50		
VERTICAL			
DATE	2014 03 27	DATE	
PLOT DATE:	2014 03 27		

ENGINEER'S SEAL	
CONSULTANT DRAWING NUMBER	WX-M0403

**THE CITY OF WINNIPEG**  
**Winnipeg**  
 WATER AND WASTE DEPARTMENT  
 ENGINEERING DIVISION

CITY OF WINNIPEG WATER TREATMENT RESEARCH AND PROCESS OPTIMIZATION FACILITY  
 PROCESS MECHANICAL  
 DISSOLVED AIR FLOTATION UNIT  
 PLAN AND SECTIONS

SHEET X OF X  
 CITY DRAWING NUMBER  
 1-0601X-M0007-001-00