

RACK 1.1

140 CPS 114 20	140 CPU 671 60	140 CRP 312 00	140 DRA 840 00	140 DRA 840 00	140 DAI 540 00	140 DAI 540 00	140 AVI 030 00	140 AVI 030 00	140 AVI 030 00	140 AVI 030 00	140 AVI 030 00	140 AVI 030 00	140 AVI 030 00	140 XBE 100 00	
			16 POINT	16 POINT	16 POINT	16 POINT	8 POINT	8 POINT	8 POINT	8 POINT	8 POINT	8 POINT	8 POINT		
			%M1- %M16	%M17- %M32	%I1- %I16	%I17- %I32	%IW1- %IW9	%IW10- %IW18	%IW19- %IW27	%IW28- %IW36	%IW37- %IW45	%IW46- %IW54	%IW55- %IW63		
SLOT 1	SLOT 2	SLOT 3	SLOT 4	SLOT 5	SLOT 6	SLOT 7	SLOT 8	SLOT 9	SLOT 10	SLOT 11	SLOT 12	SLOT 13	SLOT 14	SLOT 15	SLOT 16

140 XCA 717 01

RACK 1.2

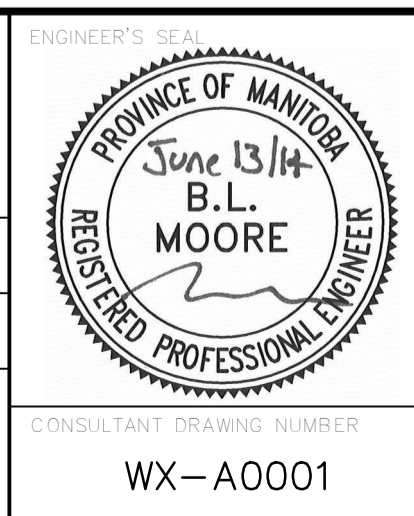
140 CPS 114 20	140 ACO 020 00	140 ACO 020 00	140 ACO 020 00												140 XBE 100 00
	4 POINT	4 POINT	4 POINT												
	%MW1- %MW4	%MW5- %MW8	%MW9- %MW12												
SLOT 1	SLOT 2	SLOT 3	SLOT 4												SLOT 16

CP-X10 PLC RACK LAYOUT



B.M. ELEV.			
CONSTRUCTION COMPLETION DATE: YYYY MM DD			
NO.	REVISIONS	DATE	BY
2	ISSUED FOR TENDER	14/06/13	BLM
1	REVISED LAYOUT	14/05/15	BLM
0	ISSUED FOR TENDER	14/05/01	BLM

CH2MHILL.			
DESIGNED BY	BM	CHECKED BY	BM
DRAWN BY	SCK	APPROVED BY	
SCALE:	NTS	RELEASED FOR CONSTRUCTION	
HORIZONTAL			
VERTICAL			
DATE	2014 06 12	DATE	



THE CITY OF WINNIPEG
WATER AND WASTE DEPARTMENT
ENGINEERING DIVISION

Winnipeg

CITY OF WINNIPEG WATER TREATMENT RESEARCH AND PROCESS OPTIMIZATION FACILITY
AUTOMATION
CP-X10 PLC RACK LAYOUT

CONSULTANT DRAWING NUMBER: WX-A0001

SHEET OF X
CITY DRAWING NUMBER: 1-0601X-A0001-001-00