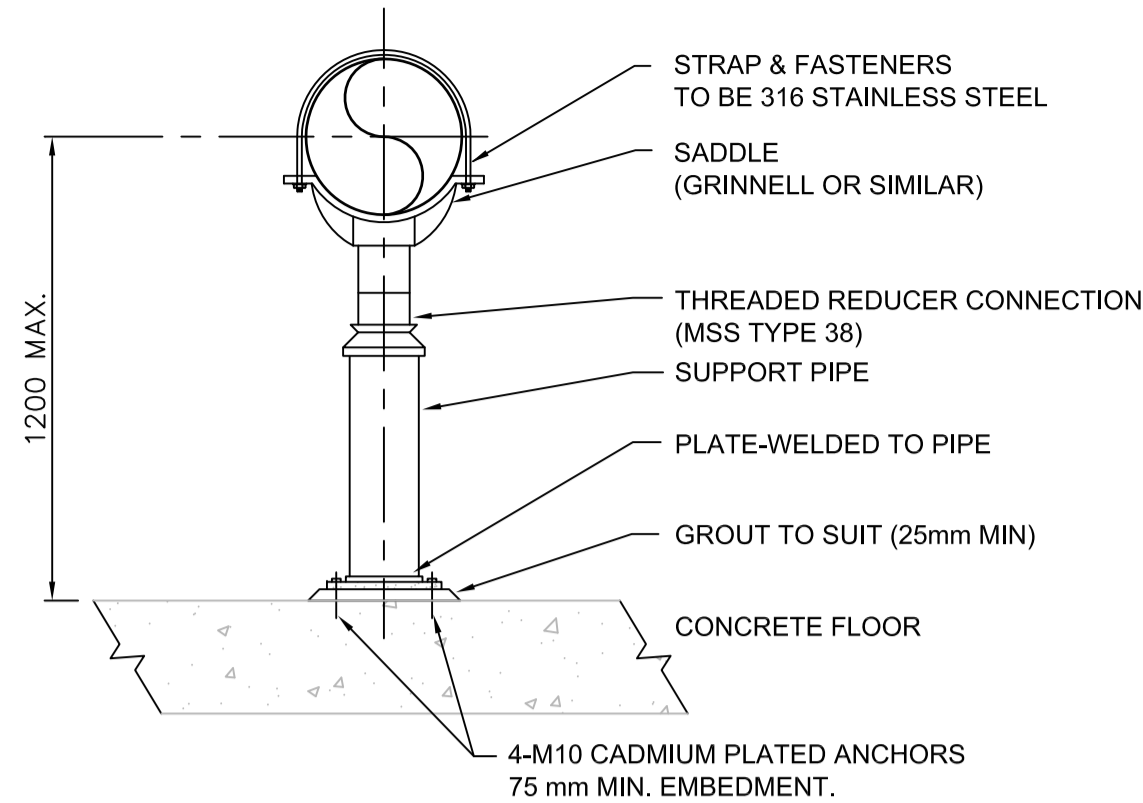


TABLE OF "LINK-SEAL" SERIES FOR STEEL PIPE
(FOR OTHER SIZES SEE SUPPLIER'S TABLES)

STEEL PIPE		WALL SLEEVE	LINK-SEAL	
SIZE	ACTUAL O.D.mm	I.D.mm	LINKS/ SEAL	MODEL NO.
13	21.3	52.5	4	LS-200-C
20	26.7	62.7	5	LS-275-C
25	33.4	62.7	5	LS-200-C
32	42.2	77.9	7	LS-275-C
38	48.3	90.1	5	LS-300-C
50	60.3	102.3	6	LS-300-C
75	89.0	128.2	8	LS-300-C
100	114.3	154.1	10	LS-300-C
125	141.3	202.7	6	LS-425-C
150	168.3	254.5	7	LS-400-C
200	219.1	304.8	12	LS-475-C

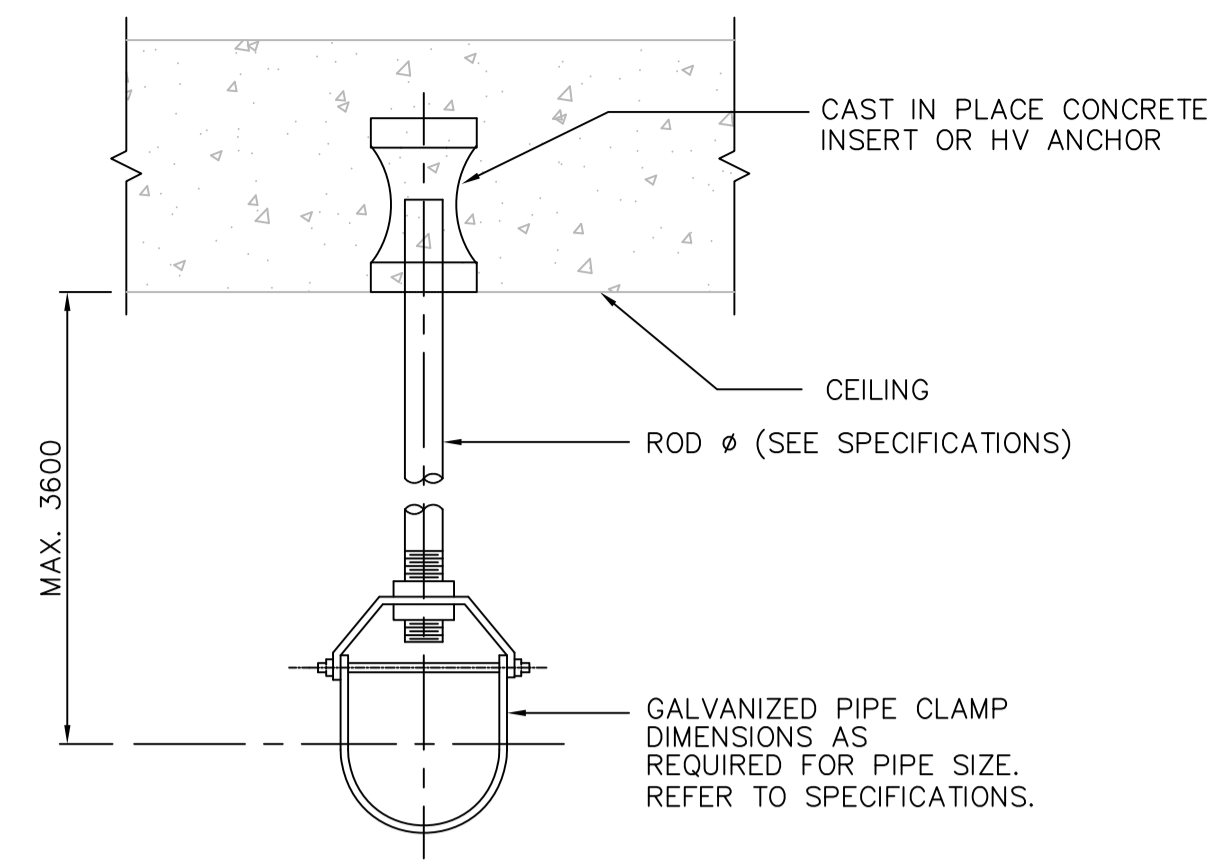
- APPLICATION NOTES:
1. CONCRETE WALL
 2. STEEL, STAINLESS STEEL, DUCTILE IRON, PVC OR FRP PIPE; NON-INSULATED.
 3. CONDITION
 - a) DRY TO DRY
 - b) INTERIOR TO UNDERGROUND

1 WALL/ FLOOR PENETRATION
NTS



PIPE SIZE (mm)	SUPPORT PIPE (mm)	PLATE SIZE (mm)
50	38	150 X 150 X 9.5
75	50	250 X 250 X 9.5
100	75	250 X 250 X 9.5
150	100	250 X 250 X 9.5
200	150	250 X 250 X 9.5
250	200	300 X 300 X 9.5

2 ADJUSTABLE PIPE SUPPORT WITH SADDLE
NTS

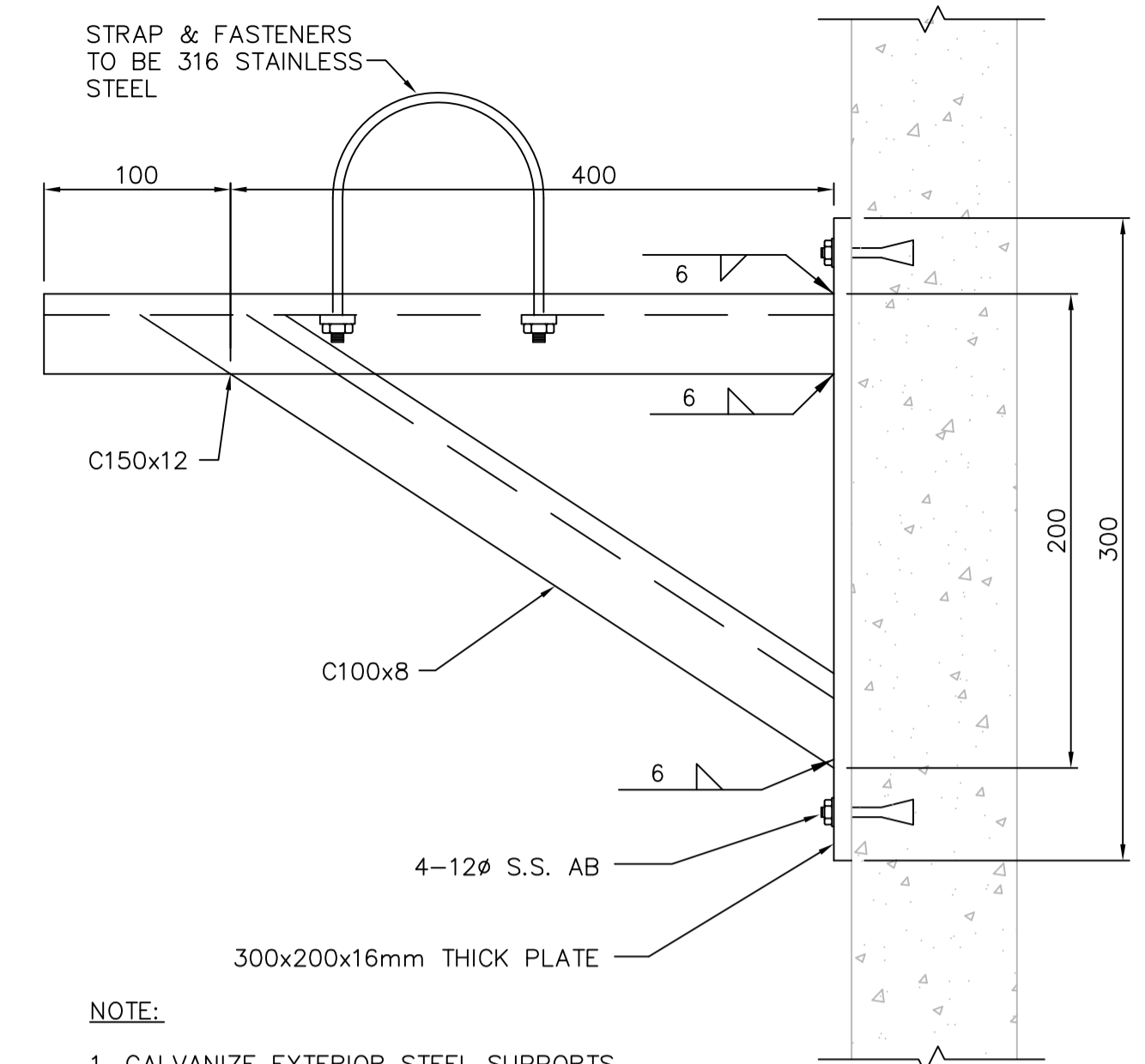


PIPE SIZE (mm)	ROD SIZE (mm)	MAX LOAD (kg)
25	9.4	280
50	9.4	280
75	12.0	510
100	16.0	800
150	20.0	1230
200	22.0	1710
250	25.0	2250
300	25.0	2250
350	25.0	2250
400	25.0	2250
450	25.0	2250
500	32.0	3630
600	32.0	3630

SAFETY FACTOR = 5

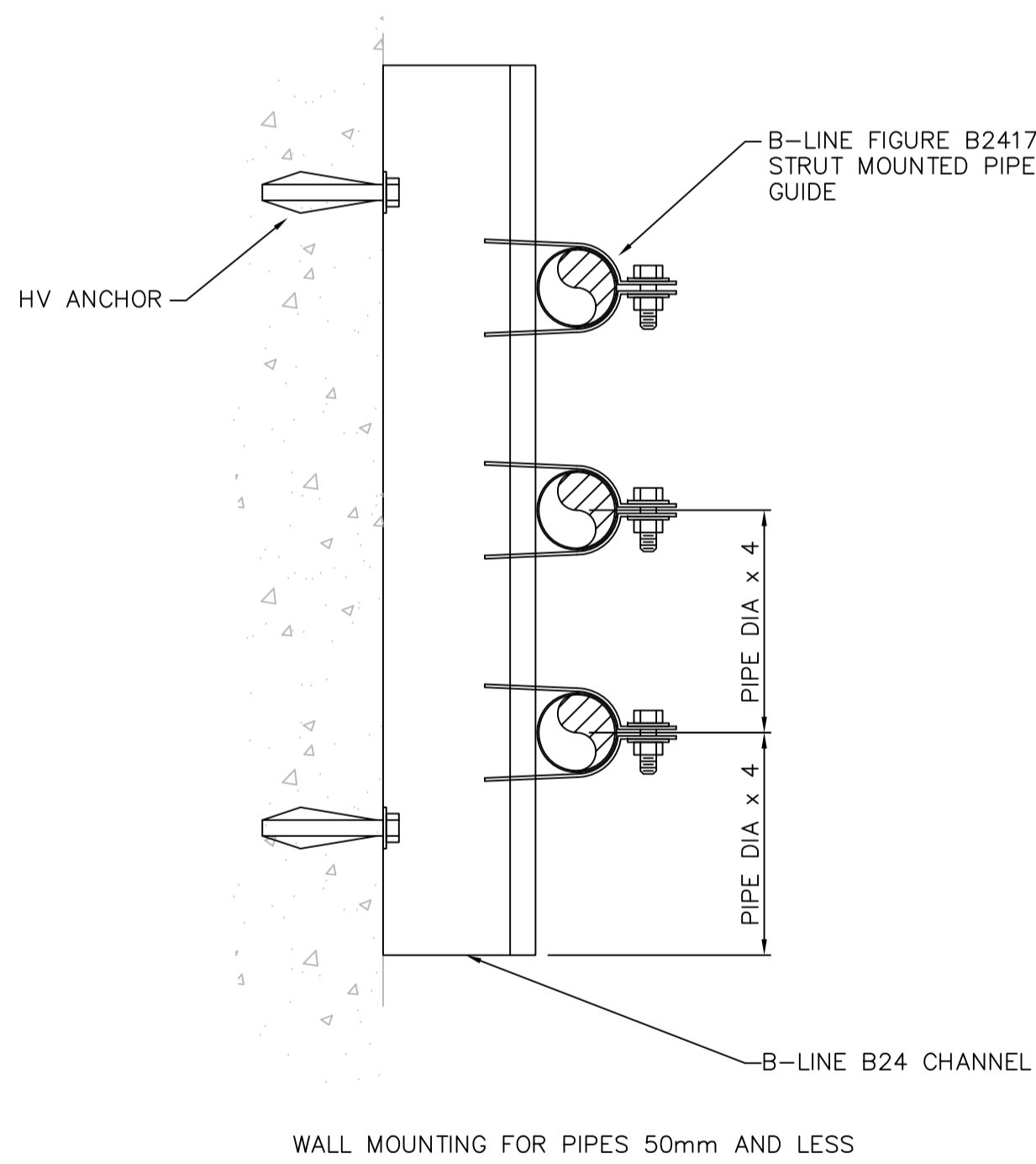
GRINNELL OR SIMILAR

3 SINGLE PIPE HANGER
NTS



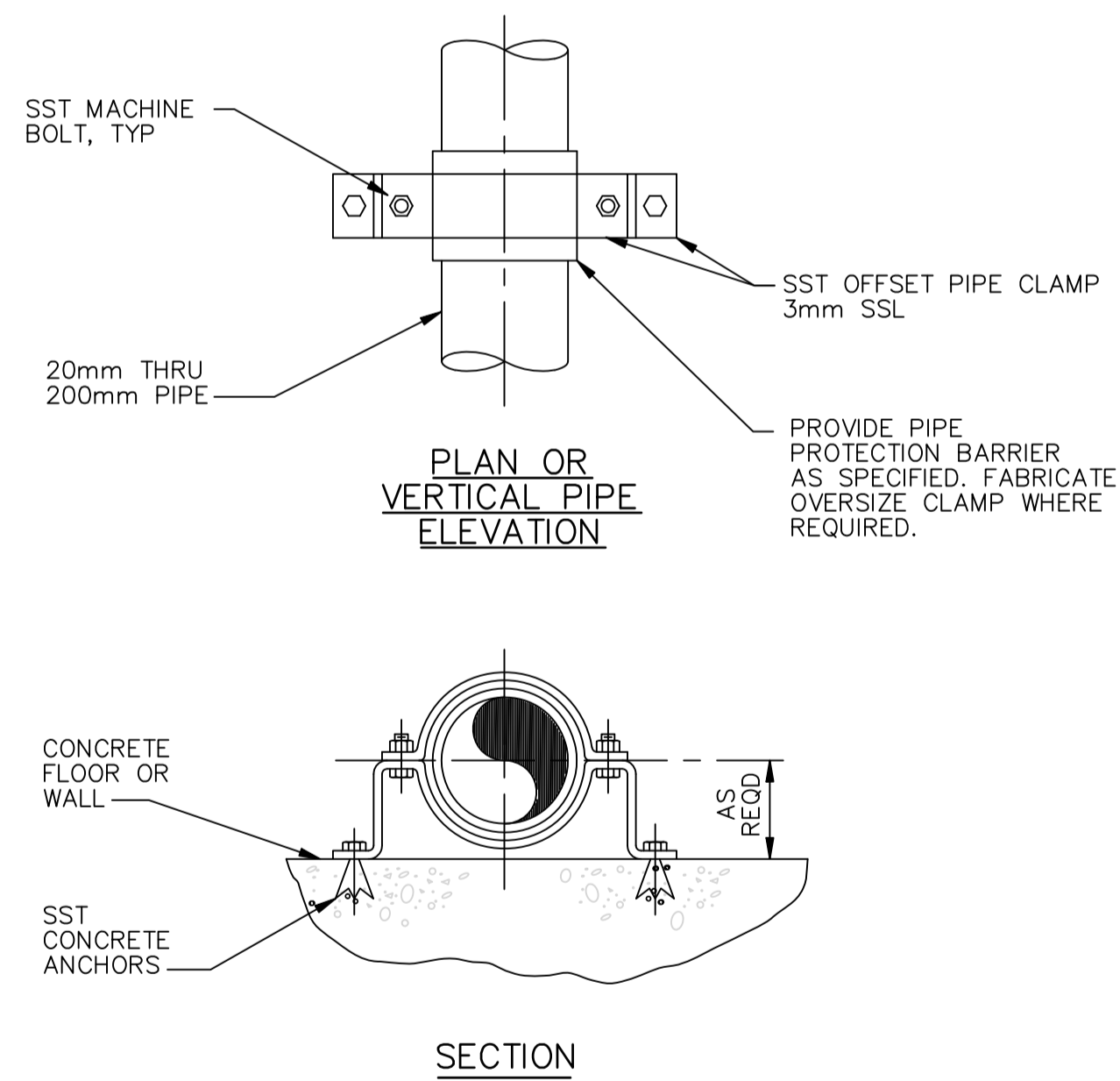
- NOTE:
1. GALVANIZE EXTERIOR STEEL SUPPORTS
 2. PROVIDE PIPE STRAPPING AS REQUIRED.

4 WALL MOUNTED PIPE SUPPORT
NTS



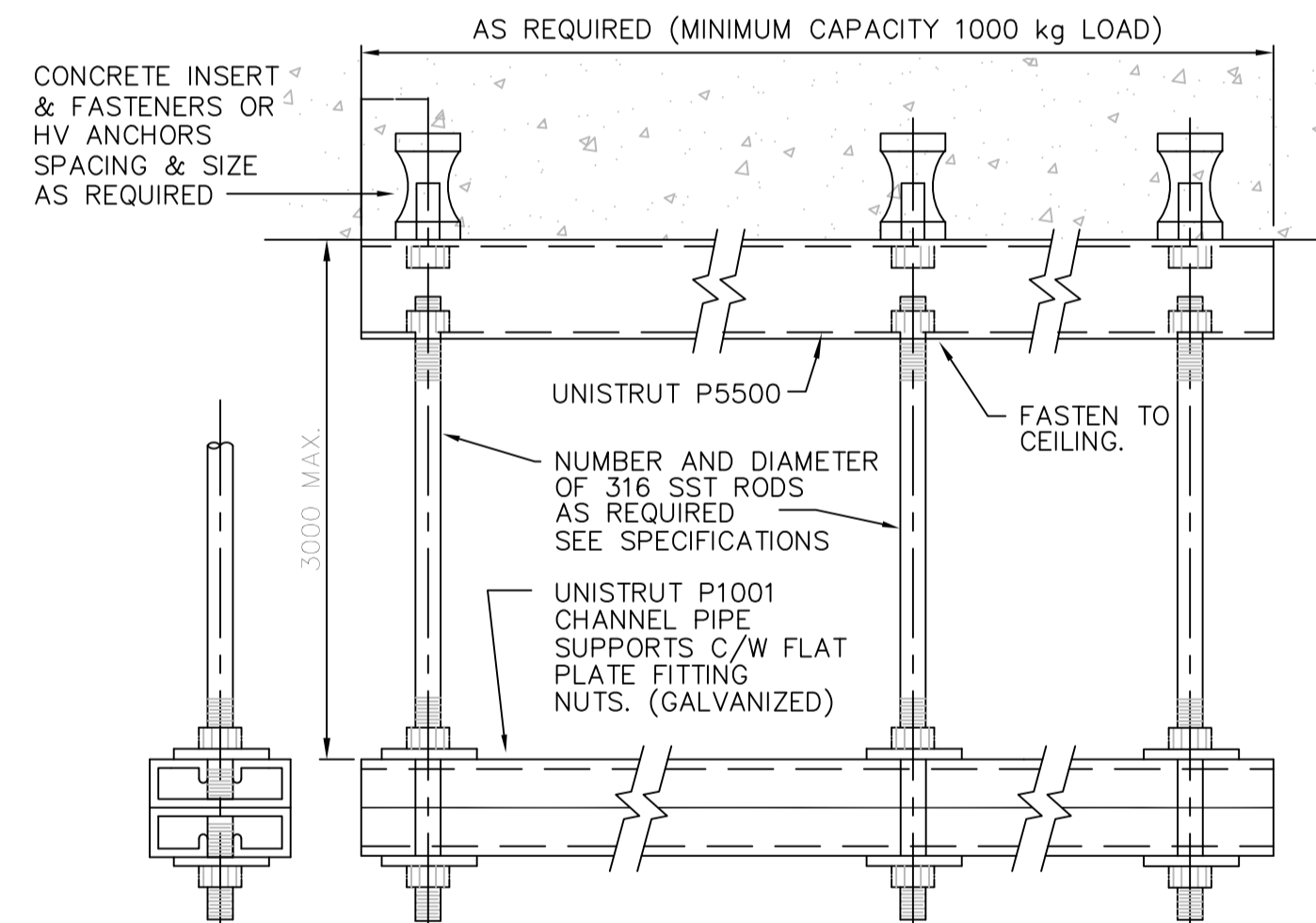
WALL MOUNTING FOR PIPES 50mm AND LESS

5 SMALL PIPING WALL MOUNTED PIPE SUPPORT
NTS



- NOTES:
- 1 ALL DIMENSIONS IN MILLIMETERS, UNLESS OTHERWISE NOTED.

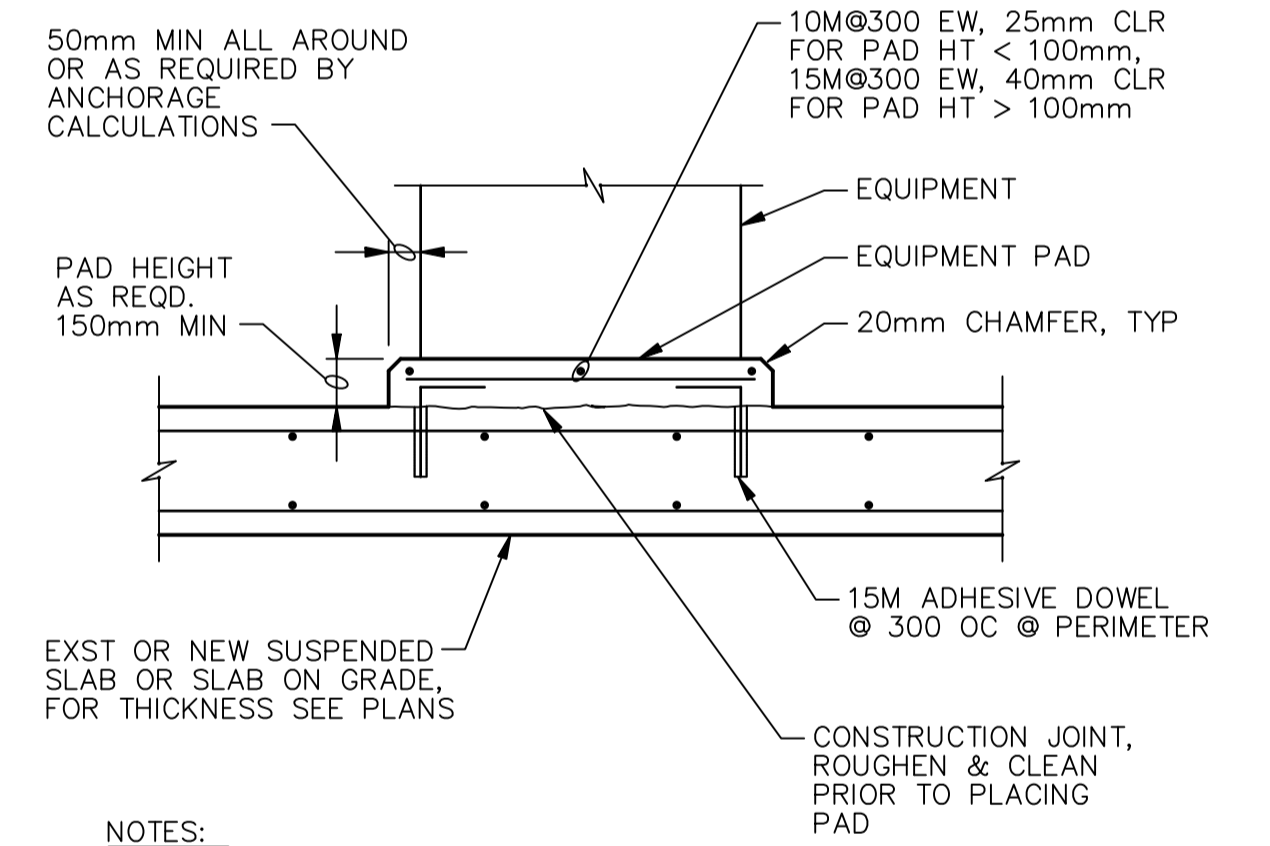
6 WALL MOUNTED PIPE SUPPORT
NTS



PIPE SIZES ON RACK SPACING	ROD SIZE REQUIRED	
	150mm AND SMALLER	300mm AND SMALLER
600mm SPACING	9mm	12mm
900mm SPACING	9mm	12mm
	12mm	19mm
1200mm SPACING	9mm	12mm
	12mm	16mm
	16mm	19mm

NOTE: 1. MAXIMUM SPACING = 1200mm 2. MINIMUM SAFETY FACTOR = 3

7 MULTI-PIPE HANGER
NTS



- NOTES:
1. WHEN ANCHORAGE OF EQUIPMENT TO PAD IS REQUIRED, USE CONCRETE ANCHORS SPECIFIED.
 2. CONCRETE PADS FOR ELECTRICAL EQUIPMENT SHALL BE 90mm HIGH, UNLESS NOTED OTHERWISE.

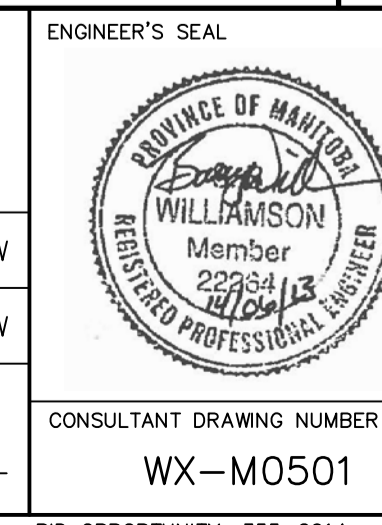
8 EQUIPMENT PAD
NTS



NO.	ISSUED FOR TENDER	DATE	BY
0	ISSUED FOR TENDER	14/06/13	JBC



DESIGNED BY	KG	CHECKED BY	BW
DRAWN BY	JBC	APPROVED BY	BW
SCALE:	HORIZONTAL NTS	RELEASED FOR CONSTRUCTION	
DATE	2014 06 13	DATE	



THE CITY OF WINNIPEG
WATER AND WASTE DEPARTMENT
ENGINEERING DIVISION

CITY OF WINNIPEG WATER TREATMENT RESEARCH AND PROCESS OPTIMIZATION FACILITY

PROCESS STANDARD DETAILS
SHEET 1 OF 2

SHEET X OF X
CITY DRAWING NUMBER
1-0601X-M0008-001-00

CONSULTANT DRAWING NUMBER
WX-M0501

FILE PATH: \\WINNIPEG\Pro\WinnipegCityof\462784\Waterworks\DWG\DLV\462784-M-0501.dwg