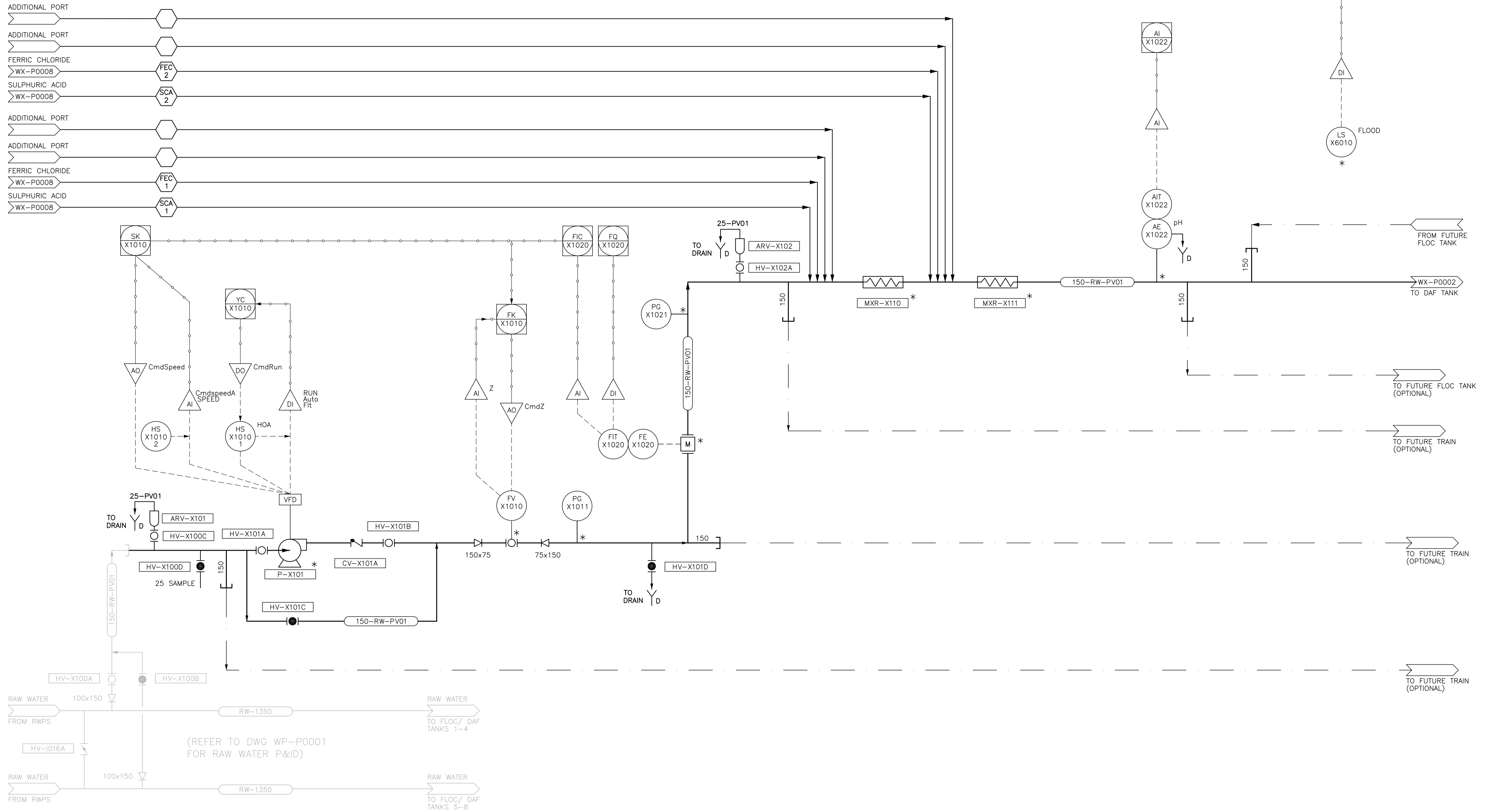


P-X101
RAW WATER PUMP

CONTROL: VFD
CAPACITY: 67.0 m³/hr
HEAD: 11.6m

MXR-X110/ X111
STATIC MIXERS

SIZE: 150mm
MATERIAL: PVC



NOTES:
* CITY OF WINNIPEG TO SUPPLY EQUIPMENT/ INSTRUMENTATION. CONTRACTOR TO INSTALL.
DRAIN LINES FROM PROCESS LINES: 25mm PV01



B.M. ELEV.	CONSTRUCTION COMPLETION DATE: YYYY MM DD		
DESIGNED BY	KG	CHECKED BY	BW
DRAWN BY	JBC	APPROVED BY	BW
SCALE: HORIZONTAL	NTS	RELEASED FOR CONSTRUCTION	
VERTICAL	-	DATE	2014 06 13
0 ISSUED FOR TENDER	14/06/13	JBC	
NO.	REVISIONS	DATE	BY

CH2MHILL

DESIGNED BY: KG
CHECKED BY: BW
DRAWN BY: JBC
APPROVED BY: BW
SCALE: HORIZONTAL: NTS, VERTICAL: -
DATE: 2014 06 13
PLOT DATE: 2014 06 13

ENGINEER'S SEAL
PROVINCE OF MANITOBA
WILLIAMSON
Member
22934
2013
CONSULTANT DRAWING NUMBER
WX-P0001

THE CITY OF WINNIPEG
WATER AND WASTE DEPARTMENT
ENGINEERING DIVISION

CITY OF WINNIPEG WATER TREATMENT RESEARCH AND PROCESS OPTIMIZATION FACILITY
PROCESS
RAW WATER PUMPING
PROCESS AND INSTRUMENTATION DIAGRAM

SHEET X OF X
CITY DRAWING NUMBER
1-0601X-P0001-001-00