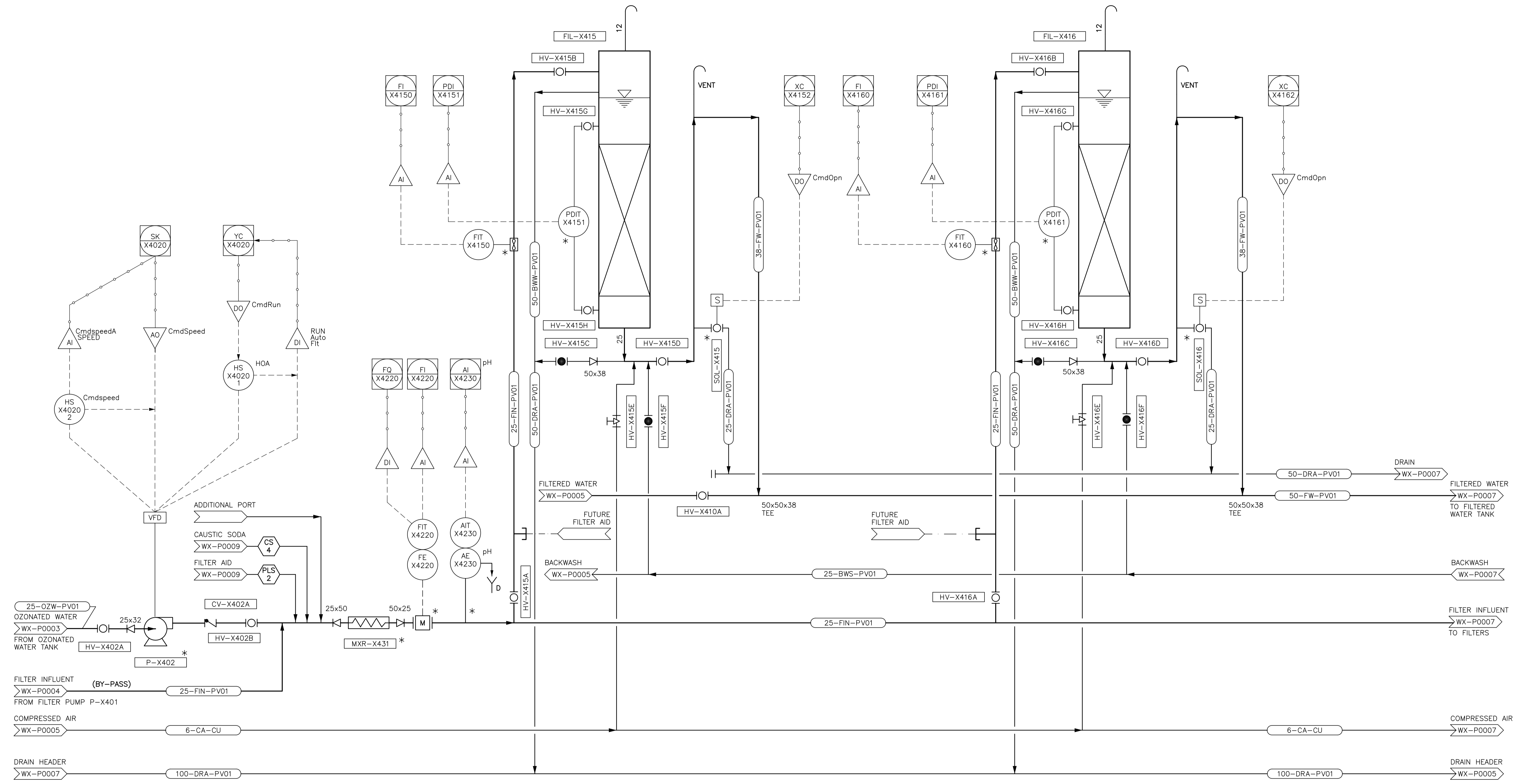


P-X402
FILTER PUMP
 CONTROL: VFD
 CAPACITY: 2.83 m³/h
 HEAD: 10.8m

FIL-X415/ X416
FILTER COLUMNS
 HEIGHT: 6.5m
 DIAMETER: 150mm

MXR-X431
STATIC MIXER
 SIZE: 50mm
 MATERIAL: PVC



NOTES:
 * CITY OF WINNIPEG TO SUPPLY EQUIPMENT/ INSTRUMENTATION.
 CONTRACTOR TO INSTALL.



B.M. ELEV.	CONSTRUCTION COMPLETION DATE: YYYY MM DD		
DESIGNED BY	KG	CHECKED BY	BW
DRAWN BY	JBC	APPROVED BY	BW
SCALE: HORIZONTAL	NTS	RELEASED FOR CONSTRUCTION	
VERTICAL	-	DATE	2014 06 13
ISSUED FOR TENDER	14/06/13	JBC	
NO.	REVISIONS	DATE	BY

CH2MHILL

CONSULTANT DRAWING NUMBER: **WX-P0006**

PROVINCE OF MANITOBA REGISTERED PROFESSIONAL ENGINEER

THE CITY OF WINNIPEG
 WATER AND WASTE DEPARTMENT
 ENGINEERING DIVISION

CITY OF WINNIPEG WATER TREATMENT RESEARCH AND PROCESS OPTIMIZATION FACILITY

PROCESS
 FILTER BANK B (SHEET 1 OF 2)
 PROCESS AND INSTRUMENTATION DIAGRAM

SHEET X OF X
 CITY DRAWING NUMBER
 1-0601X-P0005-01-00

FILE PATH: \\WINNIPEG\Pro\WinnipegCityof\462784\Waterworks\DMS\DLV\462784-P-0001.dwg