

FIL-X417/ X418
FILTER COLUMNS

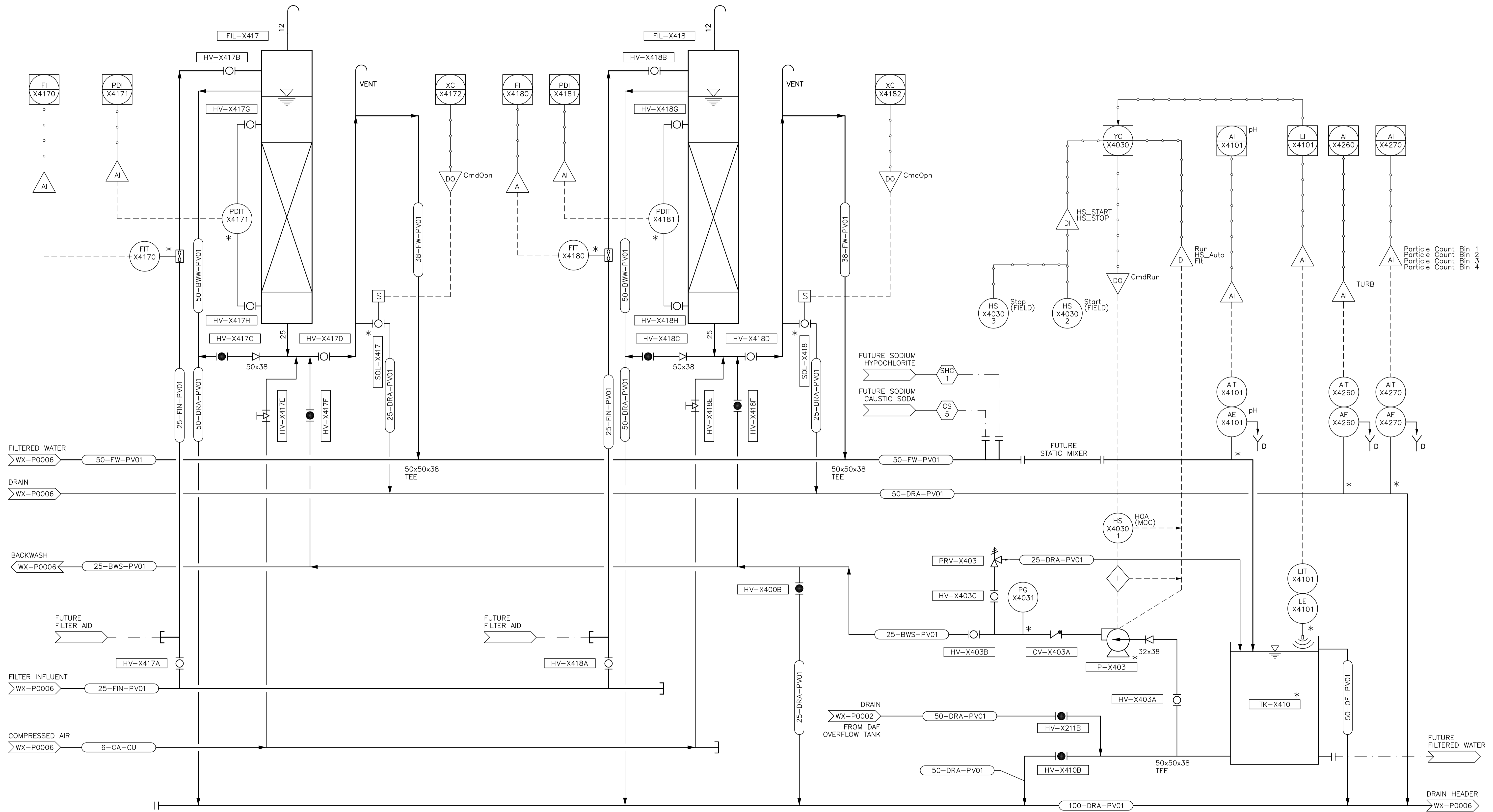
HEIGHT: 6.5m
 DIAMETER: 150mm

TK-X410
FILTERED WATER TANK

SIZE: 2.5m³
 DIAMETER: 1.5m
 HEIGHT: 1.5m

P-X403
B/W PUMP

CONTROL: FIXED SPEED
 CAPACITY: 0.91 m³/hr
 HEAD: 9.5m



NOTES:

* CITY OF WINNIPEG TO SUPPLY EQUIPMENT/ INSTRUMENTATION.
 CONTRACTOR TO INSTALL.



B.M. ELEV.			
CONSTRUCTION COMPLETION DATE: YYYY MM DD			
DESIGNED BY	KG	CHECKED BY	BW
DRAWN BY	JBC	APPROVED BY	BW
SCALE:	NTS	RELEASED FOR CONSTRUCTION	
HORIZONTAL			
VERTICAL			
0 ISSUED FOR TENDER	14/06/13	JBC	
NO.	REVISIONS	DATE	BY

CH2MHILL

DESIGNED BY: KG
 CHECKED BY: BW
 DRAWN BY: JBC
 APPROVED BY: BW
 SCALE: HORIZONTAL: NTS, VERTICAL: -
 RELEASED FOR CONSTRUCTION: 2014 06 13
 DATE: 2014 06 13
 PLOT DATE: 2014 06 13

ENGINEER'S SEAL

CONSULTANT DRAWING NUMBER: WX-P0007

THE CITY OF WINNIPEG
 WATER AND WASTE DEPARTMENT
 ENGINEERING DIVISION

CITY OF WINNIPEG WATER TREATMENT RESEARCH AND PROCESS OPTIMIZATION FACILITY
 PROCESS
 FILTER BANK B (SHEET 2 OF 2)
 PROCESS AND INSTRUMENTATION DIAGRAM

SHEET X OF X
 CITY DRAWING NUMBER
 1-0601X-P0005-002-00