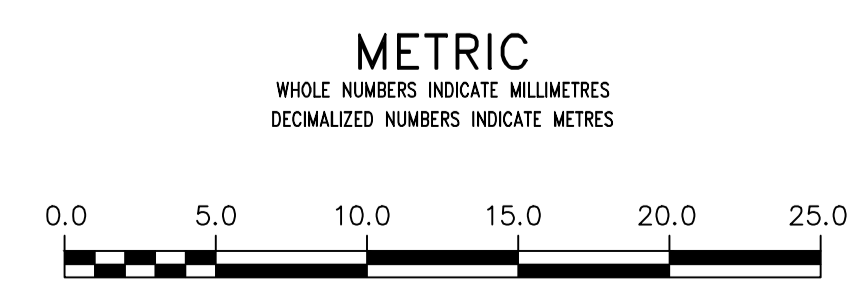
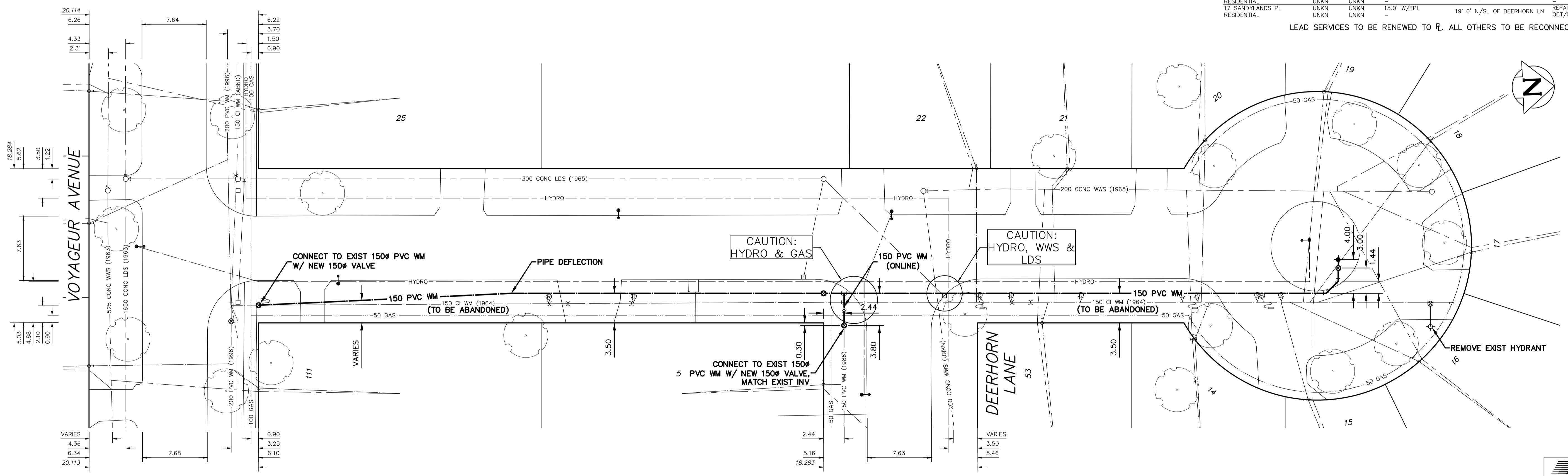


ADDRESS	SIZE (mm) MATERIAL (STREET)	SIZE (mm) MATERIAL (PROP.)	SHORT & LONG MEASUREMENT	CORP. LOCATION	REMARKS
22 SANDYLANDS PL RESIDENTIAL	UNKN	UNKN	12.0' S/NPL	59.0' N/SL OF DEERHORN LN	NO INFO ON FILE
53 DEERHORN LN RESIDENTIAL	UNKN	UNKN	UNKNOWN	UNKNOWN	NO INFO ON FILE
21 SANDYLANDS PL RESIDENTIAL	UNKN	UNKN	30.0' N/SPL	UNKNOWN	NO INFO ON FILE
20 SANDYLANDS PL RESIDENTIAL	UNKN	UNKN	9.5m S NPL	148.0' N/SL OF DEERHORN LN	OCT20/02 IN FOR DIG OUT CAN NOT OPERATE BOX/435/AF/TMS
14 SANDYLANDS PL RESIDENTIAL	UNKN	UNKN	25.0' N/SPL	150.0' N/SL OF DEERHORN LN	NO INFO ON FILE
15 SANDYLANDS PL RESIDENTIAL	UNKN	UNKN	10.0' N/SPL	178.0' N/SL OF DEERHORN LN	NO INFO ON FILE
16 SANDYLANDS PL RESIDENTIAL	UNKN	UNKN	17.0' N/SPL	180.0' N/SL OF DEERHORN LN	NO INFO ON FILE
19 SANDYLANDS PL RESIDENTIAL	UNKN	UNKN	13.0' N/SPL	188.0' N/SL OF DEERHORN LN	NO INFO ON FILE
18 SANDYLANDS PL RESIDENTIAL	UNKN	UNKN	23.0' W/EPL	189.0' N/SL OF DEERHORN LN	NO INFO ON FILE
17 SANDYLANDS PL RESIDENTIAL	UNKN	UNKN	15.0' W/EPL	191.0' N/SL OF DEERHORN LN	REPAIRED 6" SEWER SEE SKETCH OCT/08/96 PERMIT#32859

NOTE: CHAINAGES SHOWN ARE ALONG CL OF SANDYLANDS PLACE ROW

SANDYLANDS PLACE

LEAD SERVICES TO BE RENEWED TO R. ALL OTHERS TO BE RECONNECTED



WARNING
IF POWER EQUIPMENT OR EXPLOSIVES ARE TO BE USED FOR EXCAVATION ON THIS PROJECT THE CONTRACTOR MUST:
1) NOTIFY THE GAS COMPANY OF THE PROPOSED LOCATION OF EXCAVATION.
2) TAKE PRECAUTION TO AVOID DAMAGE TO GAS COMPANY INSTALLATIONS.
SEE PROVINCIAL REGULATION 210/72 FOR DETAILS

LOCATION APPROVED UNDERGROUND STRUCTURES
SUPV. U/G STRUCTURES COMMITTEE DATE
NOTE:
LOCATION OF UNDERGROUND STRUCTURES AS SHOWN ARE BASED ON THE BEST INFORMATION AVAILABLE BUT NO GUARANTEE IS GIVEN THAT ALL EXISTING UTILITIES ARE SHOWN OR THAT THE GIVEN LOCATIONS ARE EXACT. CONFIRMATION OF EXISTENCE AND EXACT LOCATION OF ALL SERVICES MUST BE OBTAINED FROM THE INDIVIDUAL UTILITIES BEFORE PROCEEDING WITH CONSTRUCTION.

NO.	REVISIONS	DATE	BY	DATE	BY
2	BID OPPORTUNITY 382-2014	APRIL/14	P.R.		
1	DESIGN REVIEW W & W	APRIL/14	P.R.		

WSP 1600 BUFFALO PLACE WINNIPEG, MB, R3T 6B8 PHONE: 204-477-6650 FAX: 204-474-2864 WWW.WSPGROUP.COM

DESIGNED BY: P.R.	CHECKED BY: S.M.
DRAWN BY: R.H.	APPROVED BY: I.McK
SCALE: HORIZONTAL 1:250 VERTICAL 1:50	RELEASED FOR CONSTRUCTION S. COURNOYER, P. ENG
DATE: 2014 04 16	DATE: 2014 04 15

ENGINEER'S SEAL
PROVINCE OF MANITOBA REGISTERED PROFESSIONAL ENGINEER
I. G. McKINNON
CONSULTANT DRAWING NUMBER 141-13765-07

THE CITY OF WINNIPEG
WATER AND WASTE DEPARTMENT
ENGINEERING DIVISION
2014 WATERMAIN RENEWALS
SANDYLANDS PLACE
NL OF VOYAGEUR AVENUE TO
45M>NNL OF DEERHORN LANE
SHEET 1 OF 1
CITY DRAWING NUMBER D-13576