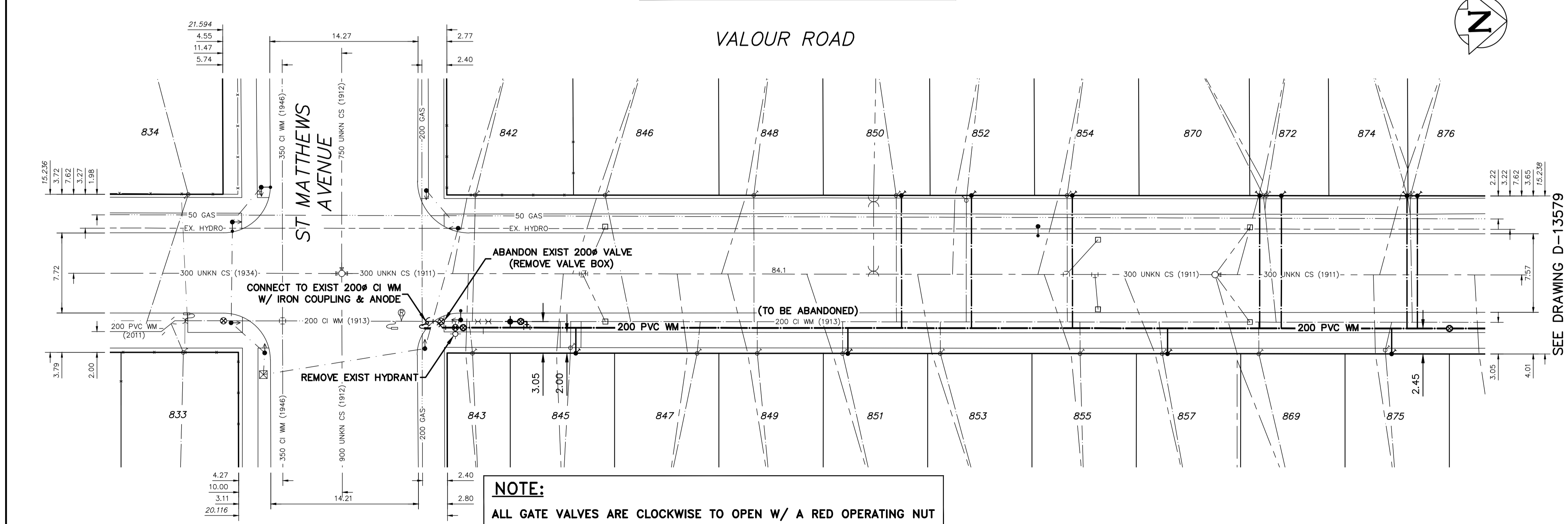


NOTE: CHAINAGES SHOWN ARE ALONG E. R. OF VALOUR RD

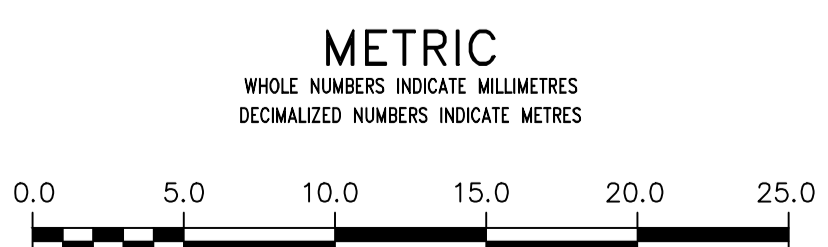


NOTE:
ALL GATE VALVES ARE CLOCKWISE TO OPEN W/ A RED OPERATING NUT

WATER SERVICE INFORMATION

ADDRESS	SIZE (mm) MATERIAL (STREET)	SIZE (mm) MATERIAL (PROP.)	SHORT & LONG MEASUREMENT	CORP. LOCATION	REMARKS
843 VALOUR RD RESIDENTIAL	12 CU	20 CU	8' N/SL	1' S SC	-
842 VALOUR RD RESIDENTIAL	20 CU	20 CU	8' N/SL	1' S SC	MAIN TAPPED OPP
845 VALOUR RD RESIDENTIAL	12 LEAD	12 LEAD	4.22m S/NLL	OPP SC	-
846 VALOUR RD RESIDENTIAL	20 LEAD	20 LEAD	4.5' N/SL	OPP SC	MAIN TAPPED OPP
847 VALOUR RD RESIDENTIAL	12 CU	12 CU	50' N/SL	1' N SC	-
848 VALOUR RD RESIDENTIAL	20 CU	20 CU	79' N/SL	OPP SC	-
849 VALOUR RD RESIDENTIAL	12 CU	12 CU	97' N/SL	OPP SC	-
850 VALOUR RD RESIDENTIAL	12 LEAD	12 LEAD	98' N/SL	OPP SC	-
851 VALOUR RD RESIDENTIAL	12 LEAD	12 LEAD	125' N/SL	OPP SC	-
850 VALOUR RD RESIDENTIAL	20 LEAD	20 LEAD	142' N/SL	OPP SC	-
853 VALOUR RD RESIDENTIAL	20 CU	20 CU	2' N/SL	OPP SC	-
852 VALOUR RD RESIDENTIAL	20 LEAD	20 LEAD	3.44m N/SLL	OPP SC	-
854 VALOUR RD RESIDENTIAL	20 LEAD	20 LEAD	49.86m N/SL	OPP SC	-
855 VALOUR RD RESIDENTIAL	12 CU	12 CU	196' N/SL	OPP SC	-
856 VALOUR RD RESIDENTIAL	12 CU	12 CU	141' N/SL	OPP SC	-
857 VALOUR RD RESIDENTIAL	12 LEAD	12 LEAD	200' N/SL	1' S SC	-
858 VALOUR RD RESIDENTIAL	20 LEAD	20 LEAD	226' N/SL	OPP SC	MAIN TAPPED OPP
859 VALOUR RD RESIDENTIAL	20 CU	20 CU	256.5' N/SL	OPP SC	-
870 VALOUR RD RESIDENTIAL	16 LEAD	12 LEAD	2' N/SL	4' N SC	4' N SC
871 VALOUR RD RESIDENTIAL	16 LEAD	12 LEAD	258' N/SL	4' N SC	4' N SC
872 VALOUR RD RESIDENTIAL	16 LEAD	12 LEAD	2' N/SL	4' N SC	4' N SC
873 VALOUR RD RESIDENTIAL	16 LEAD	12 LEAD	258' N/SL	4' N SC	4' N SC
874 VALOUR RD RESIDENTIAL	16 LEAD	12 LEAD	3.78m N/SLL	2.0' N SC	-
875 VALOUR RD RESIDENTIAL	16 LEAD	12 LEAD	56.48m S/SL	1' N SC	1' N SC
876 VALOUR RD RESIDENTIAL	16 LEAD	12 LEAD	OPP CENTRE BETWEEN HOUSES	1' N SC	1' N SC
877 VALOUR RD RESIDENTIAL	16 LEAD	12 LEAD	304' N/SL	1' N SC	1' N SC

LEAD SERVICES TO BE RENEWED TO R. ALL OTHERS TO BE RECONNECTED



WARNING
IF POWER EQUIPMENT OR EXPLOSIVES ARE TO BE USED FOR EXCAVATION ON THIS PROJECT THE CONTRACTOR MUST:
1) NOTIFY THE GAS COMPANY OF THE PROPOSED LOCATION OF EXCAVATION.
2) TAKE PRECAUTION TO AVOID DAMAGE TO GAS COMPANY INSTALLATIONS.
SEE PROVINCIAL REGULATION 210/72 FOR DETAILS

LOCATION APPROVED
UNDERGROUND STRUCTURES
SUPV. U/G STRUCTURES COMMITTEE DATE
NOTE:
LOCATION OF UNDERGROUND STRUCTURES AS SHOWN ARE BASED ON THE BEST INFORMATION AVAILABLE BUT NO GUARANTEE IS GIVEN THAT ALL EXISTING UTILITIES ARE SHOWN OR THAT THE GIVEN LOCATIONS ARE EXACT. CONFIRMATION OF EXISTENCE AND EXACT LOCATION OF ALL SERVICES MUST BE OBTAINED FROM THE INDIVIDUAL UTILITIES BEFORE PROCEEDING WITH CONSTRUCTION.

B.M. ELEV.			
CONSTRUCTION COMPLETION DATE: YYYY MM DD			
DESIGNED BY	P.R.		
CHECKED BY	S.M.		
DRAWN BY	R.H.		
APPROVED BY	I.McK.		
SCALE:			
HORIZONTAL	1:250		
VERTICAL	1:50		
RELEASED FOR CONSTRUCTION	S. COURNOYER, P. ENG		
DATE	2014 04 16		
DATE	2014 04 15		
NO.	REVISIONS	DATE	BY
2	BID OPPORTUNITY 382-2014	APRIL/14	P.R.
1	DESIGN REVIEW W & W	APRIL/14	P.R.

WSP 1600 BUFFALO PLACE
WINNIPEG, MB, R3T 6B8
PHONE: 204-477-6650
FAX: 204-474-2864
WWW.WSPGROUP.COM

ENGINEER'S SEAL
I. G. McKINNON
REGISTERED PROFESSIONAL ENGINEER

CONSULTANT DRAWING NUMBER
141-13765-09

THE CITY OF WINNIPEG
WATER AND WASTE DEPARTMENT
ENGINEERING DIVISION

2014 WATERMAIN RENEWALS

VALOUR ROAD
ST. MATTHEWS AVENUE TO
100M NNL OF ST. MATTHEWS AVENUE

SHEET 1 OF 3
CITY DRAWING NUMBER
D-13578