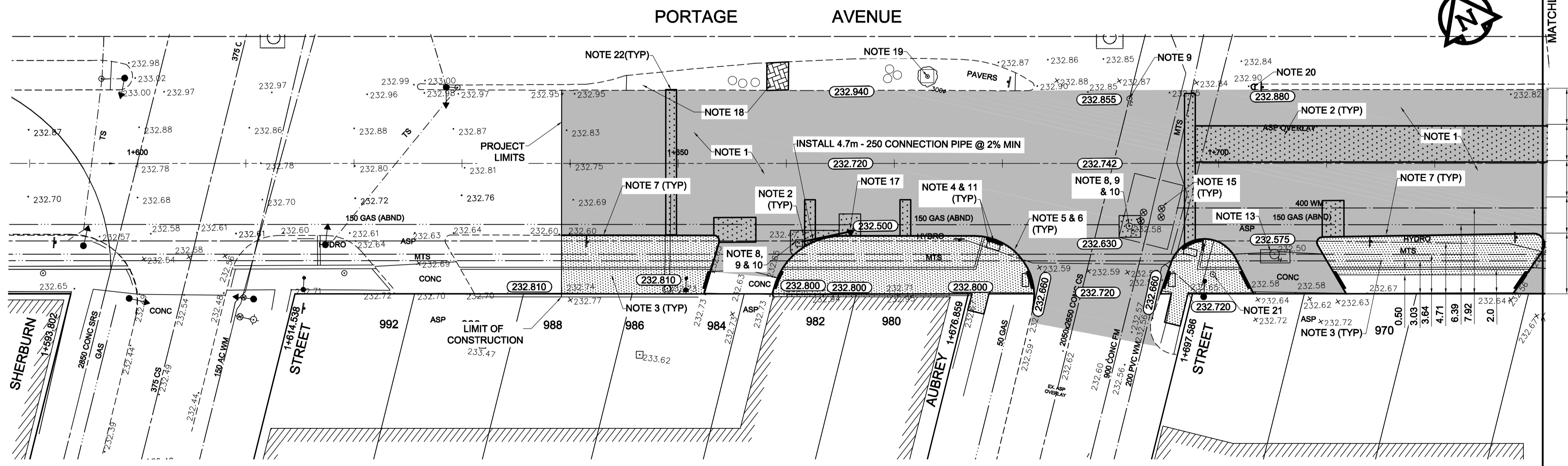


**SIDEWALK DETAIL 1**

**REFERENCE NOTES**

- PAVEMENT DIMENSIONS ARE TO BACK OF CURB
- BASELINE IS 12.0M NORTH OF SOUTH PROPERTY LINE
- PROPERTY LINES OBTAINED FROM THE CITY OF WINNIPEG L.B.I.S., AND NO SCALE FACTOR WAS APPLIED
- REFER TO AECOM FIELD BOOK NO. 4821, 4822 & 4823



FOR WORKS IN CLOSE PROXIMITY TO 900 FM AND 400 WATERMAIN, MEET ALL REQUIREMENTS AS OUTLINED IN E17.

- CONSTRUCTION NOTES:**
- PLANE EXISTING ASPHALT AND CONSTRUCT NEW ASPHALTIC PAVEMENT OVERLAY TYPE 1A (AVERAGE THICKNESS 85mm)
  - REMOVE EXISTING PAVEMENT AND CONSTRUCT NEW 200mm REINFORCED CONCRETE PAVEMENT c/w 85mm TYPE 1A ASPHALT OVERLAY
  - REMOVE EXISTING CONCRETE SIDEWALK AND CONSTRUCT NEW 100mm SIDEWALK c/w PAVING STONE BAND (SEE DETAIL 1)
  - RENEW EXISTING MONOLITHIC CURB RAMP (10mm HT. INTEGRAL)
  - CONSTRUCT NEW MODIFIED BARRIER CURB (150mm AVG. HT. REVEAL SEPARATE)
  - REMOVE EXISTING BARRIER CURB
  - RENEW EXISTING BARRIER CURB (100mm AVG. HT. REVEAL)
  - ADJUST EXISTING CATCH BASIN/MANHOLE TO GRADE
  - REMOVE EXISTING FRAME AND COVER AND PLACE NEW FRAME AND COVER (AP-004 AND AP-005)
  - INSTALL NEW CAST IRON RISER RING
  - INSTALL NEW DETECTABLE SURFACE WARNING TILES
  - ADJUST MTS MANHOLE FRAME AND COVER
  - ADJUST EXISTING MTS MANHOLE FRAME AND COVER
  - ADJUST EXISTING CURB STOP TO GRADE
  - INSTALL VALVE BOX EXTENSION
  - REMOVE EXISTING CATCHBASIN AND CURB INLET
  - INSTALL NEW CURB AND GUTTER INLET c/w CATCHPIT (SD-023) AND CONNECT TO EXISTING CATCHBASIN
  - REGRADE EXISTING PAVING STONES
  - REMOVE TREE STUMP BY OTHERS
  - RENEW BULLNOSE
  - ADJUST SIGNAL SERVICE BOX
  - REGRADE 0.5m WITH PAVING STONES

| EXISTING     | LEGEND - PLAN       | PROPOSED     | EXISTING          | LEGEND - PLAN | PROPOSED  | EXISTING | LEGEND - PROFILE  | PROPOSED |
|--------------|---------------------|--------------|-------------------|---------------|-----------|----------|-------------------|----------|
| 150mm W.M.   | WATERMAIN           | 150mm W.M.   | HYDRO             | M.T.S.        | C PROFILE | ×        | SOUTH/EAST GUTTER |          |
| 300mm L.D.S. | VALVE               | 300mm L.D.S. | CONCRETE          |               | ○         | ○        | MEDIAN GUTTER     |          |
| 250mm W.W.S. | LAND DRAINAGE SEWER | 250mm W.W.S. | ASPHALT           |               | ◇         | ◇        | N/W PROPERTY LINE |          |
| ○            | MANHOLE             | ●            | PROPERTY LINE     |               | ○         | ○        | S/E PROPERTY LINE |          |
| □            | CATCH BASIN         | ■            | SURVEY BAR        |               |           |          |                   |          |
| ▽            | CURB INLET          | ▼            | ELEVATION         | (5.750)       |           |          |                   |          |
| ▤            | BUILDING OUTLINE    | ⊕            | TREE              |               |           |          |                   |          |
| ▥            | CULVERT             | ▬            | SIDEWALK RAMP     |               |           |          |                   |          |
| ▧            | GAS                 | ▬            | CONCRETE SIDEWALK |               |           |          |                   |          |
|              |                     |              | FENCE             |               |           |          |                   |          |

**LOCATION APPROVED UNDERGROUND STRUCTURES**

SUPV. U/G STRUCTURES COMMITTEE DATE

**NOTE:**  
LOCATION OF UNDERGROUND STRUCTURES AS SHOWN ARE BASED ON THE BEST INFORMATION AVAILABLE BUT NO GUARANTEE IS GIVEN THAT ALL EXISTING UTILITIES ARE SHOWN OR THAT THE GIVEN LOCATIONS ARE EXACT. CONFIRMATION OF EXISTENCE AND EXACT LOCATION OF ALL SERVICES MUST BE OBTAINED FROM THE INDIVIDUAL UTILITIES BEFORE PROCEEDING WITH CONSTRUCTION.

**B.M. 89R581**  
ELEV. 232.540

S.W. corner Portage Ave. & Sprague St., Tbt. on pipe, 4.8m E. of W.L. Sprague St. produced from the W. along the S.L. of Portage Ave.

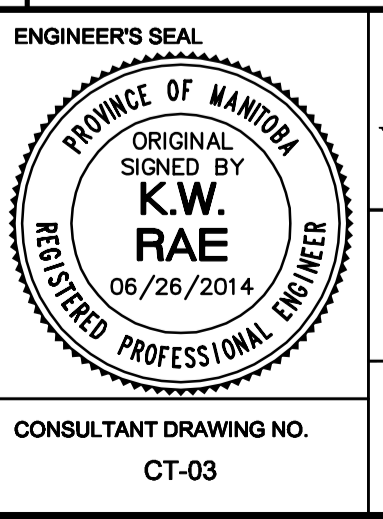
**AECOM**

DESIGNED BY: BC  
DRAWN BY: RT, PB  
HOR. SCALE: 1:250  
VERTICAL: 1:10

CHECKED BY: KWR  
APPROVED BY:  
RELEASED FOR CONSTRUCTION BY:

0 ISSUED FOR TENDER 2014/06/26 KWR  
NO. REVISIONS DATE BY

DATE 2014/06/26 DATE



**METRIC**  
WHOLE NUMBERS INDICATE MILLIMETRES  
DECIMALIZED NUMBERS INDICATE METRES

**THE CITY OF WINNIPEG**  
PUBLIC WORKS DEPARTMENT  
ENGINEERING DIVISION

PORTAGE AVENUE REHABILITATION:  
PART A- EASTBOUND FROM SHERBURN ST. TO MARYLAND ST.  
PART B- WESTBOUND FROM EMPRESS ST. TO MINTO ST.

PLAN / PROFILE PART A  
STATION 1+639 TO STATION 1+730

CITY DRAWING NUMBER: P-3359-03  
SHEET 3 OF 21

CONSULTANT DRAWING NO. CT-03