

- REFERENCE NOTES**
- PAVEMENT DIMENSIONS ARE TO BACK OF CURB
 - BASELINE IS 12.0M NORTH OF SOUTH PROPERTY LINE
 - PROPERTY LINES OBTAINED FROM THE CITY OF WINNIPEG L.B.I.S., AND NO SCALE FACTOR WAS APPLIED
 - REFER TO AECOM FIELD BOOK NO. 4821, 4822 & 4823
- CONSTRUCTION NOTES:**
- PLANE EXISTING ASPHALT AND CONSTRUCT NEW ASPHALTIC PAVEMENT OVERLAY TYPE 1A (AVERAGE THICKNESS 85mm)
 - REMOVE EXISTING PAVEMENT AND CONSTRUCT NEW 200mm REINFORCED CONCRETE PAVEMENT c/w 85mm TYPE 1A ASPHALT OVERLAY
 - REMOVE EXISTING CONCRETE SIDEWALK AND CONSTRUCT NEW 100mm SIDEWALK c/w PAVING STONE BAND (SEE DETAIL 1)
 - RENEW EXISTING MONOLITHIC CURB RAMP (10mm HT. INTEGRAL)
 - CONSTRUCT NEW MODIFIED BARRIER CURB (150mm AVG. HT. REVEAL SEPARATE)
 - REMOVE EXISTING BARRIER CURB
 - RENEW EXISTING BARRIER CURB (100mm AVG. HT. REVEAL)
 - ADJUST EXISTING CATCH BASIN/MANHOLE TO GRADE
 - REMOVE EXISTING FRAME AND COVER AND PLACE NEW FRAME AND COVER (AP-004 AND AP-005)
 - INSTALL NEW CAST IRON RISER RING
 - INSTALL NEW DETECTABLE SURFACE WARNING TILES
 - ADJUST MTS MANHOLE FRAME AND COVER
 - ADJUST SIGNAL SERVICE BOX
 - ADJUST EXISTING CURB STOP TO GRADE
 - INSTALL VALVE BOX EXTENSION
 - REMOVE EXISTING CATCHBASIN AND CURB INLET
 - INSTALL NEW CURB AND GUTTER INLET c/w CATCHBASIN (SD-023) AND CONNECT TO EXISTING LEAD
 - INSTALL NEW CURB AND GUTTER INLET c/w CATCHPIT (SD-023) AND CONNECT TO EXISTING CATCHBASIN
 - REMOVE EXISTING TREE WELL
 - RE-GRADE EXISTING PAVING STONES
 - REMOVE AND INSTALL EXISTING BENCH (BY OTHERS)
 - REMOVE AND REINSTALL BIKE RACK
 - REMOVE AND REINSTALL CONC. PLANTERS (BY OTHERS)

FOR WORKS IN CLOSE PROXIMITY TO 900 FM AND 400 WATERMAIN, MEET ALL REQUIREMENTS AS OUTLINED IN E17.

METRIC
WHOLE NUMBERS INDICATE MILLIMETRES
DECIMALIZED NUMBERS INDICATE METRES



EXISTING	LEGEND - PLAN	PROPOSED	EXISTING	LEGEND - PLAN	PROPOSED	EXISTING	LEGEND - PROFILE	PROPOSED
150 mm W.M.	WATERMAIN	150 mm W.M.	---	HYDRO	---	x	C PROFILE	---
300mm L.D.S.	HYDRANT	300mm L.D.S.	+	M.T.S.	+	o	SOUTH/EAST GUTTER	---
250mm W.W.S.	VALVE	250mm W.W.S.	o	CONCRETE	---	o	MEDIAN GUTTER	---
	LAND DRAINAGE SEWER		---	ASPHALT	---	o	N/W PROPERTY LINE	---
	WASTEWATER SEWER		---	PROPERTY LINE	---	o	S/E PROPERTY LINE	---
	MANHOLE		o	SURVEY BAR	o			
	CATCH BASIN		o	ELEVATION	(35.750)			
	CURB INLET		o	TREE	o			
	BUILDING OUTLINE		o	SIDEWALK RAMP	o			
	CULVERT		o	CONCRETE SIDEWALK	o			
	GAS		o	FENCE	o			

LOCATION APPROVED UNDERGROUND STRUCTURES

SUPV. U/G STRUCTURES COMMITTEE DATE

NOTE:
LOCATION OF UNDERGROUND STRUCTURES AS SHOWN ARE BASED ON THE BEST INFORMATION AVAILABLE, BUT NO GUARANTEE IS GIVEN THAT ALL EXISTING UTILITIES ARE SHOWN OR THAT THE GIVEN LOCATIONS ARE EXACT. CONFIRMATION OF EXISTENCE AND EXACT LOCATION OF ALL SERVICES MUST BE OBTAINED FROM THE INDIVIDUAL UTILITIES BEFORE PROCEEDING WITH CONSTRUCTION.

B.M. 89R581	S.W. corner Portage Ave. & Sprague St., Tib. on pipe.
ELEV. 232.540	4.8m E. of W.L. Sprague St. produced from the W. along the S.L. of Portage Ave.
0	ISSUED FOR TENDER
NO.	REVISIONS
	DATE
	BY

AECOM

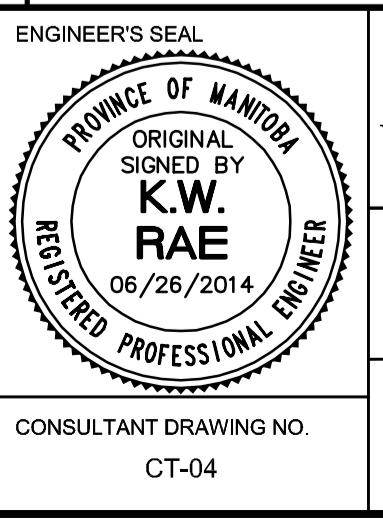
DESIGNED BY: BC
CHECKED BY: KWR

DRAWN BY: RT, PB
APPROVED BY:

HOR. SCALE: 1:250
VERTICAL: 1:10

RELEASED FOR CONSTRUCTION BY:

DATE: 2014/06/26



THE CITY OF WINNIPEG
PUBLIC WORKS DEPARTMENT
ENGINEERING DIVISION

PORTAGE AVENUE REHABILITATION:
PART A- EASTBOUND FROM SHERBURN ST. TO MARYLAND ST.
PART B- WESTBOUND FROM EMPRESS ST. TO MINTO ST.

PLAN / PROFILE PART A
STATION 1+730 TO STATION 1+870

CITY DRAWING NUMBER: P-3359-04
SHEET 4 OF 21

CONSULTANT DRAWING NO. CT-04