

SIDEWALK DETAIL 1

REFERENCE NOTES

- A. PAVEMENT DIMENSIONS ARE TO BACK OF CURB
- B. BASELINE IS 12.0M NORTH OF SOUTH PROPERTY LINE
- C. PROPERTY LINES OBTAINED FROM THE CITY OF WINNIPEG L.B.I.S., AND NO SCALE FACTOR WAS APPLIED
- D. REFER TO AECOM FIELD BOOK NO. 4821, 4822 & 4823

CONSTRUCTION NOTES:

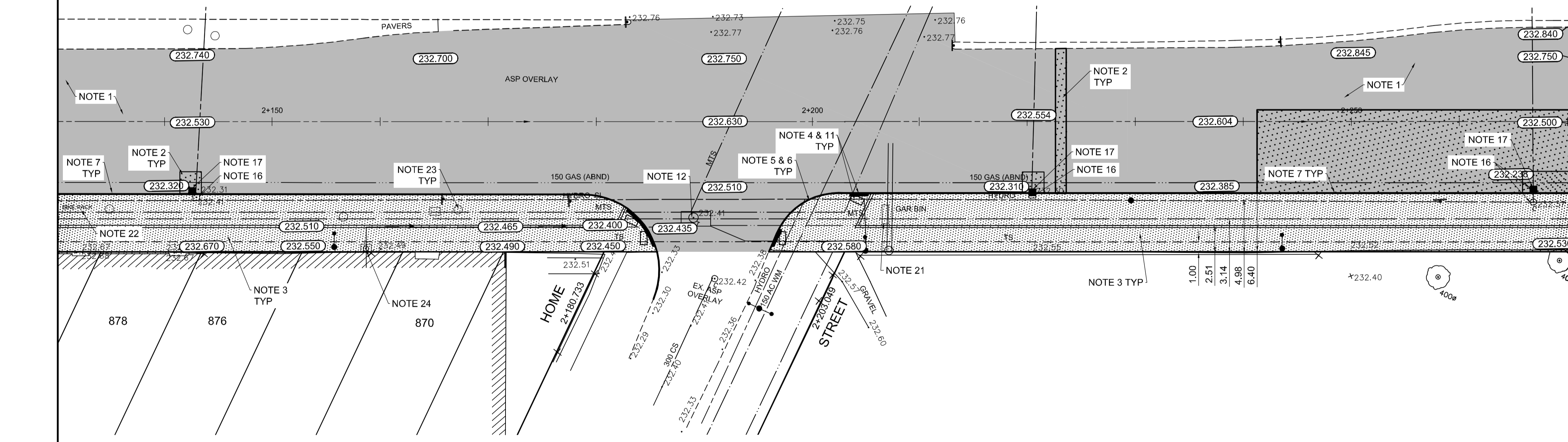
1. PLANE EXISTING ASPHALT AND CONSTRUCT NEW ASPHALTIC PAVEMENT OVERLAY TYPE 1A (AVERAGE THICKNESS 85mm)
2. REMOVE EXISTING PAVEMENT AND CONSTRUCT NEW 200mm REINFORCED CONCRETE PAVEMENT c/w 85mm TYPE 1A ASPHALT OVERLAY
3. REMOVE EXISTING CONCRETE SIDEWALK AND CONSTRUCT NEW 100mm SIDEWALK c/w PAVING STONE BAND (SEE DETAIL 1)
4. RENEW EXISTING MONOLITHIC CURB RAMP (10mm HT. INTEGRAL)
5. CONSTRUCT NEW MODIFIED BARRIER CURB (150mm AVG. HT. REVEAL SEPARATE)
6. REMOVE EXISTING BARRIER CURB
7. RENEW EXISTING BARRIER CURB (100mm AVG. HT. REVEAL)
8. ADJUST EXISTING CATCH BASIN/MANHOLE TO GRADE
9. REMOVE EXISTING FRAME AND COVER AND PLACE NEW FRAME AND COVER (AP-004 AND AP-005)
10. INSTALL NEW CAST IRON RISER RING
11. INSTALL NEW DETECTABLE SURFACE WARNING TILES
12. ADJUST MTS MANHOLE FRAME AND COVER C/W 50mm CAST IRON RISER RING
13. ADJUST EXISTING HYDRO MANHOLE (BY OTHERS)
14. ADJUST EXISTING CURB STOP TO GRADE
15. INSTALL VALVE BOX EXTENSION
16. REMOVE EXISTING CATCHBASIN AND CURB INLET
17. INSTALL NEW CURB AND GUTTER INLET c/w CATCHBASIN (SD-024) AND CONNECT TO EXISTING LEAD
18. REGRADE EXISTING PAVING STONES
19. REMOVE EXISTING TREE WELL
20. REMOVE AND INSTALL EXISTING BENCH (BY OTHERS)
21. REMOVE AND INSTALL EXISTING GARBAGE BIN (BY OTHERS)
22. REMOVE AND INSTALL EXISTING BIKE RACK
23. REMOVE AND INSTALL EXISTING CONC. PLANTERS (BY OTHERS)
24. EXISTING SHAW SERVICE BOX MATCH EXISTING GRADE

PORTAGE AVENUE



MATCHLINE 2+130

MATCHLINE 2+270



**METRIC**  
WHOLE NUMBERS INDICATE MILLIMETRES  
DECIMALIZED NUMBERS INDICATE METRES



EXISTING	LEGEND - PLAN	PROPOSED	EXISTING	LEGEND - PLAN	PROPOSED	EXISTING	LEGEND - PROFILE	PROPOSED
150 mm W.M.	WATERMAIN	150 mm W.M.	---	HYDRO	---	x	C PROFILE	---
300mm L.D.S.	LAND DRAINAGE SEWER	300mm L.D.S.	---	CONCRETE	---	o	SOUTH/EAST GUTTER	---
250mm W.W.S.	WASTEWATER SEWER	250mm W.W.S.	---	ASPHALT	---	o	MEDIAN GUTTER	---
o	MANHOLE	o	---	PROPERTY LINE	---	o	N/W PROPERTY LINE	---
□	CATCH BASIN	□	---	SURVEY BAR	---	o	S/E PROPERTY LINE	---
▽	CURB INLET	▽	---	ELEVATION	(35.750)	o		
///	BUILDING OUTLINE	///	---	TREE	---	o		
---	CULVERT	---	---	SIDEWALK RAMP	---	o		
---	GAS	---	---	CONCRETE SIDEWALK	---	o		
---		---	---	FENCE	---	o		

**LOCATION APPROVED UNDERGROUND STRUCTURES**

SUPV. U/G STRUCTURES COMMITTEE DATE

**NOTE:**  
LOCATION OF UNDERGROUND STRUCTURES AS SHOWN ARE BASED ON THE BEST INFORMATION AVAILABLE, BUT NO GUARANTEE IS GIVEN THAT ALL EXISTING UTILITIES ARE SHOWN OR THAT THE GIVEN LOCATIONS ARE EXACT. CONFIRMATION OF EXISTENCE AND EXACT LOCATION OF ALL SERVICES MUST BE OBTAINED FROM THE INDIVIDUAL UTILITIES BEFORE PROCEEDING WITH CONSTRUCTION.

B.M. 89R581	S.W. corner Portage Ave. & Sprague St., Tblt. on pipe.
ELEV. 232.540	4.8m E. of W.L. Sprague St. produced from the W. along the S.L. of Portage Ave.
0	ISSUED FOR TENDER
NO.	REVISIONS
	DATE BY
	2014/06/26 KWR

**AECOM**

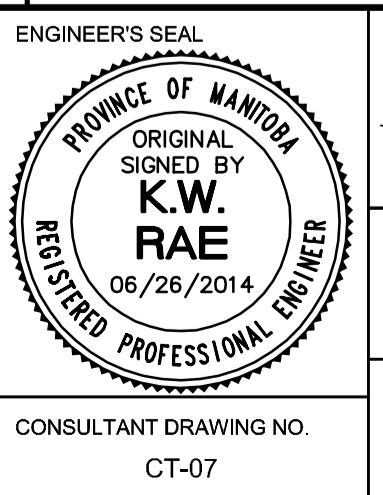
DESIGNED BY: BC  
CHECKED BY: KWR

DRAWN BY: RT, PB  
APPROVED BY:

HOR. SCALE: 1:250  
VERTICAL: 1:10

RELEASED FOR CONSTRUCTION BY:

DATE: 2014/06/26



**THE CITY OF WINNIPEG**  
PUBLIC WORKS DEPARTMENT  
ENGINEERING DIVISION

PORTAGE AVENUE REHABILITATION:  
PART A- EASTBOUND FROM SHERBURN ST. TO MARYLAND ST.  
PART B- WESTBOUND FROM EMPRESS ST. TO MINTO ST.

PLAN / PROFILE PART A  
STATION 2+130 TO STATION 2+270

CITY DRAWING NUMBER: P-3359-07  
SHEET 7 OF 21

CONSULTANT DRAWING NO. CT-07