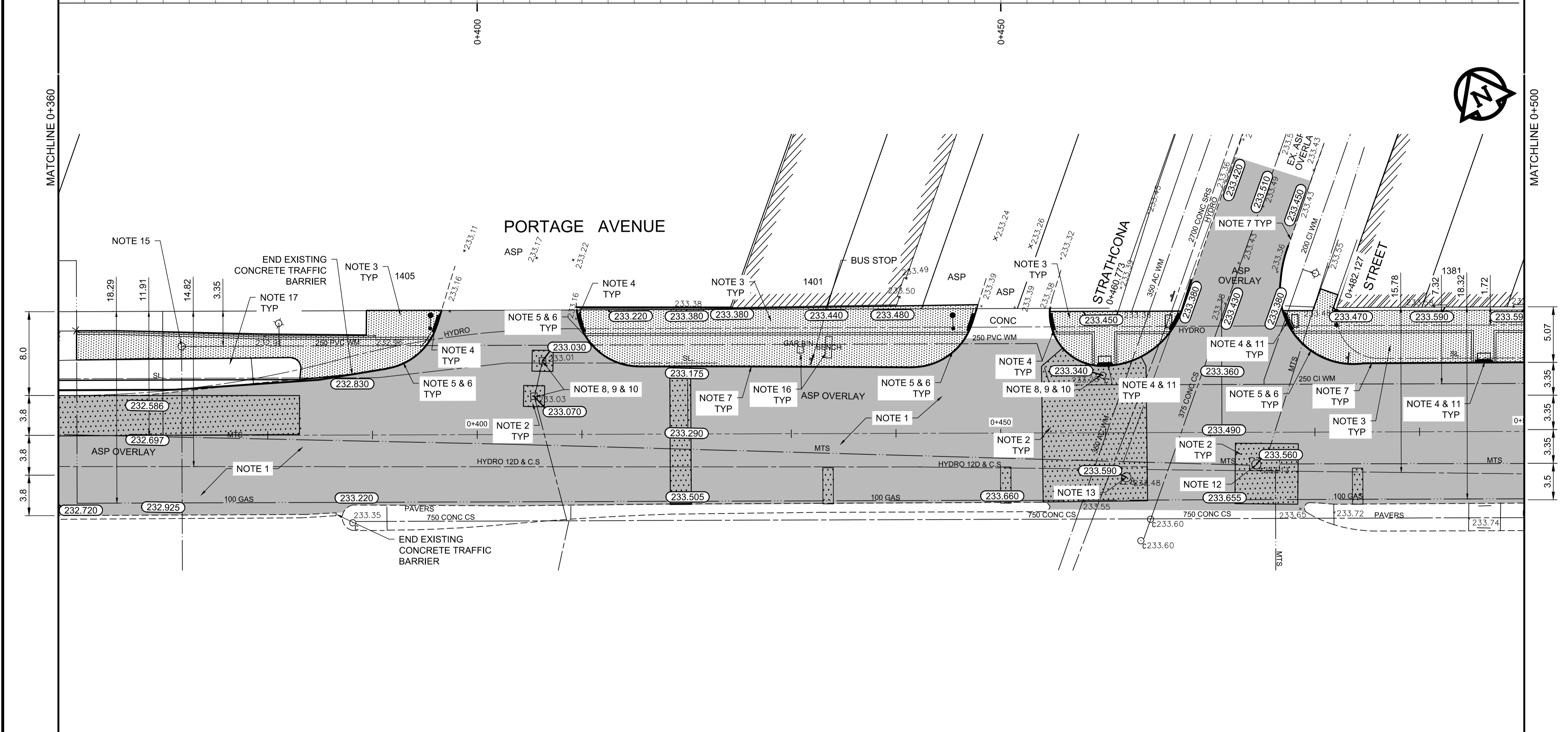


SIDEWALK DETAIL 1



- REFERENCE NOTES**
- PAVEMENT DIMENSIONS ARE TO BACK OF CURB
 - BASELINE IS 12.0M SOUTH OF NORTH GUTTER
 - PROPERTY LINES OBTAINED FROM THE CITY OF WINNIPEG L.B.I.S., AND NO SCALE FACTOR WAS APPLIED
 - REFER TO AECOM FIELD BOOK NO. 4821, 4822 & 4823

- CONSTRUCTION NOTES:**
- PLANE EXISTING ASPHALT AND CONSTRUCT NEW ASPHALTIC PAVEMENT OVERLAY TYPE 1A (AVERAGE THICKNESS 85mm)
 - REMOVE EXISTING PAVEMENT AND CONSTRUCT NEW 200mm REINFORCED CONCRETE PAVEMENT c/w 85mm TYPE 1A ASPHALT OVERLAY
 - REMOVE EXISTING CONCRETE SIDEWALK AND CONSTRUCT NEW 100mm SIDEWALK c/w PAVING STONE BAND (SEE DETAIL 1)
 - RENEW EXISTING MONOLITHIC CURB RAMP (10mm HT. INTEGRAL)
 - CONSTRUCT NEW MODIFIED BARRIER CURB (150mm AVG. HT. REVEAL SEPARATE)
 - REMOVE EXISTING BARRIER CURB
 - RENEW EXISTING BARRIER CURB (100mm AVG. HT. REVEAL)
 - ADJUST EXISTING CATCH BASIN/MANHOLE TO GRADE
 - REMOVE EXISTING FRAME AND COVER AND PLACE NEW FRAME AND COVER (AP-004 AND AP-005)
 - INSTALL NEW CAST IRON RISER RING
 - INSTALL NEW DETECTABLE SURFACE WARNING TILES
 - REMOVE AND INSTALL NEW MTS MANHOLE FRAME AND COVER c/w 50mm CAST IRON RISER RING
 - ADJUST EXISTING HYDRO MANHOLE (BY OTHERS)
 - ADJUST EXISTING CURB STOP TO GRADE
 - ADJUST EXISTING VALVE BOX
 - REMOVE EXISTING GARBAGE BIN AND/OR BENCH (BY OTHERS)
 - PLACE LANDSCAPING MULCH c/w WEED BARRIER

150 mm W.M.	WATERMAIN	150 mm W.M.	HYDRO	PROPERTY LINE	EXISTING	LEGEND - PROFILE	PROPOSED
300mm L.D.S.	LAND DRAINAGE SEWER	300mm L.D.S.	CONCRETE	SURVEY BAR	EXISTING	LEGEND - PROFILE	PROPOSED
250mm W.W.S.	WASTEWATER SEWER	250mm W.W.S.	ASPHALT	ELEVATION (35.750)	EXISTING	LEGEND - PROFILE	PROPOSED
○	MANHOLE	●	PROPERTY LINE	TREE	EXISTING	LEGEND - PROFILE	PROPOSED
□	CATCH BASIN	■	SURVEY BAR	SIDEWALK RAMP	EXISTING	LEGEND - PROFILE	PROPOSED
▽	CURB INLET	⬇	ELEVATION	CONCRETE SIDEWALK	EXISTING	LEGEND - PROFILE	PROPOSED
+	JUNCTIONS	+	TREE	FENCE	EXISTING	LEGEND - PROFILE	PROPOSED
—	CULVERT	—	SIDEWALK RAMP	CONCRETE SIDEWALK	EXISTING	LEGEND - PROFILE	PROPOSED
—	GAS	—	CONCRETE SIDEWALK	FENCE	EXISTING	LEGEND - PROFILE	PROPOSED

LOCATION APPROVED UNDERGROUND STRUCTURES

SUPV. U/G STRUCTURES COMMITTEE DATE

NOTE:
LOCATION OF UNDERGROUND STRUCTURES AS SHOWN ARE BASED ON THE BEST INFORMATION AVAILABLE. BUT NO GUARANTEE IS GIVEN THAT ALL EXISTING UTILITIES ARE SHOWN OR THAT THE GIVEN LOCATIONS ARE EXACT. CONFIRMATION OF EXISTENCE AND EXACT LOCATION OF ALL SERVICES MUST BE OBTAINED FROM THE INDIVIDUAL UTILITIES BEFORE PROCEEDING WITH CONSTRUCTION.

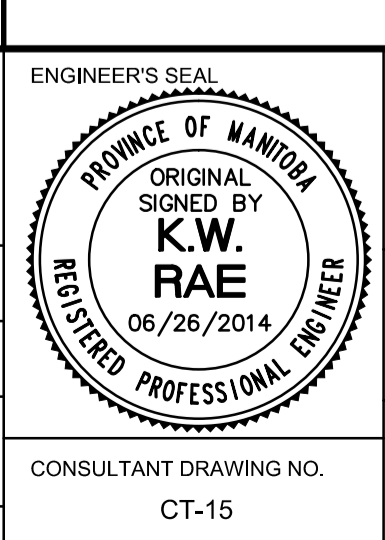
B.M.	89R581	S.W. corner Portage Ave. & Sprague St., Tbt. on pipe, 4.8m E. of W.L. Sprague St. produced from the W. along the S.L. of Portage Ave.
ELEV.	232.540	
NO.	REVISIONS	DATE BY
0	ISSUED FOR TENDER	2014/06/26 KWR

AECOM

DESIGNED BY: BC
DRAWN BY: RT, PB
HOR. SCALE: 1:250
VERTICAL: 1:10

CHECKED BY: KWR
APPROVED BY:
RELEASED FOR CONSTRUCTION BY:

ISSUED FOR TENDER: 2014/06/26 KWR



METRIC
WHOLE NUMBERS INDICATE MILLIMETRES
DECIMALIZED NUMBERS INDICATE METRES

THE CITY OF WINNIPEG
PUBLIC WORKS DEPARTMENT
ENGINEERING DIVISION

PORTAGE AVENUE REHABILITATION:
PART A- EASTBOUND FROM SHERBURN ST. TO MARYLAND ST.
PART B- WESTBOUND FROM EMPRESS ST. TO MINTO ST.

PLAN / PROFILE PART B
STATION 0+360 TO STATION 0+500

CITY DRAWING NUMBER: P-3356-04
SHEET 15 OF 21

CONSULTANT DRAWING NO. CT-15