

- REFERENCE NOTES**
- A. PAVEMENT DIMENSIONS ARE TO BACK OF CURB
 - B. BASELINE IS 12.0M SOUTH OF NORTH GUTTER
 - C. PROPERTY LINES OBTAINED FROM THE CITY OF WINNIPEG L.B.I.S., AND NO SCALE FACTOR WAS APPLIED
 - D. REFER TO AECOM FIELD BOOK NO. 4821, 4822 & 4823

- CONSTRUCTION NOTES:**
1. PLANE EXISTING ASPHALT AND CONSTRUCT NEW ASPHALTIC PAVEMENT OVERLAY TYPE 1A (AVERAGE THICKNESS 85mm)
 2. REMOVE EXISTING PAVEMENT AND CONSTRUCT NEW 200mm REINFORCED CONCRETE PAVEMENT c/w 85mm TYPE 1A ASPHALT OVERLAY
 3. REMOVE EXISTING CONCRETE SIDEWALK AND CONSTRUCT NEW 100mm SIDEWALK c/w PAVING STONE BAND (SEE DETAIL 1)
 4. RENEW EXISTING MONOLITHIC CURB RAMP (100mm HT. INTEGRAL)
 5. CONSTRUCT NEW MODIFIED BARRIER CURB (150mm AVG. HT. SEPARATE) AND 100mm SIDEWALK
 6. REMOVE EXISTING BARRIER CURB
 7. RENEW EXISTING BARRIER CURB (100mm AVG. HT. REVEAL)
 8. ADJUST EXISTING CATCH BASIN/MANHOLE TO GRADE
 9. REMOVE EXISTING FRAME AND COVER AND PLACE NEW FRAME AND COVER (AP-004 AP-005)
 10. INSTALL NEW CAST IRON RISER RING
 11. INSTALL NEW DETECTABLE SURFACE WARNING TILES
 12. ADJUST MTS MANHOLE FRAME AND COVER c/w 50mm CAST IRON RISER RING
 13. ADJUST EXISTING HYDRO MANHOLE (BY OTHERS)
 14. ADJUST EXISTING CURB STOP TO GRADE
 15. INSTALL NEW VALVE BOX EXTENSION
 16. REMOVE EXISTING CATCHBASIN AND CURB INLET
 17. INSTALL NEW CURB AND GUTTER INLET c/w CATCHBASIN (SD-024 - 1800mm) AND CONNECT TO EXISTING LEAD
 18. REMOVE AND RE-CONSTRUCT NEW SAFETY MEDIAN
 19. REMOVE AND RE-INSTALL GARBAGE BIN (BY OTHERS)
 20. REMOVE AND RE-INSTALL BUS SHELTER (BY OTHERS)
 21. CONSTRUCT CONCRETE BULLNOSE
 22. CONSTRUCT NEW CONCRETE TREE WELL (SEE DETAIL 2)
 23. ADJUST VALVE BOX

150 mm W.M.	WATERMAIN	150 mm W.M.	HYDRO	—X—	PROPERTY LINE	—X—	PROPERTY LINE
300mm L.D.S.	LAND DRAINAGE SEWER	300mm L.D.S.	M.T.S.	—□—	CONCRETE	—□—	CONCRETE
250mm W.W.S.	WASTEWATER SEWER	250mm W.W.S.	ASPHALT	—◇—	ASPHALT	—◇—	ASPHALT
○	MANHOLE	○	PROPERTY LINE	—○—	PROPERTY LINE	—○—	PROPERTY LINE
□	CATCH BASIN	□	SURVEY BAR	—□—	SURVEY BAR	—□—	SURVEY BAR
▽	CURB INLET	▽	ELEVATION	—(5.750)—	ELEVATION	—(5.750)—	ELEVATION
+	JUNCTIONS	+	TREE	—○—	TREE	—○—	TREE
—	CULVERT	—	SIDEWALK RAMP	—	SIDEWALK RAMP	—	SIDEWALK RAMP
—	GAS	—	CONCRETE SIDEWALK	—	CONCRETE SIDEWALK	—	CONCRETE SIDEWALK
—	EXISTING	—	FENCE	—	FENCE	—	FENCE
—	LEGEND - PLAN	—	PROPOSED	—	PROPOSED	—	PROPOSED

LOCATION APPROVED UNDERGROUND STRUCTURES

SUPV. U/G STRUCTURES COMMITTEE DATE

NOTE:
LOCATION OF UNDERGROUND STRUCTURES AS SHOWN ARE BASED ON THE BEST INFORMATION AVAILABLE. BUT NO GUARANTEE IS GIVEN THAT ALL EXISTING UTILITIES ARE SHOWN OR THAT THE GIVEN LOCATIONS ARE EXACT. CONFIRMATION OF EXISTENCE AND EXACT LOCATION OF ALL SERVICES MUST BE OBTAINED FROM THE INDIVIDUAL UTILITIES BEFORE PROCEEDING WITH CONSTRUCTION.

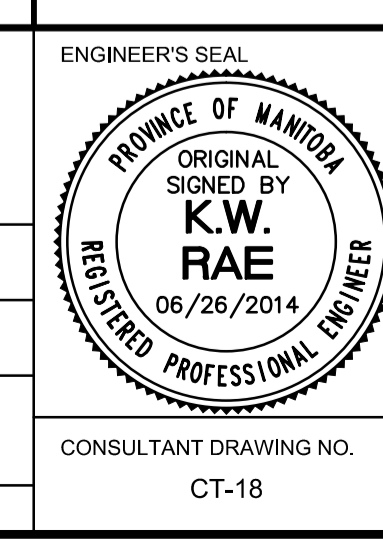
B.M. 89R581	S.W. corner Portage Ave. & Sprague St., Tbt. on pipe, 4.8m E. of W.L. Sprague St. produced from the W. along the S.L. of Portage Ave.		
ELEV. 232.540			
0	ISSUED FOR TENDER	2014/06/26	KWR
NO.	REVISIONS	DATE	BY

AECOM

DESIGNED BY: BC
DRAWN BY: RT, PB
HOR. SCALE: 1:250
VERTICAL: 1:10

CHECKED BY: KWR
APPROVED BY:
RELEASED FOR CONSTRUCTION BY:

DATE: 2014/06/26



METRIC
WHOLE NUMBERS INDICATE MILLIMETRES
DECIMALIZED NUMBERS INDICATE METRES

THE CITY OF WINNIPEG
PUBLIC WORKS DEPARTMENT
ENGINEERING DIVISION

PORTAGE AVENUE REHABILITATION:
PART A- EASTBOUND FROM SHERBURN ST. TO MARYLAND ST.
PART B- WESTBOUND FROM EMPRESS ST. TO MINTO ST.

PLAN / PROFILE PART B
STATION 0+770 TO STATION 0+910

CITY DRAWING NUMBER: P-3356-07
SHEET 18 OF 21

CONSULTANT DRAWING NO. CT-18