

SIDEWALK DETAIL 1

REFERENCE NOTES

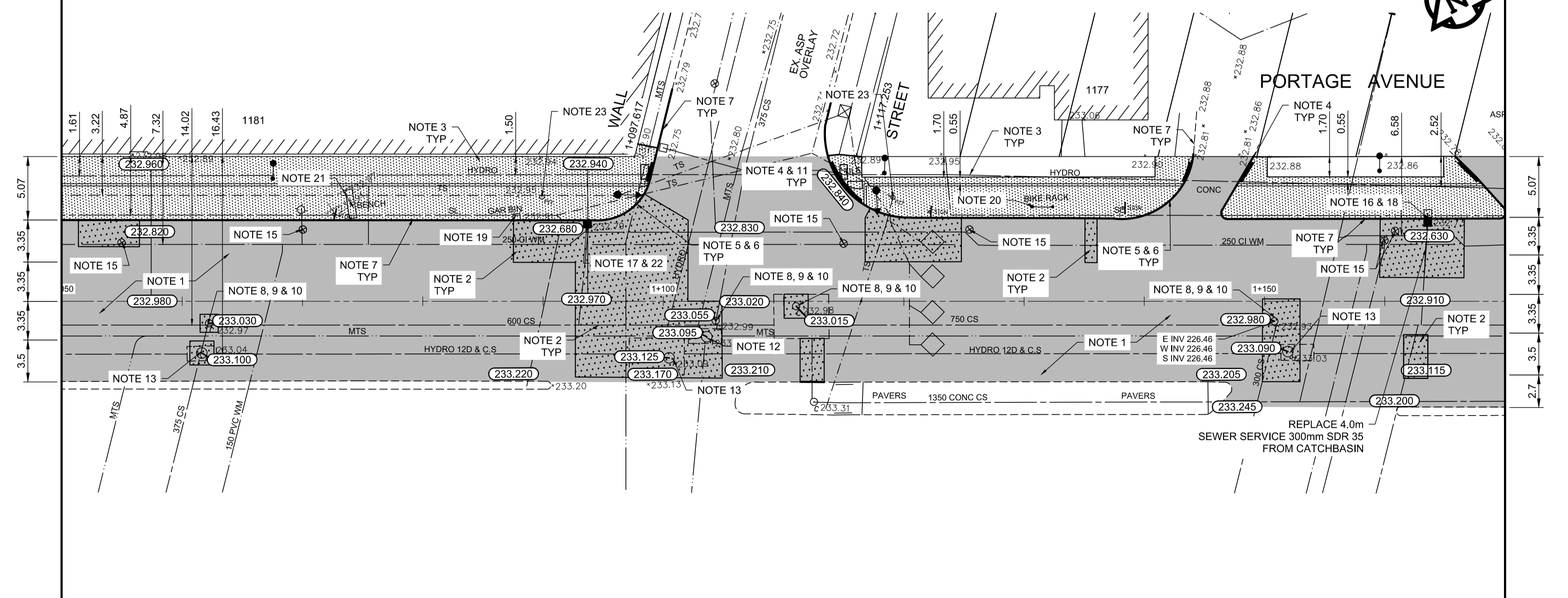
- A. PAVEMENT DIMENSIONS ARE TO BACK OF CURB
- B. BASELINE IS 12.0M SOUTH OF NORTH GUTTER
- C. PROPERTY LINES OBTAINED FROM THE CITY OF WINNIPEG L.B.I.S., AND NO SCALE FACTOR WAS APPLIED
- D. REFER TO AECOM FIELD BOOK NO. 4821, 4822 & 4823

CONSTRUCTION NOTES:

1. PLANE EXISTING ASPHALT AND CONSTRUCT NEW ASPHALTIC PAVEMENT OVERLAY TYPE 1A (AVERAGE THICKNESS 85mm)
2. REMOVE EXISTING PAVEMENT AND CONSTRUCT NEW 200mm REINFORCED CONCRETE PAVEMENT c/w 85mm TYPE 1A ASPHALT OVERLAY
3. REMOVE EXISTING CONCRETE SIDEWALK AND CONSTRUCT NEW 100mm SIDEWALK c/w PAVING STONE BAND (SEE DETAIL 1)
4. RENEW EXISTING MONOLITHIC CURB RAMP (10mm HT. INTEGRAL)
5. CONSTRUCT NEW MODIFIED BARRIER CURB (150mm AVG. HT. SEPARATE)
6. REMOVE EXISTING BARRIER CURB
7. RENEW BARRIER CURB (100mm AVG. HT. REVEAL)
8. ADJUST EXISTING CATCH BASIN/MANHOLE TO GRADE
9. REMOVE EXISTING FRAME AND COVER AND PLACE NEW FRAME AND COVER (AP-004 AND AP-005)
10. INSTALL NEW CAST IRON RISER RING
11. INSTALL NEW DETECTABLE SURFACE WARNING TILES
12. ADJUST MTS MANHOLE FRAME AND COVER c/w 50mm CAST IRON RISER RING
13. ADJUST EXISTING HYDRO MANHOLE (BY OTHERS)
14. ADJUST EXISTING CURB STOP TO GRADE
15. INSTALL NEW VALVE BOX EXTENSION
16. REMOVE EXISTING CATCHBASIN AND CURB INLET
17. REMOVE EXISTING CURB BOX INLET
18. INSTALL NEW CURB AND GUTTER INLET c/w CATCHBASIN (SD-024 - 1800mm) AND CONNECT TO EXISTING LEAD
19. REMOVE AND INSTALL GARBAGE BIN (BY OTHERS)
20. REMOVE AND INSTALL BIKE RACK (BY OTHERS)
21. REMOVE AND INSTALL BENCH (BY OTHERS)
22. INSTALL NEW CURB AND GUTTER INLET c/w CATCHBASIN (SD-024 - 1200mm) AND CONNECT TO EXISTING LEAD
23. ADJUST SIGNAL SERVICE BOX FRAME AND COVER

MATCHLINE 1+050

MATCHLINE 1+170



METRIC
WHOLE NUMBERS INDICATE MILLIMETRES
DECIMALIZED NUMBERS INDICATE METRES



150 mm W.M.	WATERMAIN	150 mm W.M.	HYDRO	PROPERTY LINE	— — — — —	— — — — —	— — — — —
300 mm L.D.S.	LAND DRAINAGE SEWER	300 mm L.D.S.	CONCRETE	SURVEY BAR	— — — — —	— — — — —	— — — — —
250 mm W.W.S.	WASTEWATER SEWER	250 mm W.W.S.	ASPHALT	ELEVATION	— — — — —	— — — — —	— — — — —
○	MANHOLE	○	PROPERTY LINE	TREE	— — — — —	— — — — —	— — — — —
□	CATCH BASIN	□	SURVEY BAR	SIDEWALK RAMP	— — — — —	— — — — —	— — — — —
▽	CURB INLET	▽	ELEVATION	CONCRETE SIDEWALK	— — — — —	— — — — —	— — — — —
— — — — —	JUNCTIONS	— — — — —	CONCRETE SIDEWALK	FENCE	— — — — —	— — — — —	— — — — —
— — — — —	CULVERT	— — — — —	FENCE	LEGEND - PLAN	PROPOSED	EXISTING	LEGEND - PROFILE
— — — — —	LEGEND - PLAN	PROPOSED	LEGEND - PLAN	PROPOSED	EXISTING	LEGEND - PROFILE	PROPOSED

LOCATION APPROVED UNDERGROUND STRUCTURES

SUPV. / U/G STRUCTURES COMMITTEE DATE

NOTE:
LOCATION OF UNDERGROUND STRUCTURES AS SHOWN ARE BASED ON THE BEST INFORMATION AVAILABLE. BUT NO GUARANTEE IS GIVEN THAT ALL EXISTING UTILITIES ARE SHOWN OR THAT THE GIVEN LOCATIONS ARE EXACT. CONFIRMATION OF EXISTENCE AND EXACT LOCATION OF ALL SERVICES MUST BE OBTAINED FROM THE INDIVIDUAL UTILITIES BEFORE PROCEEDING WITH CONSTRUCTION.

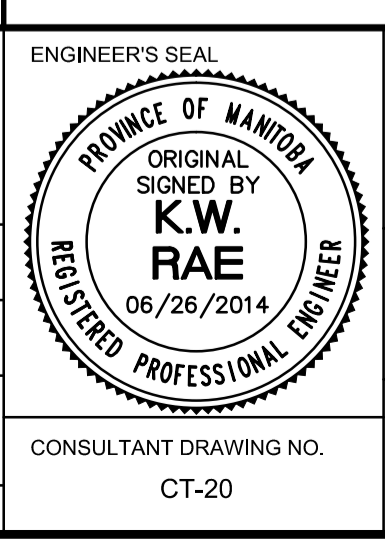
B.M. 89R581	S.W. corner Portage Ave. & Sprague St., Tbt. on pipe, 4.8m E. of W.L. Sprague St. produced from the W. along the S.L. of Portage Ave.		
ELEV. 232.540			
0	ISSUED FOR TENDER	2014/06/26	KWR
NO.	REVISIONS	DATE	BY

AECOM

DESIGNED BY: BC
DRAWN BY: RT, PB
HOR. SCALE: 1:250
VERTICAL: 1:10

CHECKED BY: KWR
APPROVED BY:
RELEASED FOR CONSTRUCTION BY:

ISSUED FOR TENDER: 2014/06/26
DATE: 2014/06/26



THE CITY OF WINNIPEG
PUBLIC WORKS DEPARTMENT
ENGINEERING DIVISION

PORTAGE AVENUE REHABILITATION:
PART A- EASTBOUND FROM SHERBURN ST. TO MARYLAND ST.
PART B- WESTBOUND FROM EMPRESS ST. TO MINTO ST.

PLAN / PROFILE PART B
STATION 1+050 TO STATION 1+170

CITY DRAWING NUMBER: P-3356-09
SHEET 20 OF 21

CONSULTANT DRAWING NO. CT-20