

## **Appendix D**

### **Site Photos**

**SITE 1a, 1b ST. JAMES INTERCEPTOR  
(500mm WEST, 600mm EAST PIPE) NORTH SIDE**

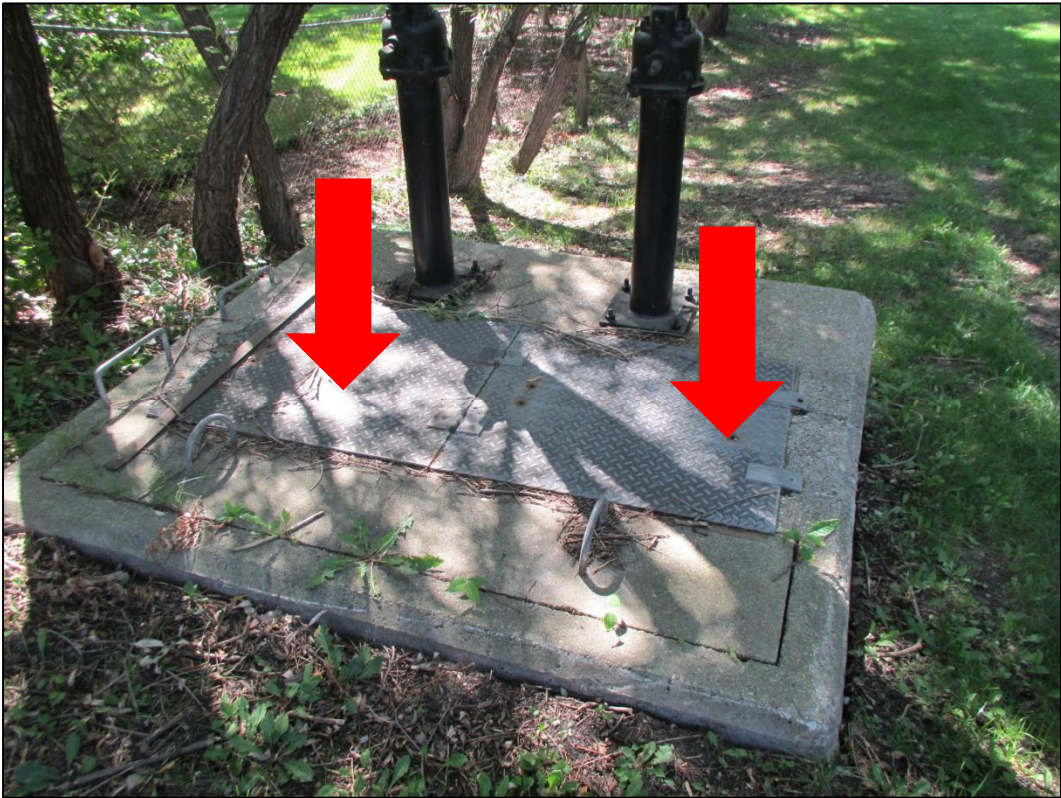


**Figure 1 – Chamber location.**



**Figure 2 – Site access from Assiniboine Avenue.**

**SITE 1a, 1b ST. JAMES INTERCEPTOR  
(500mm WEST, 600mm EAST PIPE) NORTH SIDE**



**Figure 3 – Chamber location.**



**Figure 4 – Chamber interior.**

**SITE 1a , 1b ST. JAMES INTERCEPTOR  
(500mm WEST, 600mm EAST PIPE) SOUTH SIDE**



**Figure 5 – Site access from Elmvale Crescent.**



**Figure 6 – Site access.**

**SITE 1a , 1b ST. JAMES INTERCEPTOR  
(500mm WEST, 600mm EAST PIPE) SOUTH SIDE**



**Figure 7 –Chamber access.**



**Figure 8 – Chamber access.**

**SITE 1a , 1b ST. JAMES INTERCEPTOR  
(500mm WEST, 600mm EAST PIPE) SOUTH SIDE**

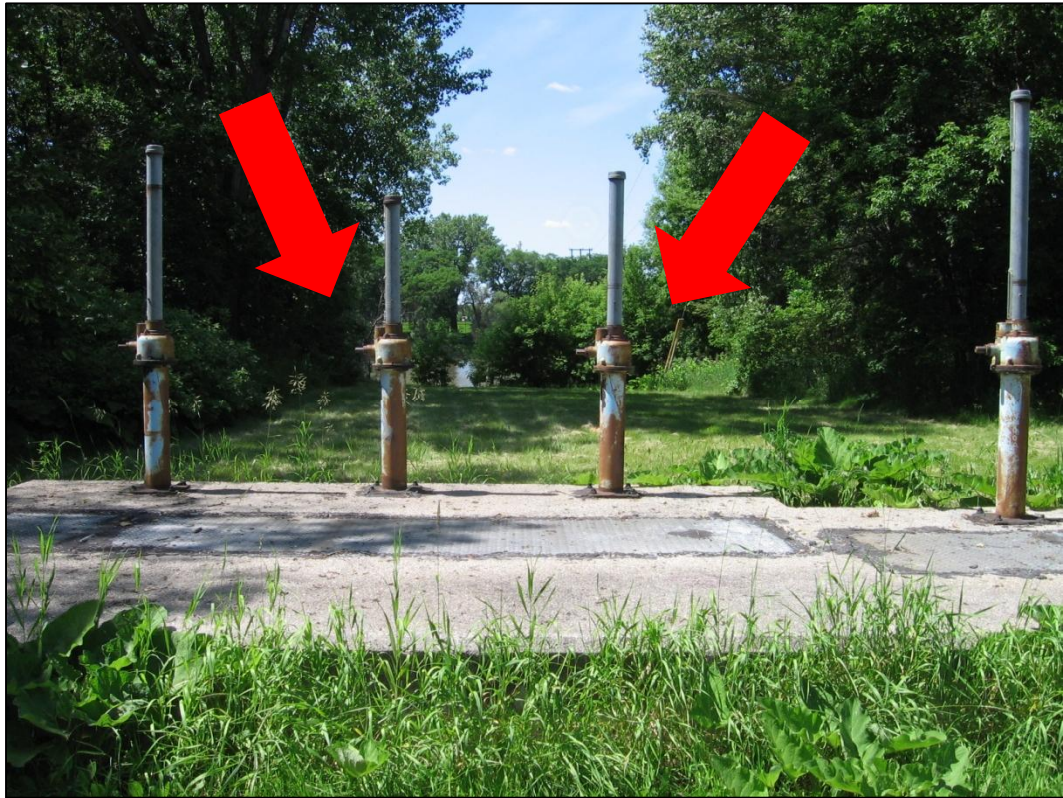


**Figure 9 – Chamber access / interior.**



**Figure 10 – Chamber interior.**

**SITE 2a , 2b NORTHEAST INTERCEPTOR  
(800mm NORTH, 500mm SOUTH PIPE) EAST SIDE**



**Figure 11 – Site access facing west toward river.**



**Figure 12 – Site access, facing east.**

**SITE 2a , 2b NORTHEAST INTERCEPTOR  
(800mm NORTH, 500mm SOUTH PIPE) EAST SIDE**



**Figure 13 – Chamber access.**



**Figure 14 – Chamber access / interior.**



**SITE 2a , 2b NORTHEAST INTERCEPTOR  
(800mm NORTH, 500mm SOUTH PIPE) EAST SIDE**



**Figure 15 – Chamber interior.**



**Figure 16 – Chamber interior.**

**SITE 2a , 2b NORTHEAST INTERCEPTOR  
(800mm NORTH, 500mm SOUTH PIPE) WEST SIDE**



**Figure 17 – Site access, facing west toward golf course.**



**Figure 18 – Chamber interior.**

**SITE 2a , 2b NORTHEAST INTERCEPTOR  
(800mm NORTH, 500mm SOUTH PIPE) WEST SIDE**



**Figure 19 – Chamber interior.**



**Figure 20 – Chamber interior.**

**SITE 2a , 2b NORTHEAST INTERCEPTOR  
(800mm NORTH, 500mm SOUTH PIPE) WEST SIDE**



**Figure 21 – Chamber interior.**



**Figure 22 – Chamber interior.**

**SITE 2a , 2b NORTHEAST INTERCEPTOR  
(800mm NORTH, 500mm SOUTH PIPE) WEST SIDE**



**Figure 23 – Chamber interior.**



**Figure 24 – Chamber interior.**

**SITE 3a NEWTON AVENUE FORCEMAIN  
(350mm SOUTH PIPE) WEST SIDE**



**Figure 25 – Site access from Scotia Street at  
Newton Avenue.**



**Figure 26 – Chamber access.**

**SITE 3a NEWTON AVENUE FORCEMAIN  
(350mm SOUTH PIPE) WEST SIDE**



**Figure 27 – Chamber access.**



**Figure 28 – Chamber access / interior.**

**SITE 3a NEWTON AVENUE FORCEMAIN  
(350mm SOUTH PIPE) WEST SIDE**



**Figure 29 – Chamber interior.**



**Figure 30 – Chamber interior.**



**SITE 3a NEWTON AVENUE FORCEMAIN  
(350mm SOUTH PIPE) EAST SIDE**



**Figure 31 – Site access along Kildonan Drive  
between Rossmere and Larchdale Crescent.**



**Figure 32 – Site access.**

**SITE 3a NEWTON AVENUE FORCEMAIN  
(350mm SOUTH PIPE) EAST SIDE**



**Figure 33 – Chamber interior.**



**Figure 34 – Knife gate and tee.**

**SITE 3a NEWTON AVENUE FORCEMAIN  
(350mm SOUTH PIPE) EAST SIDE**



**Figure 35 – Knife gate.**



**Figure 36 – Tee.**

**SITE 4a, 4b ST. JAMES FORCEMAIN (450 mm)  
NORTH SIDE**



**Figure 37 – Site access from Assiniboine Crescent near Windham Road.**



**Figure 38 – Chamber access.**

**SITE 4a, 4b ST. JAMES FORCEMAIN (450 mm)  
NORTH SIDE**

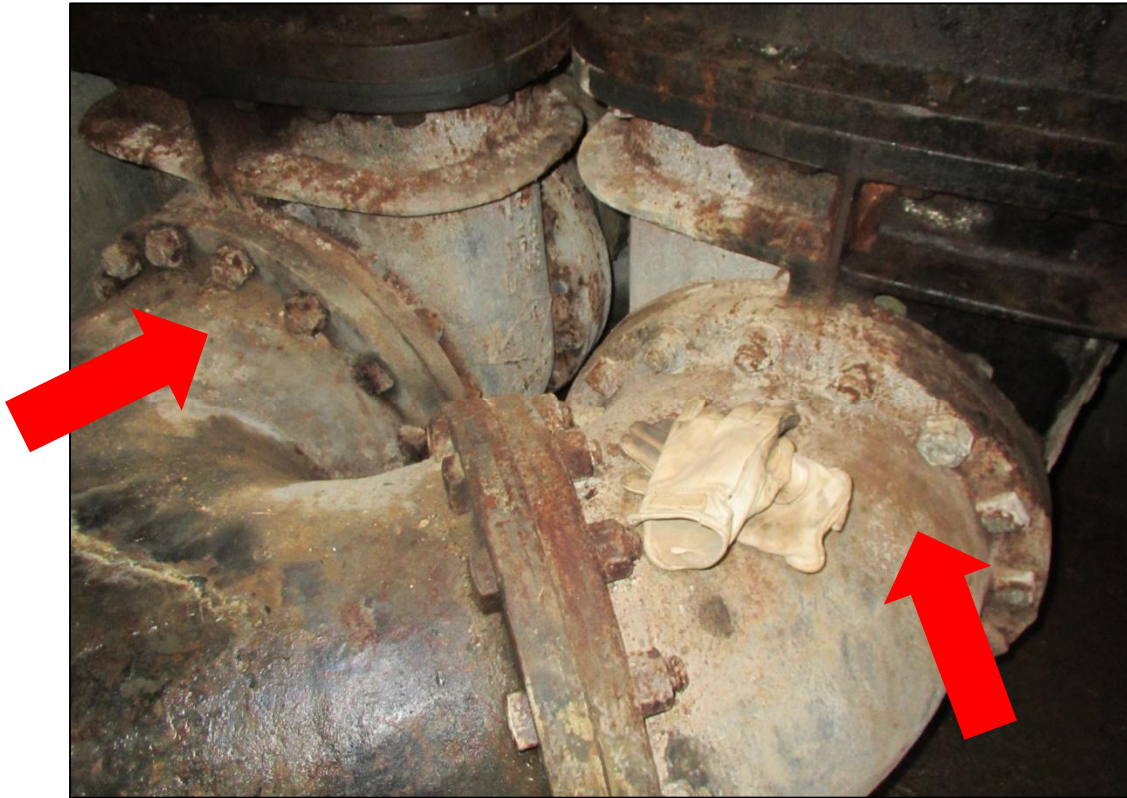


**Figure 39 – Chamber access.**



**Figure 40 – Chamber interior, upstream direction.**

**SITE 4a, 4b ST. JAMES FORCEMAIN (450 mm)  
NORTH SIDE**



**Figure 41 – Chamber piping, facing downstream direction.**



**Figure 42 – Valves.**

**SITE 4a, 4b ST. JAMES FORCEMAIN (450 mm)  
NORTH SIDE**



**Figure 43 – Pipes exiting downstream wall of chamber.**



**Figure 44 – Pipe cradles.**

**SITE 4a, 4b ST. JAMES FORCEMAIN (450 mm)  
SOUTH SIDE**



**Figure 45 – Site access on Ashcroft Point,  
facing west.**



**Figure 46 – Site access, facing east.**



**SITE 4a, 4b ST. JAMES FORCEMAIN (450 mm)  
SOUTH SIDE**



**Figure 47 – Chamber access.**



**Figure 48 – Chamber interior.**

**SITE 6a MUNROE-POLSON SIPHON  
(450mm NORTH PIPE) WEST SIDE**



**Figure 49 – Site Access.  
Scotia Street at Polson Avenue.**

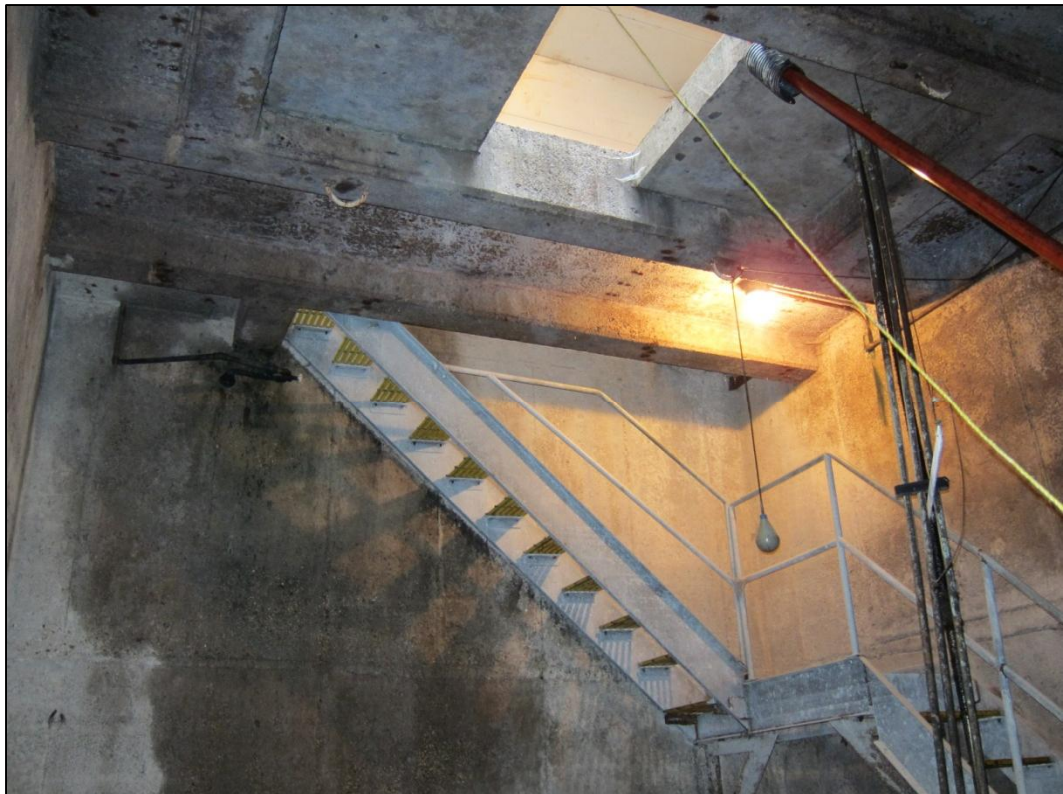


**Figure 50 – Main floor opening / stairwell  
to first sublevel.**

**SITE 6a MUNROE-POLSON SIPHON  
(450mm NORTH PIPE) WEST SIDE**



**Figure 51 – Main floor opening to first sublevel.**



**Figure 52 – View from bottom level up to first sublevel opening.**

**SITE 6a MUNROE-POLSON SIPHON  
(450mm NORTH PIPE) WEST SIDE**



**Figure 53 – Bottom sublevel at siphon outlet.**

**SITE 6a MUNROE-POLSON SIPHON  
(450mm NORTH PIPE) WEST SIDE**



**Figure 54 – Bottom sublevel.**



**Figure 55 – Pipe outlet.**

**SITE 6a MUNROE-POLSON SIPHON  
(450mm NORTH PIPE) EAST SIDE**



**Figure 56 – Site access from Henderson Highway  
at Munroe Avenue.**



**Figure 57 – Station.**

**SITE 6a MUNROE-POLSON SIPHON  
(450mm NORTH PIPE) EAST SIDE**



**Figure 58 – Main floor access.**



**Figure 59 – Sublevel through main floor access.**

**SITE 6a MUNROE-POLSON SIPHON  
(450mm NORTH PIPE) EAST SIDE**



**Figure 60 – Bottom sublevel, inlet side of chamber.**



**Figure 61 – Pipe inlets.**



**SITE 15 TRURO CREEK SIPHON  
WEST SIDE**



**Figure 104 – Site access on Deer Lodge Place,  
facing east.**



**Figure 105 – Site access on Deer Lodge Place,  
facing west.**

**SITE 15 TRURO CREEK SIPHON  
EAST SIDE**



**Figure 106 – Site access on Douglas Park Road at  
Bruce Park Entrance, facing west.**



**Figure 107 – Site access in Bruce Park, facing  
southwest**

**SITE 15 TRURO CREEK SIPHON  
EAST SIDE**



**Figure 108 – Site access in Bruce Park, facing west**



**Figure 109 – Manhole**