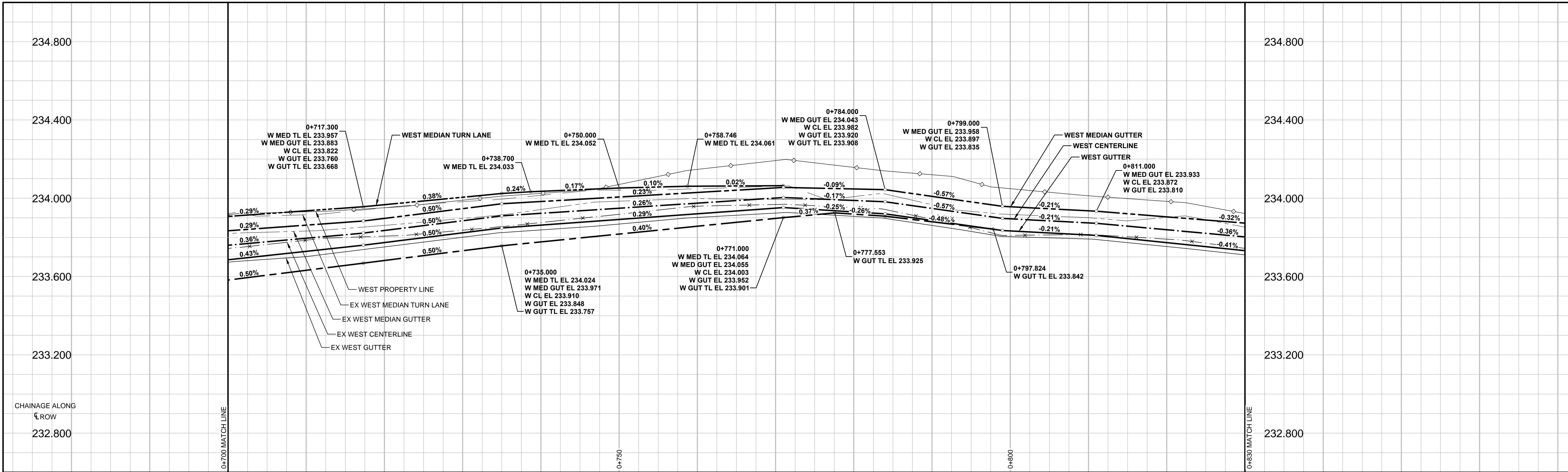
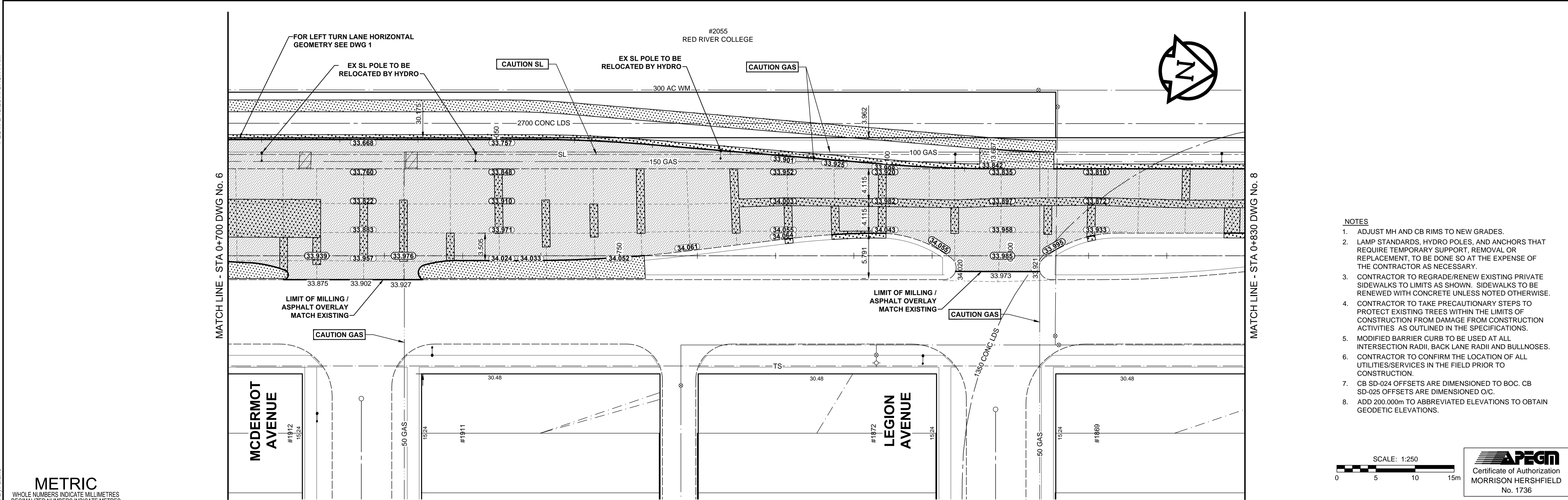


A1 SIZE 894mm x 841mm



FILE NAME: W140003-T-007_RX.dwg Saved By: dlane



- NOTES**
- ADJUST MH AND CB RIMS TO NEW GRADES.
 - LAMP STANDARDS, HYDRO POLES, AND ANCHORS THAT REQUIRE TEMPORARY SUPPORT, REMOVAL OR REPLACEMENT, TO BE DONE SO AT THE EXPENSE OF THE CONTRACTOR AS NECESSARY.
 - CONTRACTOR TO REGRADE/RENEW EXISTING PRIVATE SIDEWALKS TO LIMITS AS SHOWN. SIDEWALKS TO BE RENEWED WITH CONCRETE UNLESS NOTED OTHERWISE.
 - CONTRACTOR TO TAKE PRECAUTIONARY STEPS TO PROTECT EXISTING TREES WITHIN THE LIMITS OF CONSTRUCTION FROM DAMAGE FROM CONSTRUCTION ACTIVITIES AS OUTLINED IN THE SPECIFICATIONS.
 - MODIFIED BARRIER CURB TO BE USED AT ALL INTERSECTION RADII, BACK LANE RADII AND BULLNOSES.
 - CONTRACTOR TO CONFIRM THE LOCATION OF ALL UTILITIES/SERVICES IN THE FIELD PRIOR TO CONSTRUCTION.
 - CB SD-024 OFFSETS ARE DIMENSIONED TO BOC. CB SD-025 OFFSETS ARE DIMENSIONED O.C.
 - ADD 200.000m TO ABBREVIATED ELEVATIONS TO OBTAIN GEODETIC ELEVATIONS.



BID OPPORTUNITY No. 463-2014

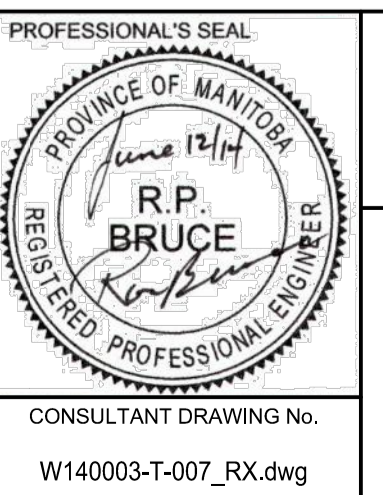
METRIC
WHOLE NUMBERS INDICATE MILLIMETRES
DECIMALIZED NUMBERS INDICATE METRES

EXISTING	LEGEND - PLAN	NEW	EXISTING	LEGEND - PLAN	NEW	EXISTING	LEGEND - PLAN	NEW
○	GAS	○	MANHOLE	●	CONCRETE PAVEMENT	▨	LOCATION APPROVED	GBM 23-15
□	MTS	□	CATCH BASIN / CATCH PIT	▲	CONC SIDEWALK / MEDIAN	▨	UNDERGROUND STRUCTURES	ELEV 234.117
△	HYDRO	△	CURB INLET WITH BOX	■	ASPHALT PAVEMENT	▨		
—	CATV / FIBRE OPTIC	—	TREE	▨	PAVING STONE	▨		
—	TRAFFIC SIGNALS / PIT	—	TEST HOLE	▨	GRAVEL	▨		
—	LAND DRAINAGE SEWER	—	PROPERTY LINE	▨	RAMP CURB	▨		
—	SANITARY/COMBINED SEWER	—	SURVEY BAR	▨	PLANING / REMOVAL	▨		
—	SEWER SERV/DRAINAGE CONN	—	FENCE	▨				
—	WATERMAIN	—	BOC / EDGE OF PAVEMENT	▨				
—	SUBDRAIN	—	ELEVATION	▨				
—	DITCH	—	TRAFFIC SIGN	▨				

DATE	BY	REVISIONS
14/06/12	RPB	0 ISSUED FOR CONSTRUCTION
14/04/04	RPB	1

DESIGNED BY	CHECKED BY
RPB	WRJ
DRAWN BY	APPROVED BY
DID/DML	BWB

HOR. SCALE	VERT. SCALE	DATE
1:250	1:10	14/04/04



THE CITY OF WINNIPEG
PUBLIC WORKS DEPARTMENT
ENGINEERING DIVISION

2014 REGIONAL STREET RENEWAL PACKAGE
KING EDWARD STREET SOUTHBOUND & CENTURY STREET NORTHBOUND
HORIZONTAL AND VERTICAL ALIGNMENT
STA 0+700 TO STA 0+830

CITY DRAWING NUMBER: P-3358-7
SHEET 7 OF 18
DRAWING No. 7
REV 0