

General Notes

1. All existing trees, sidewalks, curbs, catch basins, culverts, survey markers, to remain are to be protected during construction. Any damage to them is to be made good by the Contractor. Maintain positive drainage into all catch basins and curb inlets.
2. All work is to be warranted for a period of not less than 1 year.
3. Contractor is to limit operations to the area within the area of work shown on the drawing. Should areas outside of this limit be damaged during the course of construction, Contractor is to make good the damage at his own expense.
4. Contractor is to obtain location of all utilities prior to construction. If using power equipment to excavate contractor must notify Hydro and Gas and telephone utilities and take steps to avoid damaging their installations.
5. All dimensions are in meters unless otherwise noted.
6. Contractor to confirm all dimensions and report any discrepancies to Contract Administrator prior to construction.
7. Layout is to be approved by Contract Administrator prior to any construction or demolition/removals.

1. This drawing shall not be used for construction unless signed and sealed by Landscape Architect.
2. Variations and modifications to the work shown will not be allowed without prior written consent of Landscape Architect.
3. Drawing and Specifications, as instruments of service, are the property of the Landscape Architect. The copyright is reserved in the name of the Landscape Architect. No reproduction may be made without the prior written consent of the Landscape Architect.
4. Contractors/bidders are hereby granted a limited licence to reproduce these drawings for the purposes of bidding. Such reproductions are not to be used for construction.

B	4/19/14	For Bid Opp
A	3/29/14	For City Review

No.	Date	Issue Notes

Consultant

Project Title

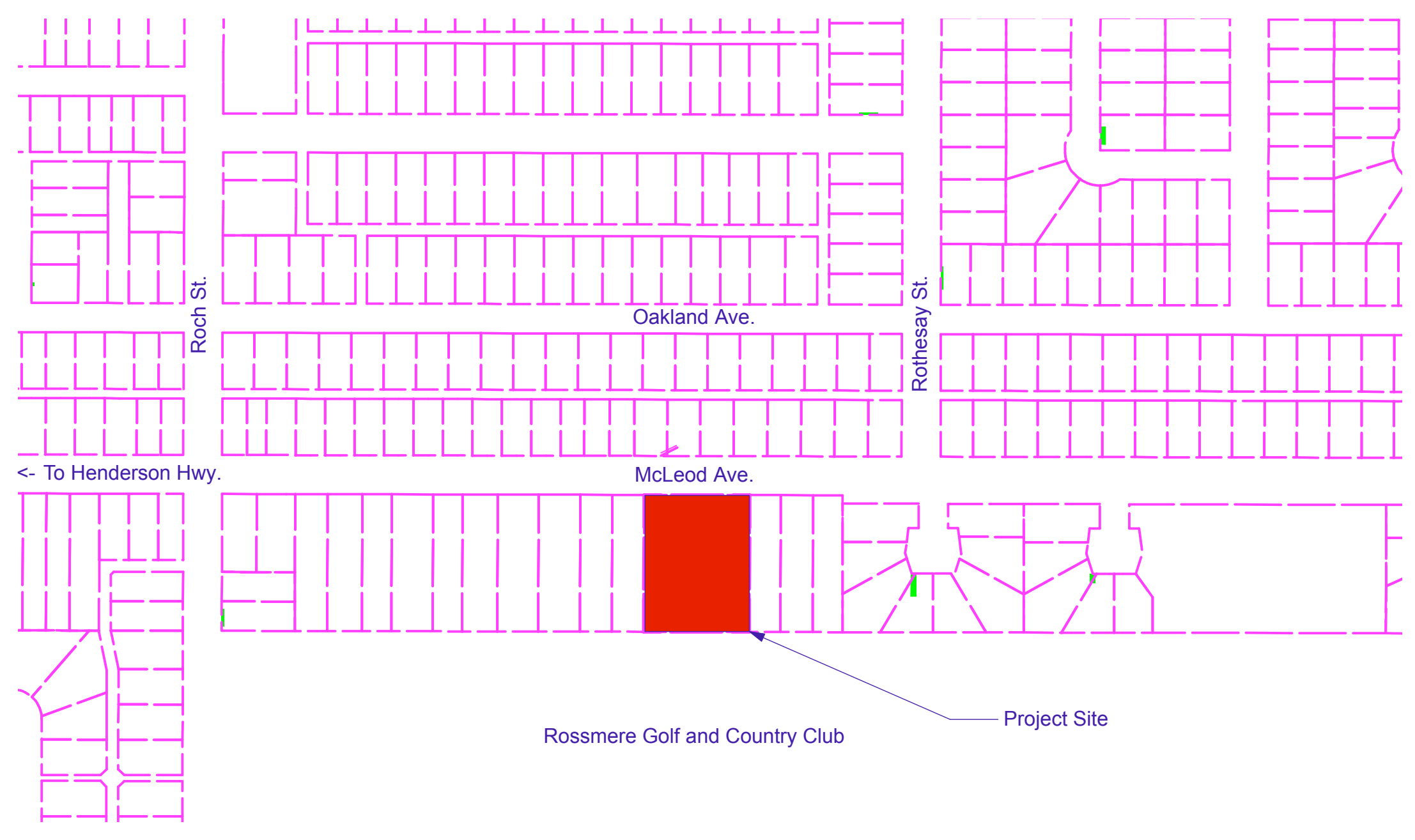
Drawing Title **McLeod Park**

Drawing No.

L-2

of

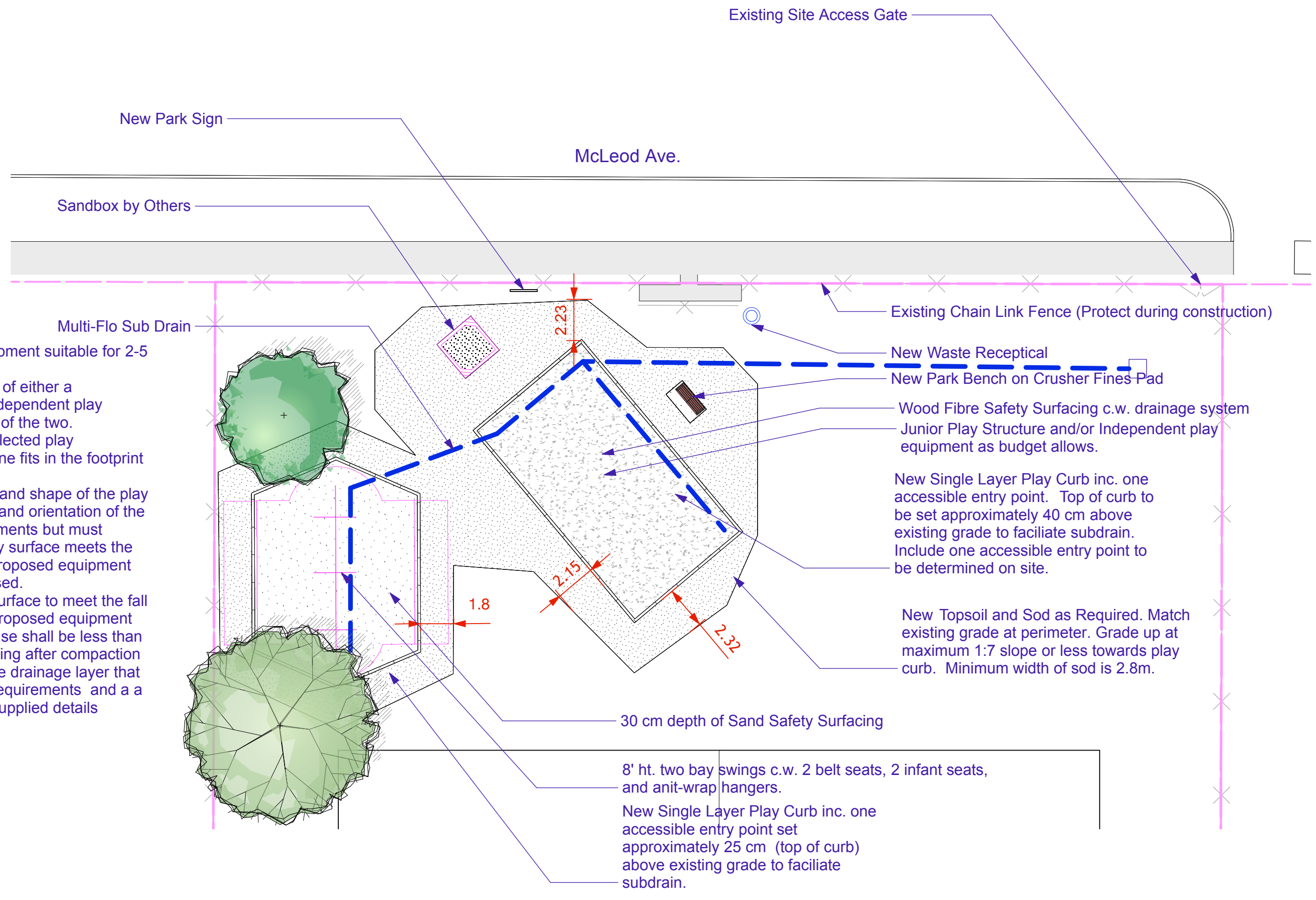
Total Sheets



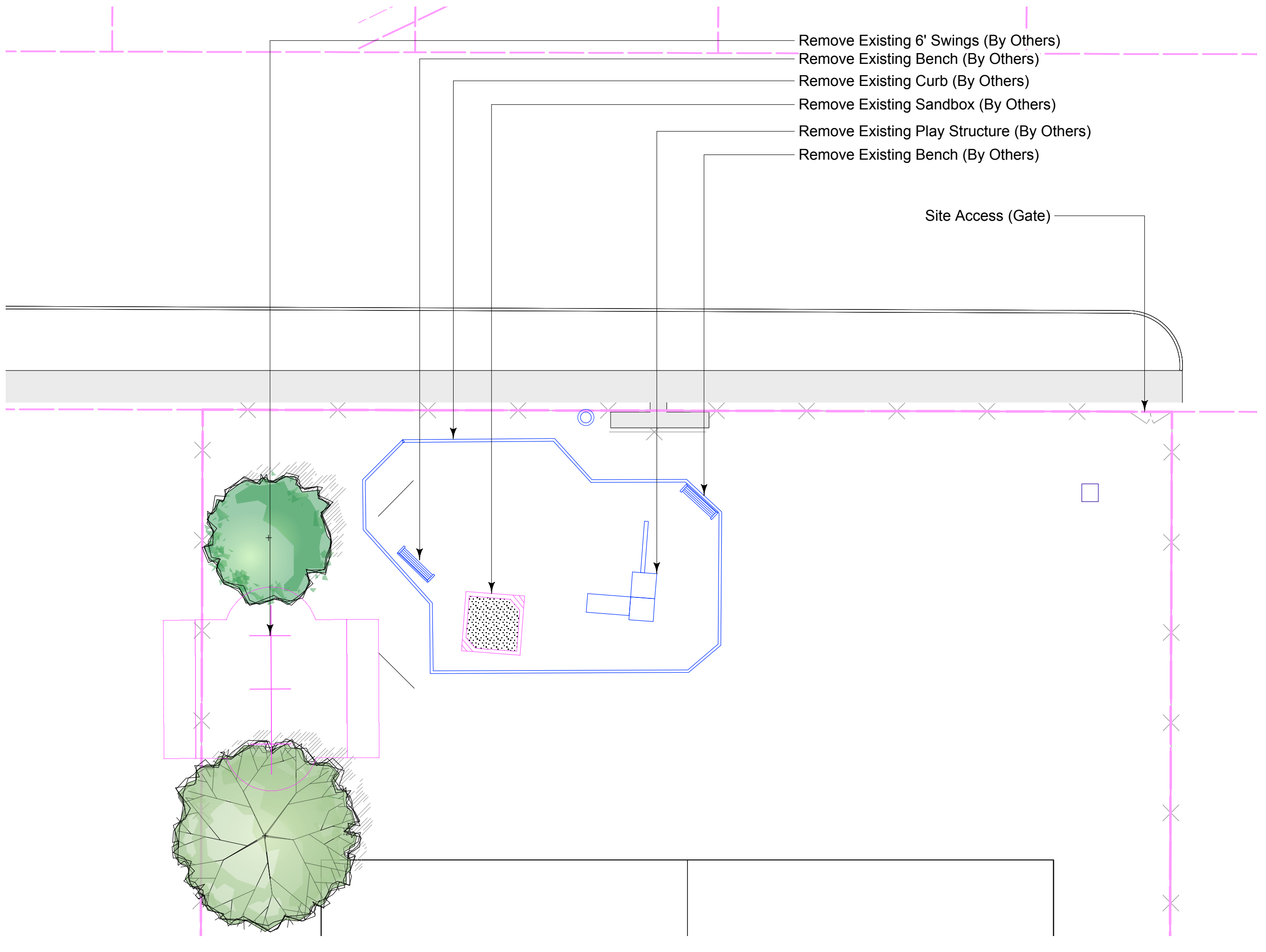
1 Site Context Plan
L-2 Scale: 1:2500

Play Area Layout Note

1. Bidders to provide play equipment suitable for 2-5 year olds.
2. Play equipment may consist of either a compound play structure, independent play equipment or a combination of the two.
3. Bidder to confirm that the selected play equipment, and its safety zone fits in the footprint of the safety surfacing.
4. Bidders may adjust the size and shape of the play surface area and the length and orientation of the curb to meet budget requirements but must ensure that the resulting play surface meets the safety requirements of the proposed equipment and that the play curb is closed.
5. Depth of wood fibre safety surface to meet the fall height requirements of the proposed equipment plus 20% depth but, in no case shall be less than 20 cm depth of safety surfacing after compaction.
6. Safety surfacing shall include drainage layer that meets the safety surfacing requirements and a sub drain assembly as per supplied details.



3 Site Concept Plan - Alternative A
L-2 Scale: 1:200



- Remove Existing 6' Swings (By Others)
- Remove Existing Bench (By Others)
- Remove Existing Curb (By Others)
- Remove Existing Sandbox (By Others)
- Remove Existing Play Structure (By Others)
- Remove Existing Bench (By Others)

Site Access (Gate)