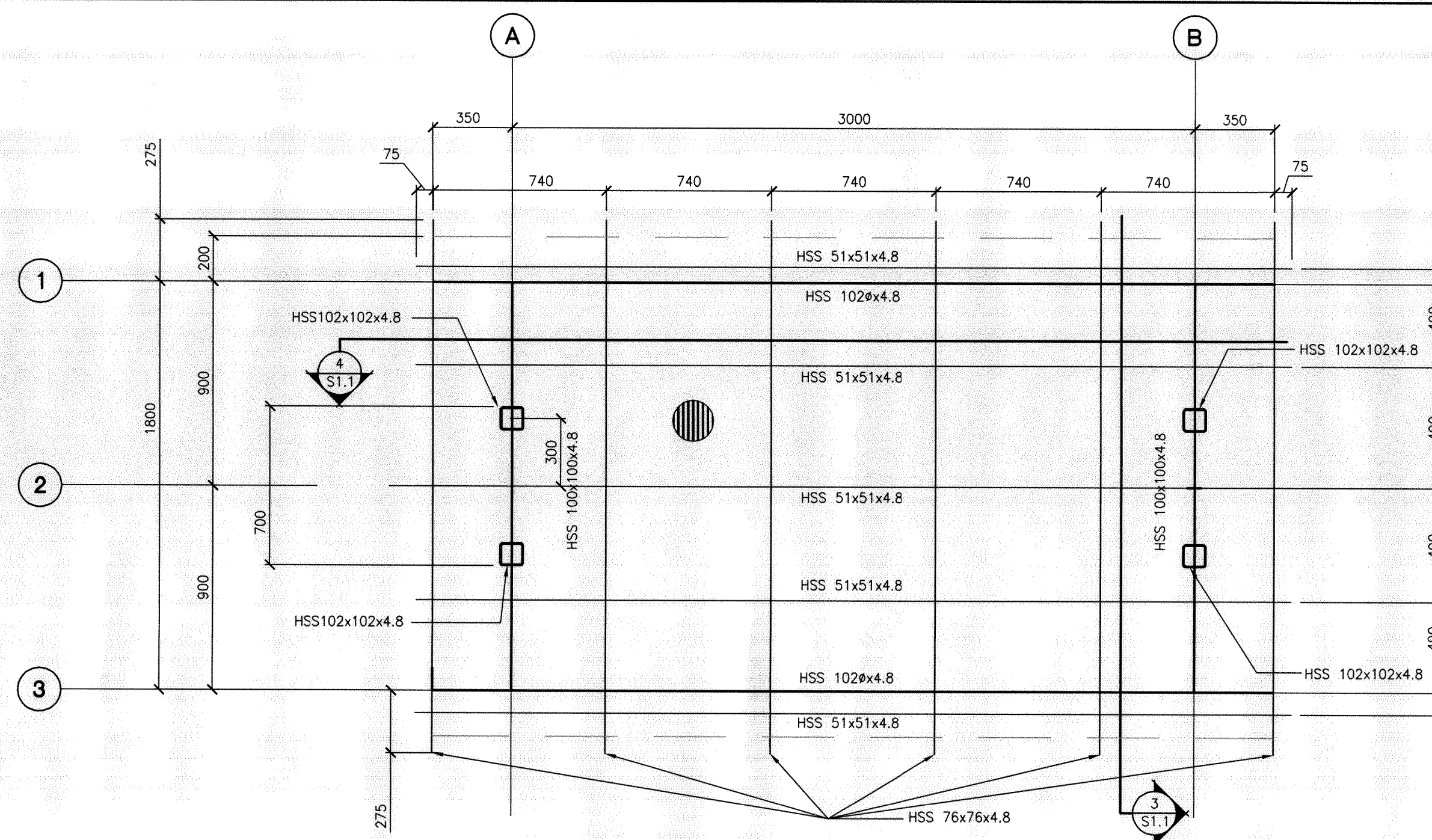
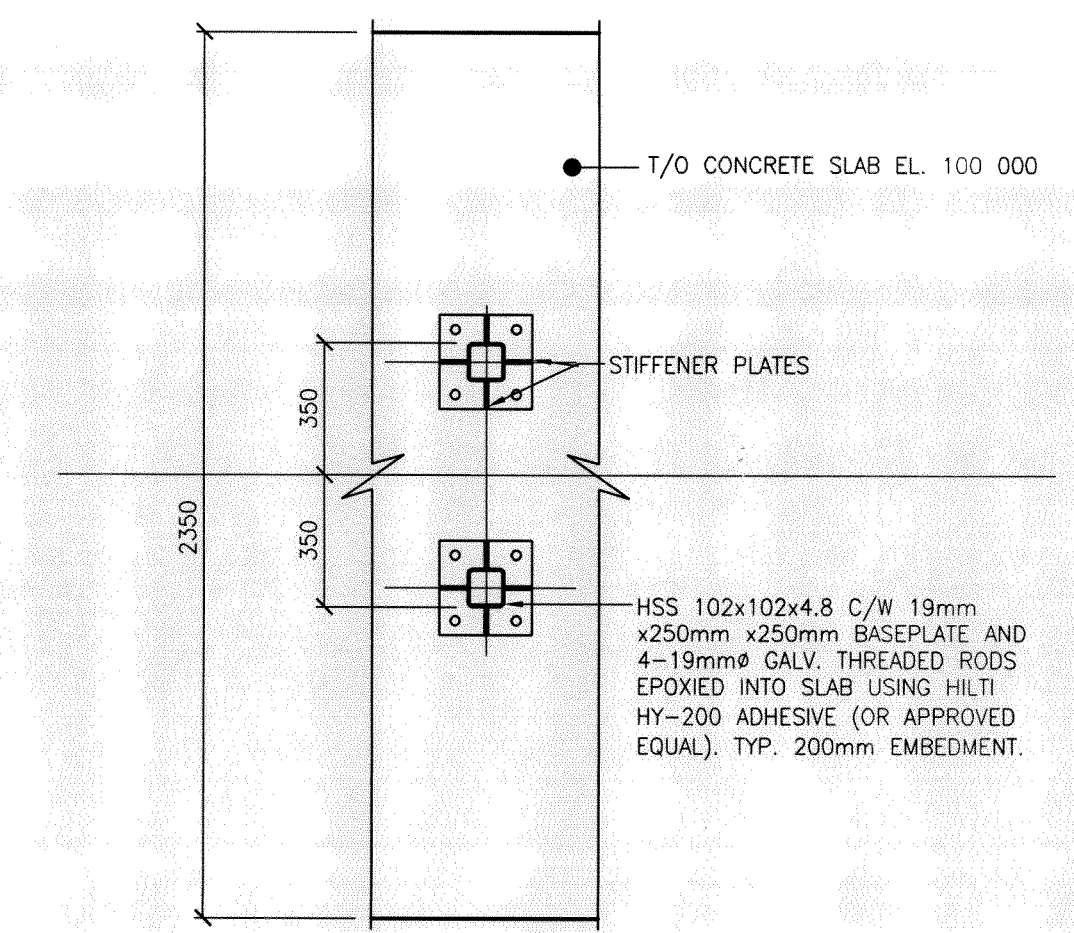


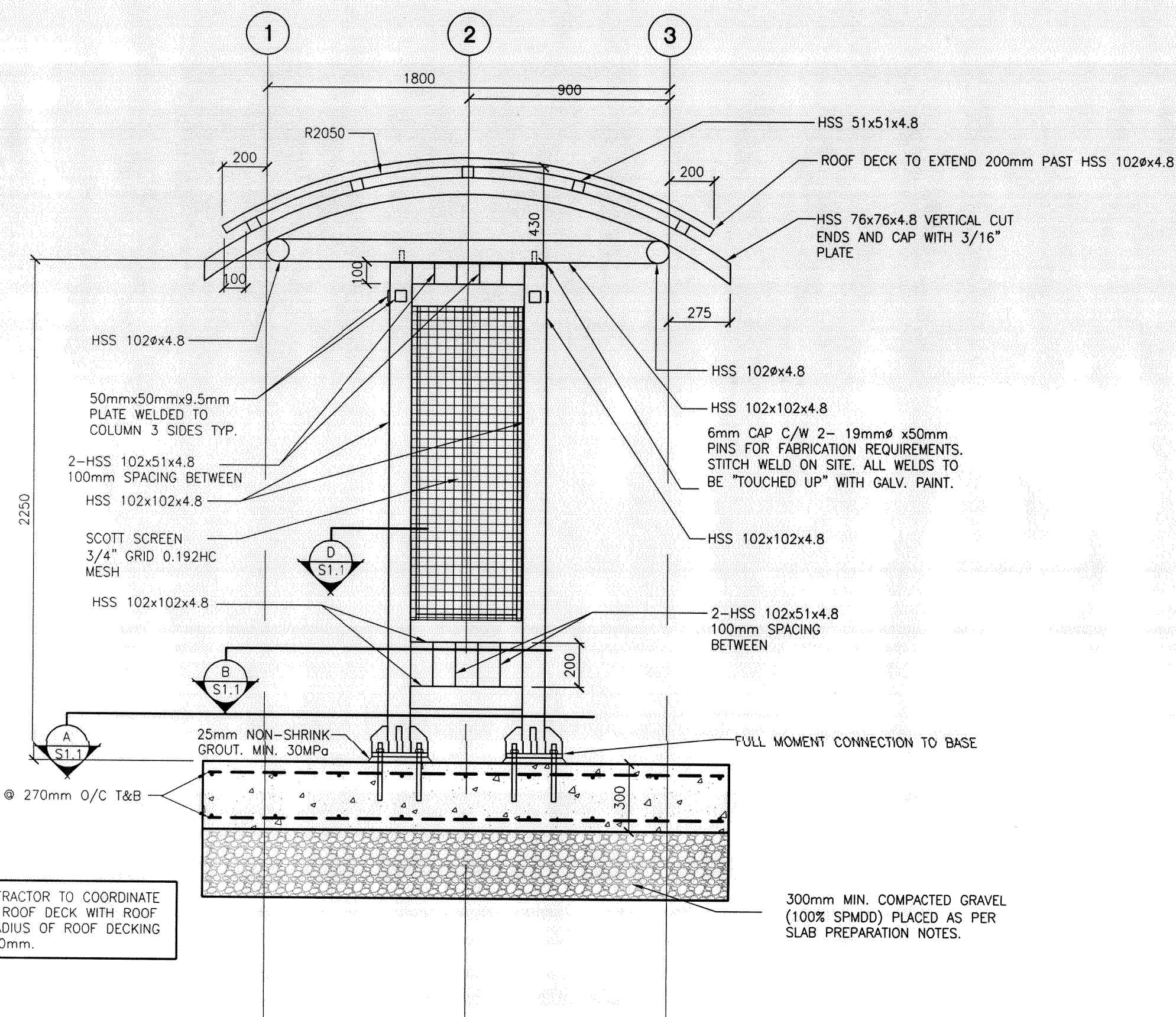
1 FOUNDATION/BASE SLAB PLAN  
S1.1 SCALE: 1/20



2 FRAMING PLAN  
S1.1 SCALE: 1/20



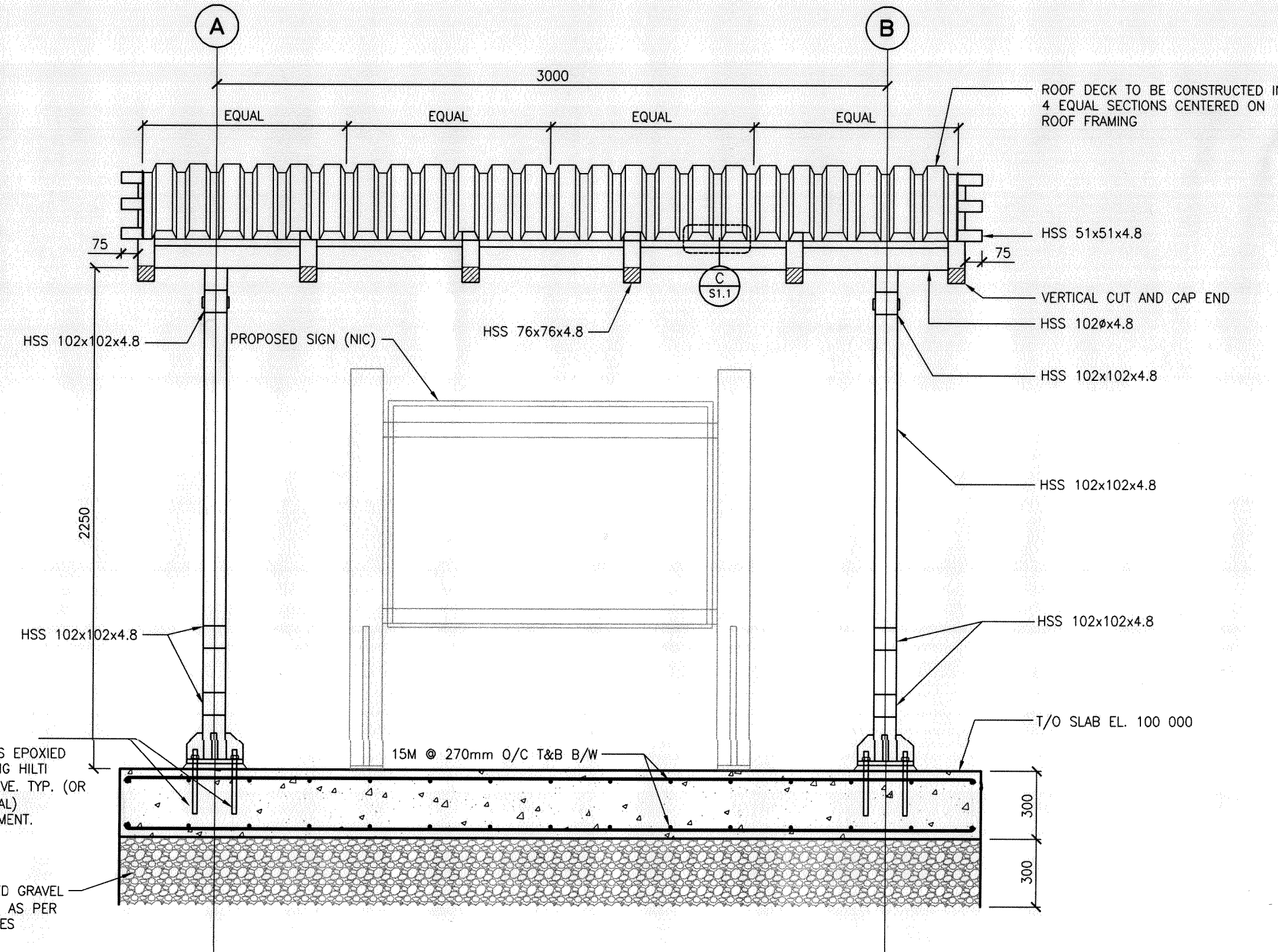
A DETAIL  
S1.1 SCALE: 1/20



3 SECTION  
S1.1 SCALE: 1/20

NOTE: CONTRACTOR TO COORDINATE RADIUS OF ROOF DECK WITH ROOF FRAME. RADIUS OF ROOF DECKING TO BE 2050mm.

300mm MIN. COMPACTED GRAVEL (100% SPMD), PLACED AS PER SLAB PREPARATION NOTES.



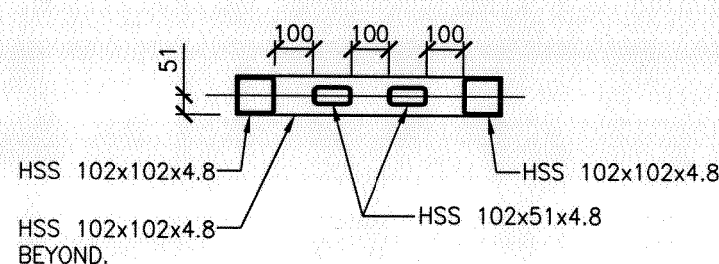
4 SECTION  
S1.1 SCALE: 1/20

19mm GALV. THREADED RODS EPOXIED INTO SLAB USING HILTI HY-200 ADHESIVE. TYP. (OR APPROVED EQUAL). 200mm EMBEDMENT.

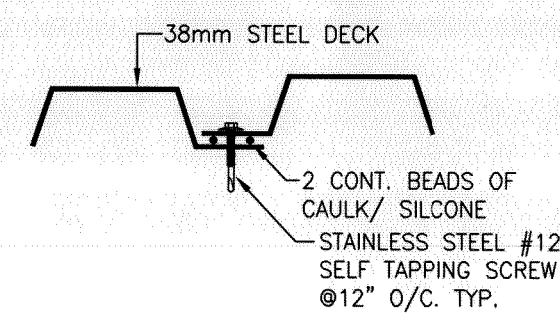
300mm MIN. COMPACTED GRAVEL (100% SPMD), PLACED AS PER SLAB PREPARATION NOTES.

WEST CC 725 38mm x 0.76mm (22 Ga.) GALVALUME PLUS COATED BOTH SIDES (OR APPROVED EQUAL)  
-STEEL DECK TO BE FASTENED AT 12" O/C ALONG ALL STRUCTURAL STEEL MEMBERS, AND ALONG OVERLAPPING JOINTS WITH STAINLESS STEEL NUMBER 12 SELF TAPPING SCREWS COMPLETE WITH RUBBER WASHERS.  
-ADD SILICONE TO ALL DECK JOINTS SEE DETAIL C/S1.1

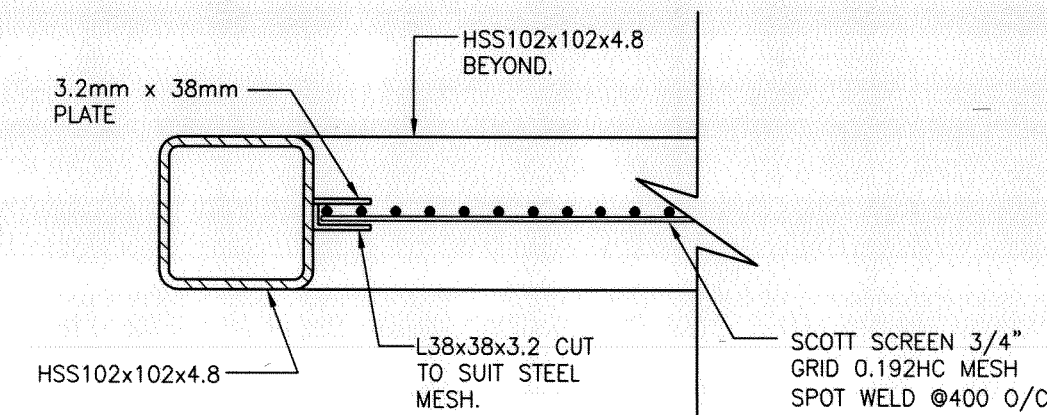
STRUCTURAL STEEL FINISH NOTE:  
-ALL STRUCTURAL STEEL TO BE HOT DIPPED GALVANIZED  
-TOUCH UP EDGES OF SITE TRIMMED STEEL DECK/STEEL WITH COLD GALVANIZING COMPOUND (ZRC OR GALVACON)  
-ALL GALVANIZING VENT HOLES TO BE PLACED FACING DOWN AND WELDED CLOSED AND PAINTED  
-CAP ALL OPENINGS WITH 3/16" PLATE AND WELD CLOSED



B DETAIL  
S1.1 SCALE: 1/20



C DETAIL  
S1.1 SCALE: 1/5



NOTE: ANGLE ON OUTSIDE TO BE WELDED TO POSTS BEFORE MESH. ANGLE AND PLATE TO BE CONTINUOUSLY WELDED.

D DETAIL  
S1.1 SCALE: 1/5

|     |                         |          |    |
|-----|-------------------------|----------|----|
| NO. | ISSUED FOR CONSTRUCTION | 11/25/13 | MG |
|     | REVISIONS               | DATE     | BY |

CONSULTANT  
These design documents are prepared solely for the use by the party with whom the design professional has entered into a contract and there are no representations of any kind made by the design professional to any party with whom the design professional has not entered into a contract. Any use of the drawing, disk or electronic data without the expressed written permission of Tower Engineering Group is strictly prohibited. The contractor is responsible to verify all dimensions with conditions on the site and report discrepancies to Tower Engineering for adjustment. All prints to be returned.

TOWER PROJECT NO.: 131370  
**TOWER ENGINEERING GROUP**  
 UNIT 1 - 1140 WAVERLEY ST. WINNIPEG, MB R3T 0P4  
 TEL: (204) 925-1150 FAX: (204) 925-1155  
 EMAIL: towereng@towereng.ca WEB: www.towereng.ca  
 • WINNIPEG • CALGARY • CAMBRIDGE

SEAL  
  
 SEAL

PROJECT  
**TRAILHEAD SHELTER  
 WINNIPEG, MB**

DRAWING  
**FOUNDATION PLAN, FRAMING PLAN,  
 SECTIONS AND DETAILS**

|              |            |             |             |
|--------------|------------|-------------|-------------|
| DESIGNED:    | MG         | DRAWING NO. | <b>S1.1</b> |
| DRAWN:       | MG         | REVISION    |             |
| CHECKED:     | GS         |             |             |
| SCALE:       | AS NOTED   |             |             |
| DATE:        | 11/25/2013 |             |             |
| PROJECT NO.: | 131370     |             |             |

**APEGN**  
 Certificate of Authorization  
 Tower Engineering Group  
 No. 4156 Expiry: April 30, 2014