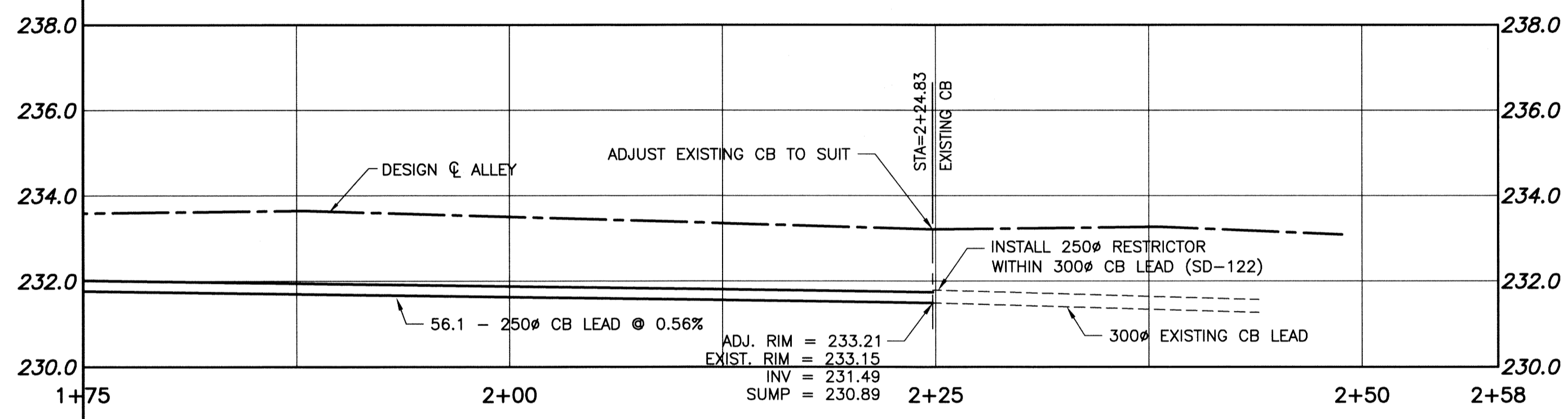
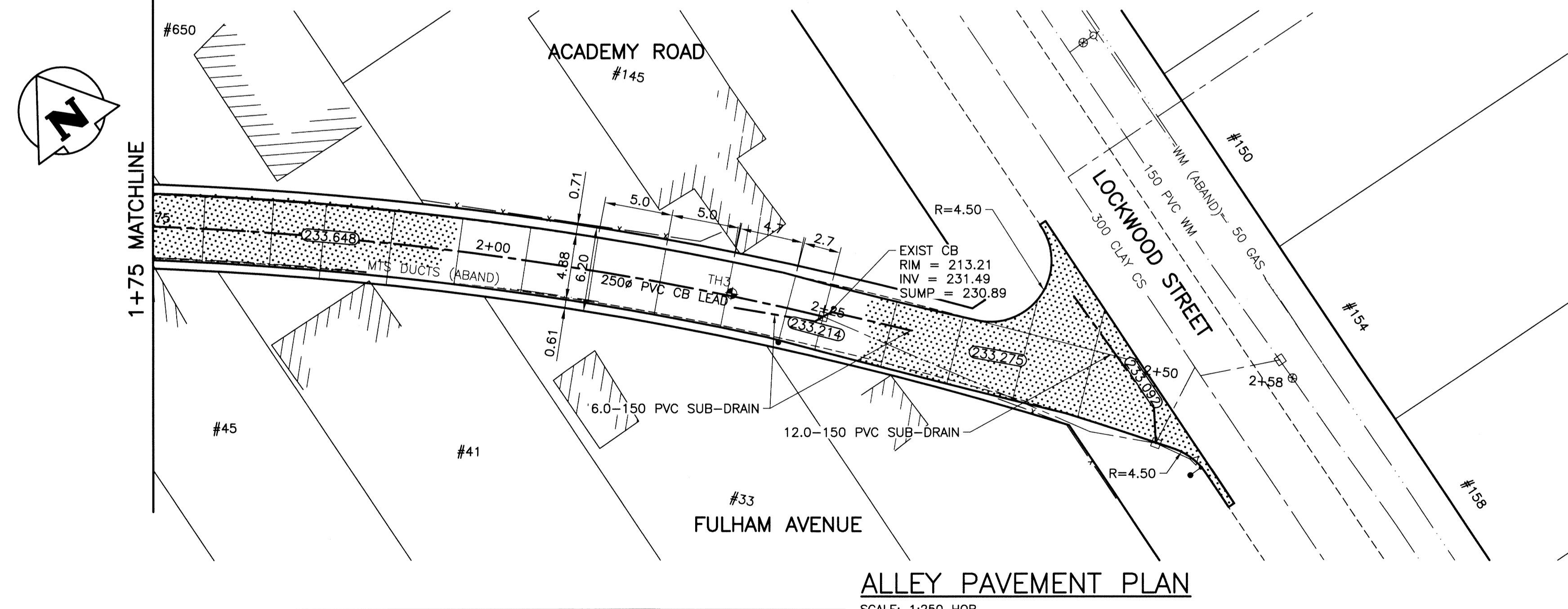


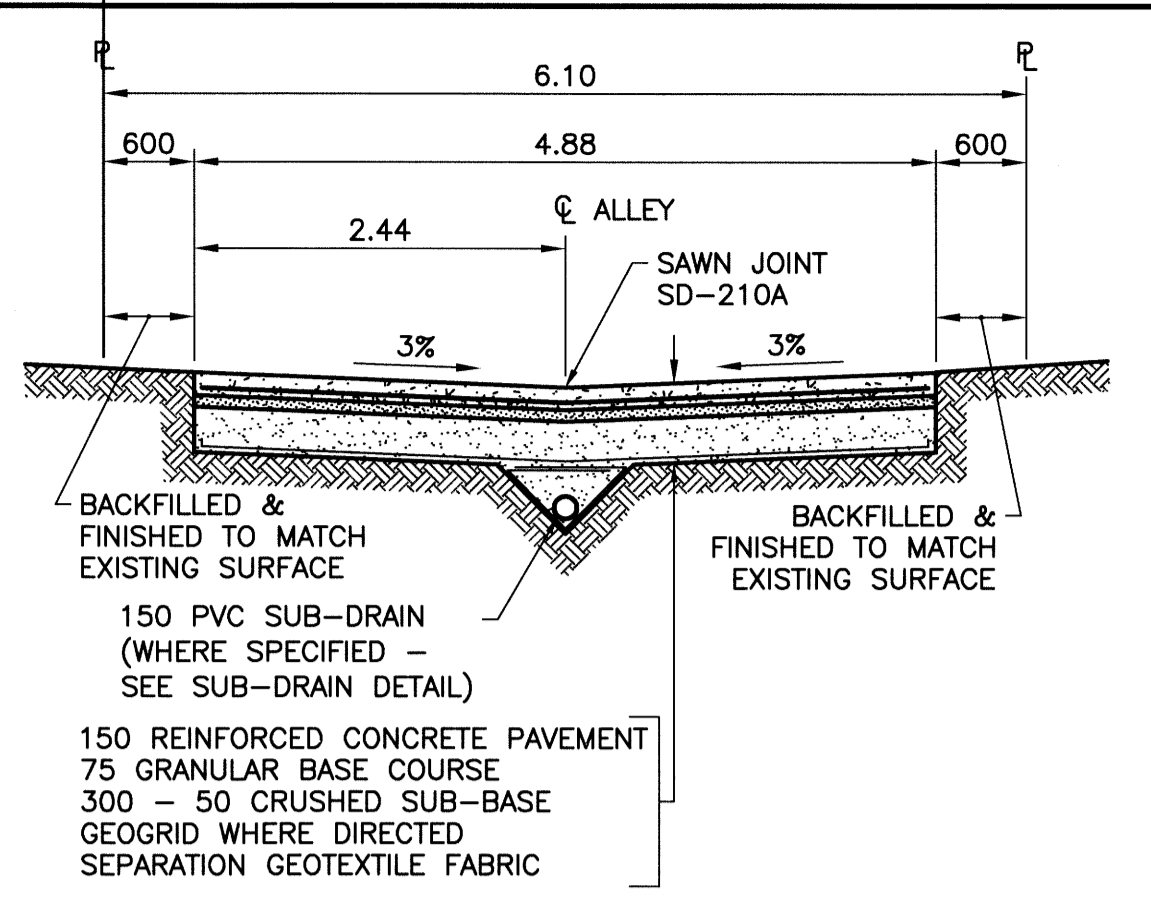
ALLEY PAVEMENT PROFILE
SCALE: 1:250 HOR
1:10 VER



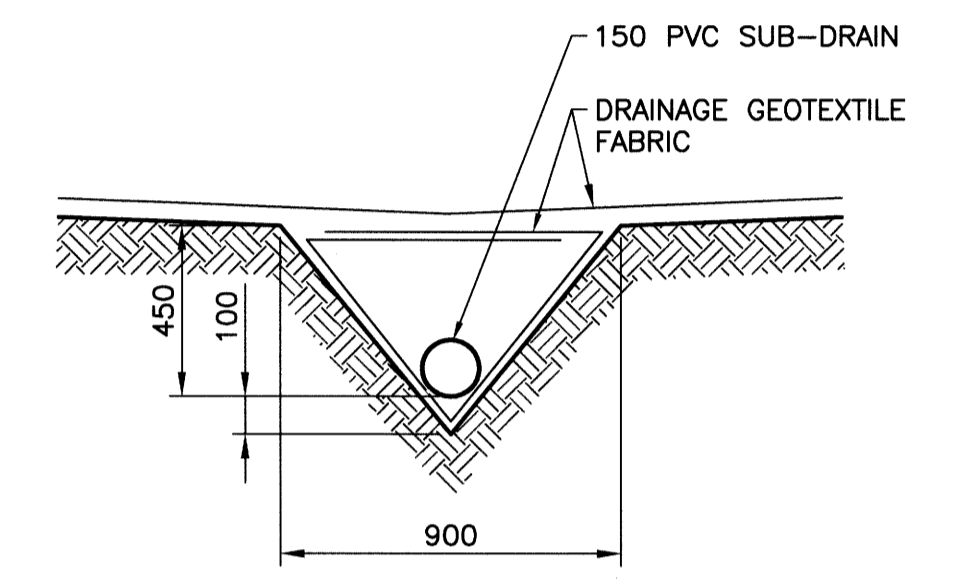
ALLEY SEWER PROFILE
SCALE: 1:250 HOR
1:100 VER



ALLEY PAVEMENT PLAN
SCALE: 1:250 HOR



TYPICAL CROSS SECTION
SCALE: 1:50

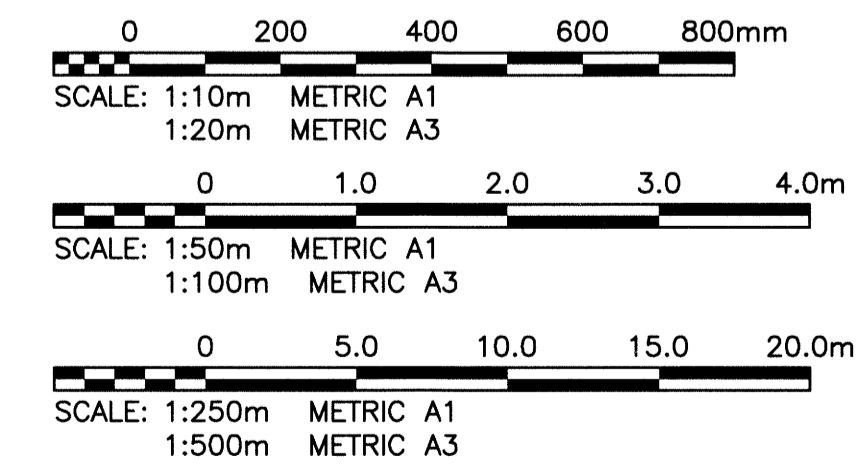


SUB-DRAIN DETAIL
SCALE: 1:20

- NOTES:**
1. STATION CHAINAGE IS BASED ON CENTERLINE OF ALLEY RIGHT OF WAY.
 2. ADJUST MH AND CB RIMS TO NEW GRADES.
 3. PLUG SUB-DRAINS AT TERMINAL ENDS.
 4. REGRADE EXISTING PRIVATE SIDEWALKS AS REQUIRED.
 5. INSTALLATION OF LIP CURBS AND THEIR EXTENTS TO BE DETERMINED BY THE CONTRACT ADMINISTRATOR.
 6. LIGHT STANDARDS, HYDRO POLES AND ANCHORS MAY REQUIRE TEMPORARY SUPPORT/REMOVAL OR REPLACEMENT AT THE CONTRACTOR'S EXPENSE.
 7. ISOLATE ALL POLES, BASES AND PILES WITHIN ALLEY RIGHT OF WAY (SD-228C)
 8. AVOID DAMAGE TO EXISTING TREES WITHIN THE LIMITS OF CONSTRUCTION.

WARNING
NOTIFY THE GAS COMPANY OF THE PROPOSED LOCATION OF EXCAVATION. TAKE PRECAUTION TO AVOID DAMAGE TO GAS COMPANY INSTALLATIONS. SEE PROVINCIAL REGULATION 210/72 FOR DETAILS.

METRIC
WHOLE NUMBERS INDICATE MILLIMETRES
DECIMALIZED NUMBERS INDICATE METRES



PROPERTY LIMITS DELINEATION
DELINEATION OF PROPERTY LIMITS AS SHOWN ON THIS DWG DOES NOT REPRESENT A 'LEGAL SURVEY'. KGS GROUP MAKES NO REPRESENTATION OR WARRANTY AS TO THE ACCURACY OF PROPERTY LIMITS DELINEATED ON THIS DWG, NOR ON THE DIMENSIONAL ACCURACY OF DWG FEATURES RELATIVE TO THOSE PROPERTY LIMITS.

APEGM
Certificate of Authorization
KGS Group
No. 245

300 L.D.S.	LAND DRAINAGE SEWER	300 L.D.S.	+	TEST HOLE	
250 W.W.S.	WASTE WATER SEWER	250 W.W.S.	+	GUY WIRE	
	GAS		+	LIGHT STANDARD	
	HYDRO		+	BACK OF CURB	
	M.T.S.		+	CONCRETE	
150 W.M.	WATERMAIN	150 W.M.	+	ASPHALT	
+	HYDRANT	+	+	SIDEWALK	
+	VALVE	+	+	PROPERTY LINE	
○	MANHOLE	○	+	SURVEY BAR	
□	CATCH BASIN	□	+	GEODETIC BENCHMARK	
▽	CURB INLET	▽	+	ELEVATION	(32.231)
•	POLES	•	+	LEGEND-PLAN	PROPOSED
•	POLES	•	+	LEGEND-PROFILE	PROPOSED

LOCATION APPROVED UNDERGROUND STRUCTURES
SUPV. U/G STRUCTURES COMMITTEE DATE
NOTE: LOCATION OF UNDERGROUND STRUCTURES AS SHOWN ARE BASED ON THE BEST INFORMATION AVAILABLE BUT NO GUARANTEE IS GIVEN THAT ALL EXISTING UTILITIES ARE SHOWN OR THAT THE GIVEN LOCATIONS ARE EXACT. CONFIRMATION OF EXISTENCE AND EXACT LOCATION OF ALL SERVICES MUST BE OBTAINED FROM THE INDIVIDUAL UTILITIES BEFORE PROCEEDING WITH CONSTRUCTION.

B.M. KGS BASE ELEV.	DWG'S BASED ON C.S.R.S. NAD 83 SYSTEM, UTM GRID
0	ISSUED FOR TENDER 14/05/23
NO.	REVISIONS
	DATE BY
	DATE 14/03/14

DESIGNED BY	GES	CHECKED BY	CR
DRAWN BY	GEL	APPROVED BY	192
HOR. SCALE:	1:250	RELEASED FOR CONSTRUCTION:	
VERTICAL:	1:50	DATE	14/03/14

ENGINEER'S SEAL
M.C. ROWBOTHAM
Member 22679
PROFESSIONAL ENGINEER
MAY 23, 2014

THE CITY OF WINNIPEG
PUBLIC WORKS DEPARTMENT
TRANSPORTATION ENGINEERING DIVISION

PROJECT TITLE: **2013 ALLEY RENEWAL PROGRAM CONTRACT 1**
ACADEMY ROAD/FULHAM AVENUE
KENASTON BLVD TO LOCKWOOD ST
STA 1+75 TO LOCKWOOD ST

SHEET OF: **02** OF **14**
COMPUTER FILE NAME: **13-0107-031_CALL**
CITY DRAWING NUMBER: **0002**

CONSULTANT DRAWING NO.: **13-0107-007_C02**

P:\Projects\2013\13-0107-031\DocControl\ToBeIssued\DWG\13-0107-031_C02-Rev 0.dwg - Tab: C02 Plotted By: Gloewen 05/22/2014 [Thu 9:55am] PLOT 1:1 A-1