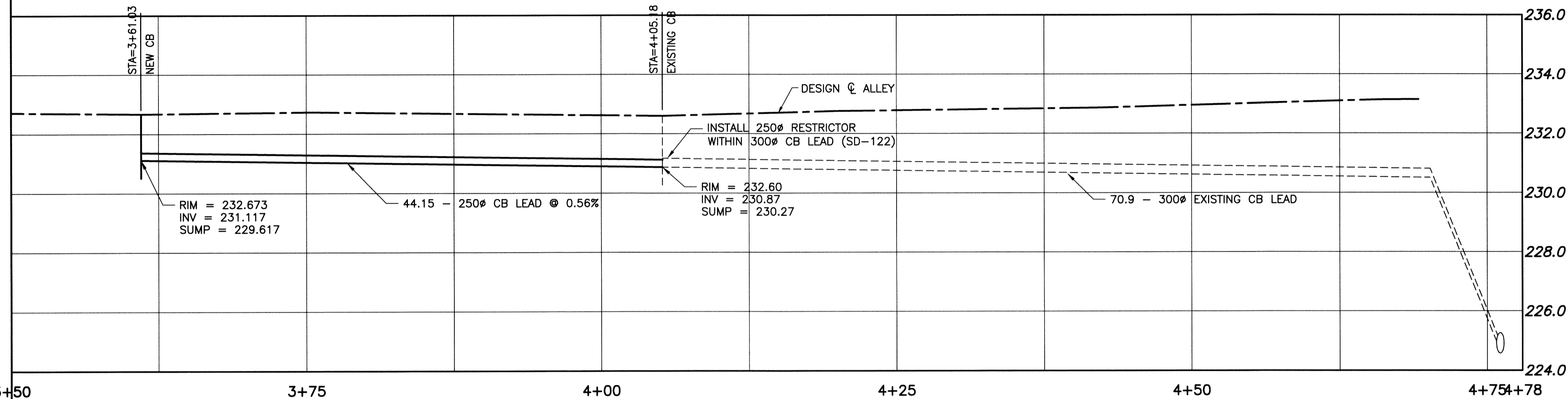
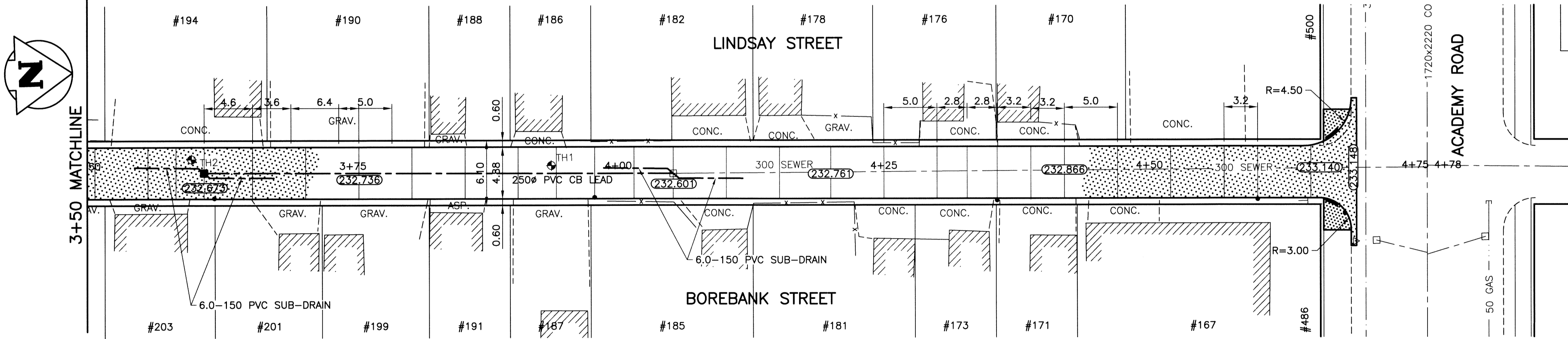


**ALLEY PAVEMENT PROFILE**

SCALE: 1:250 HOR  
1:10 VER

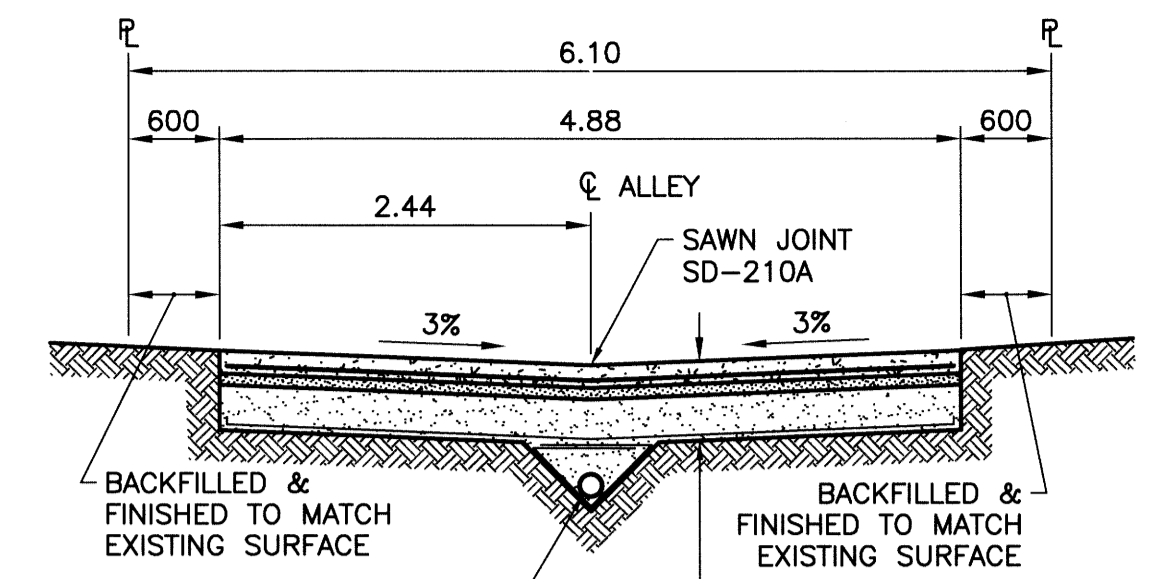


PHASE 2



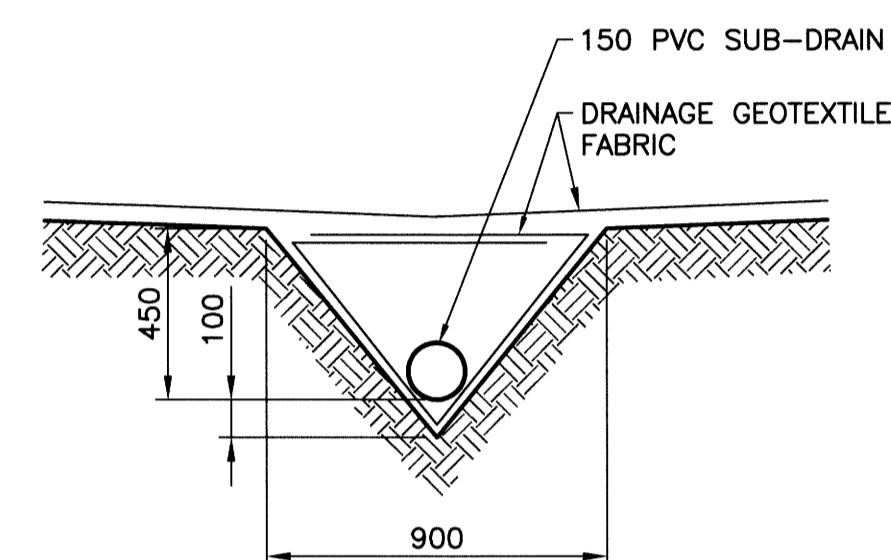
**ALLEY PAVEMENT PLAN**

SCALE: 1:250 HOR



**TYPICAL CROSS SECTION**

SCALE: 1:50



**SUB-DRAIN DETAIL**

SCALE: 1:20

**NOTES:**

1. STATION CHAINAGE IS BASED ON CENTERLINE OF ALLEY RIGHT OF WAY.
2. ADJUST MH AND CB RIMS TO NEW GRADES.
3. PLUG SUB-DRAINS AT TERMINAL ENDS.
4. REGRADE EXISTING PRIVATE SIDEWALKS AS REQUIRED.
5. INSTALLATION OF LIP CURBS AND THEIR EXTENTS TO BE DETERMINED BY THE CONTRACT ADMINISTRATOR.
6. LIGHT STANDARDS, HYDRO POLES AND ANCHORS MAY REQUIRE TEMPORARY SUPPORT/REMOVAL OR REPLACEMENT AT THE CONTRACTOR'S EXPENSE.
7. ISOLATE ALL POLES, BASES AND PILES WITHIN ALLEY RIGHT OF WAY (SD-228C)
8. AVOID DAMAGE TO EXISTING TREES WITHIN THE LIMITS OF CONSTRUCTION.

**WARNING**

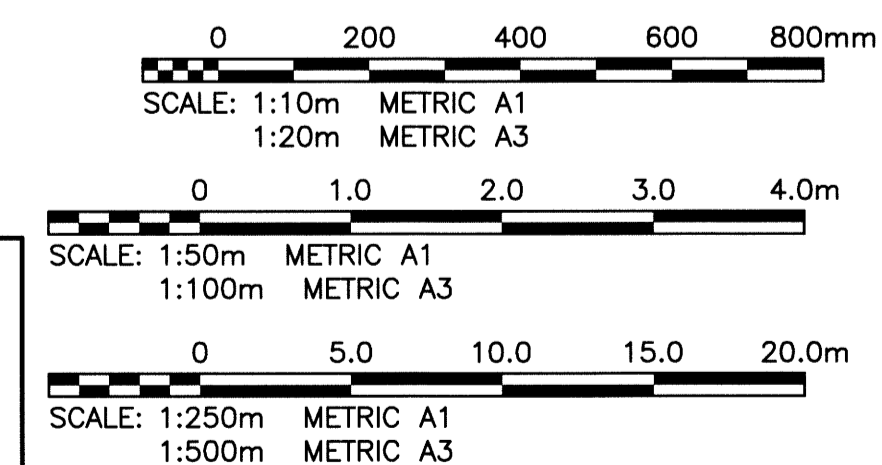
NOTIFY THE GAS COMPANY OF THE PROPOSED LOCATION OF EXCAVATION. TAKE PRECAUTION TO AVOID DAMAGE TO GAS COMPANY INSTALLATIONS. SEE PROVINCIAL REGULATION 210/72 FOR DETAILS.

**METRIC**

WHOLE NUMBERS INDICATE MILLIMETRES  
DECIMALIZED NUMBERS INDICATE METRES

**PROPERTY LIMITS DELINEATION**

DELINEATION OF PROPERTY LIMITS AS SHOWN ON THIS DWG DOES NOT REPRESENT A 'LEGAL SURVEY'. KGS GROUP MAKES NO REPRESENTATION OR WARRANTY AS TO THE ACCURACY OF PROPERTY LIMITS DELINEATED ON THIS DWG, NOR ON THE DIMENSIONAL ACCURACY OF DWG FEATURES RELATIVE TO THOSE PROPERTY LIMITS.



**APEGM**  
Certificate of Authorization  
KGS Group  
No. 245

300 LDS	LAND DRAINAGE SEWER	300 LDS	TEST HOLE				
250 WWS	WASTE WATER SEWER	250 WWS	GUY WIRE				
	GAS		LIGHT STANDARD				
	HYDRO		BACK OF CURB				
	M.T.S.		CONCRETE				
150 WM	WATERMAIN	150 WM	ASPHALT				
	HYDRANT		SIDEWALK				
	VALVE		PROPERTY LINE				
	MANHOLE		SURVEY BAR				
	CATCH BASIN		GEODETIC BENCHMARK				
	CURB INLET		ELEVATION				
	POLES						
EXISTING	LEGEND-PLAN	PROPOSED	EXISTING	LEGEND-PLAN	PROPOSED	EXISTING	LEGEND-PROFILE

**LOCATION APPROVED UNDERGROUND STRUCTURES**

SUPV. U/G STRUCTURES COMMITTEE DATE

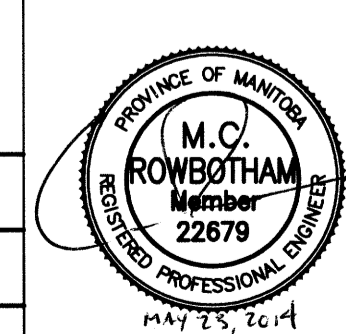
NOTE: LOCATION OF UNDERGROUND STRUCTURES AS SHOWN ARE BASED ON THE BEST INFORMATION AVAILABLE BUT NO GUARANTEE IS GIVEN THAT THE GIVEN LOCATIONS ARE EXACT. CONFIRMATION OF EXISTENCE AND EXACT LOCATION OF ALL SERVICES MUST BE OBTAINED FROM THE INDIVIDUAL UTILITIES BEFORE PROCEEDING WITH CONSTRUCTION.

B.M. 51-036 ELEV. 233.341	S.W. Cor. Kingsway & Borebank St., Tbt. in 4.6m Conc. pile, 2.5m E. of W.L. Borebank St. & 0.6m S. of S.L. Kingsway
ISSUED FOR TENDER	14/05/23
NO. REVISIONS	DATE BY

**KGS GROUP**  
CONSULTING ENGINEERS

DESIGNED BY	GES	CHECKED BY	CR
DRAWN BY	GEL	APPROVED BY	MH
HOR. SCALE:	1:250	RELEASED FOR CONSTRUCTION:	
VERTICAL:	1:50	DATE	14/03/14

ENGINEER'S SEAL



**THE CITY OF WINNIPEG**  
PUBLIC WORKS DEPARTMENT  
TRANSPORTATION ENGINEERING DIVISION

PROJECT TITLE  
**2013 ALLEY RENEWAL PROGRAM**  
CONTRACT 1  
LINDSAY STREET/BOREBANK STREET  
KINGSWAY TO ACADEMY ROAD  
STA 3+50 TO ACADEMY ROAD

SHEET OF  
**05** OF **14**

COMPUTER FILE NAME  
13-0107-031\_CALL

CITY DRAWING NUMBER  
**0005**

CONSULTANT DRAWING NO.  
13-0107-007\_C05